



HERTFORDSHIRE CRIMINAL JUSTICE BOARD

PERFORMANCE REPORT

October 2008

Prepared By:
Glen Price,
Performance Officer
Hertfordshire Criminal Justice Board

Circulation:- Board Members; Area Delivery Groups and Performance Advisor (OCJR).

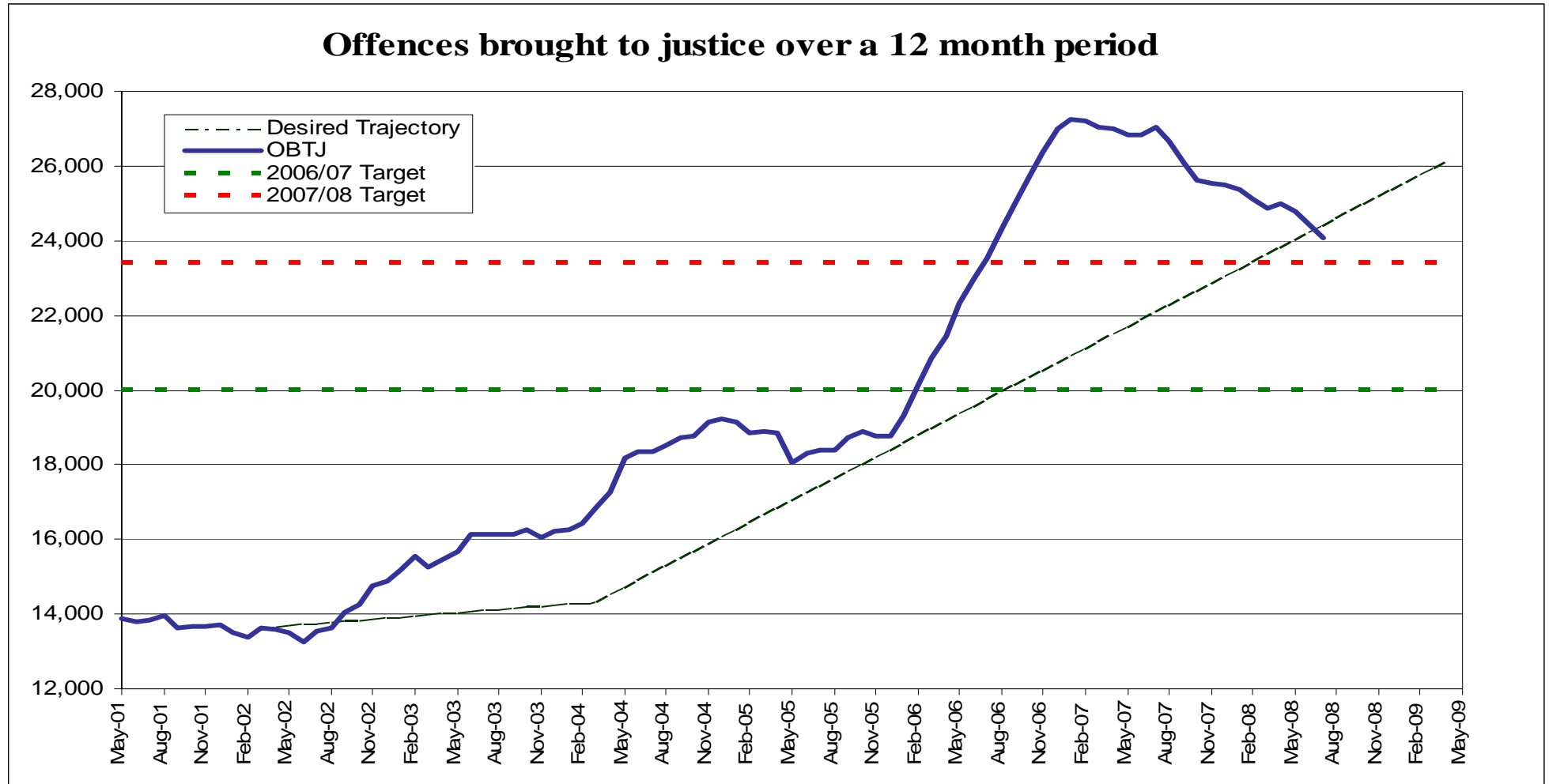
Report Key: **Red** - Significantly off target (5%>pts) **Amber** - Just off target (5% =<pts) **Green** - On or exceeding target

Index

Page No	Subject	Contents	Last Update
4	OBTJ	12 monthly Rolling	Jul '08
5		By Disposal Type (Numbers)	Sep '08
6		By Disposal Type (Percentages)	Aug '08
7		By Category	Sep '08
8		Summary of each Area's latest rolling annual data	Jun '08
9		Rolling Annual Rates by Seriousness – National	Jul '08
10		Rolling Annual Rates by Seriousness – MSF Area Summaries	Jul '08
11		Rates by Seriousness – Area Summary	Jul '08
11	Sanction Detection Rates	MSF Area Summaries	Sep '08
	Recorded Crime	Recorded Crime per 1000 (Population/Household) – Rolling 12 months	Sep '08
12	OBTJ	Rate by Seriousness – Area Detail	Jul '08
13	Seriousness	List of Offences by Seriousness	n/a
14	Statutory Charging	Total Arrests and Statutory Charge Referrals (Magistrates Courts)	Sep '08
15		Referrals by “Last Decision Made” (Magistrates Courts)	Sep '08
16		Outcomes for Defendants Subject to Pre-Charge Decisions (Magistrates Courts)	Sep '08
17	Convictions	Area figures from January 2007	Aug '08
18		Rates in Magistrates Courts from January 2007	Sep '08
19		Rates for Magistrates Courts – National for current month	Sep '08
20	Attrition Rates	Area figures from January 2007 - Magistrates Courts only	Sep '08
21		Rates for Magistrates Courts – National for current month	Sep '08
22	Guilty Pleas	Area figures from January 2007 - Magistrates Courts only	Sep '08
23		Rates for Magistrates Courts – National for current month	Sep '08
24	Discontinuances	Rates for Magistrates Courts from January 2007	Sep '08
25		Rates for Magistrates Courts – National for current month	Sep '08
26	PND's	Crime and Non-Crime (Charts and Figures) rolling 12 months	Aug '08
27	CJ-SSS	Area Summary Report	Sep '08
28		Central Herts Magistrates Courts – Detail	Sep '08
29		East Herts Magistrates Courts - Detail	Sep '08
30		North Herts Magistrates Courts – Detail	Sep '08
31		West Herts Magistrates Courts - Detail	Sep '08
32	Conditional Cautions	Number Administered – National for current month	Sep '08
33	PPO's	Arrests within Most Similar Forces – Year to Date	Sep '08
		Offences by BCU	Sep '08
34		Arrest to Completion Times	Sep '08
	PYO's	Arrest to Completion Times	Aug '08
35	FTA Warrants	Current Number Outstanding – Broken down to Exported and In-Force	Sep '08
36		Number Issued, Executed, Outstanding by In-Force, Imported and Exported	Sep '08
		Performance figures for the Execution of Category A, B, C warrants	Sep '08

Page No	Subject	Contents	Last Update
37		Time Taken for Magistrates Courts to Notify Police	Sep '08
38		Warrants by Police Area – Breach, FTA, PPO and PYO	Sep '08
	Alcohol Diversion Scheme	Rolling 12 month statistics	Sep '08
		PND's (Crime) – Reasons for Cancellations rolling 6 months	Aug '08
39	Licence Recall	Area performance data for rolling 6 months – Emergency Recalls	Jul '08
		Area performance data for rolling 6 months – Standard Recalls	Jul '08
40		National performance data for rolling 6 months – All Recalls	Jul '08
41		Unlawfully at Large	24 Oct '08
42	Trial Effectiveness	Ineffective Trials – All Courts	Sep '08
43		Cracked Trials (Positive and Negative Breakdown) – All Courts	Sep '08
44	POCA	Monthly Collections – Year to Date	Sep '08
45		Number of Asset restraint Orders – Year to Date	Sep '08
46		Number of Confiscation Orders – Year to Date	Sep '08
47		Value of Confiscation Orders – Year to Date	Sep '08
48		Number of Restraint Orders, Confiscations and Forfeitures	Sep '08
49		Value of Confiscation Orders and Forfeitures	Sep '08
50	Community Penalty Enforcements	Number Actioned within an Average of 35 days	Sep '08
51		60% Actioned within 25 Working Days	Sep '08
52	Public Confidence	British Crime Survey Quarterly Returns	Mar '08
53		PSA24 – Effective / Fairness baseline figures	Mar '08

NTJG - 12 Month Rolling OBTJ to July 2008

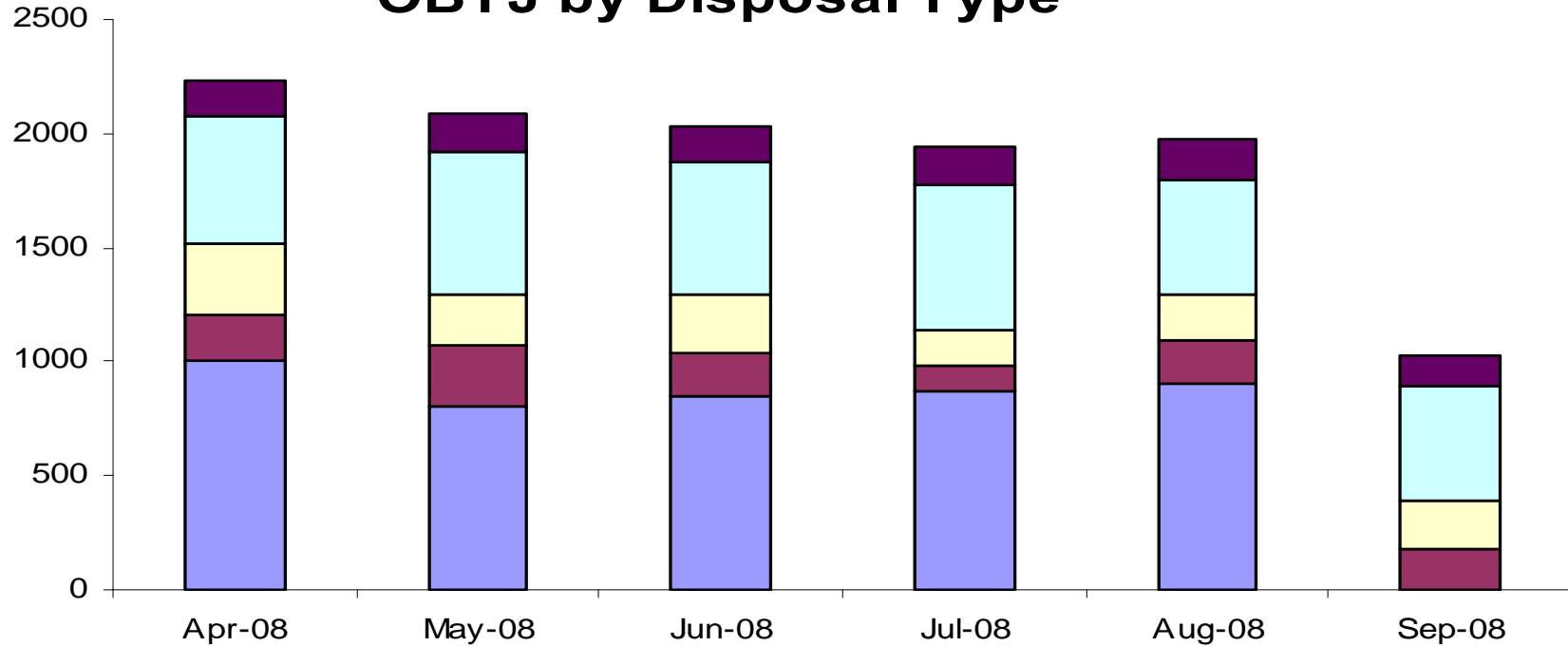


Hertfordshire Baseline (2001/02)	Target 2008/09	Actual to latest month	Performance vs. baseline	Performance vs. target
13,617	26,737	24,053 (July 2008)	+ 76.6 %	- 10.0%

Source: Justice Gap Action Team (JGAT - Home Office) Performance Report for September 2008

The provisional OBTJ figure for the month of August 2008 is 1,796. This indicates a decrease of 219 when compared to 2,015 for August 2007 and provides a predicted total for August 2008 of 23,834.

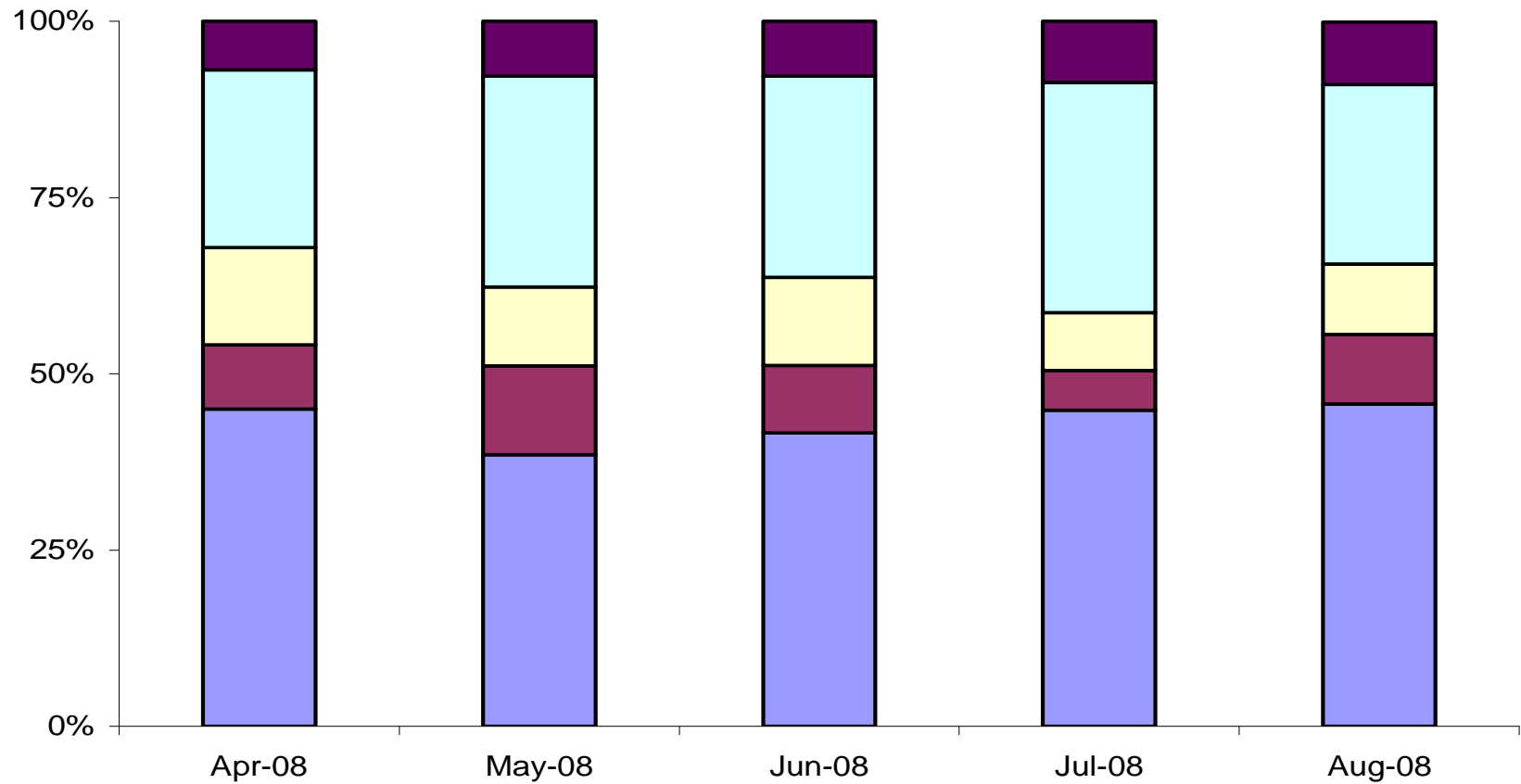
OBTJ by Disposal Type



	Apr-08	May-08	Jun-08	Jul-08	Aug-08	Sep-08
Total OBTJ	2229	2086	2031	1944	1972	1025
■ Formal Warnings	153	162	158	170	176	133
□ Cautions	561	624	579	633	500	499
■ TIC's	308	233	254	159	198	218
■ PNDs	203	263	195	111	196	175
■ Convictions	1004	804	845	871	902	

Source: MIS (BTJ Data – Sep)

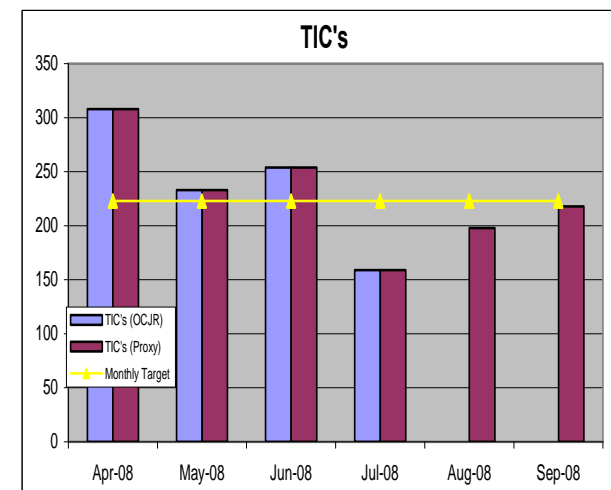
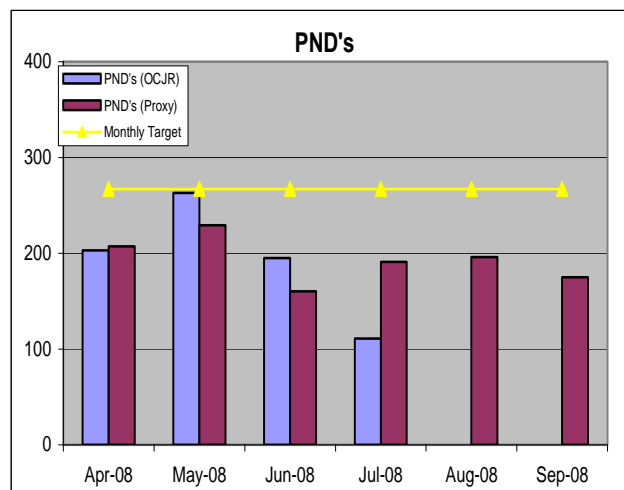
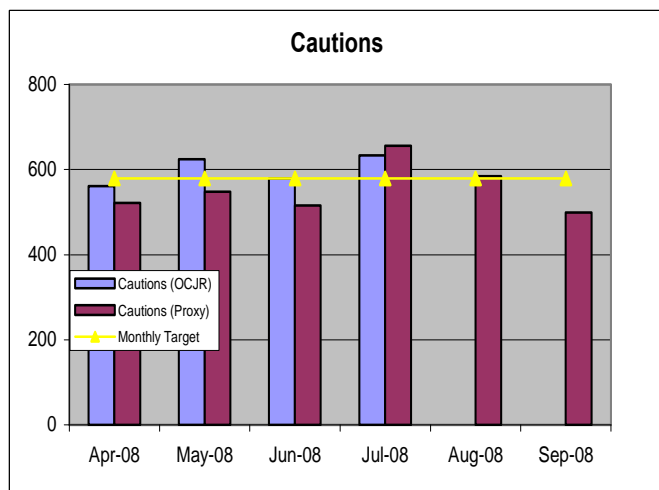
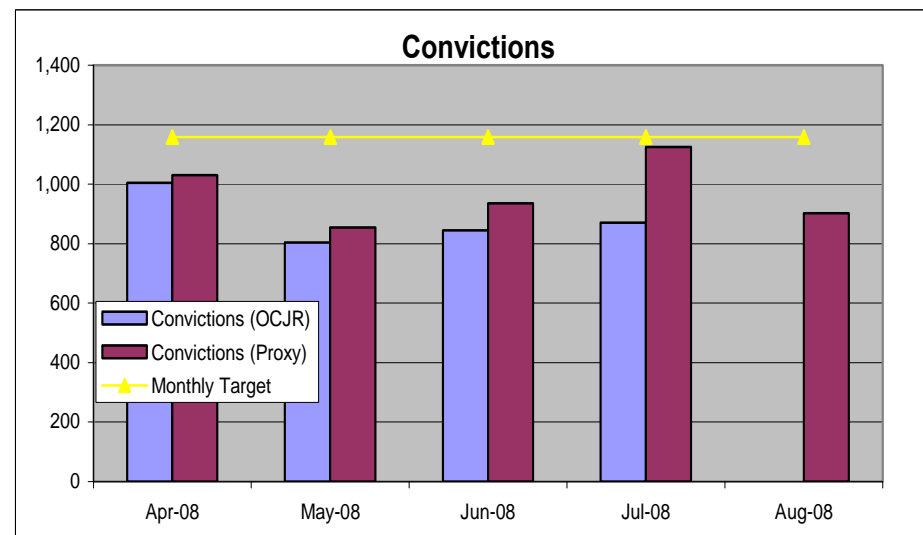
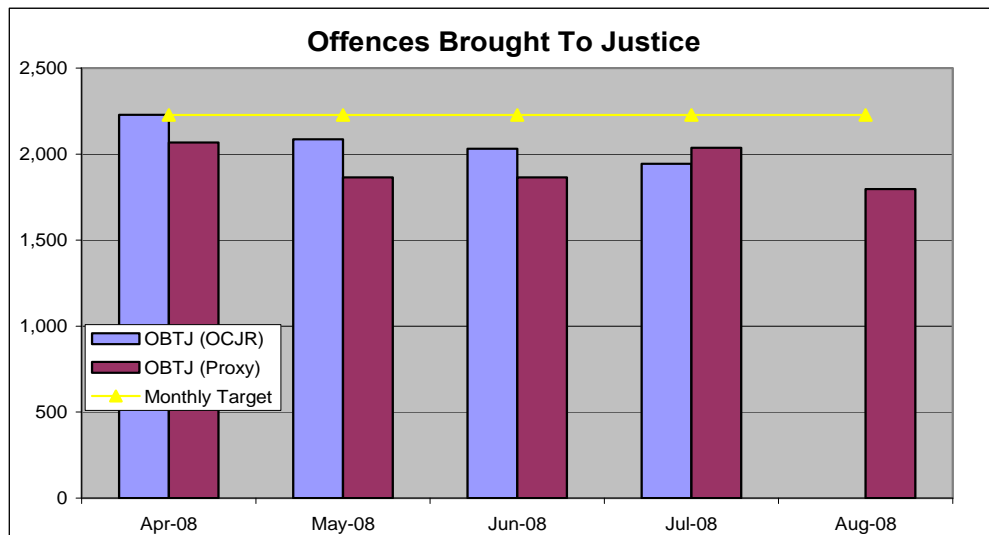
% of OBTJ by Disposal Type



	Apr-08	May-08	Jun-08	Jul-08	Aug-08
Formal Warnings	6.9%	7.8%	7.8%	8.7%	8.9%
Cautions	25.2%	29.9%	28.5%	32.6%	25.4%
TIC's	13.8%	11.2%	12.5%	8.2%	10.0%
PNDs	9.1%	12.6%	9.6%	5.7%	9.9%
Convictions	45.0%	38.5%	41.6%	44.8%	45.7%

Source: MIS (BTJ Data – Sep)

Offences Brought To Justice by Category



Source: MIS Data – OBTJ (Sep) and CJ-MIS (Sep)

Offences Brought to Justice - Rolling Annual OBTJ Rate July 2008	Tier 1 Crime	Tier 1 Serious Violent Offences	Tier 1 Serious Sexual Offences	Tier 2 Acquisitive Crime	Tier 3 Other Crime
Avon & Somerset	30.6%	41.2%	25.8%	12.7%	34%
Bedfordshire	35.2%	42.4%	29.5%	8.6%	33.5%
Cambridgeshire	28%	28.5%	27.8%	13.4%	34.2%
Cheshire	47.9%	57.1%	43%	14.6%	32.5%
Cleveland	50.2%	43.6%	54.7%	14%	38.2%
Cumbria	47%	56.8%	42.2%	19.3%	43.5%
Derbyshire	31.7%	30.1%	32.6%	16.7%	32.3%
Devon and Cornwall	39.4%	40.4%	39%	13.6%	32.4%
Dorset	39%	34.4%	40.5%	11.2%	31.8%
Durham	57.1%	64%	51.8%	12.1%	35.8%
Dyfed Powys	49%	41.6%	56.5%	21.4%	50.9%
Essex	32.6%	32.3%	32.7%	10.3%	37.5%
Gloucestershire	28.3%	36.4%	25.6%	20.2%	33.3%
Greater Manchester	35.6%	33.4%	37.5%	10.1%	31.2%
Gwent	27%	24.7%	29.1%	11.9%	40.9%
Hampshire & IOW	39.1%	62.4%	32.5%	10.2%	29%
Hertfordshire	35.6%	47.6%	29.8%	10.8%	35.8%
Humberside	38.8%	57.5%	28.4%	12.5%	34.4%
Kent	34.6%	32.1%	36.2%	14.3%	32.5%
Lancashire	46.2%	32.6%	62.8%	23.2%	39.6%
Leicestershire	22.7%	29.7%	19.5%	14.3%	32.8%
Lincolnshire	45.3%	48.6%	43.8%	11%	33.3%
London	26.2%	33.3%	22.2%	10.2%	32.4%
Merseyside	25.7%	25%	26.8%	15.5%	43.9%
Norfolk	33.3%	35.5%	32.1%	24.7%	39.2%
Northamptonshire	32.7%	35.6%	30.6%	14%	26%
Northumbria	47.1%	66.5%	35.5%	18.8%	45.5%
North Wales	44.9%	47.9%	43.1%	20%	42.2%
North Yorkshire	58.5%	60.2%	57.6%	8.8%	37.6%
Nottinghamshire	40.6%	45.7%	37.7%	9.1%	26.8%
South Wales	34.4%	35.8%	32.7%	11.2%	31.1%
South Yorkshire	46.1%	49.7%	43.1%	22.1%	33%
Staffordshire	49.9%	114.4%	30.1%	12.6%	30.4%
Suffolk	39.7%	61.5%	32.4%	14.4%	40.1%
Surrey	36.9%	56.2%	31.5%	8.9%	30%
Sussex	44.7%	70%	38.1%	9.8%	35.1%
Thames Valley	34.9%	54.5%	27.9%	10.3%	28.9%
Warwickshire	28.9%	31.1%	27.6%	13.9%	32.1%
West Mercia	34.7%	53.2%	27.9%	13%	36.4%
West Midlands	26.9%	23.7%	30%	9.2%	36%
West Yorkshire	36.8%	39%	35.3%	18%	28.5%
Wiltshire	34.2%	64.2%	24.5%	16.3%	32.4%

Source: CJ-MIS National Figures – July 2008

**Offences Brought to Justice - Rolling Annual OBTJ Rate
July 2008**

	Tier 1 Crime	Tier 1 Serious Violent Offences	Tier 1 Serious Sexual Offences	Tier 2 Acquisitive Crime	Tier 3 Other Crime
Avon & Somerset	30.6%	41.2%	25.8%	12.7%	34%
Bedfordshire	35.2%	42.4%	29.5%	8.6%	33.5%
Essex	32.6%	32.3%	32.7%	10.3%	37.5%
Hampshire & IOW	39.1%	62.4%	32.5%	10.2%	29%
Hertfordshire	35.6%	47.6%	29.8%	10.8%	35.8%
Kent	34.6%	32.1%	36.2%	14.3%	32.5%
Sussex	44.7%	70%	38.1%	9.8%	35.1%
Thames Valley	34.9%	54.5%	27.9%	10.3%	28.9%

Source: CJ-MIS National Figures – July 2008

Hertfordshire OBTJ Rate by Seriousness – Summary

[Jul 08 - Hertfordshire](#)

Tier		Recorded Crime		Convictions		Cautions		TICs		Cannabis Warnings		PNDs		Total OBTJs		Rate		MSG Average	
		Month	RA	Month	RA	Month	RA	Month	RA	Month	RA	Month	RA	Month	RA	Month	RA	Month	RA
Tier 1	Serious Sexual Offences	58	570	21	144	5	23	0	3			0	0	26	170	44.8	29.8	28.9	31.6
Tier 1	Serious Violent Offences	28	271	5	94	1	35	0	0			0	0	6	129	21.4	47.6	25.5	47.8
Tier 1		86	841	26	238	6	58	0	3			0	0	32	299	37.2	35.6	27.8	35.9
Tier 2	Serious Acquisitive Crime	1169	15749	71	756	13	185	52	757			0	0	136	1698	11.6	10.8	10.9	10.9
Tier 3	Other Offences	5221	61713	774	9596	614	6690	107	1632	170	1575	111	2607	1776	22100	34.0	35.8	31.6	33.3

Sanction Detection Rate Most Similar Area Comparison

Latest Detected Crimes Data	Sep - 2008
Latest Recorded Crimes Data	Sep - 2008
Most Similar Areas	Rolling Annual Sanction Detection Rate
Avon & Somerset	26.73%
Bedfordshire	27.21%
Essex	35.64%
Hampshire & IOW	27.89%
Hertfordshire	32.64%
Kent	30.26%
Sussex	31.16%
Thames Valley	26.92%
Most Similar Area Average	29.81%

Recorded Crime per 1000 (Population / Household) - Rolling Annual

Latest Recorded Crimes Data	Sep-08
Most Similar Areas	All Crime Types (Population)
Hertfordshire	73.90
Avon & Somerset	90.71
Bedfordshire	81.78
Essex	69.40
Hampshire & IOW	88.15
Kent	77.06
Sussex	73.40
Thames Valley	91.30
Most Similar Area Average	81.50

Source: CJ-MIS October 2008

Hertfordshire OBTJ Rate by Seriousness - Detail

Jul 08 - Hertfordshire

Tier	Seriousness Offence Group	Recorded Crime		Convictions		Cautions		TICs		Cannabis Warning		PNDs		Total OBTJs		Rate		MSG Average		National Rate			
		Month	RA	Month	RA	Month	RA	Month	RA	Month	RA	Month	RA	Month	RA	Month	RA	Month	RA	Month	RA		
Tier 1	Serious Sexual Offences	Abuse of children through prostitution and pornography.		4													0.00	0.00	100.00	27.08	155.56	99.07	
		Causing sexual activity without consent.	1	5															40.00	65.33	87.50	39.13	
		Rape.	16	177	7	32									7	32	43.75	18.08	25.79	19.73	18.56	18.14	
		Sexual activity etc. with a person with a mental disorder.		1																68.96	25.00	63.11	
		Sexual Activity involving a Child under 13.	2	4		4	1	1							1	5	50.00	125.00	96.68	66.83	73.79	49.33	
		Sexual Assault on a Female.	36	336	14	74	4	21		3					18	98	50.00	29.17	28.71	32.30	35.32	37.10	
		Sexual Assault on a Male.	3	42		34		1								35		83.33	36.92	69.64	52.66	52.64	
		Trafficking for sexual exploitation.		1																		20.00	54.55
Tier 1	Serious Violent Offences	Attempted Murder.	4	13															16.67	28.79	22.58	18.45	
		Causing Death by Aggravated Vehicle Taking.																		100.00		140.00	
		Causing Death by Dangerous Driving, Causing death by Careless Driving when under the influence of drink or drugs, and	1	10	1	8									1	8	100.00	80.00	120.00	135.83	51.28	81.87	
		Homicide and Child Destruction.	1	10		8										8		80.00	76.67	125.42	82.19	94.66	
		Wounding or other act endangering life, and Grievous Bodily Harm without intent.	22	238	4	78	1	35							5	113	22.73	47.48	21.74	44.16	20.31	36.58	
Tier 2	Serious Acquisitive Crime	Aggravated burglary in a dwelling	7	44		14													31.82	32.64	29.52	28.36	21.59
		Aggravated Vehicle Taking	6	114	6	82		13						6	95	100.00	83.33	88.71	82.64	68.32	72.75		
		Burglary in a dwelling	387	4,862	28	240	4	33	44	369					76	642	19.64	13.20	14.70	13.89	16.19	15.08	
		Robbery of Business Property & Robbery of Personal Property	59	696	23	178		6		8					23	192	38.98	27.59	22.41	19.75	20.65	18.51	
		Theft from a Vehicle	510	7,464	1	98	2	47	3	267					6	412	1.18	5.52	5.76	6.03	8.93	8.26	
		Theft or Unauthorised Taking of a Motor Vehicle	200	2,569	13	144	7	86	5	113					25	343	12.50	13.35	10.93	13.14	12.09	12.33	
Tier 3	Other Offences	Other Offences	5,221	61,713	774	9,596	614	6,690	107	1,632	170	1,575	111	2,607	1,776	22,100	34.02	35.81	31.58	33.30	32.70	33.73	

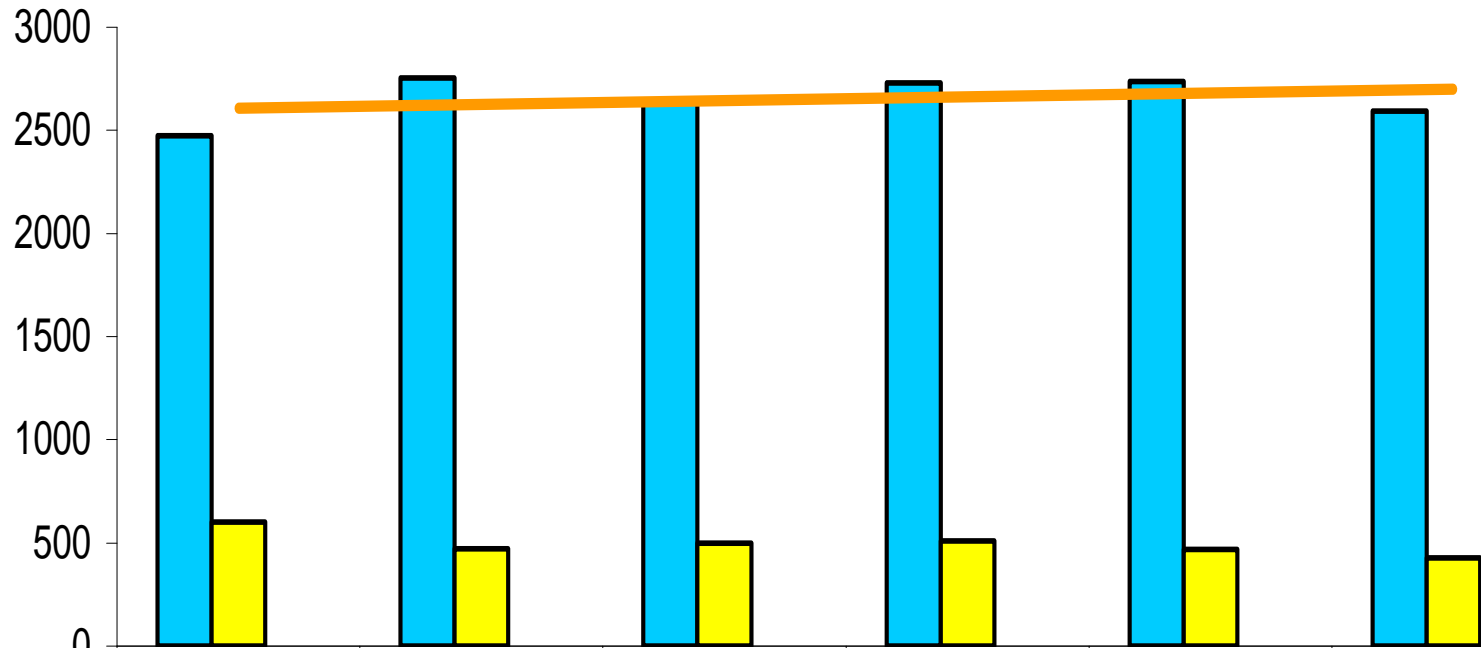
Sou

Source: CJ-MIS July 2008

List of Offences by Seriousness

Serious Sexual Offences (Tier1)	Serious Violent Offences (Tier1)
Abuse Of Children Through Prostitution & Pornography	Attempted Murder
Causing Sexual Activity Without Consent	Causing Death By Aggravated Vehicle Taking
Indecent Assault On A Female	Causing death by dangerous or careless driving (inc under influence)
Indecent Assault On A Male	Causing death by dangerous or careless driving (inc. under influence of drink/drugs)
Rape of a Female	Causing death by driving: unlicensed drivers etc.
Rape Of A Female Aged 16 And Over	Child Destruction
Rape Of A Female Child Under 13	Infanticide
Rape Of A Female Child Under 16	Manslaughter
Rape of a Male	Murder
Rape Of A Male Aged 16 And Over	Wounding Or Other Act Endangering Life
Rape Of A Male Child Under 13	
Rape Of A Male Child Under 16	
	Serious Acquisitive Offences (Tier2)
Sexual Activity etc With A Person With A Mental Disorder	Aggravated Burglary In A Dwelling
Sexual Activity Involving A Child Under 13	Aggravated Vehicle Taking
Sexual Assault On A Female Aged 13 And Over	Burglary In A Dwelling
Sexual Assault On A Female Child Under 13	Robbery Of Business Property
Sexual Assault On A Male Aged 13 And Over	Robbery Of Personal Property
Sexual Assault On A Male Child Under 13	Theft From A Vehicle
Trafficking For Sexual Exploitation	Theft Or Unauthorised Taking Of A Motor Vehicle

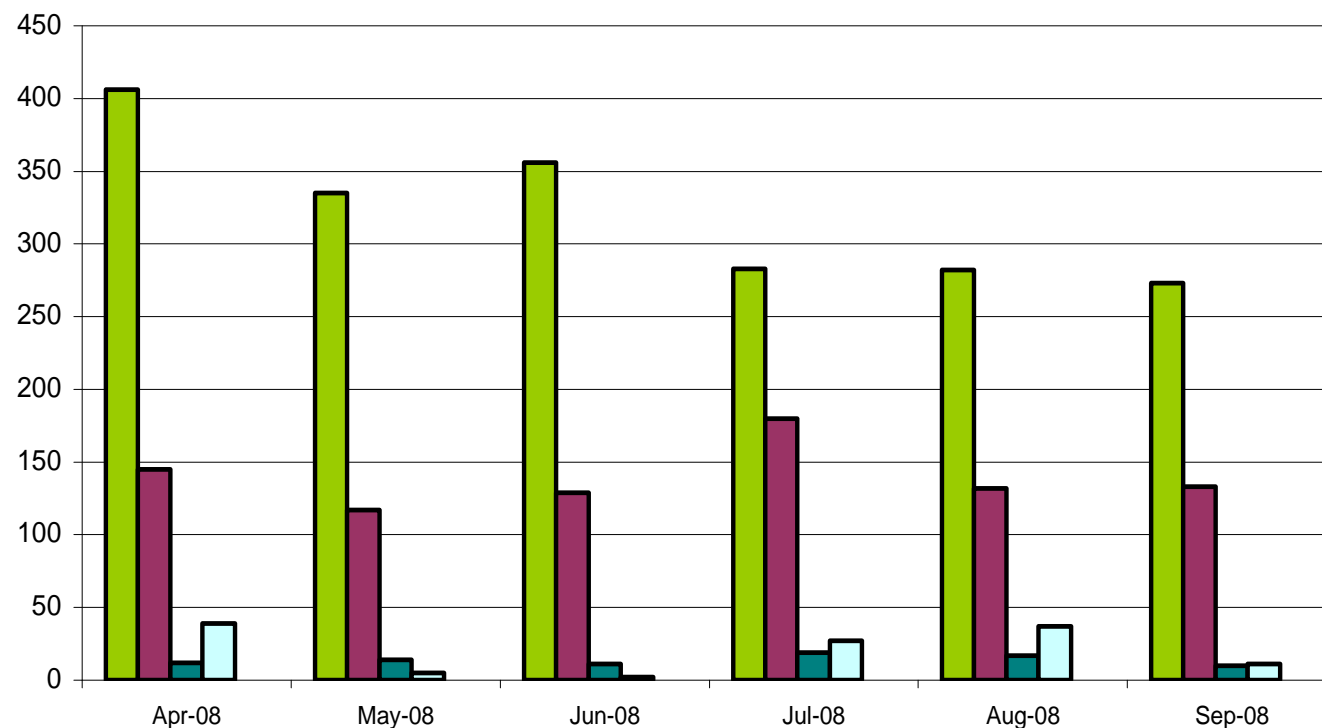
Total Arrests and Statutory Charge Referrals



	Apr-08	May-08	Jun-08	Jul-08	Aug-08	Sep-08
■ Total Arrests	2473	2753	2638	2729	2736	2593
■ Statutory Charge	602	471	498	509	468	427
Percentage	24.3%	17.1%	18.9%	18.7%	17.1%	16.5%

Source: MIS (BTJ Data Sep) and CPS (PTPM02-Sep)

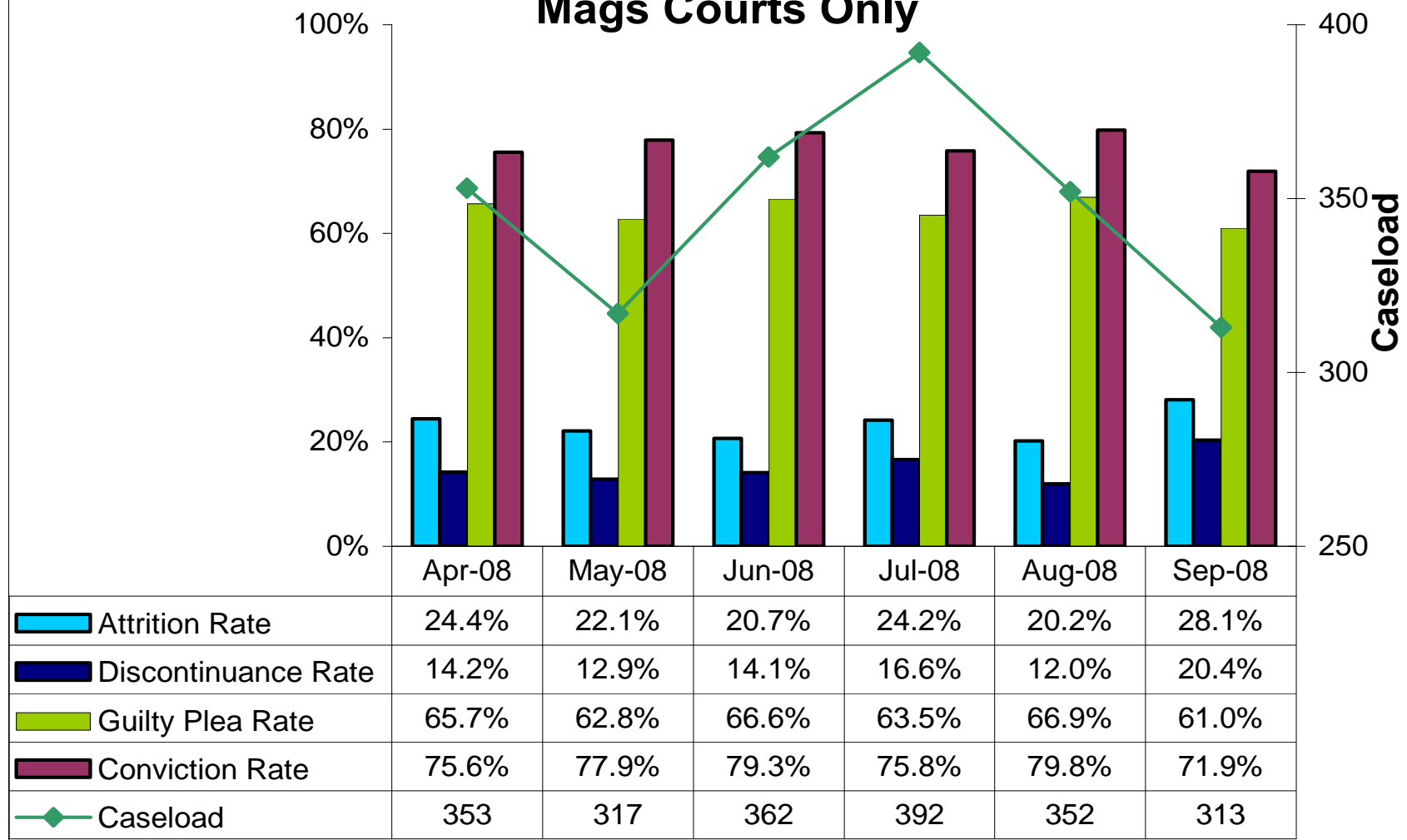
Statutory Charge Referrals by "Last Decision Made"



	Apr-08	May-08	Jun-08	Jul-08	Aug-08	Sep-08
■ Charge	406	335	356	283	282	273
■ NFA	145	117	129	180	132	133
■ Caution, TIC, etc	12	14	11	19	17	10
■ Other	39	5	2	27	37	11
■ On Bail for Further Enquiries	0	0	0	0	0	0

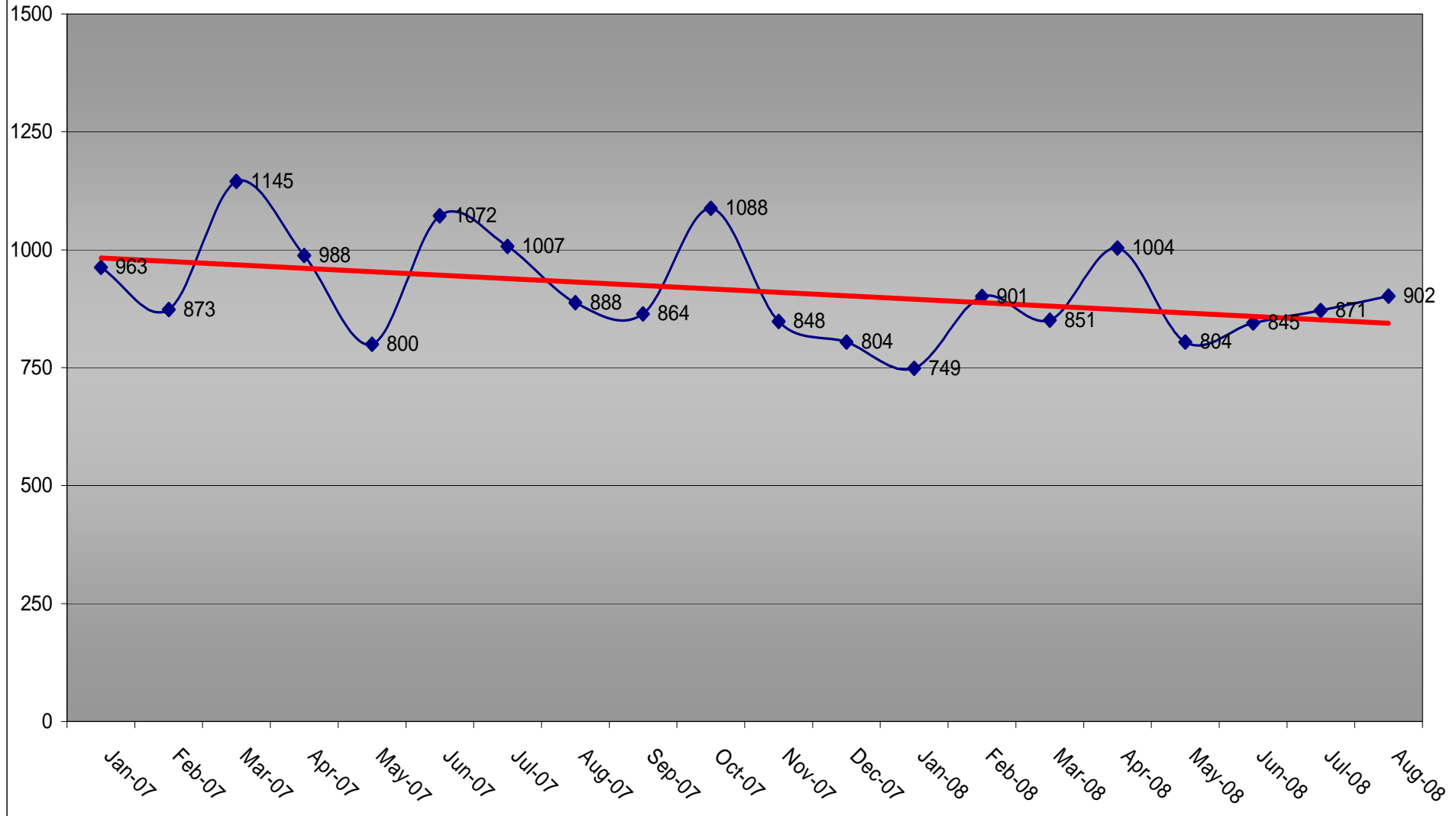
Source: CPS PTPM02 (Sep 08)

Statutory Charging Programme - Outcomes for Defendants Subject to Pre-Charge Decisions Mags Courts Only



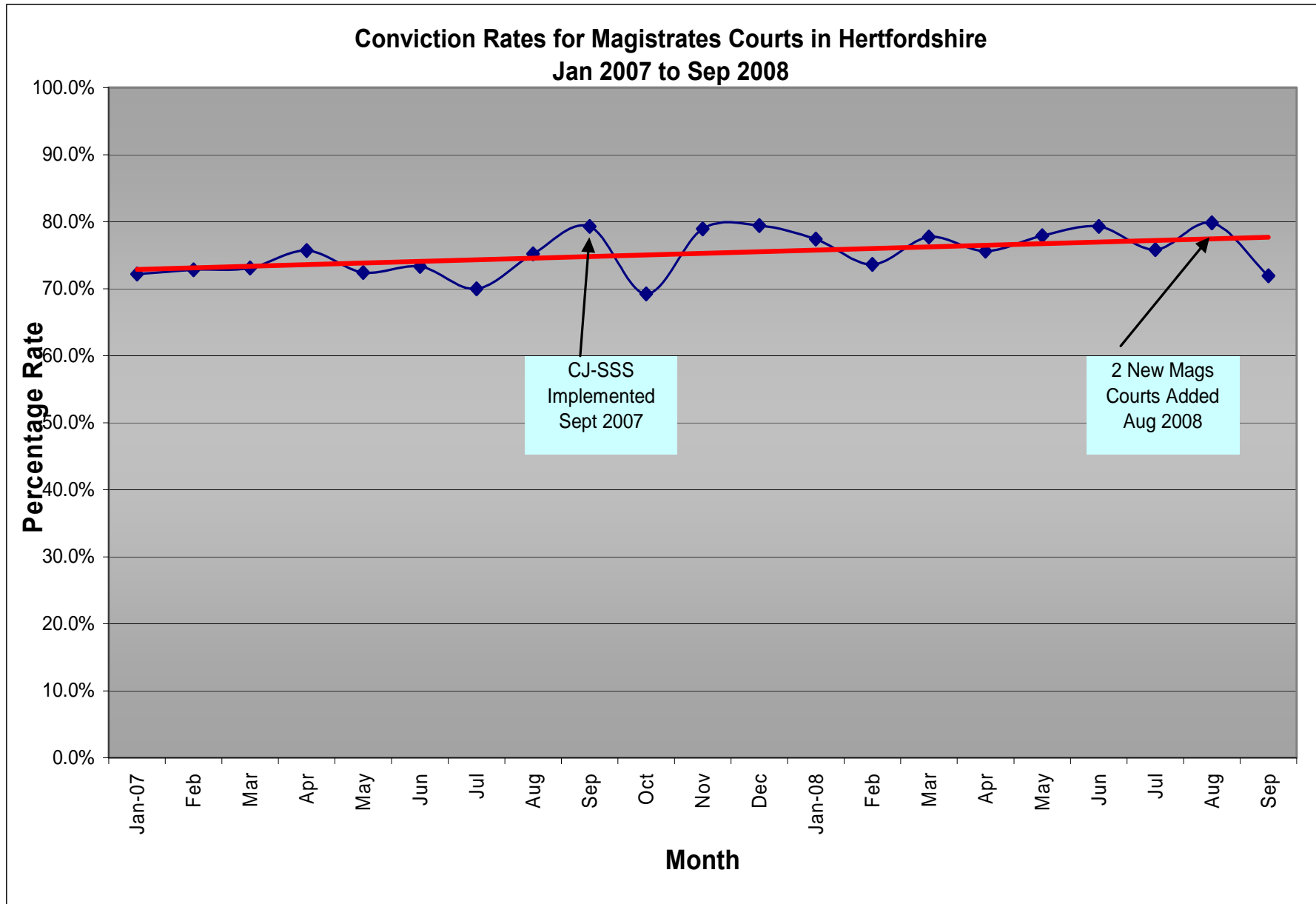
Source: PCD Benefits Model Sep 2008

Convictions - Jan '07 to August '08



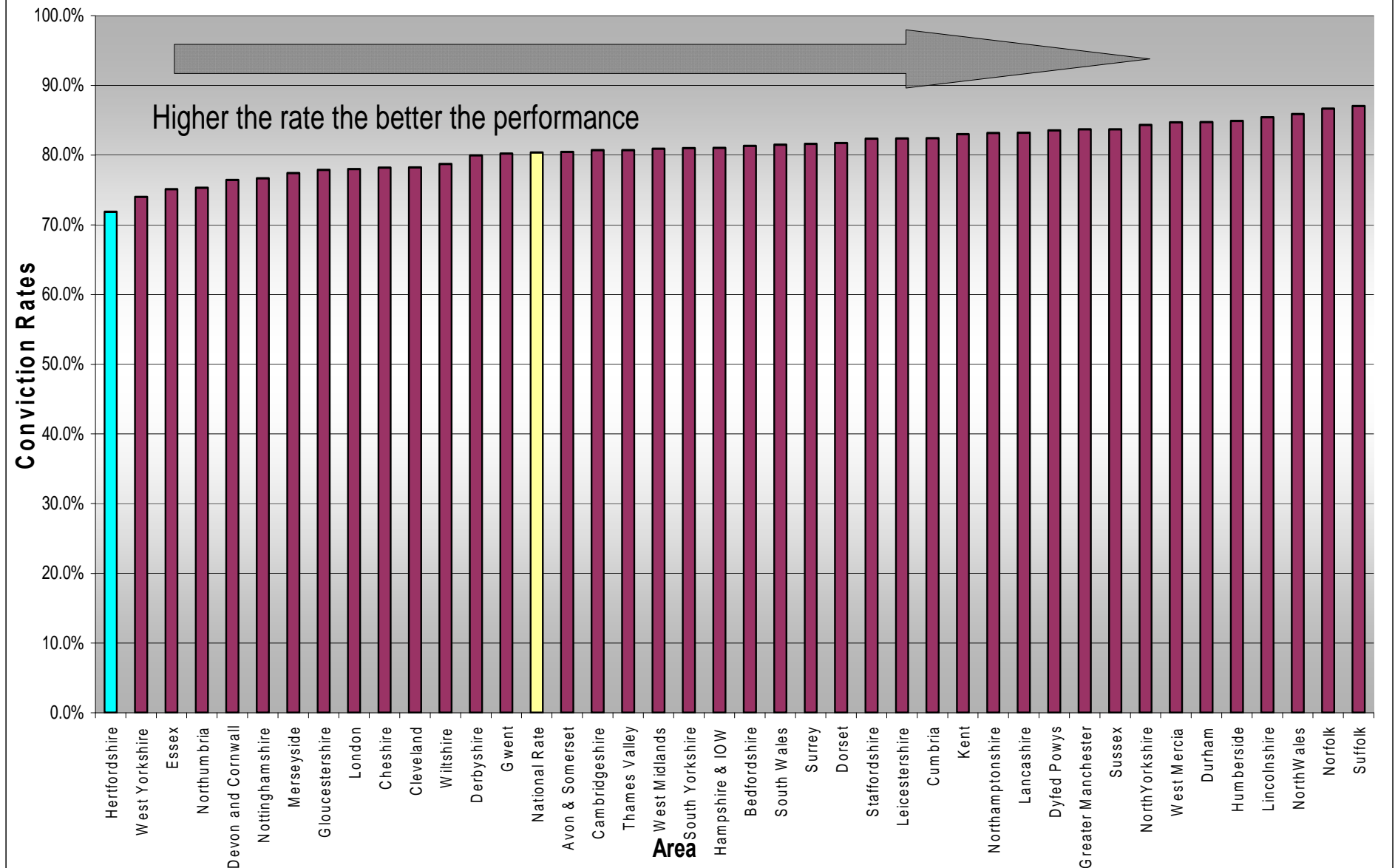
Source: MIS (BTJ Data –Jan '07 to August '08)

A Conviction is defined as: A judgment of the court based either on the decision of a jury or judge that the defendant is guilty of the crime for which he or she was tried.



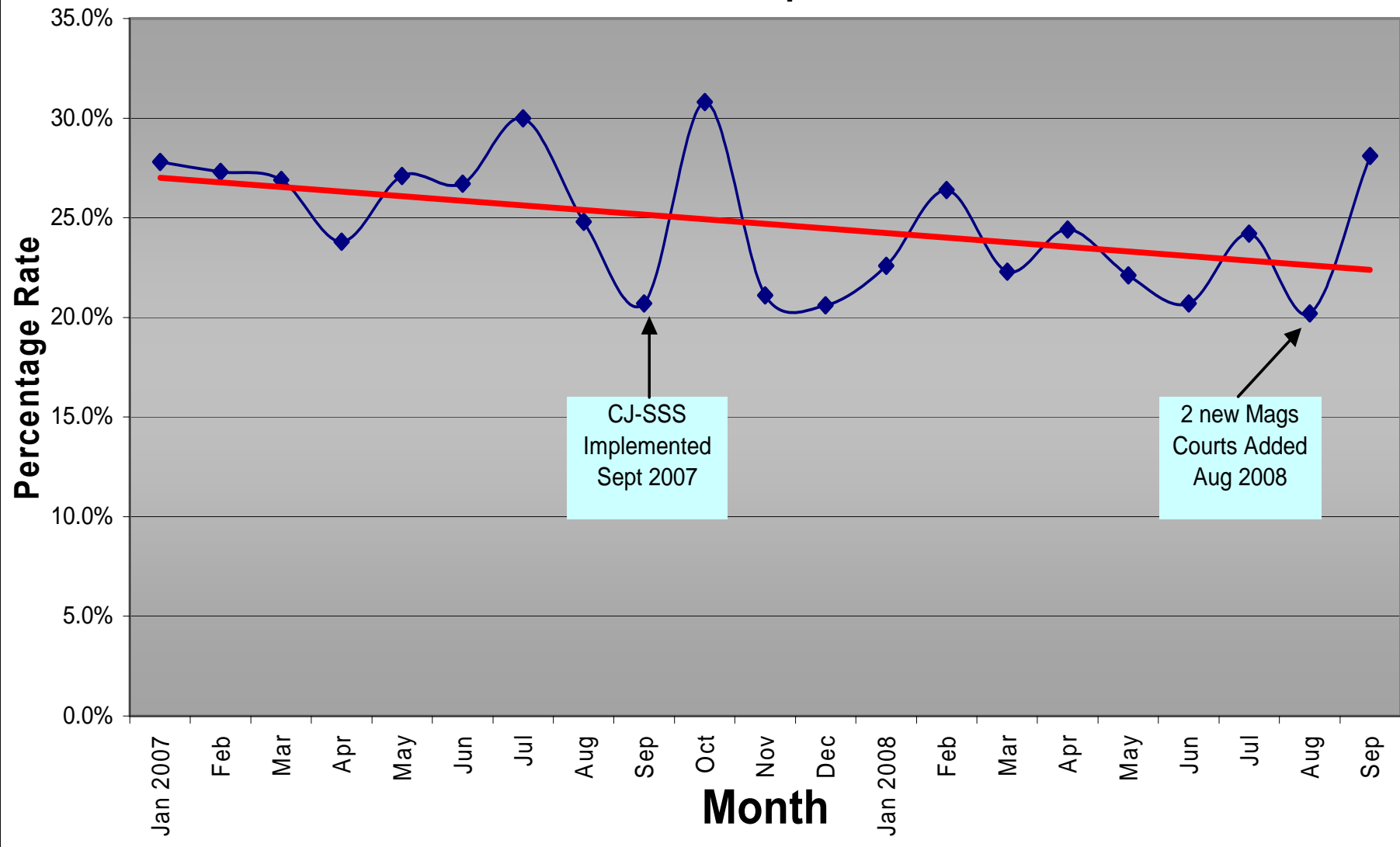
Source: PCD Benefits Model – Sept 2008

Convictions - September 2008



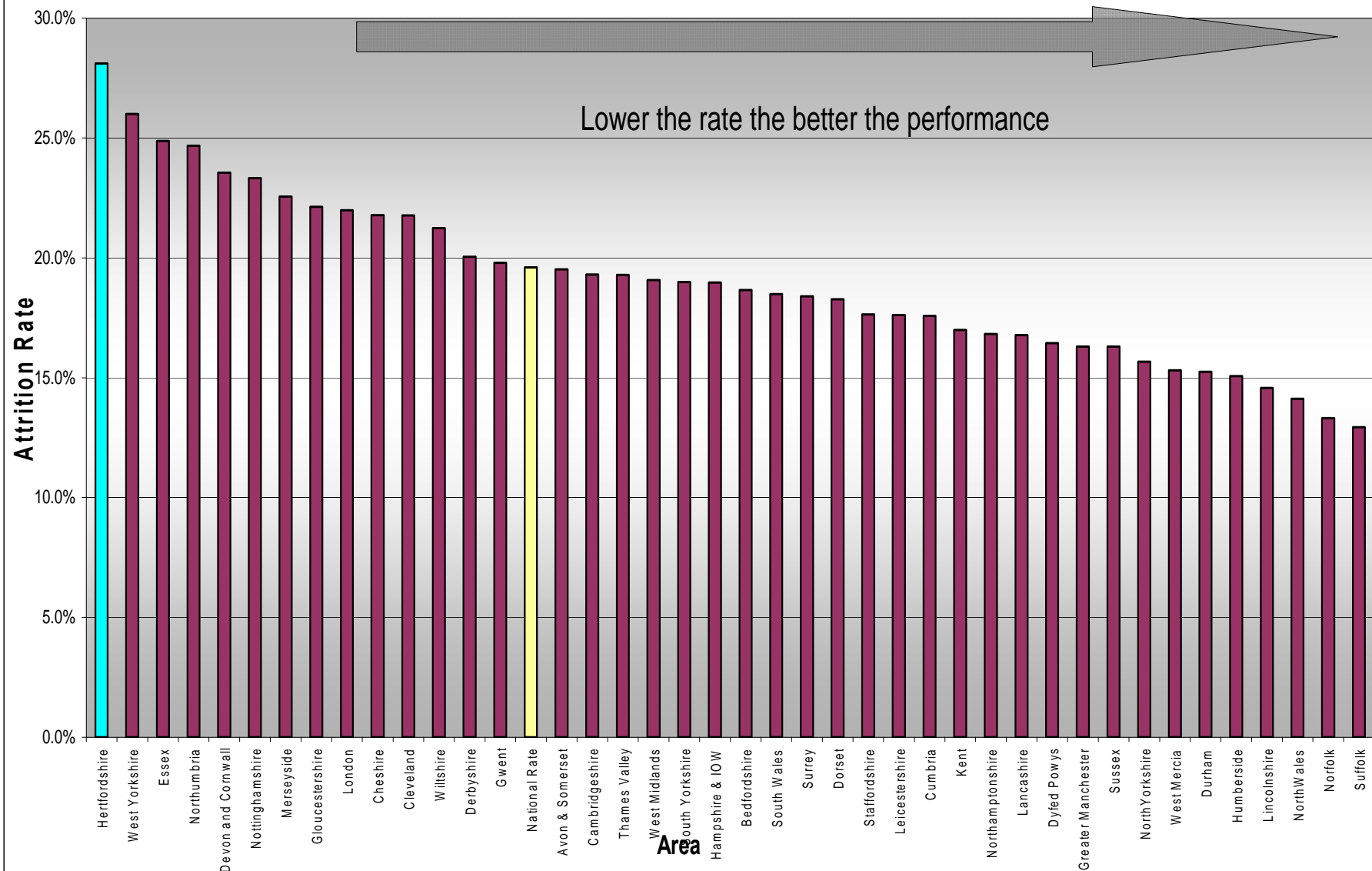
Source: PCD Benefits Model – September 2008

Attrition Rate for Magistrates Cases in Hertfordshire Jan 2007 to Sept 2008



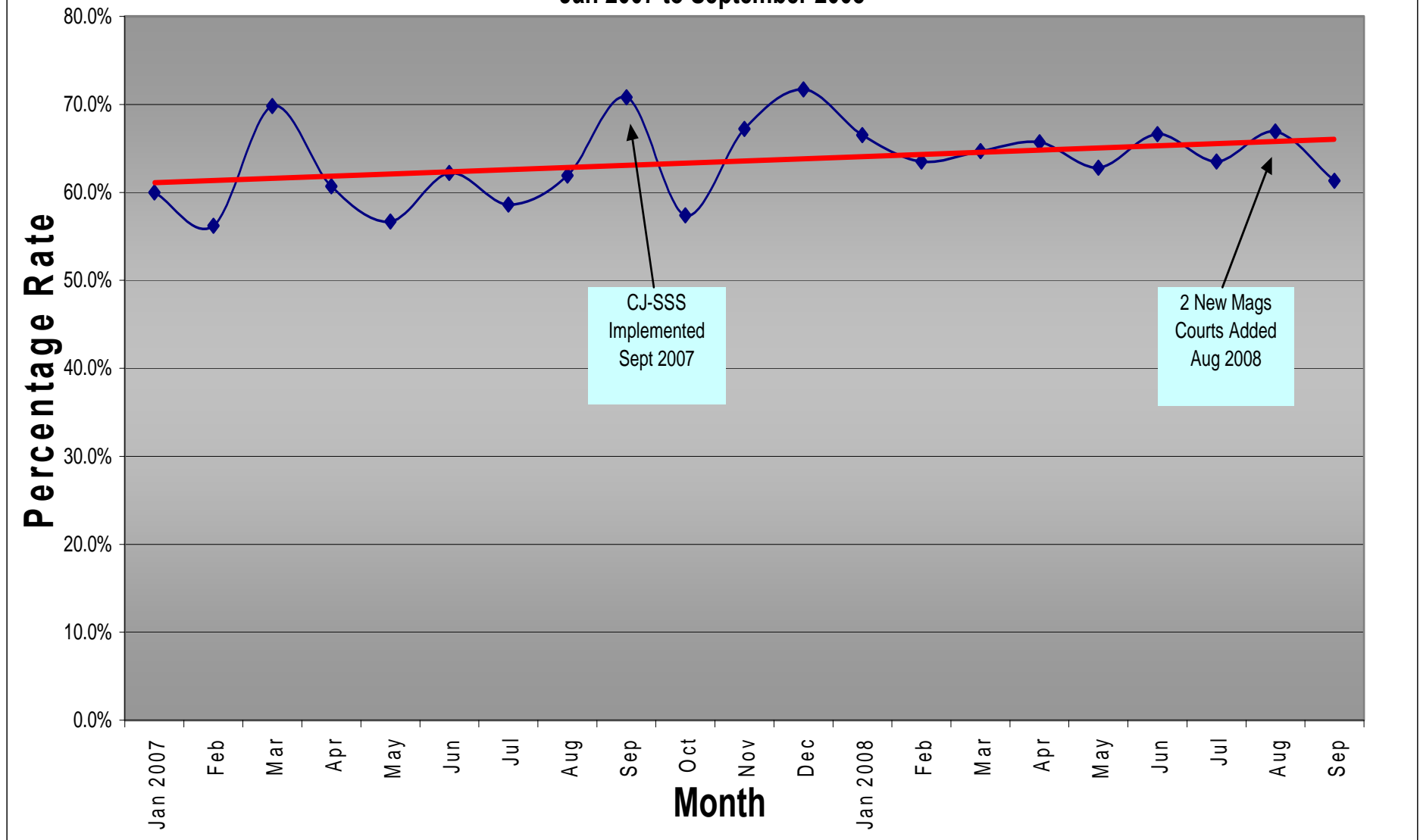
Source: PCD Benefits Model – September 2008

Magistrates Court Attrition - September 2008



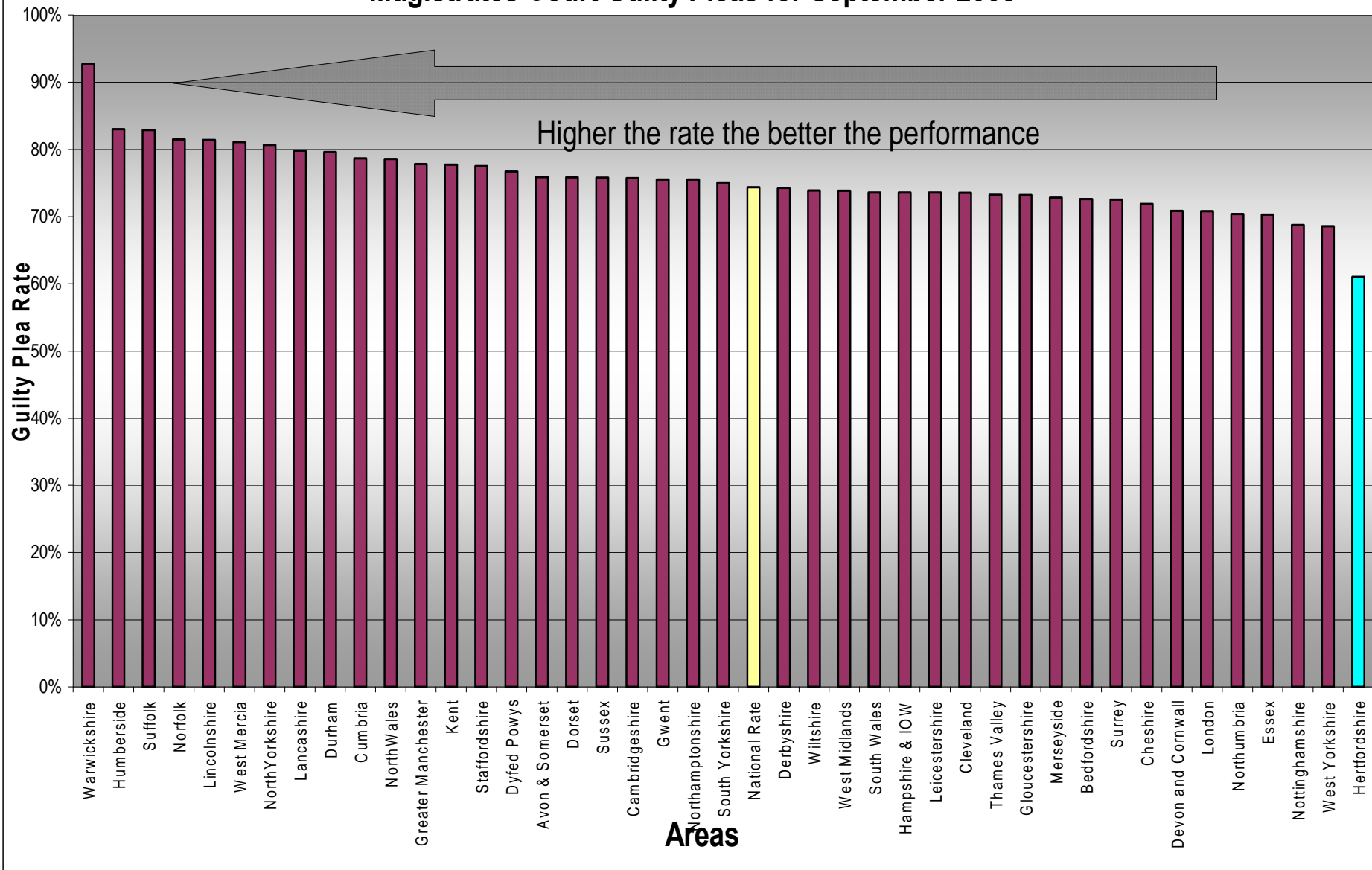
Source: PCD Benefits Model –September 2008

Guilty Plea Rate of Magistrates Cases in Hertfordshire Jan 2007 to September 2008



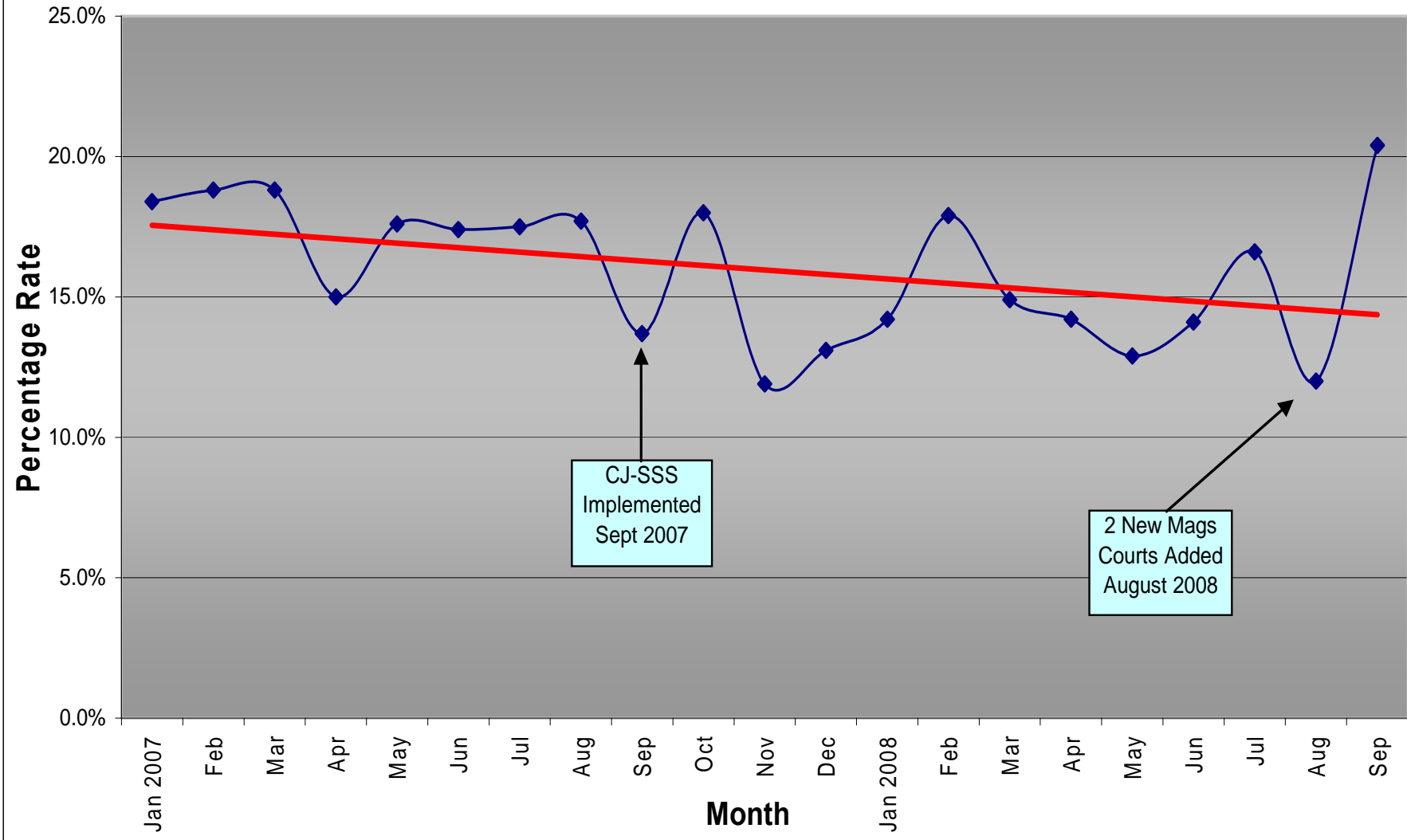
Source: PCD Benefits Model -- September 2008

Magistrates Court Guilty Pleas for September 2008



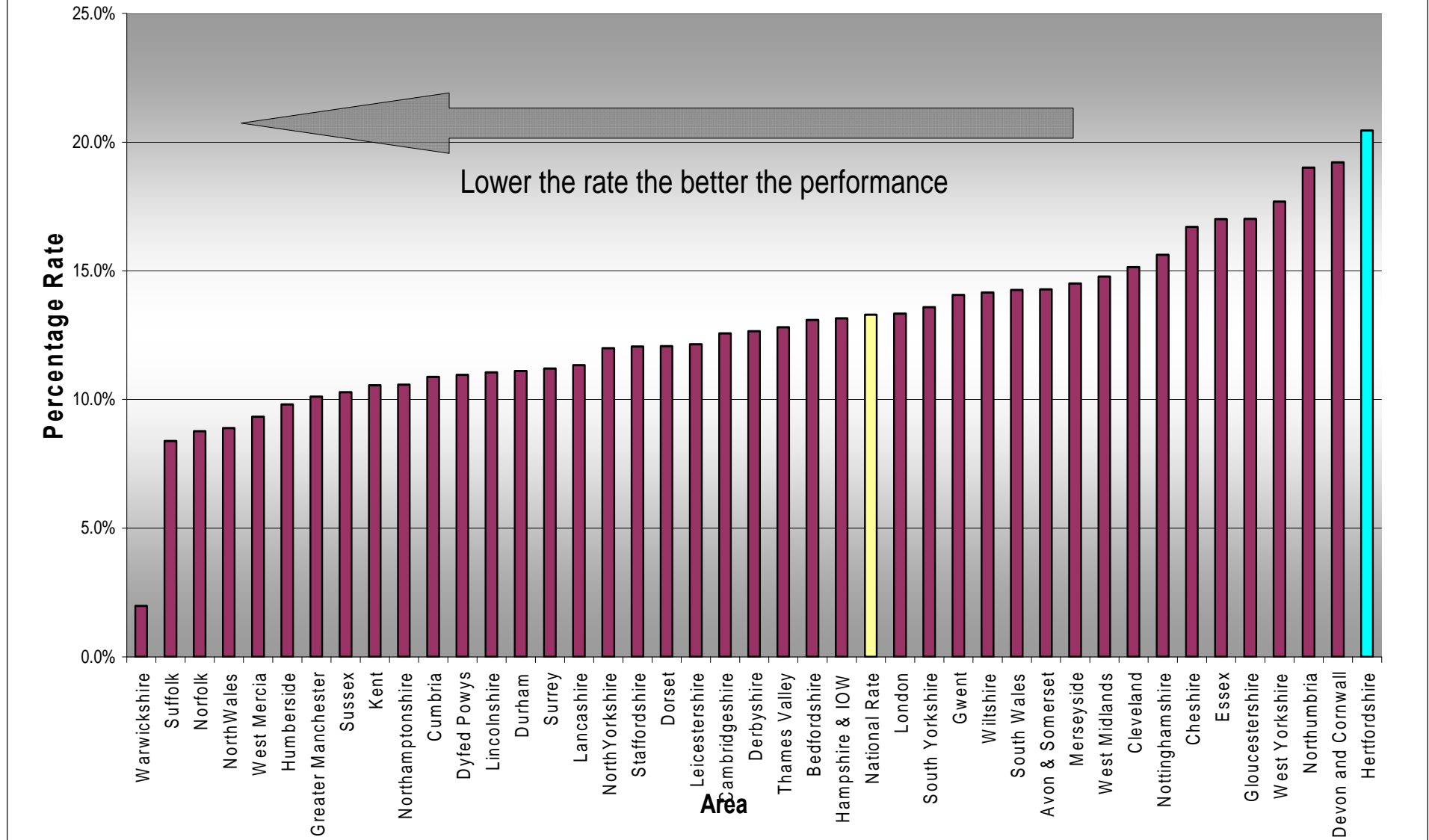
Source: PCD Benefits Model – September 2008

**Discontinuance Rate of Magistrates Cases in Hertfordshire
Jan 2007 to September 2008**

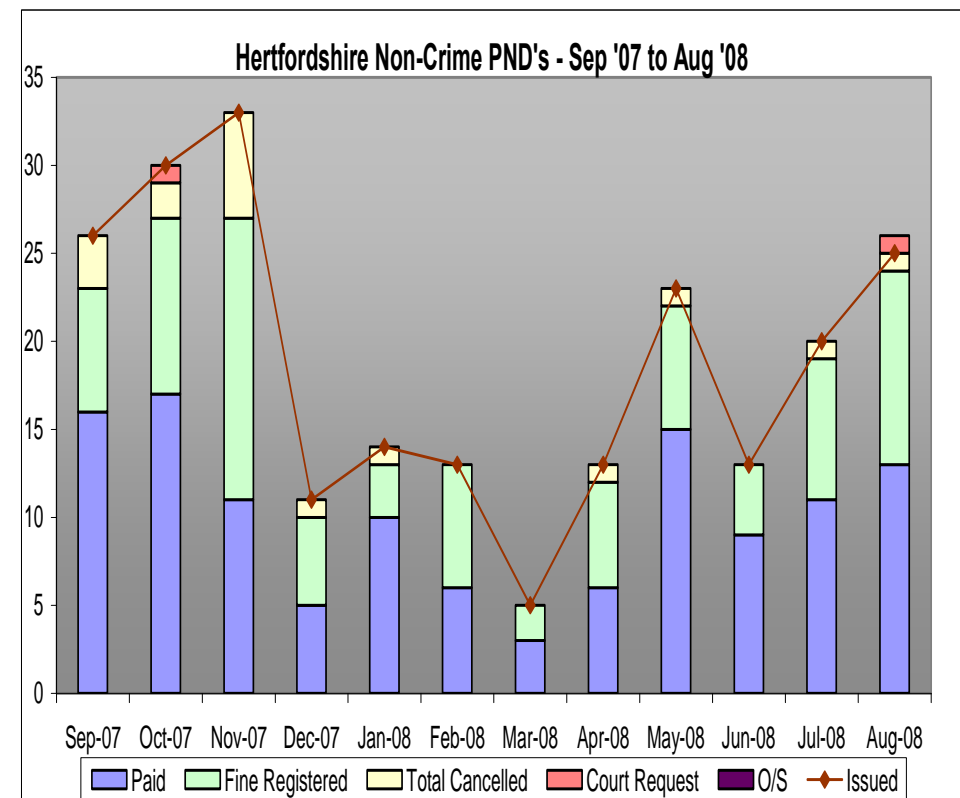
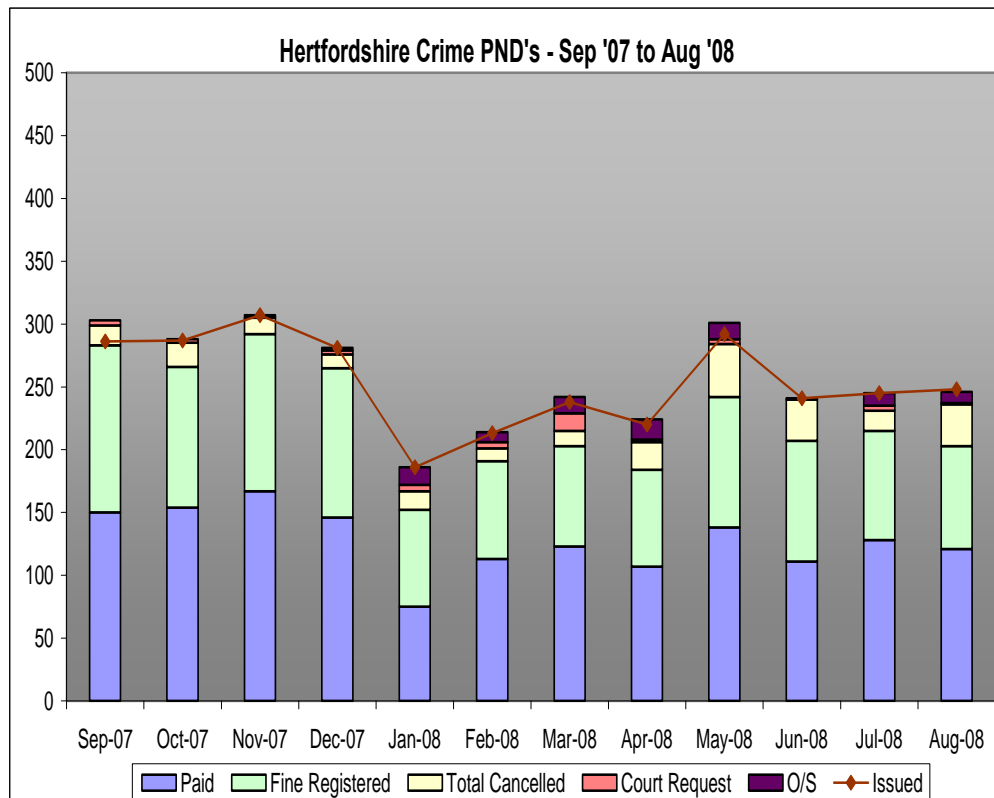


Source: PCD Benefits Model – September 2008

Magistrates Court Discontinuance for September 2008



Source: PCD Benefits Model –September 2008



	Issued	Paid	Fine Registered	Total Cancelled	Court Request	O/S
Sep-07	286	150	133	16	4	0
Oct-07	287	154	112	19	3	0
Nov-07	307	167	125	13	2	0
Dec-07	281	146	119	11	3	2
Jan-08	186	75	77	15	5	14
Feb-08	213	113	78	10	5	8
Mar-08	238	123	80	12	14	13
Apr-08	220	107	77	22	2	16
May-08	292	138	104	42	4	13
Jun-08	241	111	96	33	1	0
Jul-08	245	128	87	16	4	10
Aug-08	248	121	82	33	1	9

	Issued	Paid	Fine Registered	Total Cancelled	Court Request	O/S
Sep-07	26	16	7	3	0	0
Oct-07	30	17	10	2	1	0
Nov-07	33	11	16	6	0	0
Dec-07	11	5	5	1	0	0
Jan-08	14	10	3	1	0	0
Feb-08	13	6	7	0	0	0
Mar-08	5	3	2	0	0	0
Apr-08	13	6	6	1	0	0
May-08	23	15	7	1	0	0
Jun-08	13	9	4	0	0	0
Jul-08	20	11	8	1	0	0
Aug-08	25	13	11	1	1	0

Source: CTO – Aug 2008

CJ-SSS Performance Reports – September 2008

CJ-SSS Hertfordshire	Local Base	Apr-08	May-08	Jun-08	Jul-08	Aug-08	Sep-08
Initial Plea Rate at first listing	71%	80% 449	80% 465	76% 358	78% 414	72% 402	75% 444
Initial guilty plea rate at first listing or before	49%	55% 310	58% 340	56% 265	59% 315	52% 289	56% 325
Initial not guilty plea at first listing or before	27%	23% 127	21% 125	20% 93	19% 99	20% 113	21% 119
Case where no plea is entered at first hearing	19%	4% 23	3% 19	3% 14	4% 20	4% 20	5% 28
Defendant fails to appear at first hearing	7%	11% 61	8% 49	13% 61	10% 53	13% 70	12% 68
Committals to Crown Court	7%	7% 42	9% 51	9% 61	8% 42	12% 66	6% 37
Caseload at first hearing		563	584	474	529	558	577
Average number of days from charge to disposal	OCJR = 42			74			54
Initial guilty pleas disposed of at first listing	OCJR = 60%	75% 231	71% 243	72% 190	73% 229	72% 209	77% 249

CJU Returns – September 2008

“Initial Plea Rate at 1st Hearing” and “Initial Guilty Plea Rates at 1st Hearing” have recovered following their falls in August.

“Committals to Crown Court” have dropped dramatically to just 6% (from 12%) and is now within target.

We have missed 2 targets in September:

- “Fail to Appear at First Hearing” is 5% pts off target for this month
- “Average number of days from charge to disposal” is 12 days off target for this month

Central Herts Magistrates Courts	Source	Target	Local Base	Apr-08	May-08	Jun-08	Jul-08	Aug-08	Sep-08
Initial Plea Rates									
Initial Plea Rate at first listing	CJU		67%	77%	82%	76%	76%	72%	75%
				110	117	110	98	124	127
Initial guilty plea rate at first listing or before	CJU		49%	62%	61%	58%	68%	52%	52%
				87	87	83	84	91	88
Initial not guilty plea at first listing or before	CJU		18%	15%	21%	19%	11%	19%	23%
				21	30	27	14	33	39
Case where no plea is entered at first hearing	CJU		22%	7%	3%	6%	7%	8%	7%
				10	5	9	9	14	12
Defendant fails to appear at first hearing	CJU		7%	7%	5%	8%	8%	9%	12%
				10	7	12	10	16	20
Committals to Crown Court	CJU		4%	9%	10%	9%	6%	11%	6%
				12	14	13	7	19	11
First hearing									
Caseload at first hearing	CJU			140	143	144	124	173	170
% of cases adjourned without plea, by reason	CJU	Legal Aid		0%	14%	0%	11%		14%
					1		1		1
	CJU	Defence App		30%	14%	11%	33%		57%
				3	1	1	3		4
	CJU	Prosecution App		10%	0%	44%	11%		29%
			1		4	1		2	
CJU	No Advance Information		0%	0%	0%	0%		0%	
CJU	Other		60%	71%	44%	44%		0%	
			6	5	4	4			
% of Oral reports given	Probation			17%	8%	20%	10%	10%	13%
				14	6	15	9	6	60
% of SDRs	Probation			69%	76%	72%	78%	74%	74%
				58	54	54	72	45	354
% of FDRs dealt with the same day	Probation			14%	15%	8%	12%	16%	13%
				12	11	6	11	10	64
Disposals									
Initial guilty pleas disposed of at first listing	CJU	60%	73%	82%	74%	75%	68%	71%	72%
				71	64	62	57	65	63
Contested cases (including cases where initial plea was not guilty or no plea) disposed of in 2 hearings	CJU			86%	60%				
				6	3				
Contested cases (including cases where initial plea was not guilty or no plea) disposed of in 3 hearings	CJU	70%		100%	100%				
				1	2				
Timeliness									
Trials commenced within 8 weeks of first hearing	HMCS	80%							
Average number of days from charge to disposal in Magistrates Courts	HMCS	42				62			61
Average number of hearings for contested cases	HMCS	2							
Cracked and Ineffective trials									
% Effective trials	HMCS		42.9%	41.5%	34.8%	40.9%	46.0%	53.1%	48.9%
% Cracked trials	HMCS	29.5%	30.7%	29.7%	41.6%	47.3%	37.9%	35.8%	34.1%
% Ineffective trials	HMCS	19.0%	26.1%	28.8%	23.6%	11.8%	16.1%	11.1%	17.0%
% Vacated trials	HMCS		30.0%	21.9%	23.3%	35.4%	31.5%	28.9%	25.4%
% Discontinued trials	CPS		10.0%	11.9%	11.0%	8.3%	12.6%	10.8%	11.1%

East Herts Magistrates Courts	Source	Target	Local Base	Apr-08	May-08	Jun-08	Jul-08	Aug-08	Sep-08
Initial Plea Rates									
Initial Plea Rate at first listing	CJU		76%	81% 95	73% 108	74% 67	77% 104	73% 77	82% 75
Initial guilty plea rate at first listing or before	CJU		49%	50% 59	46% 68	51% 46	50% 68	52% 55	62% 57
Initial not guilty plea at first listing or before	CJU		28%	31% 36	27% 40	23% 21	27% 36	21% 22	20% 18
Case where no plea is entered at first hearing	CJU		22%	3% 3	3% 5	1% 1	2% 3	2% 2	5% 5
Defendant fails to appear at first hearing	CJU		6%	9% 10	9% 13	19% 17	13% 18	8% 8	9% 8
Committals to Crown Court	CJU		7%	8% 9	15% 22	7% 6	7% 10	17% 17	4% 4
First hearing									
Caseload at first hearing	CJU			117	148	91	135	104	92
% of cases adjourned without plea, by reason	CJU	Legal Aid		33% 1	20% 1	100% 1	33% 1	0% 1	40% 2
	CJU	Defence App		0% 1	20% 1	0% 1	33% 1	0% 1	0% 1
	CJU	Prosecution App		0% 1	20% 1	0% 1	0% 1	100% 2	60% 3
	CJU	No Advance Information		0% 1	0% 1	0% 1	0% 1	0% 1	0% 1
	CJU	Other		66% 2	40% 2	0% 1	33% 1	0% 1	0% 1
% of Oral reports given	Probation			17% 9	14% 5	12% 5	5% 3	6% 3	10% 29
% of SDRs	Probation			69% 36	57% 21	70% 30	82% 50	90% 45	77% 223
% of FDRs dealt with the same day	Probation			13% 7	30% 11	19% 8	13% 8	4% 2	17% 38
Disposals									
Initial guilty pleas disposed of at first listing	CJU	60%	73%	75% 44	75% 51	70% 32	81% 55	65% 36	77% 44
Contested cases (including cases where initial plea was not guilty or no plea) disposed of in 2 hearings	CJU			75% 6	50% 8				
Contested cases (including cases where initial plea was not guilty or no plea) disposed of in 3 hearings	CJU	70%		100% 2	100% 8				
Timeliness									
Trials commenced within 8 weeks of first hearing	HMCS	80%							
Average number of days from charge to disposal in Magistrates Courts	HMCS	42				92			55
Average number of hearings for contested cases	HMCS	2							
Cracked and Ineffective trials									
% Effective trials	HMCS		41.3%	40.9%	51.1%	44.9%	44.4%	46.6%	53.4%
% Cracked trials	HMCS	29.5%	30.7%	28.8%	20.2%	30.3%	28.6%	39.7%	34.5%
% Ineffective trials	HMCS	19.0%	28.0%	30.3%	28.7%	24.7%	27.0%	13.8%	12.1%
% Vacated trials	HMCS		21.7%	10.2%	24.8%	25.2%	24.1%	21.6%	31.8%
% Discontinued trials	CPS		8.5%	12.6%	13.3%	11.0%	12.4%	11.4%	21.8%

North Herts Magistrates Courts	Source	Target	Local Base	Apr-08	May-08	Jun-08	Jul-08	Aug-08	Sep-08
Initial Plea Rates									
Initial Plea Rate at first listing	CJU		76%	75% 97	82% 103	83% 89	76% 95	72% 92	80% 107
Initial guilty plea rate at first listing or before	CJU		49%	47% 61	56% 70	61% 65	56% 70	46% 59	52% 70
Initial not guilty plea at first listing or before	CJU		28%	28% 36	26% 33	22% 24	20% 25	26% 33	28% 37
Case where no plea is entered at first hearing	CJU		22%	1% 1	4% 5	1% 1	3% 4	1% 1	2% 3
Defendant fails to appear at first hearing	CJU		6%	17% 22	10% 12	7% 7	13% 16	13% 16	13% 17
Committals to Crown Court	CJU		7%	8% 10	5% 6	9% 10	8% 10	15% 19	5% 7
First hearing									
Caseload at first hearing	CJU			130	126	107	125	128	134
% of cases adjourned without plea, by reason	CJU	Legal Aid		0%	20% 1	0%	75% 3	0%	
	CJU	Defence App		0%	20% 1	0%	0%	0%	100% 3
	CJU	Prosecution App		0%	20% 1	100% 1	0%	100% 1	
	CJU	No Advance Information		0%	0%	0%	0%	0%	
	CJU	Other		100% 1	40% 2	0%	25% 1	0%	
% of Oral reports given	Probation			14% 8	17% 11	21% 10	19% 10	17% 9	18% 59
% of SDRs	Probation			76% 45	58% 38	65% 31	76% 41	68% 36	69% 229
% of FDRs dealt with the same day	Probation			10% 6	26% 17	15% 7	6% 3	15% 8	14% 46
Disposals									
Initial guilty pleas disposed of at first listing	CJU	60%	73%	66% 40	83% 58	66% 45	69% 48	81% 48	80% 56
Contested cases (including cases where initial plea was not guilty or no plea) disposed of in 2 hearings	CJU			60% 6	57% 4	76% 13	47% 9		
Contested cases (including cases where initial plea was not guilty or no plea) disposed of in 3 hearings	CJU	70%		100% 4	100% 3	100% 4	89% 8		
Timeliness									
Trials commenced within 8 weeks of first hearing	HMCS	80%							
Average number of days from charge to disposal in Magistrates Courts	HMCS	42				78			59
Average number of hearings for contested cases	HMCS	2							
Cracked and Ineffective trials									
% Effective trials	HMCS		41.3%	46.9%	38.1%	39.3%	51.5%	48.5%	44.8%
% Cracked trials	HMCS	29.5%	30.7%	28.3%	29.5%	39.3%	31.1%	27.9%	37.3%
% Ineffective trials	HMCS	19.0%	28.0%	24.8%	32.4%	21.4%	17.5%	23.5%	17.9%
% Vacated trials	HMCS		21.7%	19.9%	29.1%	28.8%	28.0%	36.4%	31.6%
% Discontinued trials	CPS		8.5%	12.6%	13.3%	11.0%	12.4%	11.4%	21.8%

West Herts Magistrates Courts	Source	Target	Local Base	Apr-08	May-08	Jun-08	Jul-08	Aug-08	Sep-08
Initial Plea Rates									
Initial Plea Rate at first listing	CJU		69%	78%	82%	70%	81%	71%	75%
				147	137	92	117	109	135
Initial guilty plea rate at first listing or before	CJU		49%	59%	69%	54%	64%	55%	61%
				103	115	71	93	84	110
Initial not guilty plea at first listing or before	CJU		34%	19%	13%	16%	17%	16%	14%
				34	22	21	24	25	25
Case where no plea is entered at first hearing	CJU		13%	5%	2%	2%	3%	2%	4%
				9	4	3	4	3	8
Defendant fails to appear at first hearing	CJU		8%	11%	10%	19%	6%	20%	13%
				19	17	25	9	30	23
Committals to Crown Court	CJU		9%	6%	5%	9%	10%	7%	8%
				11	9	12	15	11	15
First hearing									
Caseload at first hearing	CJU			176	167	132	145	153	181
% of cases adjourned without plea, by reason	CJU	Legal Aid		0%	60%	0%	50%	67%	0%
					3		2	2	
	CJU	Defence App		0%	0%	33%	0%	0%	0%
						1			
	CJU	Prosecution App		0%	0%	0%	0%	0%	0%
% of Oral reports given	CJU	No Advance Information		0%	0%	0%	0%	0%	0%
	CJU	Other		100%	40%	67%	50%	33%	0%
				9	2	2	2	1	
% of SDRs	Probation			14%	18%	7%	17%	15%	15%
				12	16	6	13	11	79
% of FDRs dealt with the same day	Probation			69%	64%	72%	63%	71%	67%
				59	57	63	48	53	347
	Probation			16%	18%	21%	20%	15%	18%
				14	16	18	15	11	94
Disposals									
Initial guilty pleas disposed of at first listing	CJU	60%	73%	74%	70%	72%	74%	71%	78%
				76	80	51	69	60	86
Contested cases (including cases where initial plea was not guilty or no plea) disposed of in 2 hearings	CJU						57%		
							12		
Contested cases (including cases where initial plea was not guilty or no plea) disposed of in 3 hearings	CJU	70%					100%		
							9		
Timeliness									
Trials commenced within 8 weeks of first hearing	HMCS	80%							
Average number of days from charge to disposal in Magistrates Courts	HMCS	42				73			49
Average number of hearings for contested cases	HMCS	2							
Cracked and Ineffective trials									
% Effective trials	HMCS		46.3%	48.4%	55.4%	45.1%	49.5%	56.0%	50.5%
% Cracked trials	HMCS	29.5%	32.9%	29.7%	24.3%	33.3%	31.6%	33.0%	33.6%
% Ineffective trials	HMCS	19.0%	20.8%	22.0%	20.3%	21.6%	18.9%	11.0%	15.9%
% Vacated trials	HMCS		39.2%	25.4%	33.9%	32.0%	33.6%	31.1%	26.2%
% Discontinued trials	CPS		10.8%	15.2%	12.7%	11.7%	16.6%	12.3%	15.8%

The number of Conditional Cautions administered per month (September)

	2005-06	2006-07	07-08 Q1	07-08 Q2	07-08 Q3	Jan-08	Feb-08	Mar-08	Apr-08	May-08	Jun-08	Jul-08	Aug-08	Sep-08	Total to date
Avon & Somerset		1	7	16	29	20	11	22	23	27	36	27	29	25	273
Bedfordshire		5	3	4	17	5	8	2	3	5	4	8	4	8	76
BTP		22	4	8	22	5	6	4	3	9	7	9	5	5	109
Cambridgeshire			10	21	20	6	3	4	5	5	11	5	3	7	100
Cheshire		41	41	27	64	21	15	19	14	17	15	13	9	8	304
Cleveland			5	8	18	3	4	6	10	11	4	7	5	5	86
Cumbria			14	19	26	10	20	16	6	13	8	8	11	8	159
Derbyshire		1	8	5	12	6	6	4	11	9	13	15	14	14	118
Devon and Cornwall			0	17	45	21	23	19	19	12	17	21	20	11	225
Dorset		45	54	41	51	31	13	16	15	11	19	14	16	19	345
Durham		1	15	28	21	7	8	5	13	2	4	10	4	12	130
Dyfed Powys		25	33	37	16	15	16	8	14	9	10	6	11	6	206
Essex			6	9	22	8	13	9	13	7	5	5	13	5	115
Gloucestershire			0	8	8	1	1	4	12	10	13	5	2	4	68
Greater Manchester		21	12	4	8	2	4	8	14	12	11	21	7	9	133
Gwent			3	0	0	1	2	1	0	3	0	0	0	1	11
Hampshire & IOW		2	5	2	21	22	15	24	21	23	18	43	35	45	276
Hertfordshire			0	4	4	3	3	4	5	4	3	5	3	4	42
Humberside		9	16	15	7	3	11	14	10	11	17	19	14	21	167
Kent			5	14	21	15	16	15	24	15	15	16	8	18	182
Lancashire	323	1037	359	316	329	107	88	109	102	89	99	76	73	107	3214
Leicestershire			0	3	3	3	2	11	5	8	6	12	10	18	81
Lincolnshire			0	4	5	2	3	1	1	5	0	0	3	1	25
London		30	73	81	113	35	50	43	60	59	36	47	52	45	724
Merseyside	11	71	70	43	58	12	16	24	33	32	64	35	41	53	563
Norfolk			4	11	60	25	16	36	50	32	23	30	24	19	330
Northamptonshire					13	3	2	8	3	2	1	2	2	2	38
Northumbria	22	25	3	3	9	9	13	8	4	10	9	6	5	5	131
North Wales		21	32	68	63	27	13	27	22	9	25	24	18	22	371
North Yorkshire			1	60	75	26	31	16	32	20	16	39	29	27	372
Nottinghamshire			0	3	2	2	3	2	5	1	6	15	15	14	68
South Wales		3	3	6	6	13	4	6	10	8	9	9	8	13	98
South Yorkshire	27	62	32	49	57	17	11	22	23	23	13	13	19	15	383
Staffordshire		8	7	21	16	0	7	6	11	14	13	8	10	9	130
Suffolk			7	15	21	6	7	8	9	7	6	5	6	7	104
Surrey			0	8	7	4	3	15	7	5	4	9	4	4	70
Sussex			2	2	20	8	6	15	18	13	22	14	16	21	157
Thames Valley	46	50	26	21	23	5	7	9	9	15	10	21	10	20	272
Warwickshire			1	1	2	0	0	6	4	6	11	7	12	5	55
West Mercia	43	46	3	9	34	16	12	13	11	20	10	16	13	17	263
West Midlands	38	33	3	8	9	1	2	1	21	37	28	20	19	26	246
West Yorkshire			3	6	25	16	3	11	13	11	11	8	6	17	130
Wiltshire			0	3	3	1	5	8	4	6	6	2	11	5	54
Total	510	1559	870	1028	1385	543	502	609	692	647	658	675	619	707	11004
Total to date	510	2069	2939	3967	5352	5895	6397	7006	7698	8345	9003	9678	10297	11004	

Source: NCPS – MIS September 2008

PPO ARRESTS Within MSF	2008 - 09													Total PPO Arrests YTD	% of Total PPO arrests in MSF	Total of Different PPOs Arrested Year to Date	Total PPOs (Aug 08)	% of Total PPOs within MSF	
		Apr	May	Jun	Jul	Aug	Sep	Oct	Nov	Dec	Jan	Feb	Mar						
Note: New structure for "Most Similar Groups"																			
Hertfordshire		41	26	33	32	25	14							171	9.3%	82	141	7.6%	
Avon & Somerset		31	33	41	33	35	42							215	11.7%	104	246	13.2%	
Bedfordshire		14	18	12	24	22	20							110	6.0%	52	105	5.6%	
Essex		19	23	18	23	6	14							103	5.6%	64	244	13.1%	
Hampshire		25	24	25	13	21	15							123	6.7%	79	263	14.1%	
Kent		38	31	38	35	28	43							213	11.6%	97	241	12.9%	
Sussex		81	91	80	72	68	60							452	24.6%	178	325	17.4%	
Thames Valley		81	73	69	76	76	75							450	24.5%	189	300	16.1%	
MSF Totals		330	319	316	308	281	283	0	0	0	0	0	0	1837	100.0%	845	1865	100.0%	

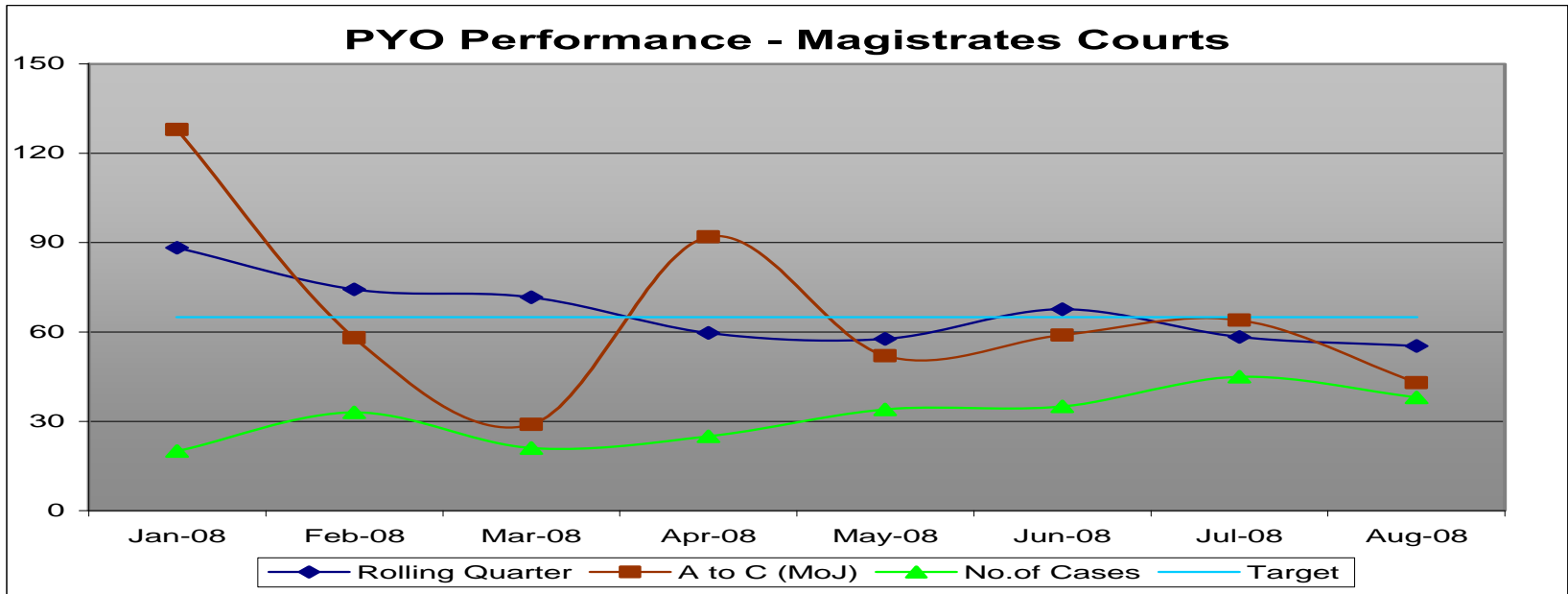
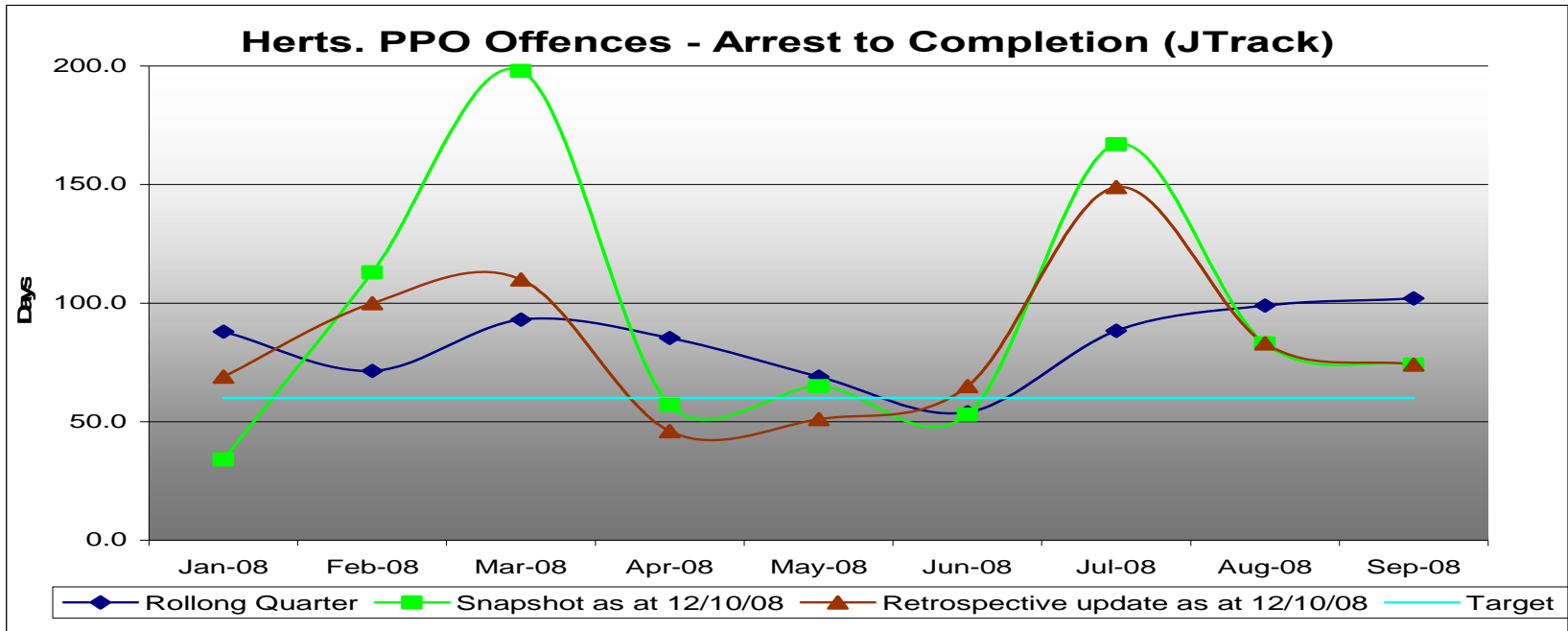
Source: JTRACK (CJS) as at 12/10/08

Prolific & Priority Offences – CJA Performance Summary September

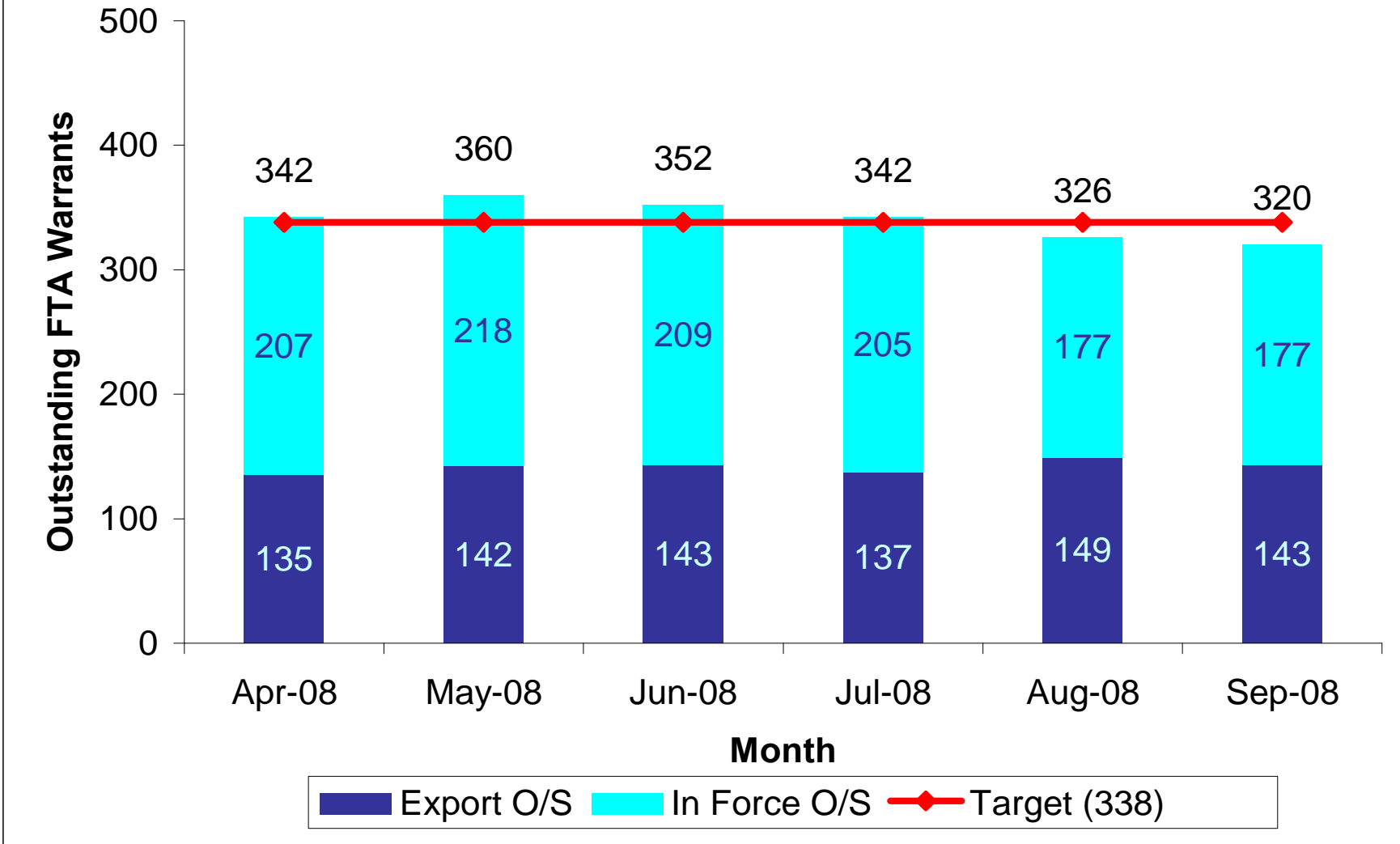
Area	No. of Arrested Offences	No. of Offenders Arrested	No. of Charged Offences	No. of Offenders Charged	No. of Discontinued Offences	Cautions	TICs	Convictions	OBTJ	Days from Arrest to Conviction
East	20	11	14	8	9	0	0	12	12	79
Central	0	0	0	0	0	0	0	0	0	n/a
West	4	2	7	4	1	0	2	14	16	71
Total	24	13	21	12	10	0	2	26	28	74

Source: JTRACK (CJS) as at 12/10/08

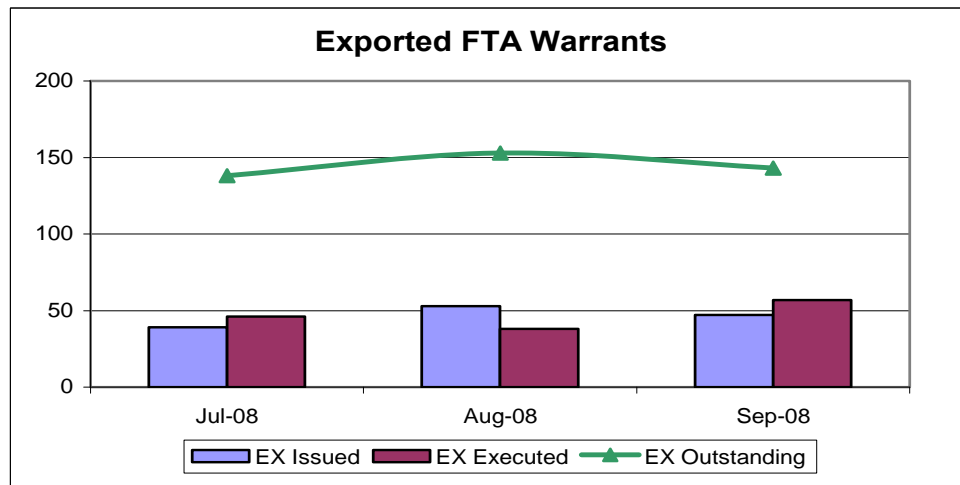
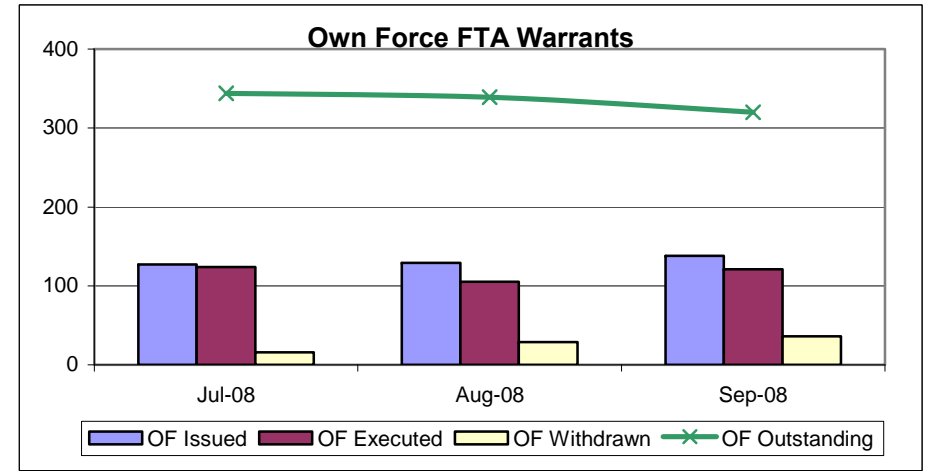
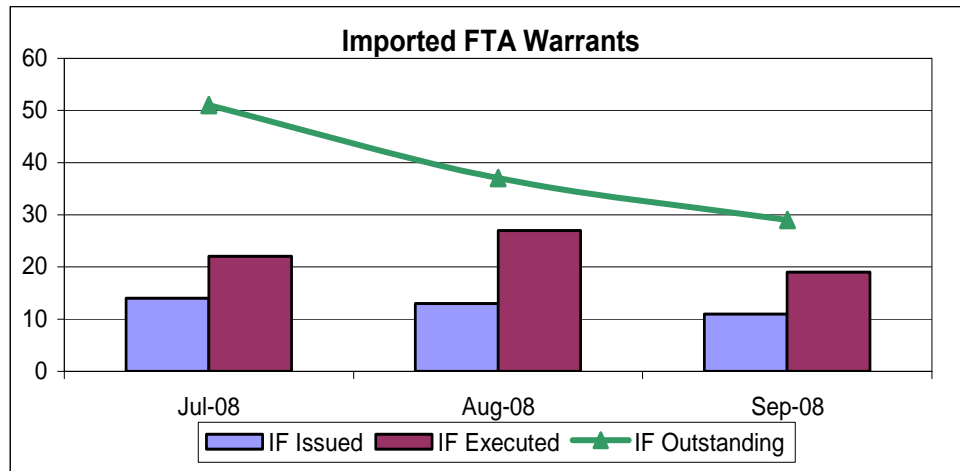
NOTE: Central figures are incomplete



FTA Warrants



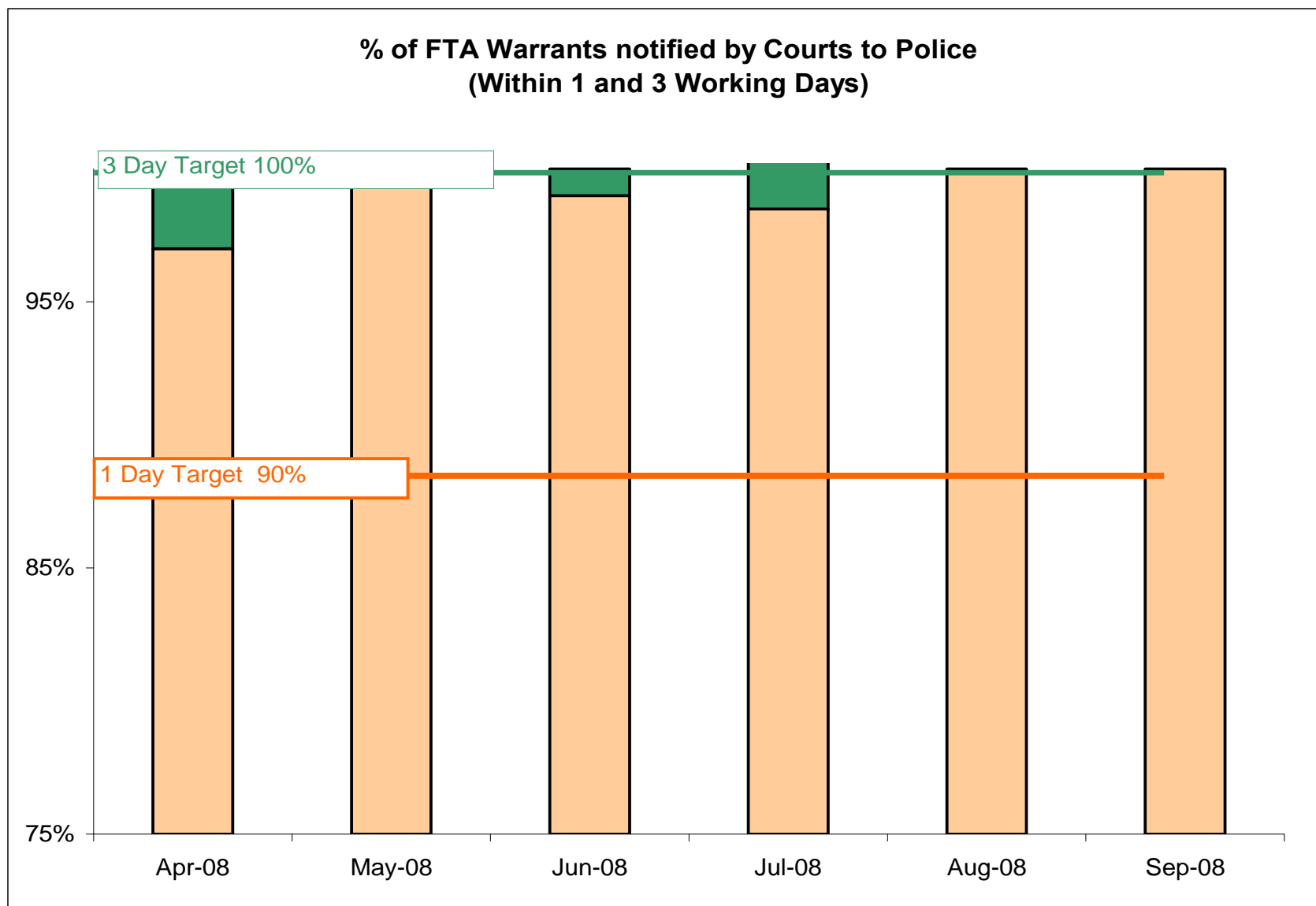
Source: Warrant's Monthly (Ops. Support) – September 2008



FTA WARRANTS	Jul 08	Aug 08	Sep 08
Imported Warrants Received	14	13	11
Imported Warrants Executed	22	27	19
Imported Warrants Outstanding	51	37	29
Warrants Issued in Force	127	129	138
Warrants Executed in Force	124	105	121
Warrants Withdrawn	16	29	36
Warrants Outstanding sent to other Forces	138	153	143

FTA Warrants		Target	Jul 08	Aug 08	Sep 08	% Target Variation
Central Measure	Execute 90% of PPO/PYO warrants in 7 days	90%	0% (0 / 4)	33% (1 / 3)	100% (7 / 7)	+10%
Central Measure	Execute 70% of Category A warrants in 14 days	75%	40% (2 / 5)	33% (4 / 12)	75% (12 / 16)	+ 0%
Central Measure	Execute 70% of Category B warrants in 21 days	75%	47% (43 / 91)	47% (39 / 83)	46% (39 / 85)	- 29%
Central Measure	Execute 60% of Category C warrants in 28 days	65%	40% (10 / 25)	29% (5 / 17)	46% (17 / 37)	- 19%

Source: Warrant's Monthly (Ops. Support) – September 2008



Source – FTA Court Warrant Report – September 08

Warrants By Police Area

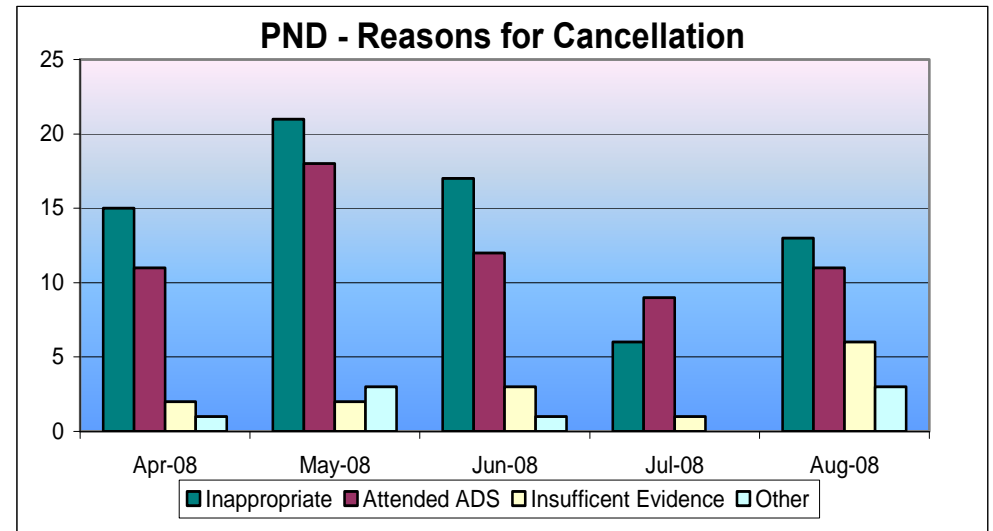
Local Data as at 26 Sep 08	Warrants				PPO/PYO Warrants	
	Outstanding Breach Warrants	Target for FTA Warrants	Outstanding FTA Warrants	% Against Target	PPO / PYO Warrants Currently O/S	% Executed within 7 days since 01/04/2006
Force	71	299	330	- 10%	1	59%
Eastern	25	110	125	- 14%	1	63%
Western	29	77	96	- 25%	0	50%
Central	17	112	109	+ 3%	0	60%

Source: Constabulary Daily Returns and Warrant's Monthly (Ops. Support) – September

Alcohol Diversion Scheme

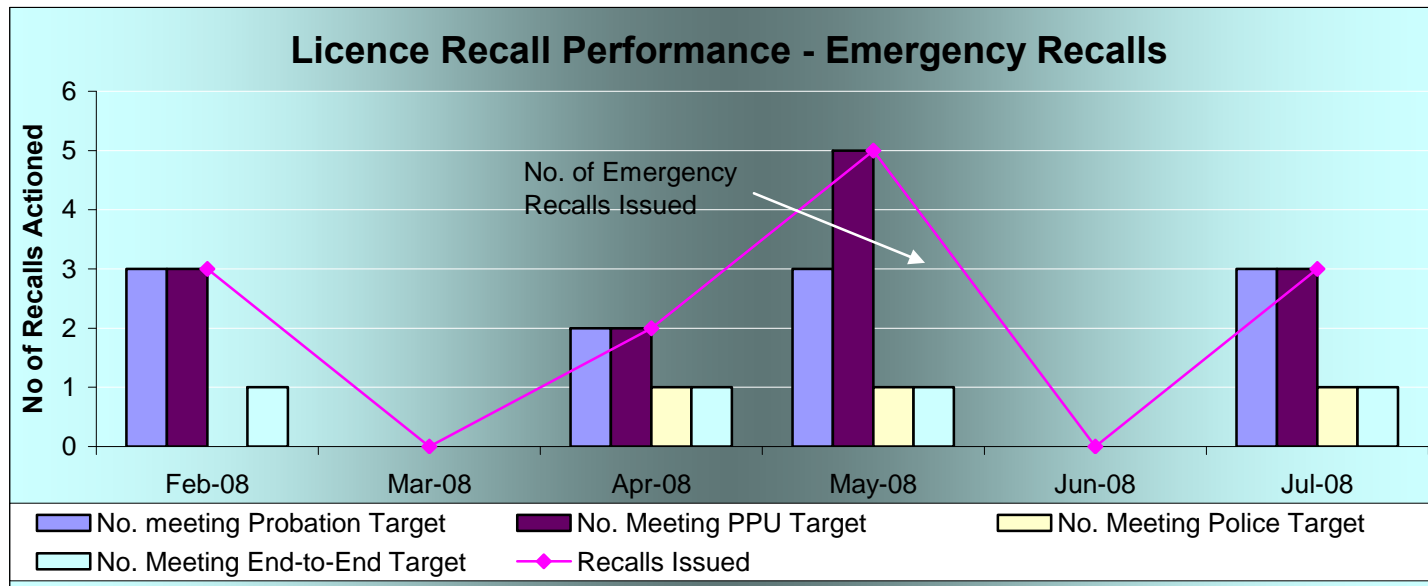
Month	PNDs Issued	Non Herts resident	DD	Section 5	Attended course
October	29	10	13	16	5
November	31	6	12	19	6
December	52	12	20	31	4
January	31	5	11	20	4
February	26	4	15	11	3
March	26	9	13	13	5
April	66	8	42	24	3
May	96	18	27	69	10
June	63	7	27	35	13
July	61	12	25	36	10
August	73	16	18	55	15
September	51	14	21	30	14

PND's – Reasons for Cancellation



Source: CTO August 2008

Licence Recall Data – Jan '08 to Jul '08



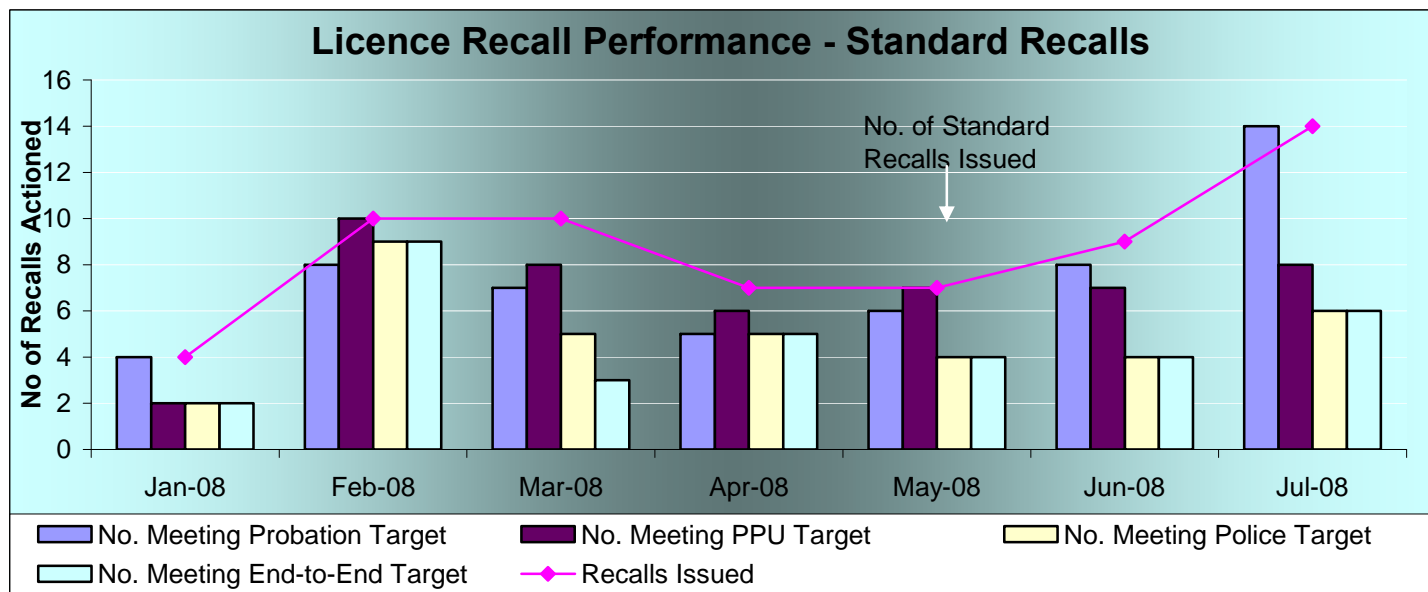
Emergency Recall Targets

Probation: 90% in 24 Hrs.

NOMS PRS: 100% in 2 Hrs.

Police: 80% in 48 Hrs.

End-to-End: 75% in 74 Hrs.



Standard Recall Targets

Probation: 90% in 24 Hrs.

NOMS PRS: 90% in 24 Hrs.

Police: 80% in 96 Hrs.

End-to-End: 80% in 144 Hrs

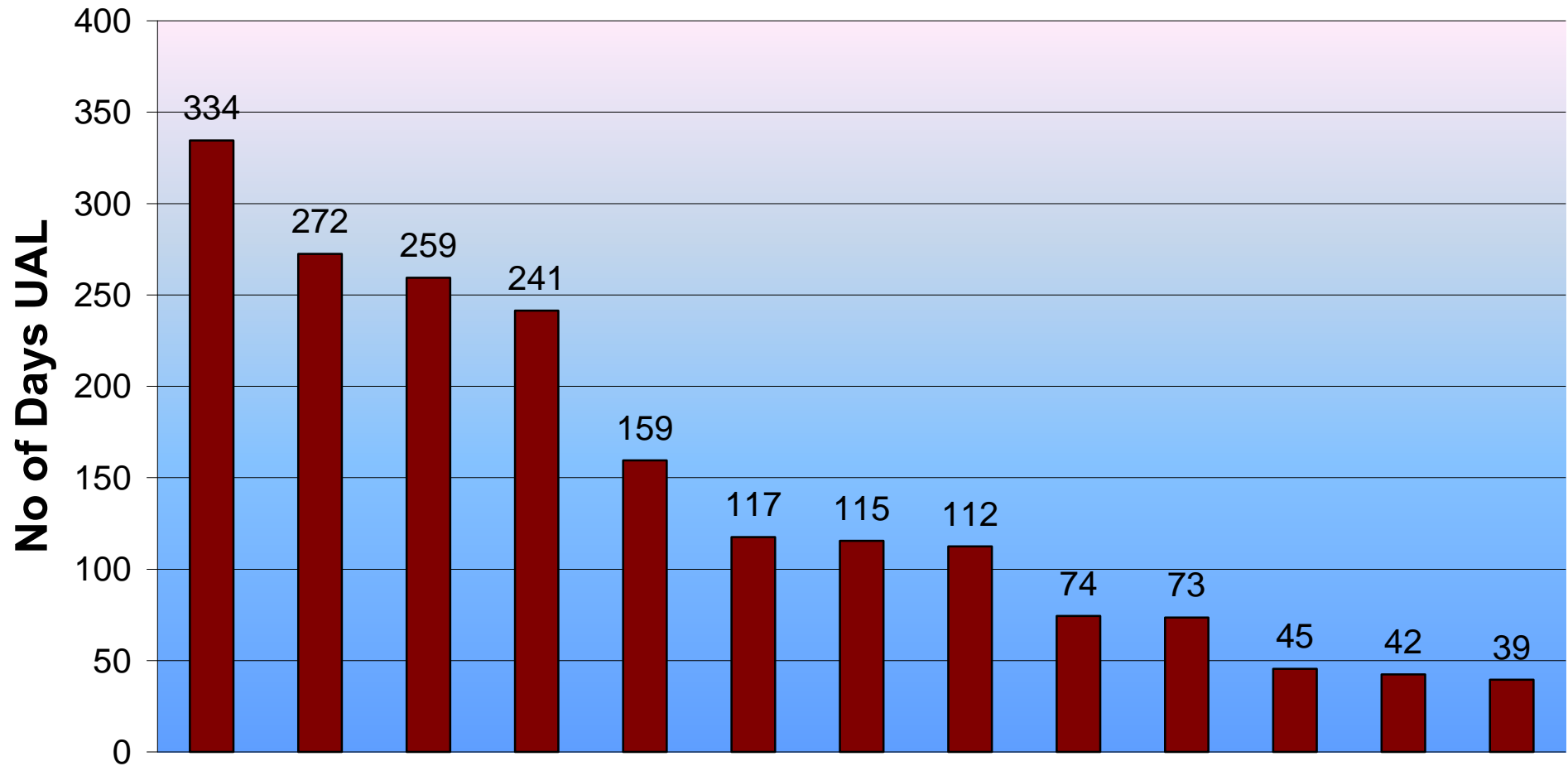
Source: OCJR Returns –Jan '08 to Jul '08

LICENCE RECALL DATA – Rolling 6 Months Feb 08 to Jul 08

LICENCE RECALL Feb 08 - Jul 08	Standard						Standard (Total)			Emergency			Total			Probation & Contractor	Post-release Section	Police
	Home Detention Curfew (HDC) only			excluding Home Detention Curfew (HDC)			No of recalls in period	No of recalls completed within target time	% of recalls completed within target time	No of recalls in period	No of recalls completed within target time	% of recalls completed within target time	No of recalls in period	No of recalls completed within target time	% of recalls completed within target time	% in Target	% in Target	% in Target
	No of recalls in period	No of recalls completed within target time	% of recalls completed within target time	No of recalls in period	No of recalls completed within target time	% of recalls completed within target time												
England & Wales	841	449	53%	4,335	2,727	63%	5,176	3,176	61%	1,471	919	62%	6,647	4,095	62%	83%	86%	60%
Avon & Somerset	21	9	43%	107	60	56%	128	69	54%	33	22	67%	161	91	57%	93%	93%	51%
Bedfordshire	10	6	60%	46	27	59%	56	33	59%	12	4	33%	68	37	54%	97%	93%	50%
Cambridgeshire	11	6	55%	39	23	59%	50	29	58%	16	9	56%	66	38	58%	88%	91%	58%
Cheshire	12	7	58%	75	55	73%	87	62	71%	7	6	86%	94	68	72%	91%	80%	67%
Cleveland	18	14	78%	76	60	79%	94	74	79%	33	25	76%	127	99	78%	96%	91%	75%
Cumbria	7	5	71%	37	35	95%	44	40	91%	22	17	77%	66	57	86%	94%	89%	88%
Derbyshire	19	16	84%	51	42	82%	70	58	83%	43	31	72%	113	89	79%	94%	96%	78%
Devon & Cornwall	3	1	33%	81	52	64%	84	53	63%	26	14	54%	110	67	61%	77%	87%	61%
Dorset	6	2	33%	61	33	54%	67	35	52%	12	8	67%	79	43	54%	86%	89%	53%
Durham	18	11	61%	28	24	86%	46	35	76%	6	3	50%	52	38	73%	90%	85%	73%
Dyfed Powys	2	2	100%	16	10	63%	18	12	67%	6	5	83%	24	17	71%	92%	100%	67%
Essex	19	14	74%	67	46	69%	86	60	70%	28	18	64%	114	78	68%	87%	93%	61%
Gloucestershire	10	4	40%	46	25	54%	56	29	52%	14	7	50%	70	36	51%	83%	87%	57%
Greater Manchester	45	23	51%	301	187	62%	346	210	61%	149	78	52%	495	288	58%	93%	87%	56%
Gwent	12	7	58%	43	24	56%	55	31	56%	12	9	75%	67	40	60%	96%	85%	55%
Hampshire	20	11	55%	129	71	55%	149	82	55%	19	17	89%	168	99	59%	83%	85%	56%
Hertfordshire	5	3	60%	52	27	52%	57	30	53%	13	5	38%	70	35	50%	84%	84%	53%
Humberside	19	9	47%	114	84	74%	133	93	70%	30	19	63%	163	112	69%	98%	90%	69%
Kent	19	12	63%	79	53	67%	98	65	66%	37	25	68%	135	90	67%	92%	84%	64%
Lancashire	25	11	44%	132	98	74%	157	109	69%	22	17	77%	179	126	70%	94%	83%	73%
Leicestershire	20	11	55%	75	53	71%	95	64	67%	25	14	56%	120	78	65%	83%	94%	62%
Lincolnshire	12	6	50%	36	21	58%	48	27	56%	18	11	61%	66	38	58%	95%	92%	55%
London	120	64	53%	737	403	55%	857	467	54%	171	93	54%	1028	560	54%	60%	87%	61%
Merseyside	38	20	53%	191	116	61%	229	136	59%	26	16	62%	255	152	60%	82%	88%	58%
Norfolk	14	10	71%	37	27	73%	51	37	73%	23	15	65%	74	52	70%	93%	92%	66%
North Wales	3	2	67%	42	27	64%	45	29	64%	16	11	69%	61	40	66%	80%	95%	59%
North Yorkshire	4	3	75%	40	30	75%	44	33	75%	23	18	78%	67	51	76%	97%	90%	75%
Northamptonshire	18	12	67%	33	12	36%	51	24	47%	35	22	63%	86	46	53%	86%	95%	46%
Northumbria	27	12	44%	103	76	74%	130	88	68%	52	36	69%	182	124	68%	89%	87%	64%
Nottinghamshire	31	14	45%	145	74	51%	176	88	50%	43	32	74%	219	120	55%	89%	89%	54%
South Wales	25	10	40%	167	101	60%	192	111	58%	38	22	58%	230	133	58%	82%	88%	57%
South Yorkshire	39	26	67%	167	119	71%	206	145	70%	41	22	54%	247	167	68%	88%	92%	64%
Staffordshire	15	10	67%	68	46	68%	83	56	67%	50	38	76%	133	94	71%	91%	94%	66%
Suffolk	4	0	0%	49	39	80%	53	39	74%	15	9	60%	68	48	71%	78%	84%	69%
Surrey	7	6	86%	35	25	71%	42	31	74%	7	7	100%	49	38	78%	94%	92%	75%
Sussex	8	5	63%	81	45	56%	89	50	56%	26	14	54%	115	64	56%	88%	90%	54%
Thames Valley	26	14	54%	93	57	61%	119	71	60%	90	46	51%	209	117	56%	88%	96%	52%
Warwickshire	6	4	67%	16	12	75%	22	16	73%	26	14	54%	48	30	63%	88%	96%	61%
West Mercia	5	2	40%	59	39	66%	64	41	64%	16	9	56%	80	50	63%	82%	80%	60%
West Midlands	57	21	37%	319	195	61%	376	216	57%	124	84	68%	500	300	60%	81%	85%	57%
West Yorkshire	56	20	36%	244	162	66%	300	182	61%	62	43	69%	362	225	62%	93%	92%	60%
Wiltshire	6	4	67%	20	16	80%	26	20	77%	7	6	86%	33	26	79%	94%	85%	79%

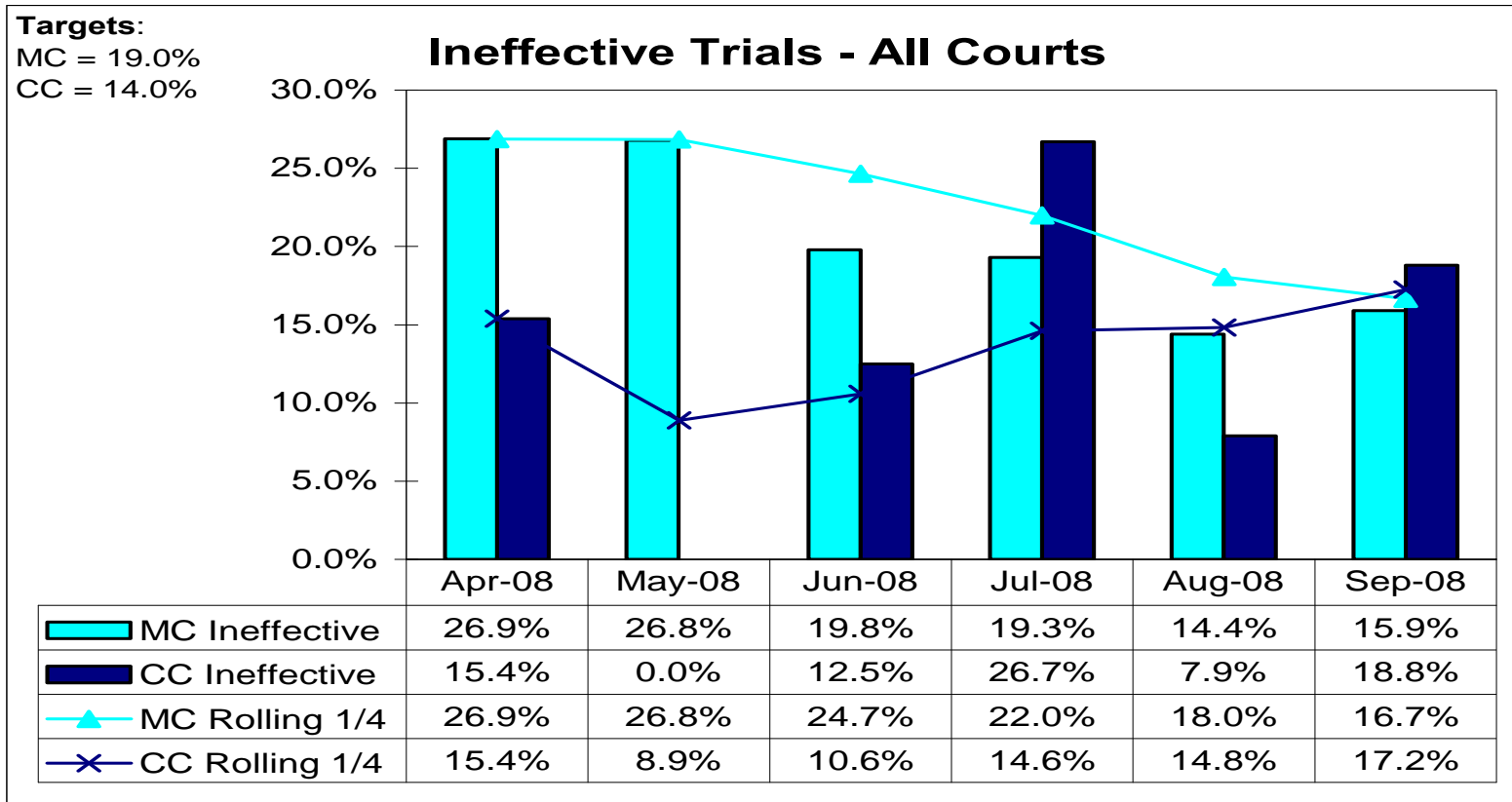
Source: CJ-MIS Enforcement Dashboard – October 2008

Unlawfully at Large - Oct 2008



Source: Police RLO – 24 Oct 2008

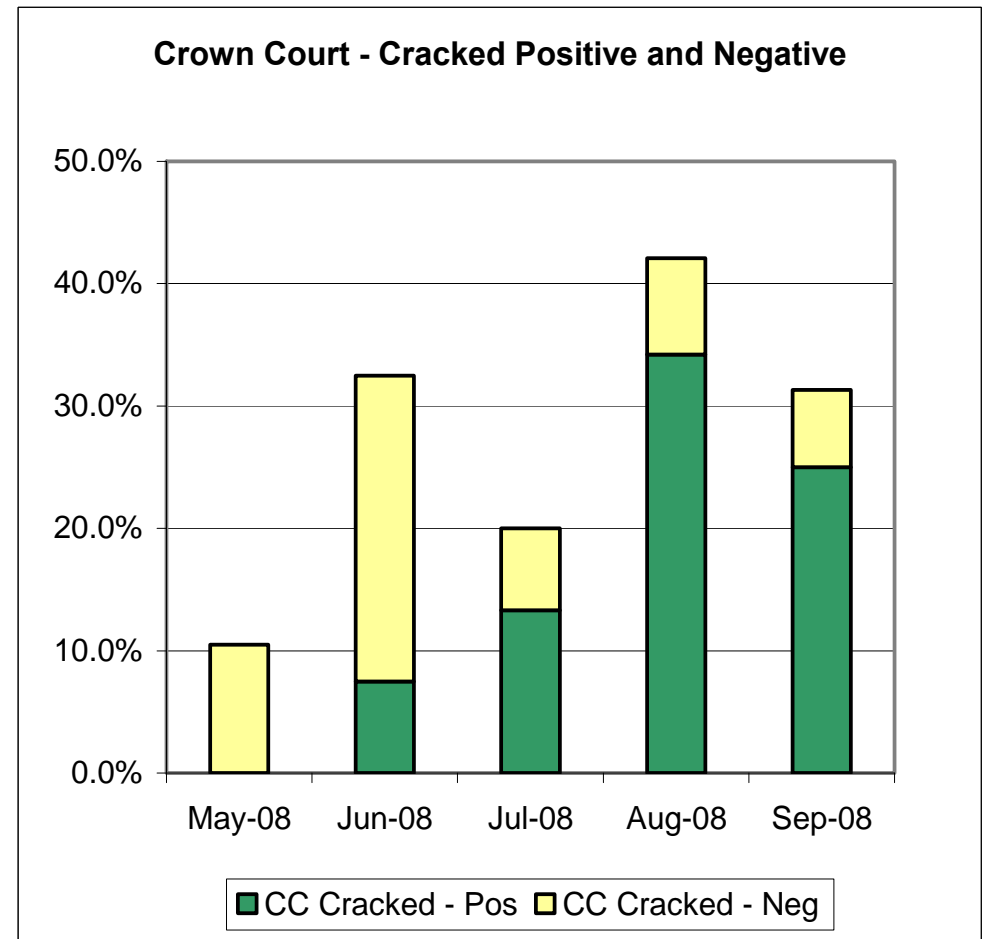
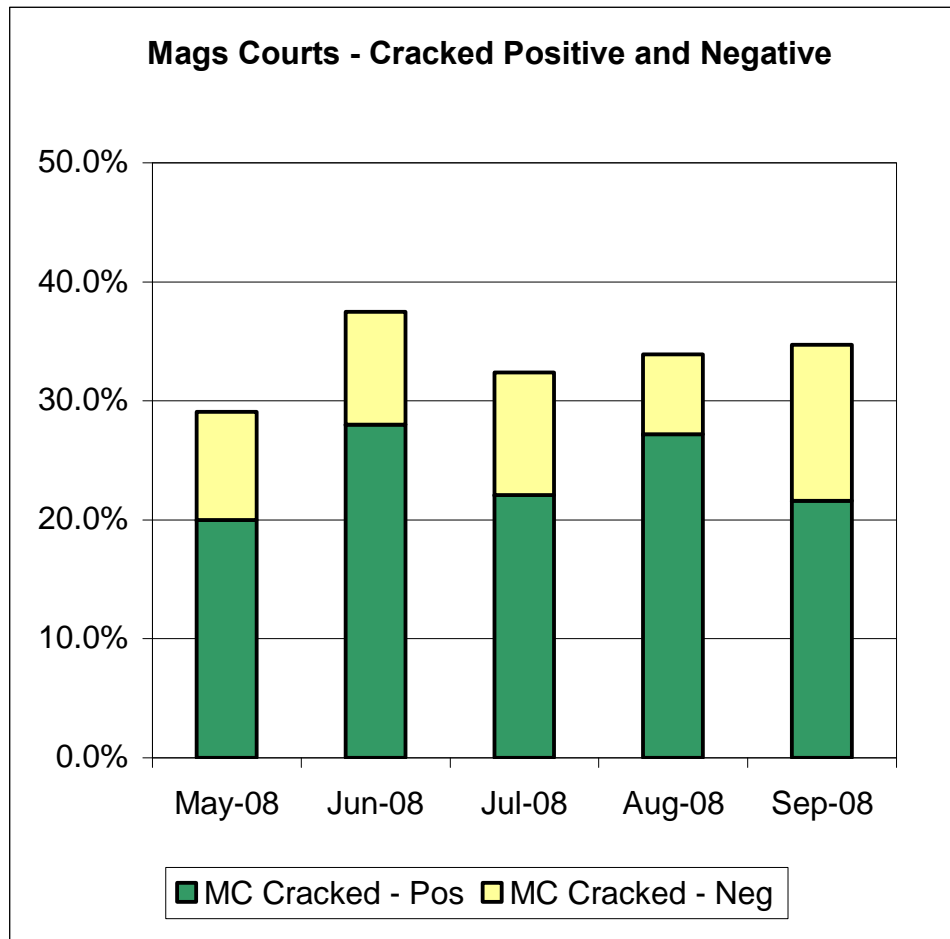
TRIAL EFFECTIVENESS – INEFFECTIVE TRIALS



MC Total Listings	454	362	368	348	298	320
MC Total Ineffective	122	97	73	67	43	51
CC Total Listings	26	19	40	30	38	48
CC Total Ineffective	4	0	5	8	3	9

Source: Court Returns – September 2008

TRIAL EFFECTIVENESS – CRACKED TRIALS



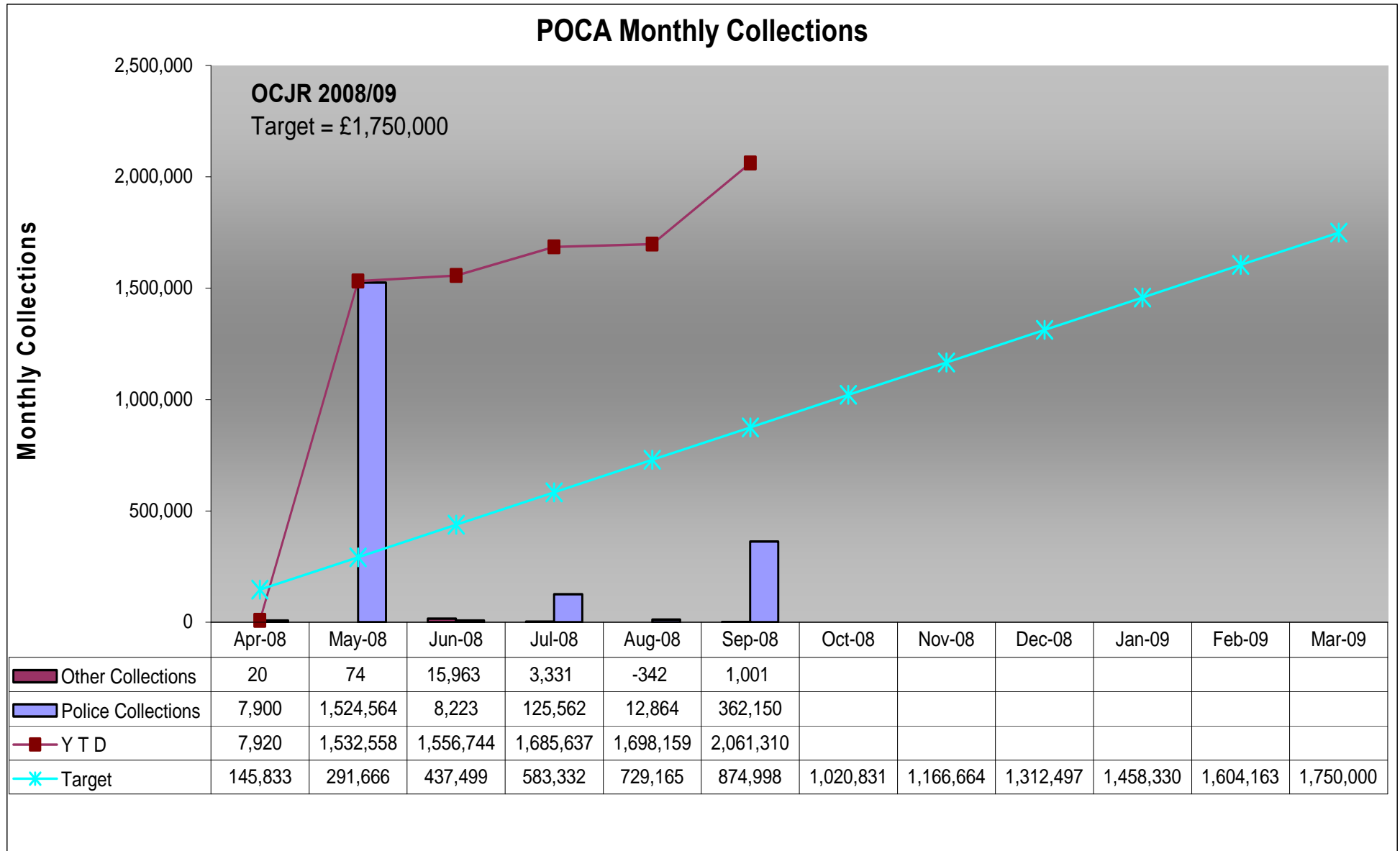
Source: Court Returns – September 2008

NOTE:

A “Positive” cracked trial is mainly due to the defendant offering an acceptable but late Guilty Plea

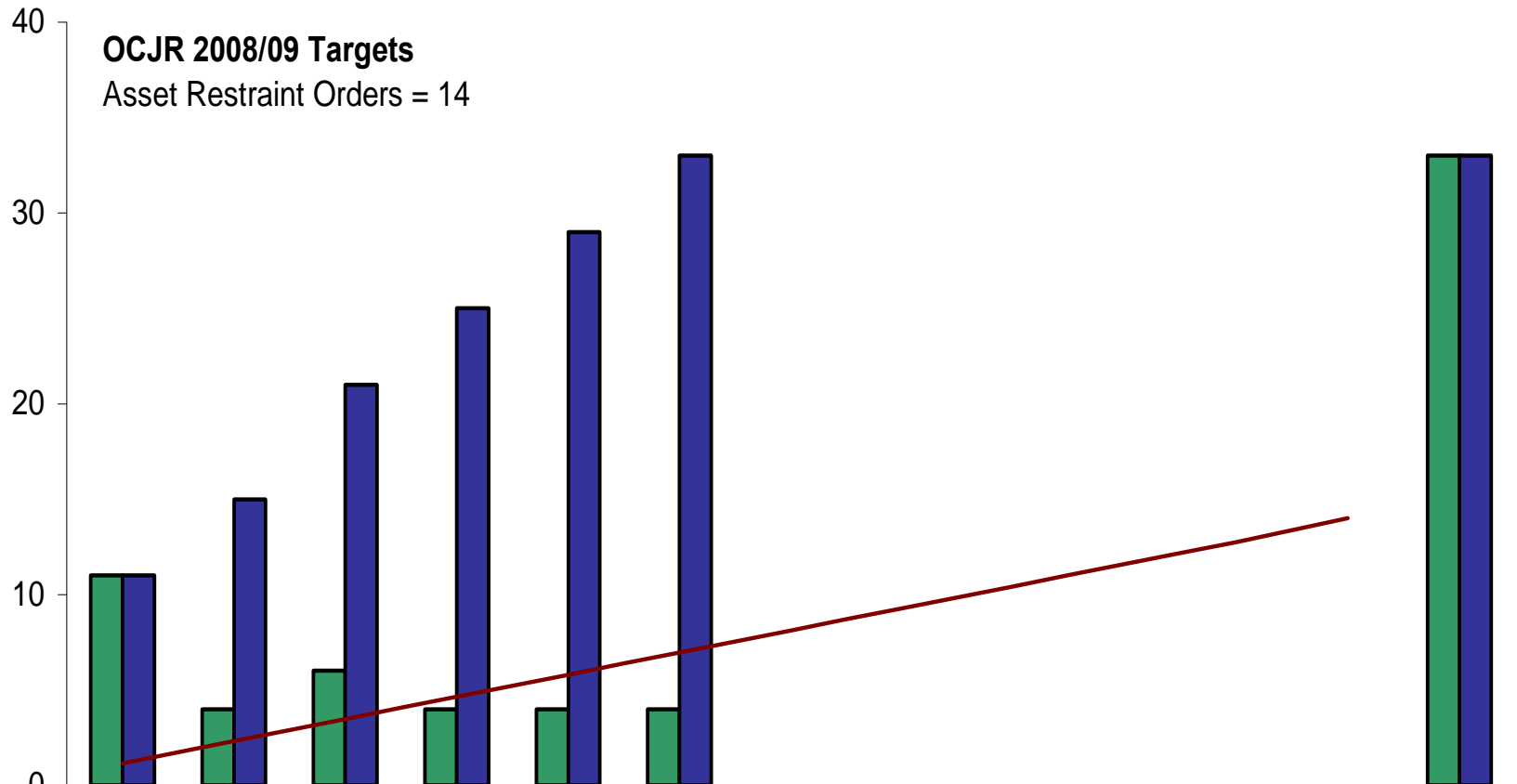
A “Negative” cracked trial is mainly due to the prosecution being unable to proceed, generally due to witness absence

POCA Summary Charts



Enforcement Performance Report (MoJ) –September 2008

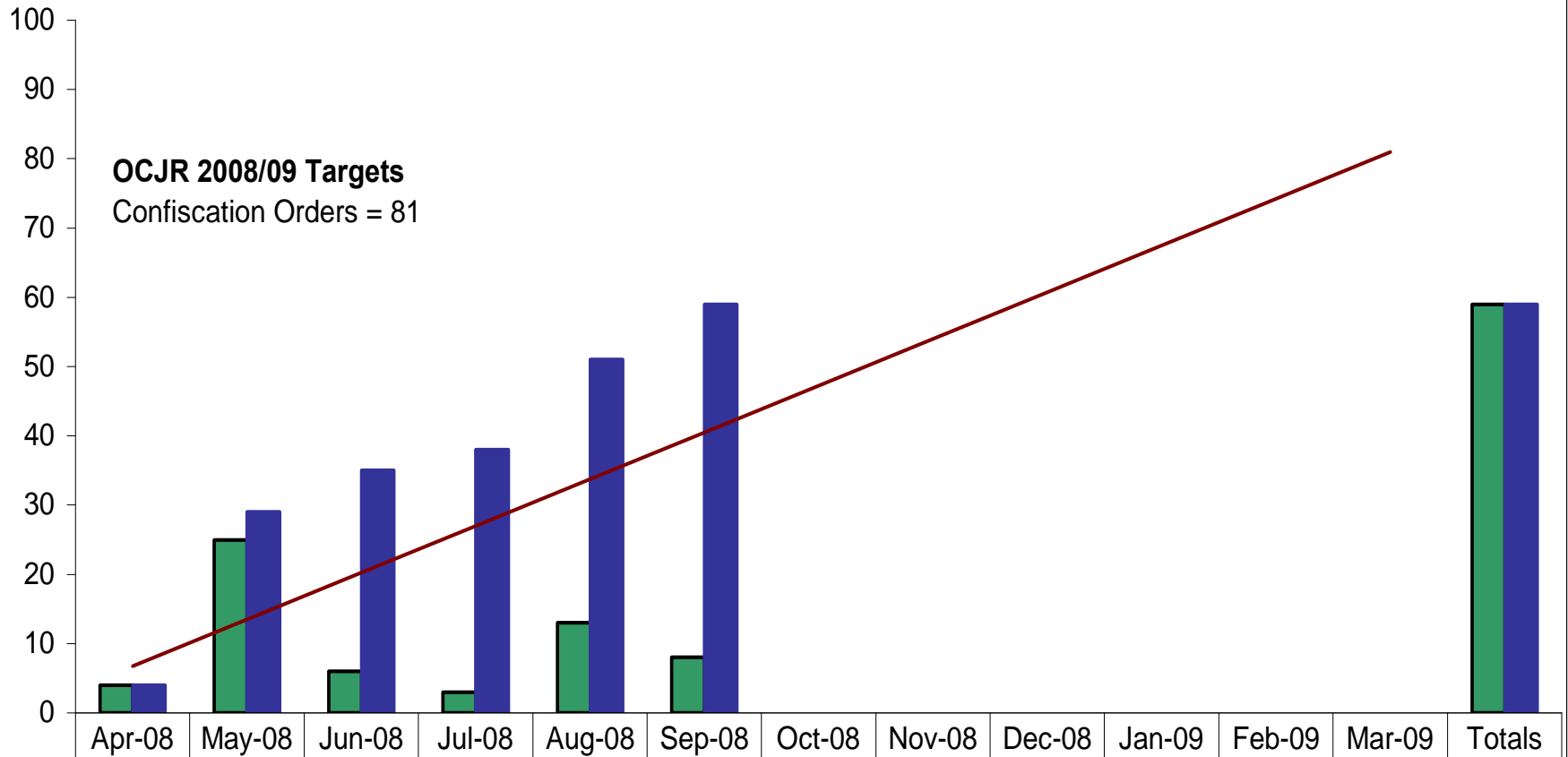
OCJR - Number of Asset Restraint Orders



	Apr-08	May-08	Jun-08	Jul-08	Aug-08	Sep-08	Oct-08	Nov-08	Dec-08	Jan-09	Feb-09	Mar-09	Totals
Restraint Orders	11	4	6	4	4	4							33
YTD	11	15	21	25	29	33							33
OCJR Target	1.2	2.3	3.5	4.6	5.8	7.0	8.1	9.3	10.4	11.6	12.8	14.0	

Source: FIU Spreadsheet – September 2008

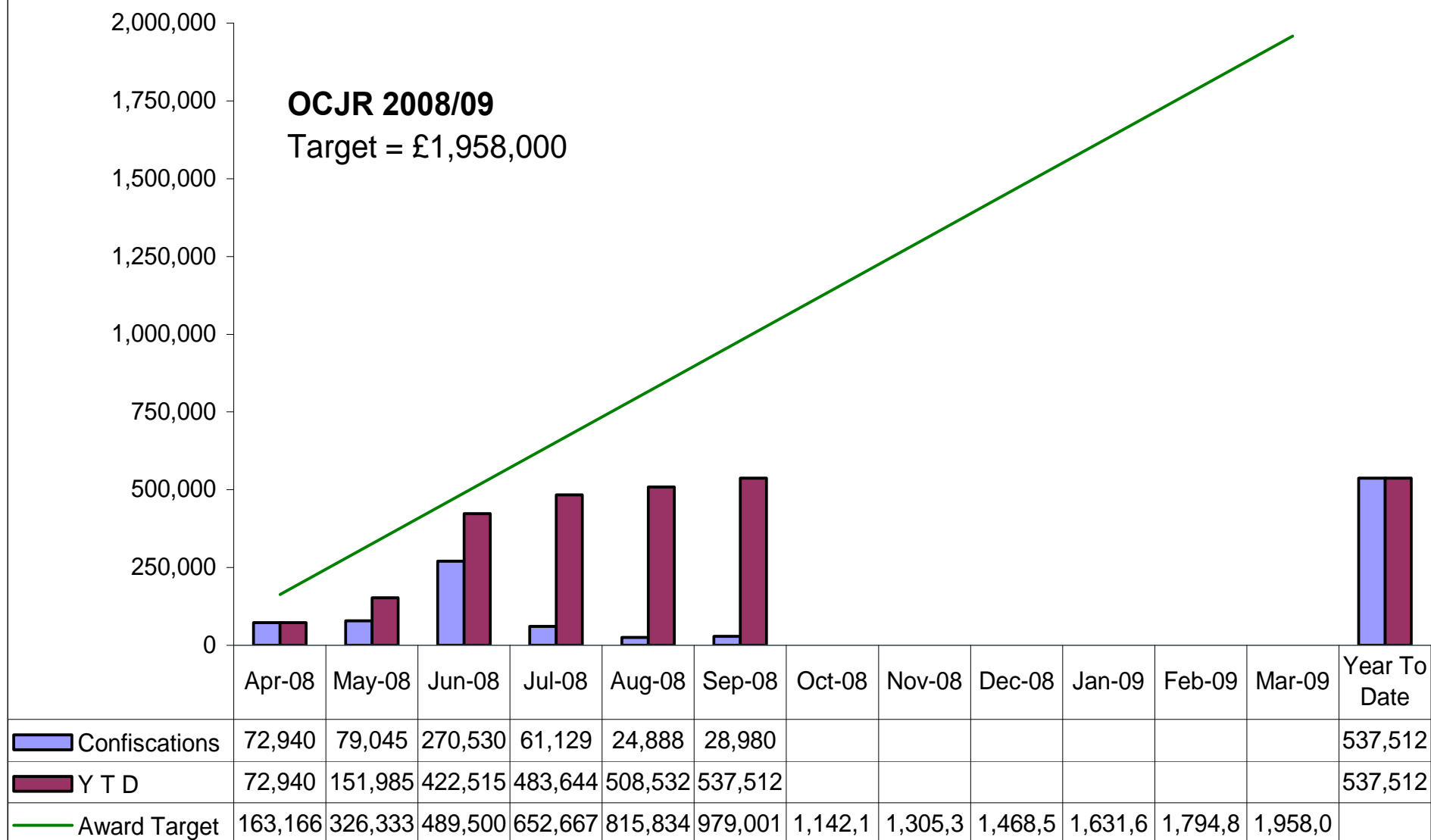
OCJR - Number of Confiscation Orders



█ Confiscations	4	25	6	3	13	8							59
█ YTD	4	29	35	38	51	59							59
— Target	6.75	13.50	20.25	27.00	33.75	40.50	47.25	54.00	60.75	67.50	74.25	81.00	

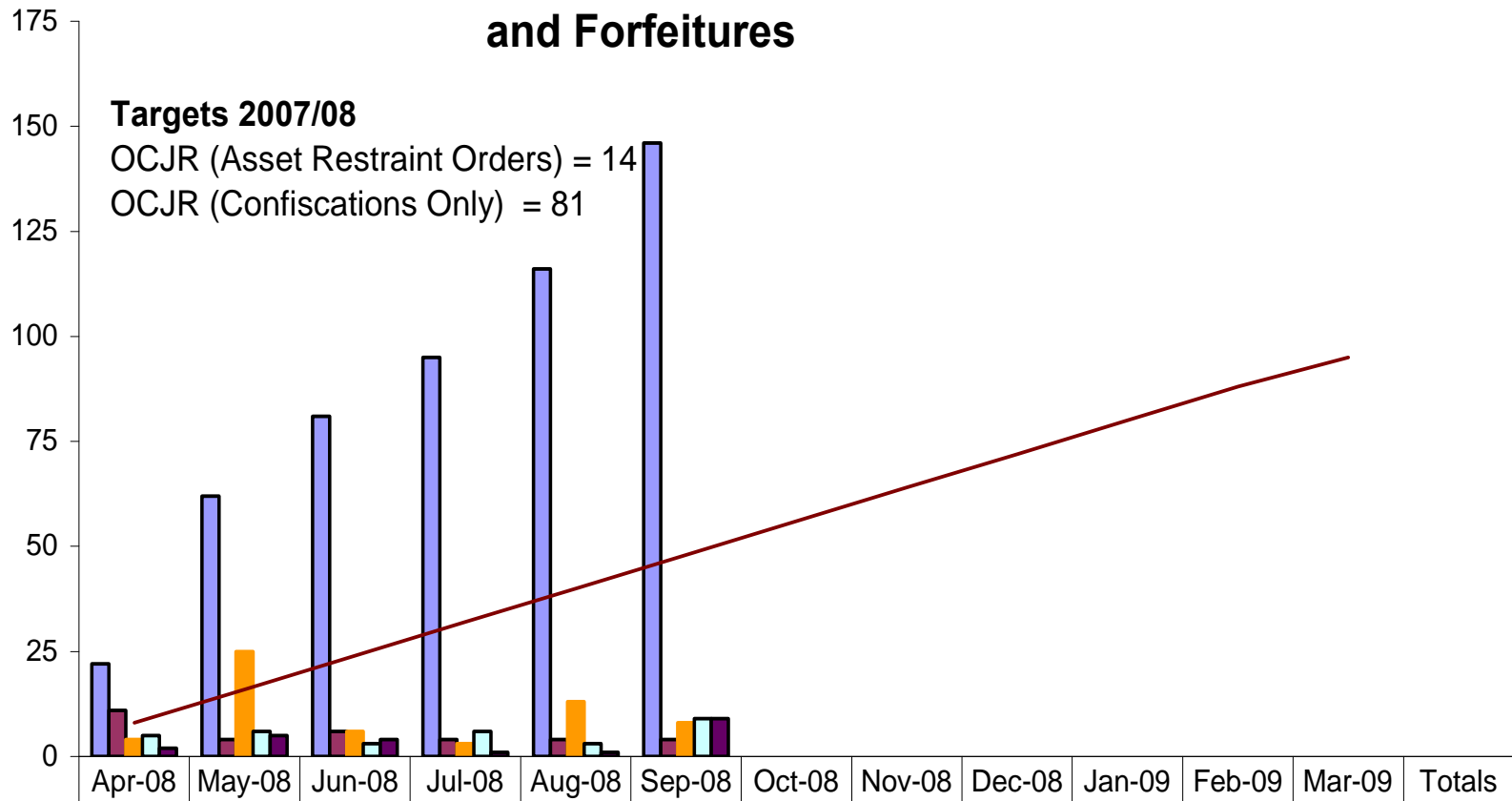
Source: FIU Spreadsheet – September 2008

OCJR - Value of Confiscation Orders



Source: FIU Spreadsheet –September 2008

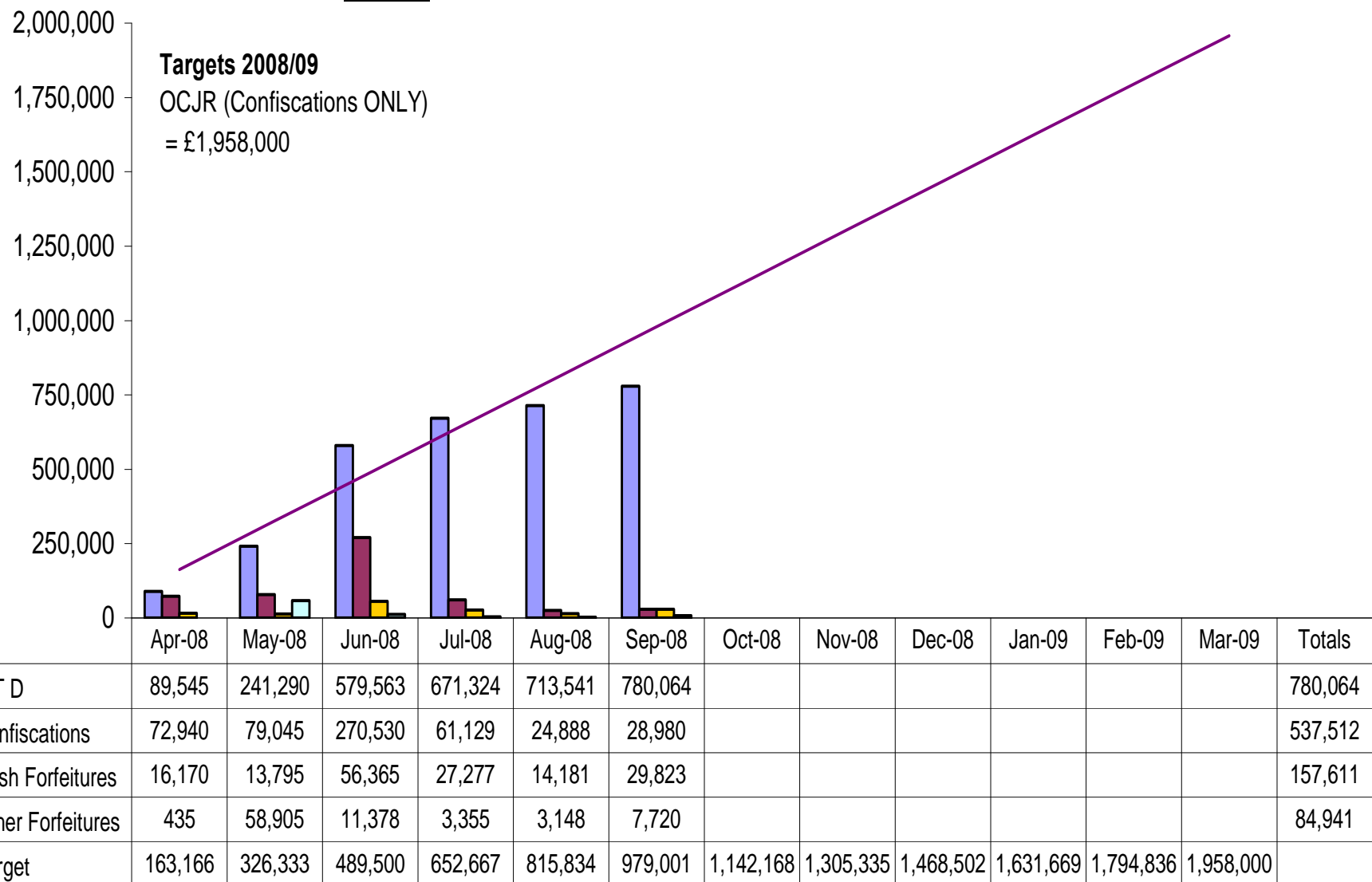
Number of Restraint Orders, Confiscation, and Forfeitures



	Apr-08	May-08	Jun-08	Jul-08	Aug-08	Sep-08	Oct-08	Nov-08	Dec-08	Jan-09	Feb-09	Mar-09	Totals
█ Year To Date	22	62	81	95	116	146							146
█ Restraint Orders	11	4	6	4	4	4							33
█ Confiscations	4	25	6	3	13	8							59
█ Cash Forfeitures	5	6	3	6	3	9							32
█ Other Forfeitures	2	5	4	1	1	9							22
— Target	8	16	24	32	40	48	56	64	72	80	88	95	

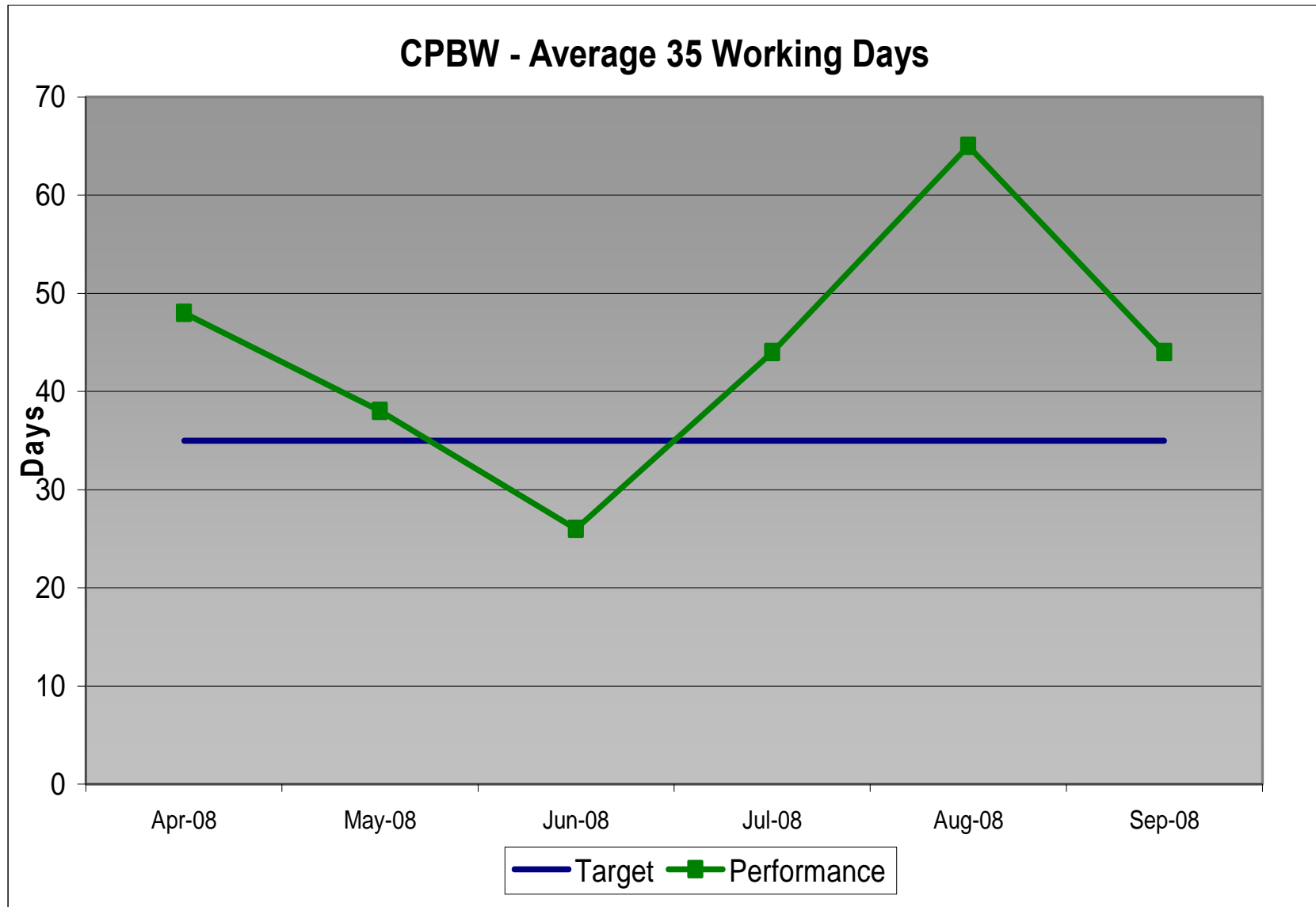
Source: FIU Spreadsheet – September 2008

Value of Confiscation Orders and Forfeitures



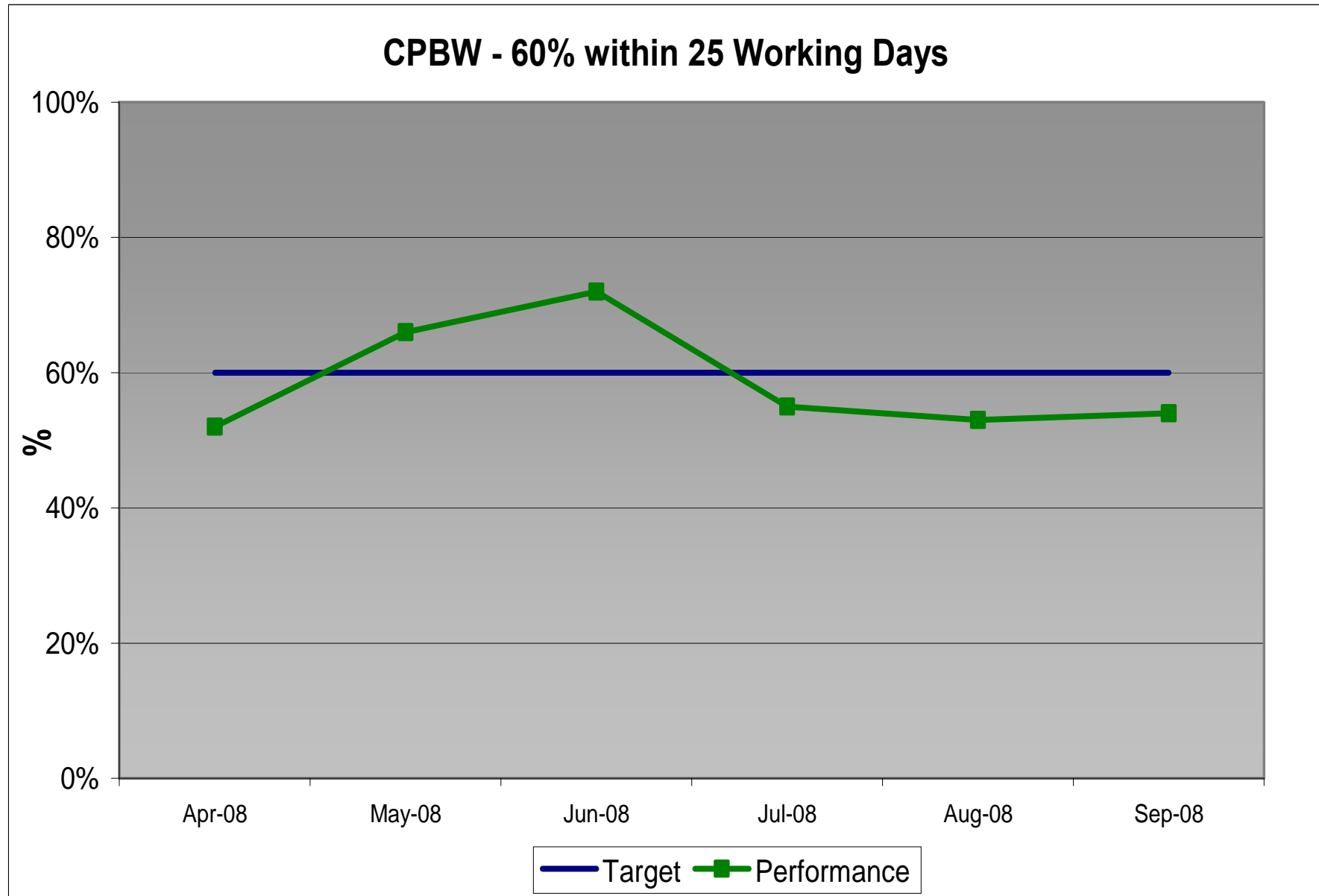
Source: FIU Spreadsheet – September 2008

Community Penalty Enforcements



Source: HMCS – Comet MI – September 2008

Community Penalty Enforcements



Source: HMCS – Comet MI – September 2008

Public Confidence – BCS data to Year Ending Mar '08

% Of Very or Fairly Confident	Objective	Baseline Y/E Mar 03	Y/E Mar 07	Y/E Jun 07	Y/E Sep 07	Y/E Dec 07	Y/E Mar 08	Region Average	National Average
Victims & Witness Satisfaction	Meet the needs of Victims	32.5	37.3	37.3	37.8	38.4	37.6	37.6	36.0
	Meet the needs of Witnesses Baseline Y/E March 04 (Target 70%)	64.3	72.7	73.1	71.9	73.3	72.1	71.7	68.5
Community Engagement	Respect the rights of those accused of crime	77.0	81.7	80.4	80.3	81.0	78.6	81.6	79.7
	Effective in dealing with young people accused of crime	23.3	25.7	24.1	24.1	25.1	24.8	24.8	24.7
Increasing Public Confidence in Bringing Offenders to Justice	Effective in reducing crime	35.2	36.9	37.2	37.3	37.3	38.2	39.6	38.1
	Effective in bringing offenders to justice (Target 48%)	45.7	44.6	45.0	44.6	47.3	47.3	46.9	44.3
	Deal with cases promptly and efficiently	38.8	40.5	42.0	41.1	41.7	42.1	44.5	42.3

Source: CJS/Gov Quarterly Confidence Report

Red	Significantly off target (5%>pts)
Amber	Just off target (5% =<pts)
Green	On or exceeding target

- All 7 of our measures are above our March '03 Baseline.
- On the key measure of 'Effective in Bringing Offenders to Justice' the Mar '08 figure shows that this has remained steady at 47.3 and places Herts 6th. In the national table.
- 4 of the 7 measures show a decrease on the previous quarters' figures, and 1 is equal.
- 5 of our 7 measures are above the National Average, and 2 below.
- 2 of our 7 measures are above the Region average, with 2 equal and 3 below.

Effectiveness measures
(percentage very / fairly confident)

	Oct 07 - Mar 08 (PSA24 baseline)	+/- 95% confidence intervals	Direction want measure to go
Police are effective at catching criminals	53.1	1.2	↑
CPS is effective at prosecuting people accused of committing a crime	46.0	1.2	↑
Courts are effective at dealing with cases promptly	39.3	1.2	↑
Courts are effective at giving punishments which fit the crime	22.4	1.0	↑
Prisons are effective at punishing offenders who have been convicted of a crime	30.1	1.1	↑
Prisons are effective at rehabilitating offenders who have been convicted of a crime	19.1	1.0	↑
Probation service is effective at preventing criminals from re-offending	20.4	1.0	↑
Criminal Justice System as a whole is effective	36.9	1.1	↑

Fairness measures
(percentage strongly / tend to agree)²

	Oct 07 - Mar 08 (PSA24 baseline)	+/- 95% confidence intervals	Direction want measure to go
CJS gives witnesses and victims the support they need	48.9	1.3	↑
CJS treats those who have been accused of a crime as 'innocent until proven guilty'	77.8	1.0	↑
CJS takes into account the views of victims and witnesses	68.3	1.2	↑
CJS takes into account the circumstances surrounding the crime when handing out sentences	63.0	1.2	↑
CJS is too soft on those accused of committing a crime	79.4	1.0	↓
CJS achieves the correct balance between the rights of the offender and rights of the victim	33.1	1.2	↑
CJS discriminates against particular groups or individuals	35.8	1.2	↓
Criminal Justice System as a whole is fair	55.9	1.2	↑