



HERTFORDSHIRE CRIMINAL JUSTICE BOARD

PERFORMANCE REPORT

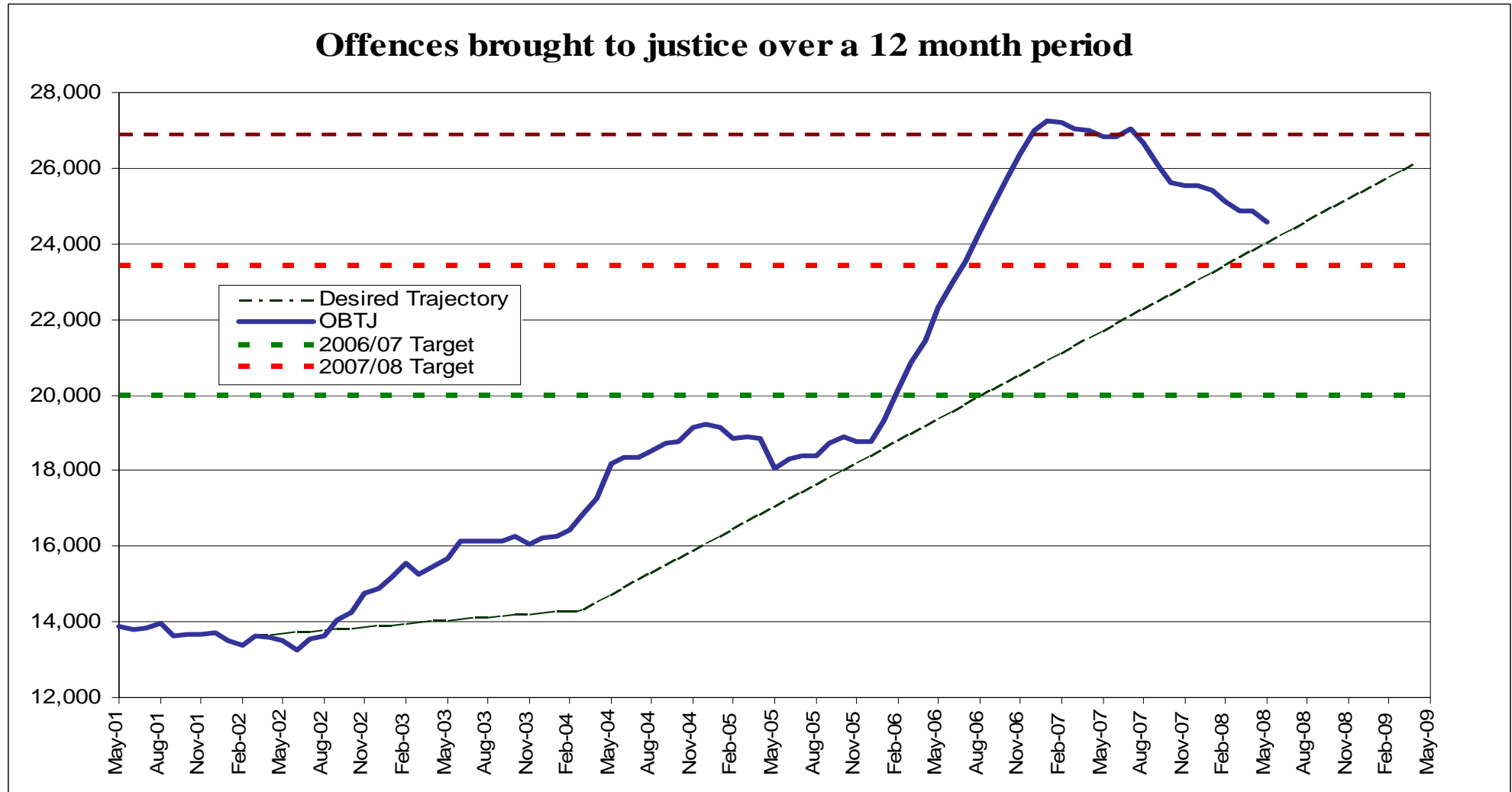
July 2008

Prepared By:
Glen Price,
Performance Officer
Hertfordshire Criminal Justice Board

Circulation:- Board Members; Area Delivery Groups and Performance Advisor (OCJR).

Report Key: **Red** - Significantly off target (5%>pts) **Amber** - Just off target (5% =<pts) **Green** - On or exceeding target

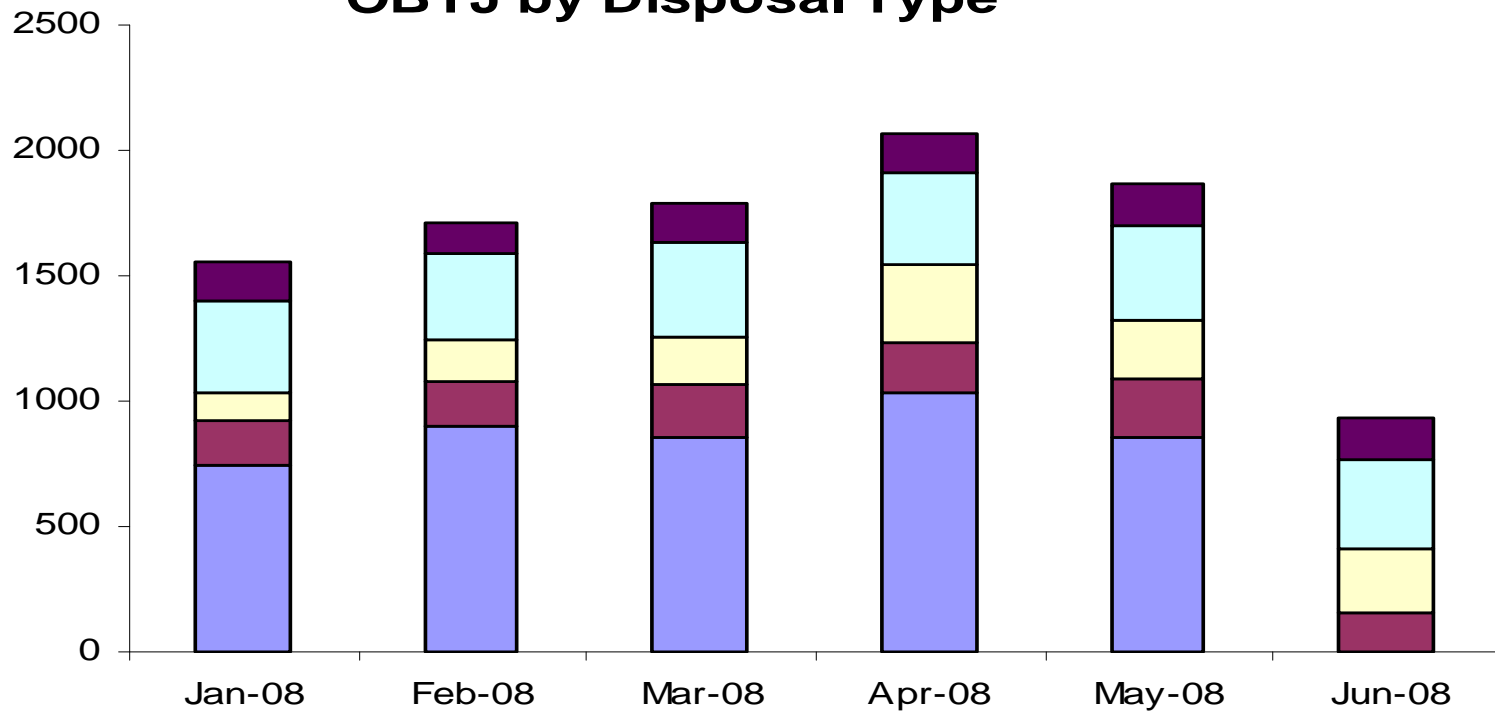
NTJG - 12 Month Rolling OBTJ to May 2008



Hertfordshire Baseline (2001/02)	Target 2008/09	Actual to latest month	Performance vs. baseline	Performance vs. target
13,617	26,737	24,556 (May 2008)	+ 80.3 %	- 8.2 %

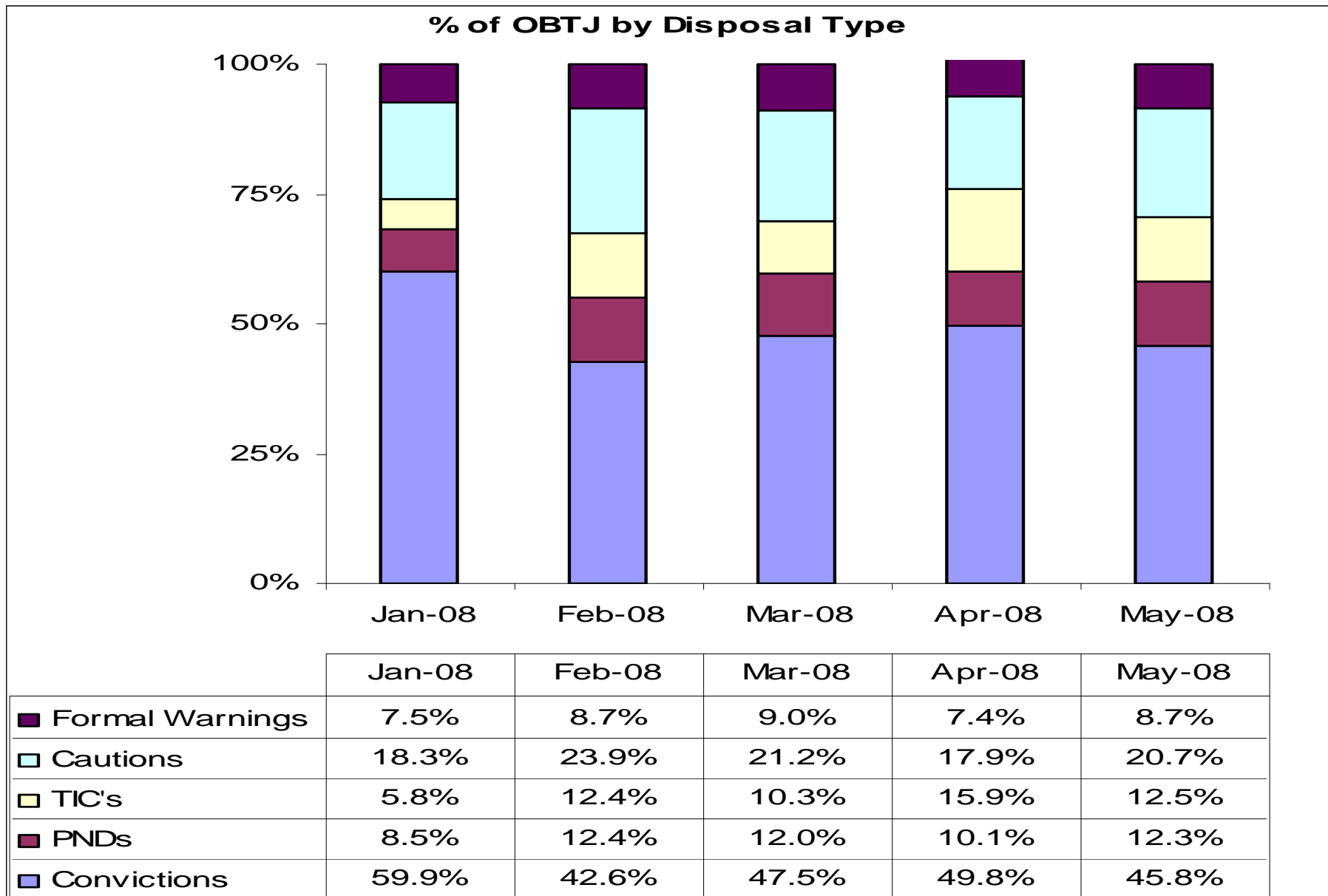
Note: The new 2008/09 target.

OBTJ by Disposal Type



	Jan-08	Feb-08	Mar-08	Apr-08	May-08	Jun-08
Total OBTJ	1551	1708	1793	2067	1865	
Formal Warnings	150	123	162	153	162	158
Cautions	366	336	380	369	386	358
TIC's	116	174	184	308	233	254
PNDs	170	174	216	207	229	160
Convictions	749	901	851	1030	855	

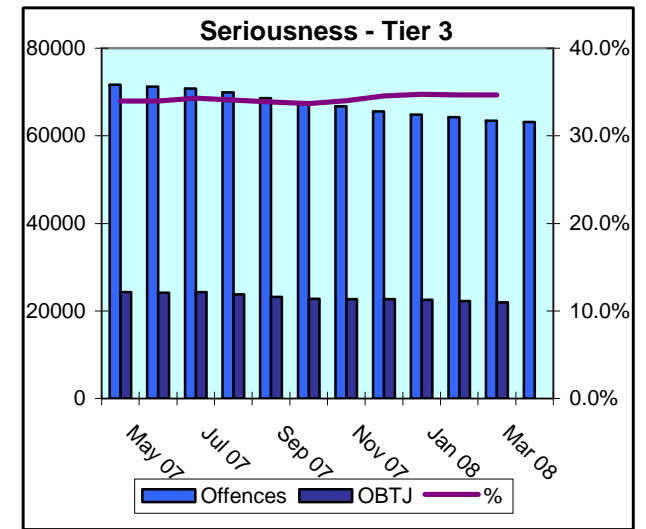
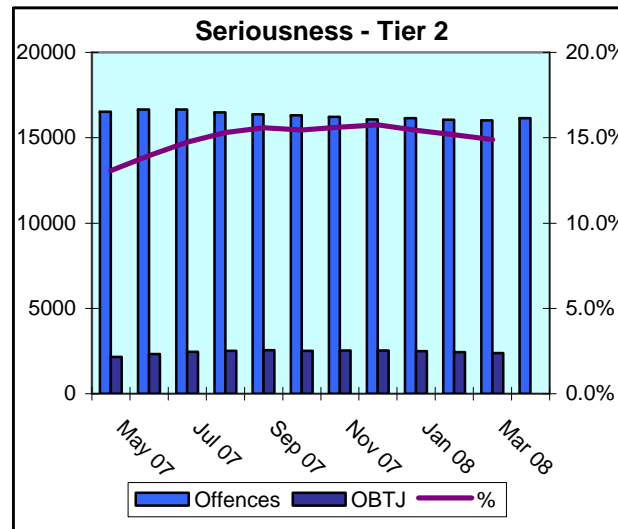
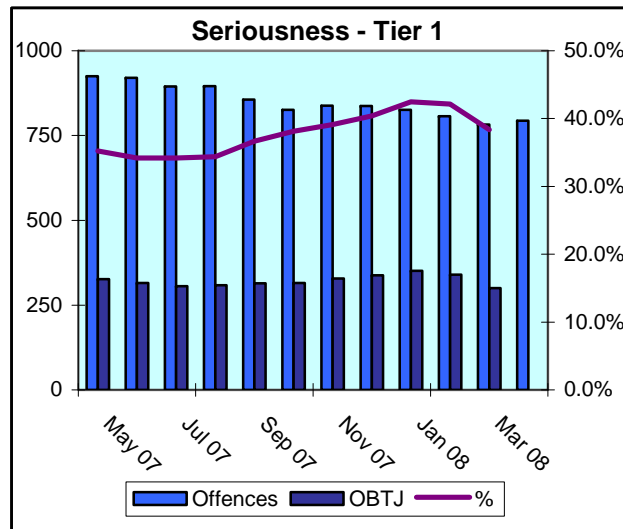
Source: MIS (BTJ Data – June)



Source: MIS (BTJ Data – June)

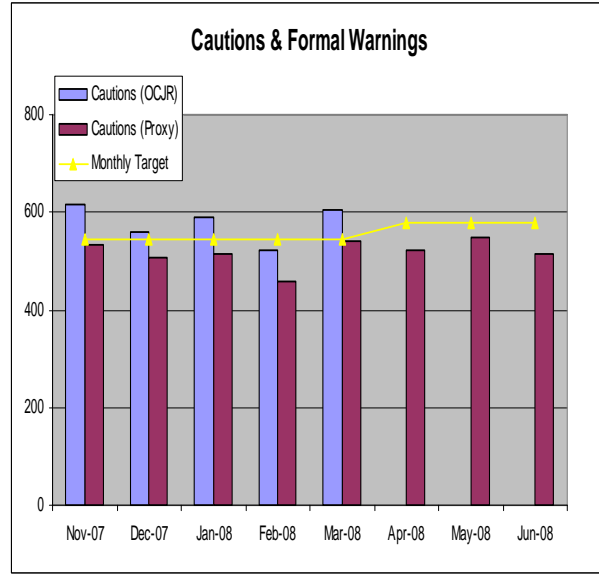
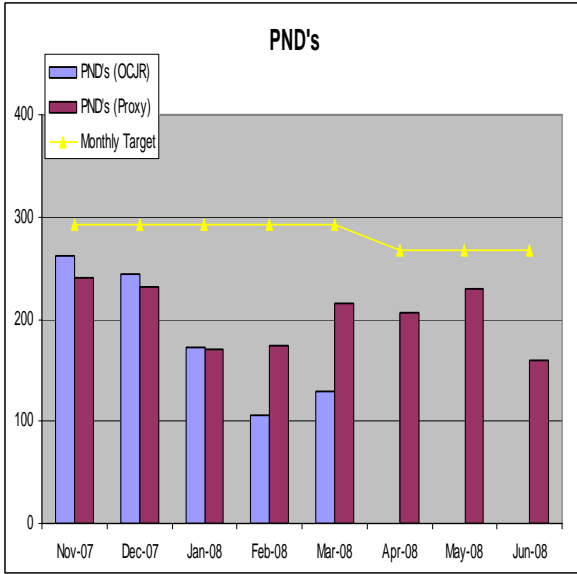
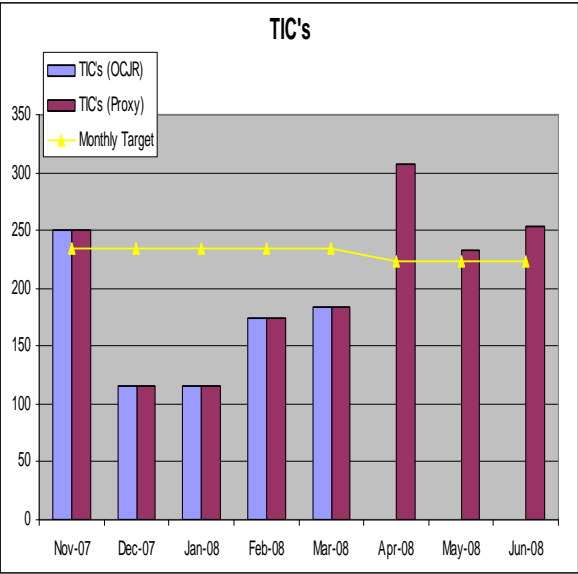
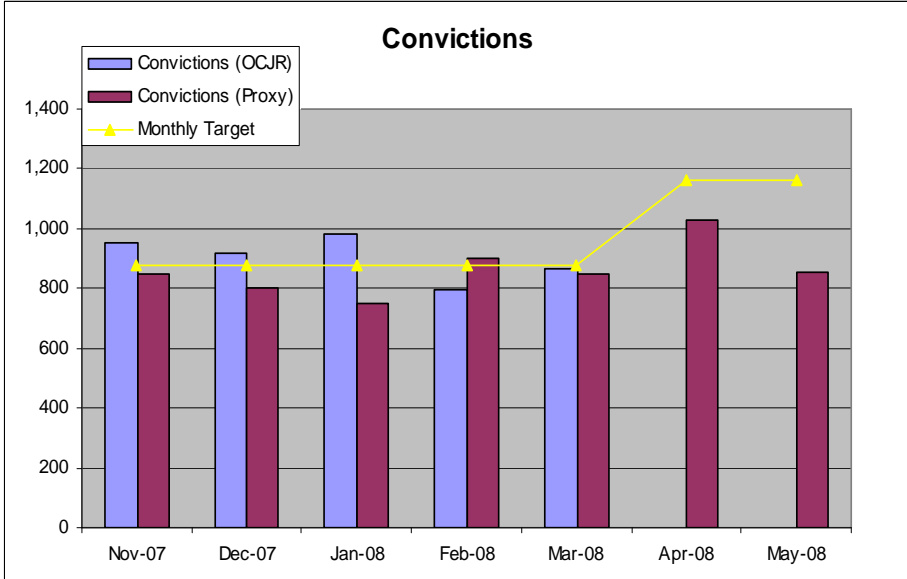
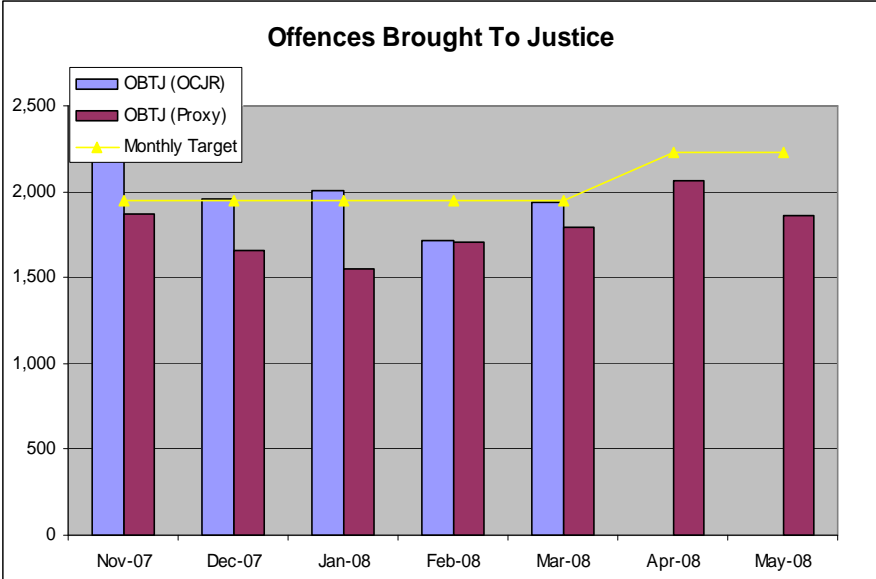
Hertfordshire OBTJ Rate by Seriousness

Tier 1				Tier 2				Tier 3			
Month	Offences	OBTJ	%	Month	Offences	OBTJ	%	Month	Offences	OBTJ	%
May 07	925	326	35.2%	May 07	16527	2159	13.1%	May 07	71628	24333	34.0%
Jun 07	921	315	34.2%	Jun 07	16663	2325	14.0%	Jun 07	71204	24178	34.0%
Jul 07	895	306	34.2%	Jul 07	16662	2455	14.7%	Jul 07	70777	24283	34.3%
Aug 07	896	308	34.4%	Aug 07	16483	2522	15.3%	Aug 07	69879	23820	34.1%
Sep 07	856	314	36.7%	Sep 07	16377	2554	15.6%	Sep 07	68601	23222	33.9%
Oct 07	826	315	38.1%	Oct 07	16314	2522	15.5%	Oct 07	67635	22763	33.7%
Nov 07	838	328	39.1%	Nov 07	16226	2535	15.6%	Nov 07	66760	22698	34.0%
Dec 07	837	338	40.4%	Dec 07	16071	2531	15.7%	Dec 07	65609	22658	34.5%
Jan 08	826	351	42.5%	Jan 08	16153	2493	15.4%	Jan 08	64884	22545	34.7%
Feb 08	807	340	42.1%	Feb 08	16054	2436	15.2%	Feb 08	64271	22271	34.7%
Mar 08	782	300	38.4%	Mar 08	16022	2385	14.9%	Mar 08	63435	21994	34.7%
Apr 08	794			Apr 08	16152			Apr 08	63167		



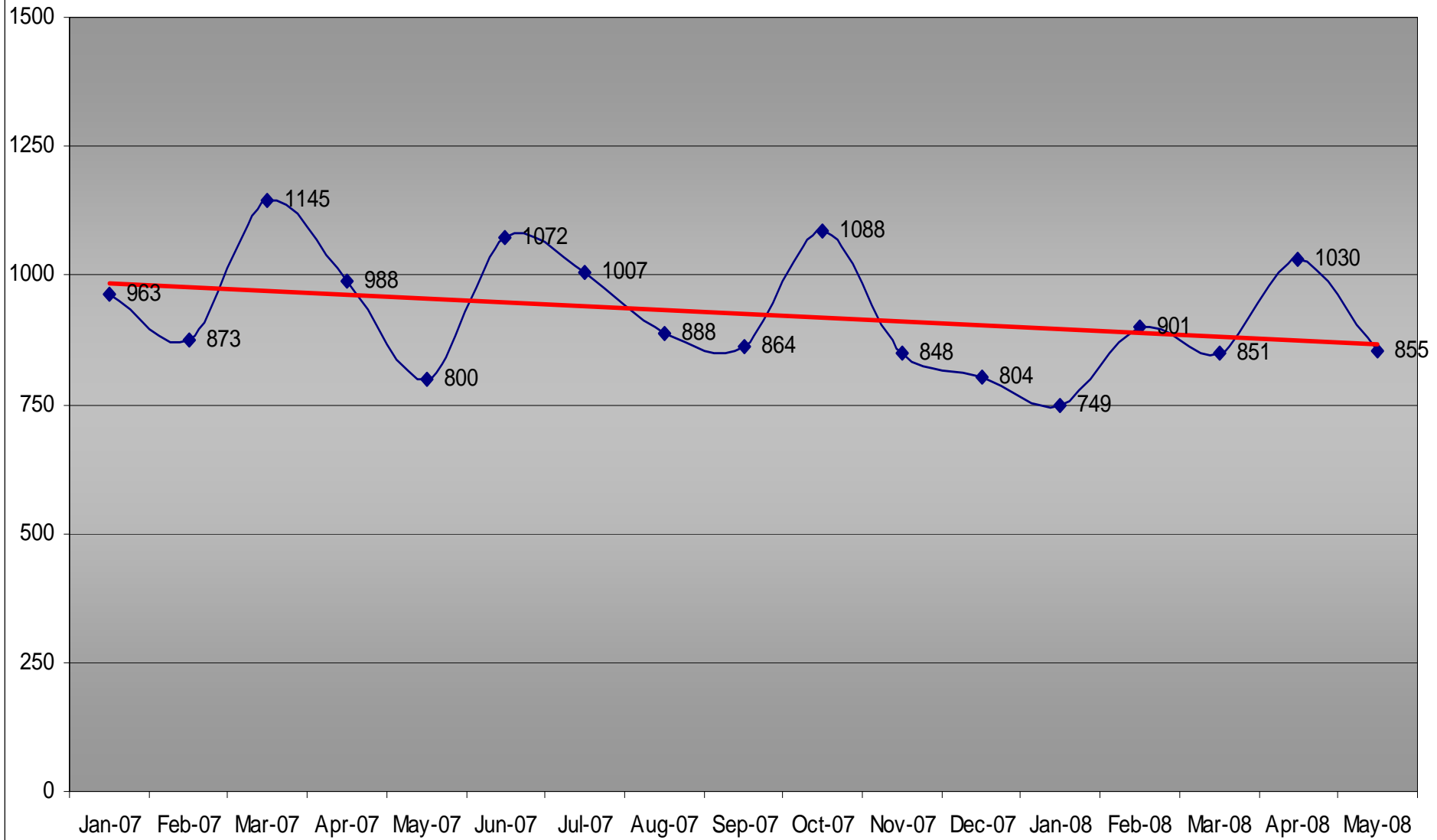
Source: CJ-MIS April 2008

Offences Brought To Justice by Category



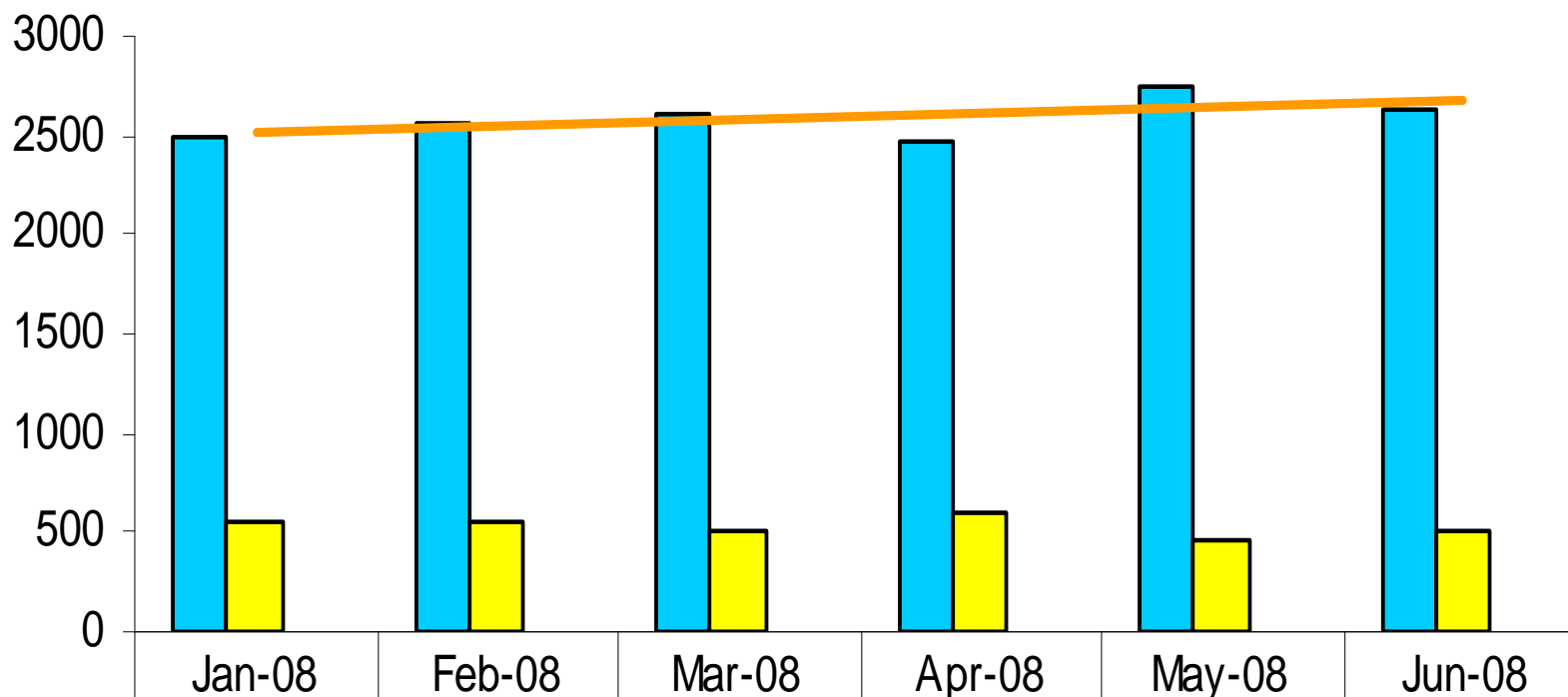
Source: MIS Data – OBTJ (June)

Convictions - Jan '07 to May '08



Source: MIS (BTJ Data -Jan '07 to May '08)

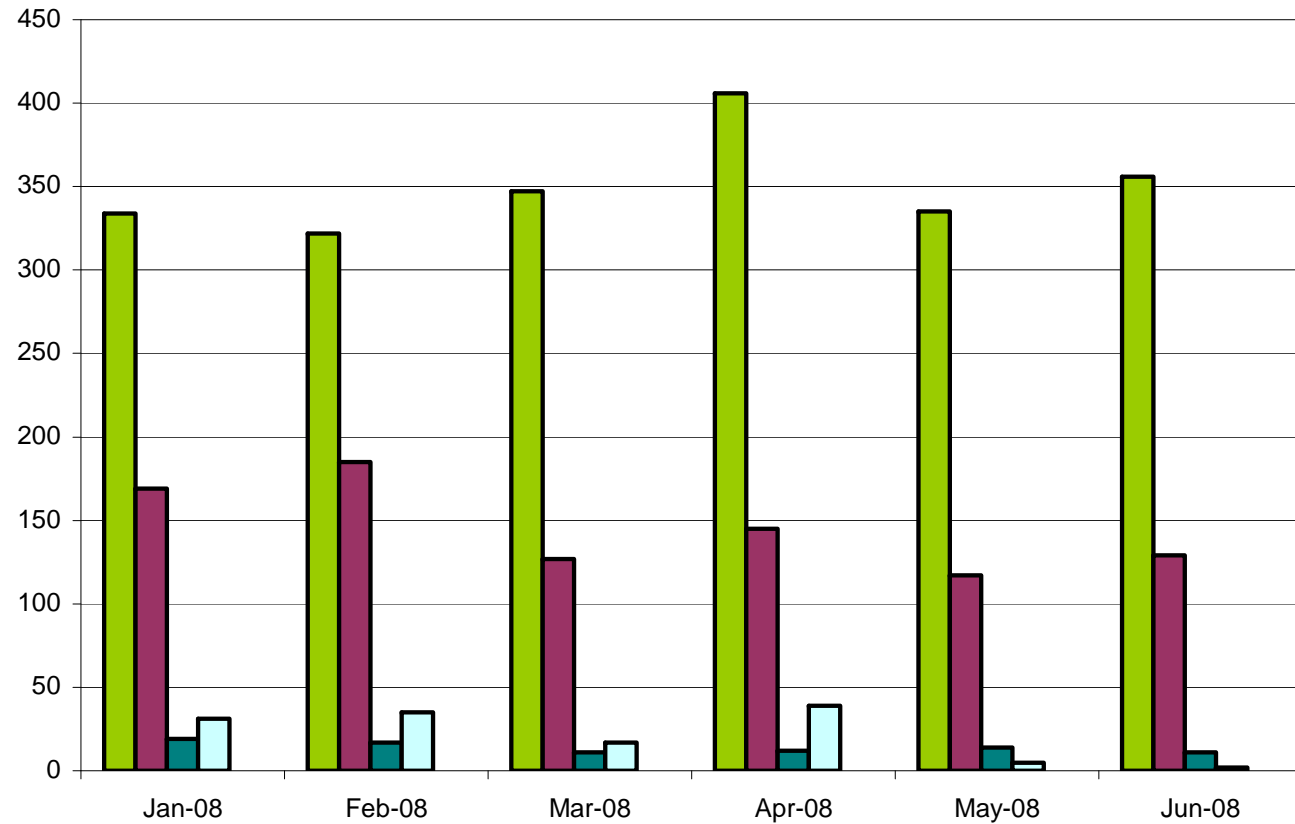
Total Arrests and Statutory Charge Referrals



■ Total Arrests	2503	2570	2607	2473	2753	2638
■ Statutory Charge	553	559	502	602	471	498
Percentage	22.1%	21.8%	19.3%	24.3%	17.1%	18.9%

Source: MIS (BTJ Data -June) and CPS (PTPM02-June)

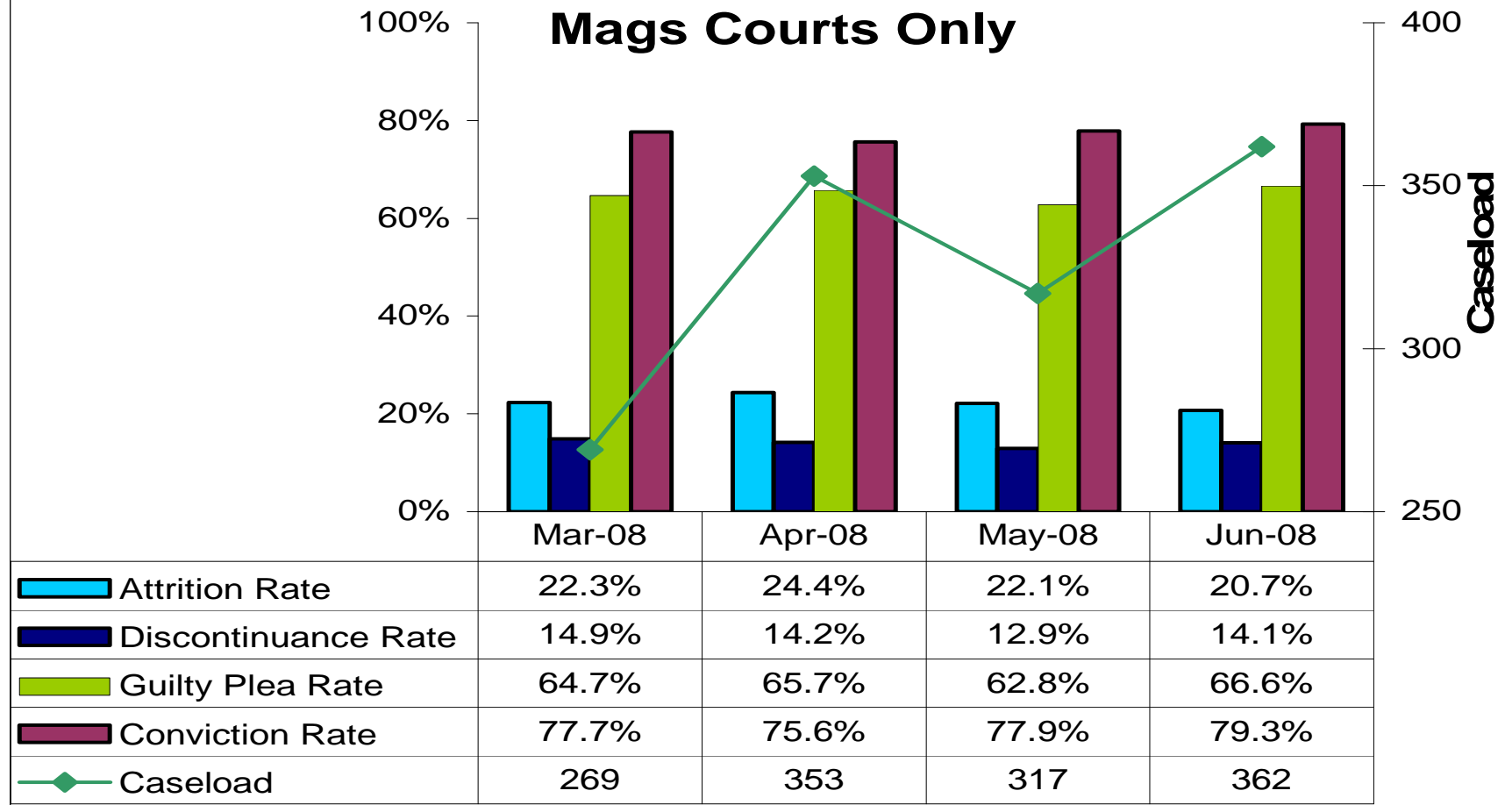
Statutory Charge Referrals by "Last Decision Made"



	Jan-08	Feb-08	Mar-08	Apr-08	May-08	Jun-08
■ Charge	334	322	347	406	335	356
■ NFA	169	185	127	145	117	129
■ Caution, TIC, etc	19	17	11	12	14	11
■ Other	31	35	17	39	5	2
■ On Bail for Further Enquiries	0	0	0	0	0	0

Source: CPS PTPM02 (June)

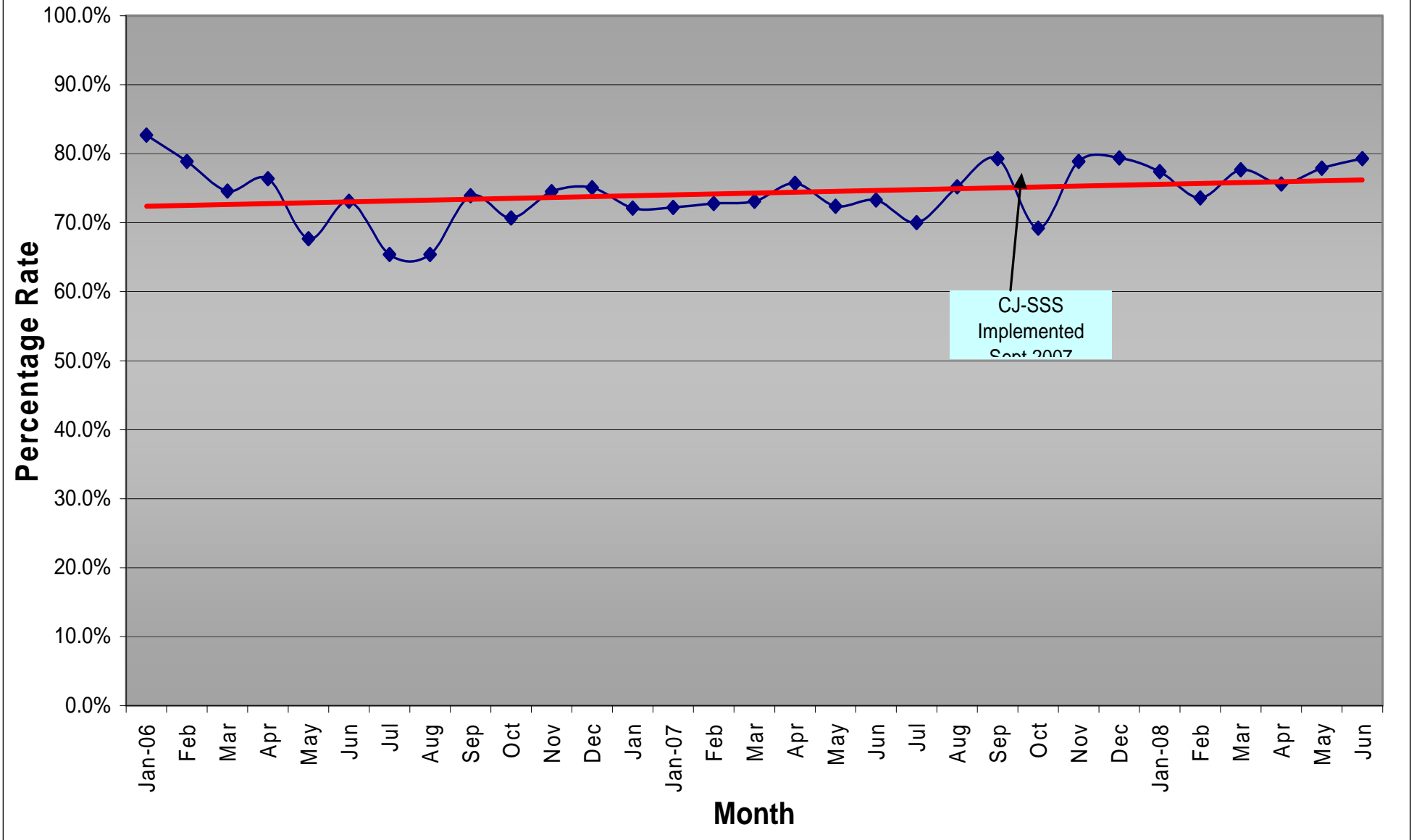
Statutory Charging Programme - Outcomes for Defendants Subject to Pre-Charge Decisions Mags Courts Only



Source: PCD Benefits Model – June

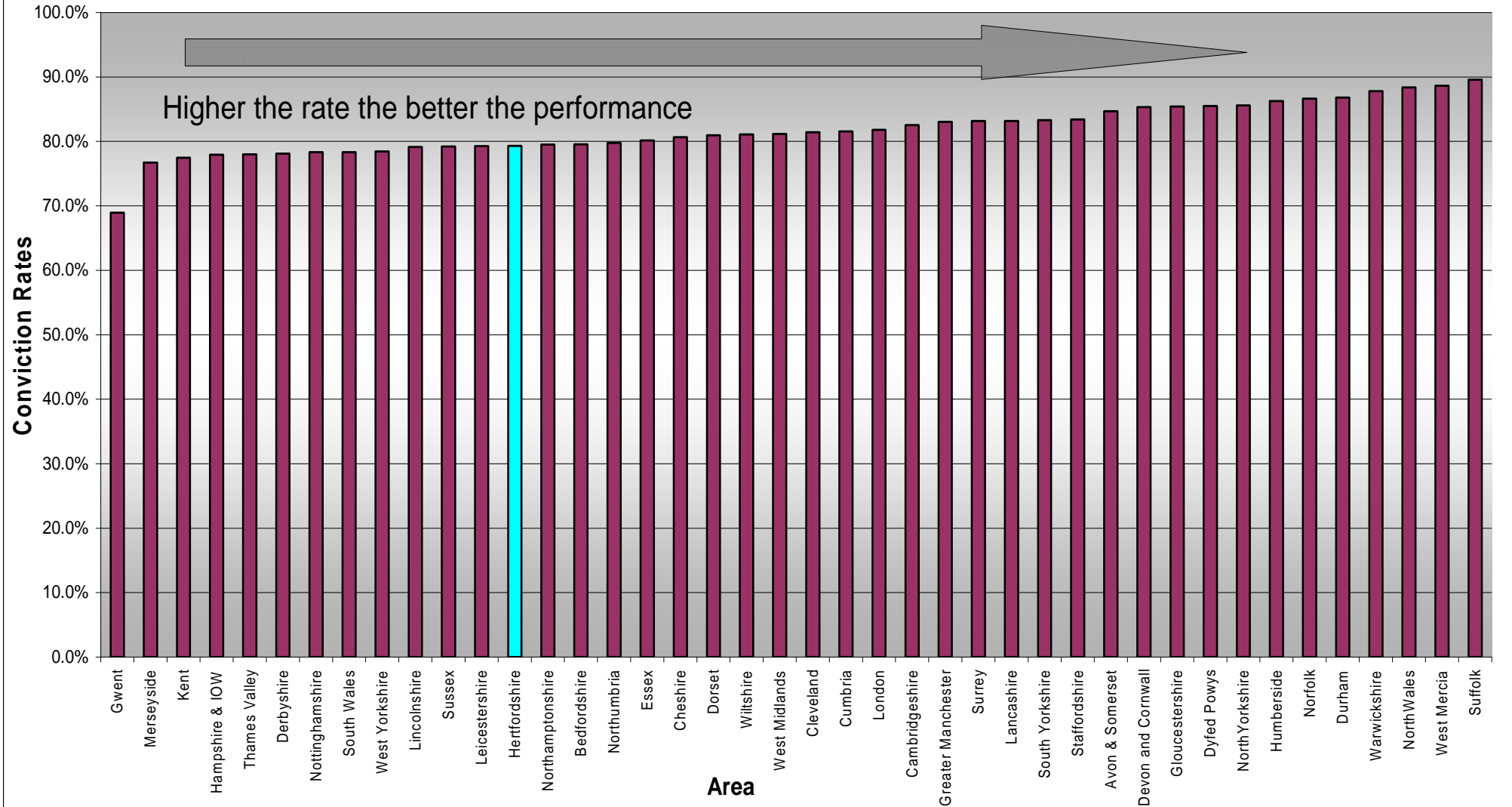
A Conviction is defined as: A judgment of the court based either on the decision of a jury or judge that the defendant is guilty of the crime for which he or she was tried.

Conviction Rates for Magistrates Courts in Hertfordshire Jan 2006 to Jun 2008



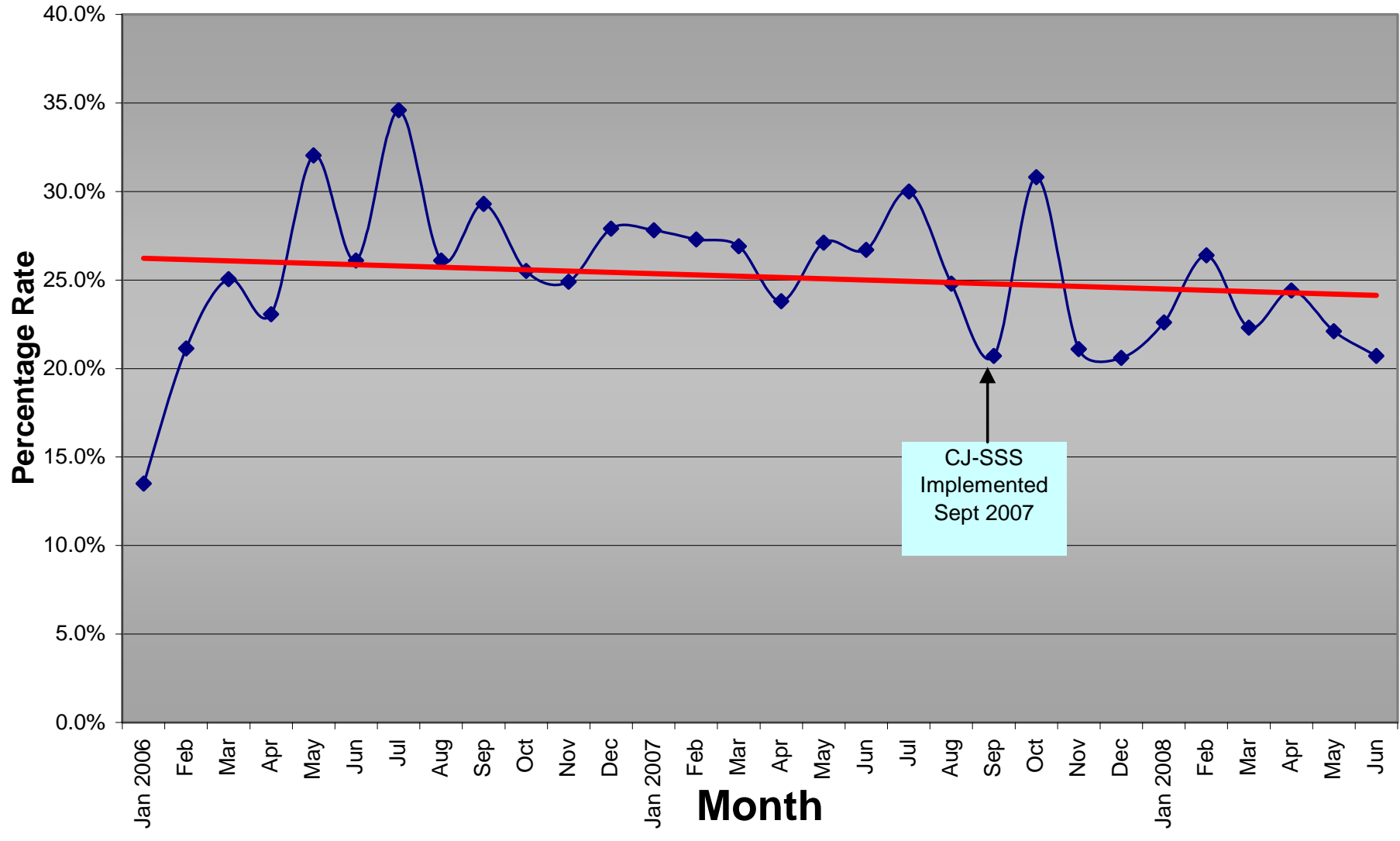
Source: PCD Benefits Model – Jun 2008

Convictions - Jun 2008



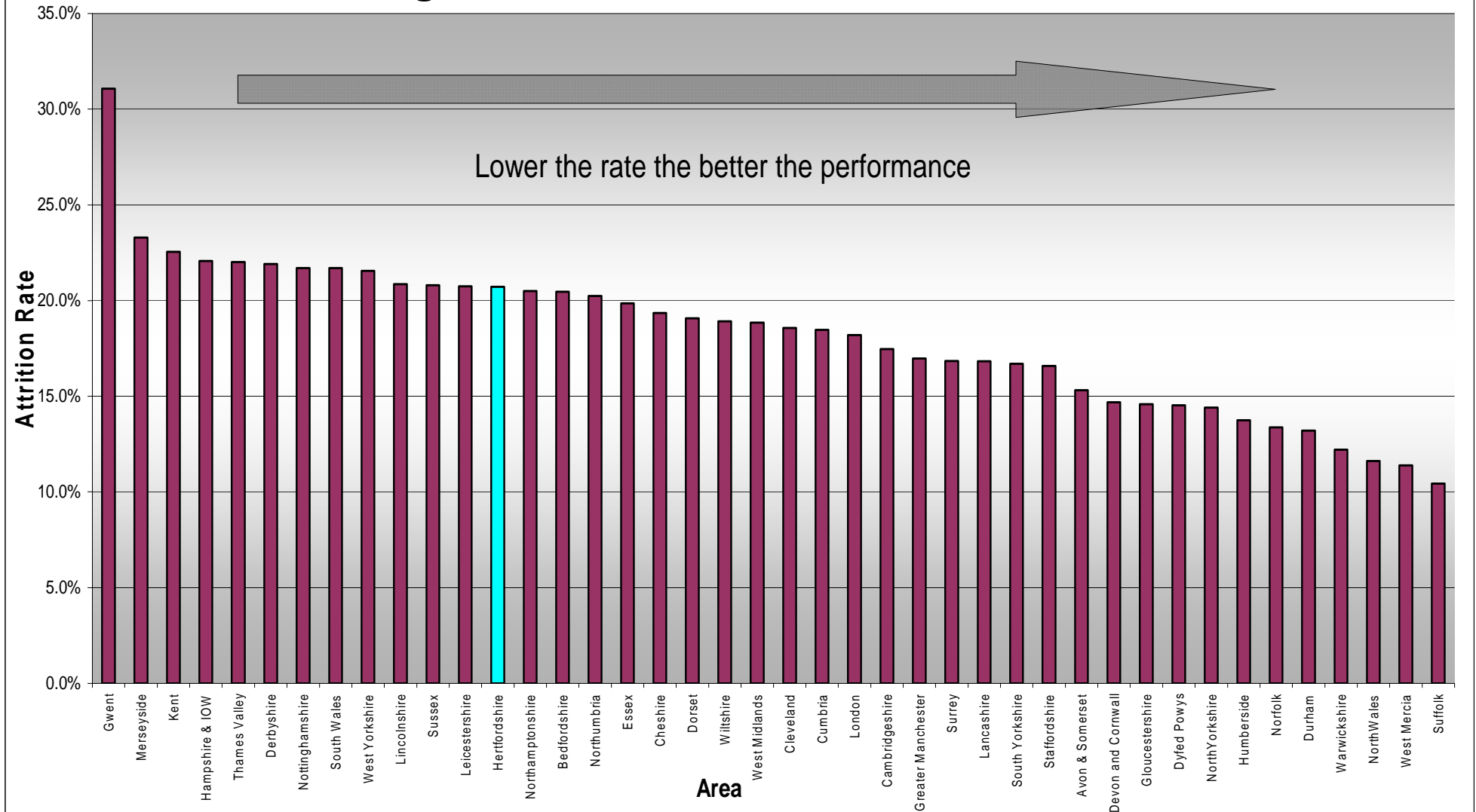
Source: PCD Benefits Model – June 2008

Attrition Rate for Magistrates Cases in Hertfordshire Jan 2006 to Jun 2008



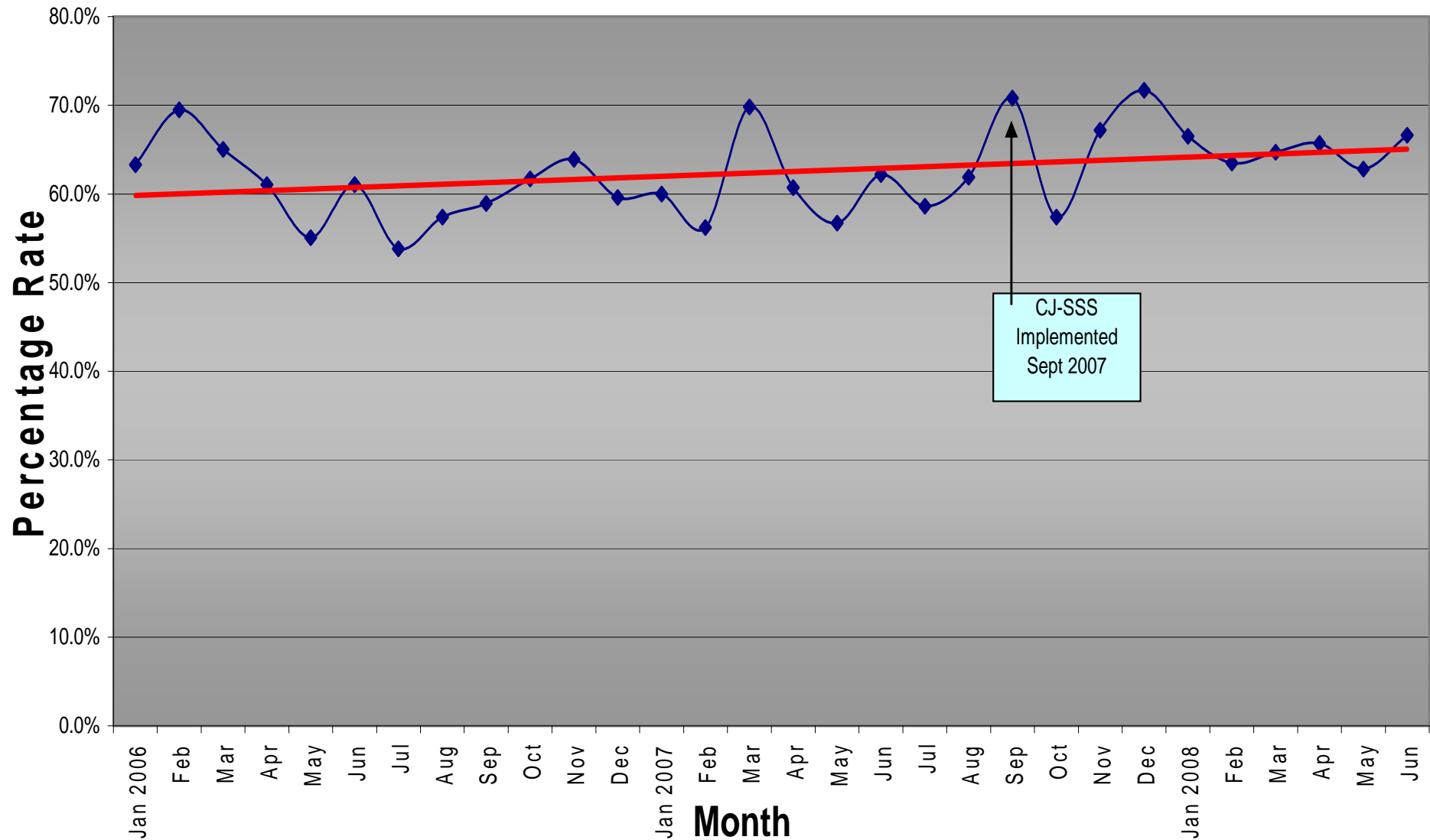
Source: PCD Benefits Model - June 2008

Magistrates Court Attrition - Jun 2008



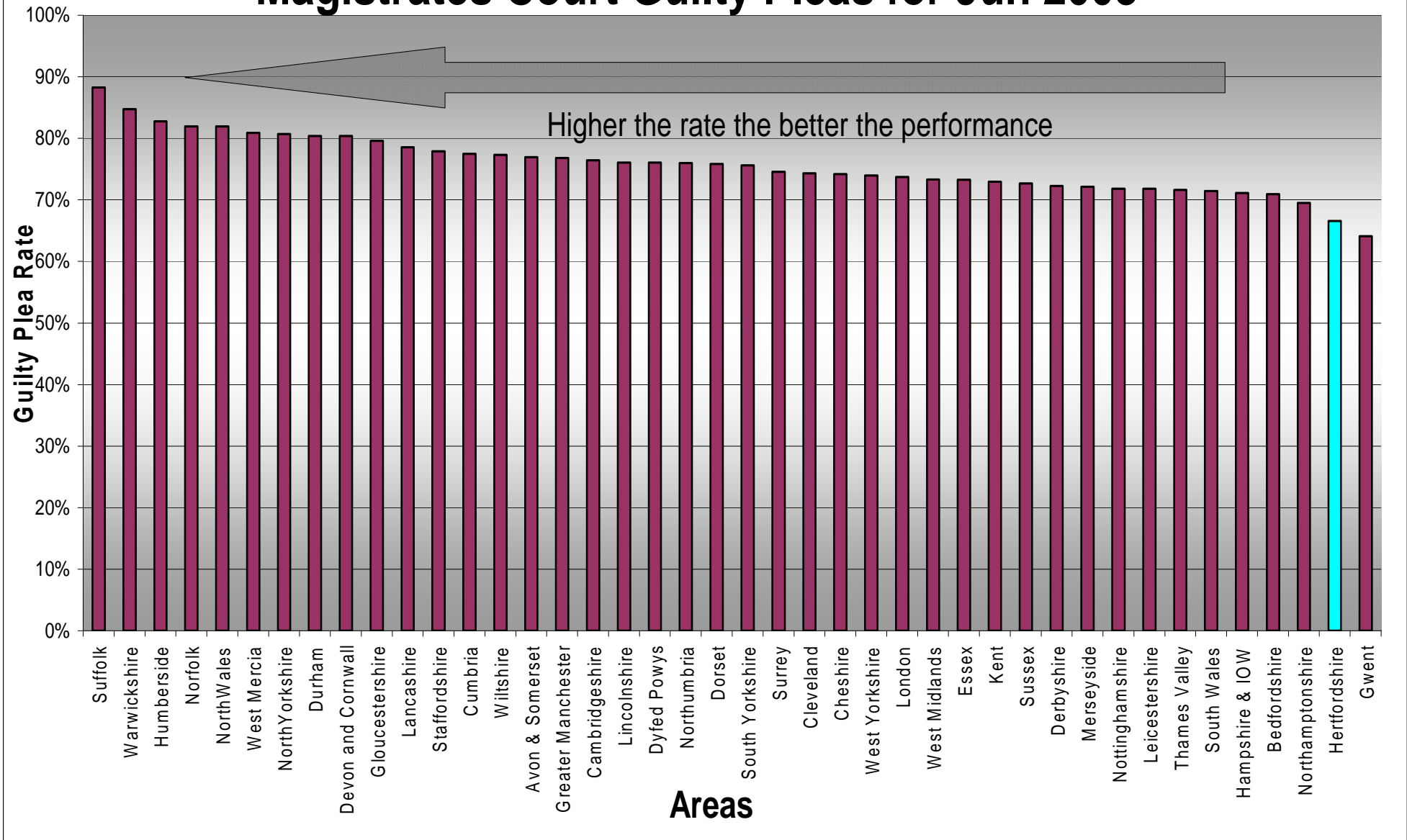
Source: PCD Benefits Model - Jun 2008

Guilty Plea Rate of Magistrates Cases in Hertfordshire Jan 2006 to Jun 2008



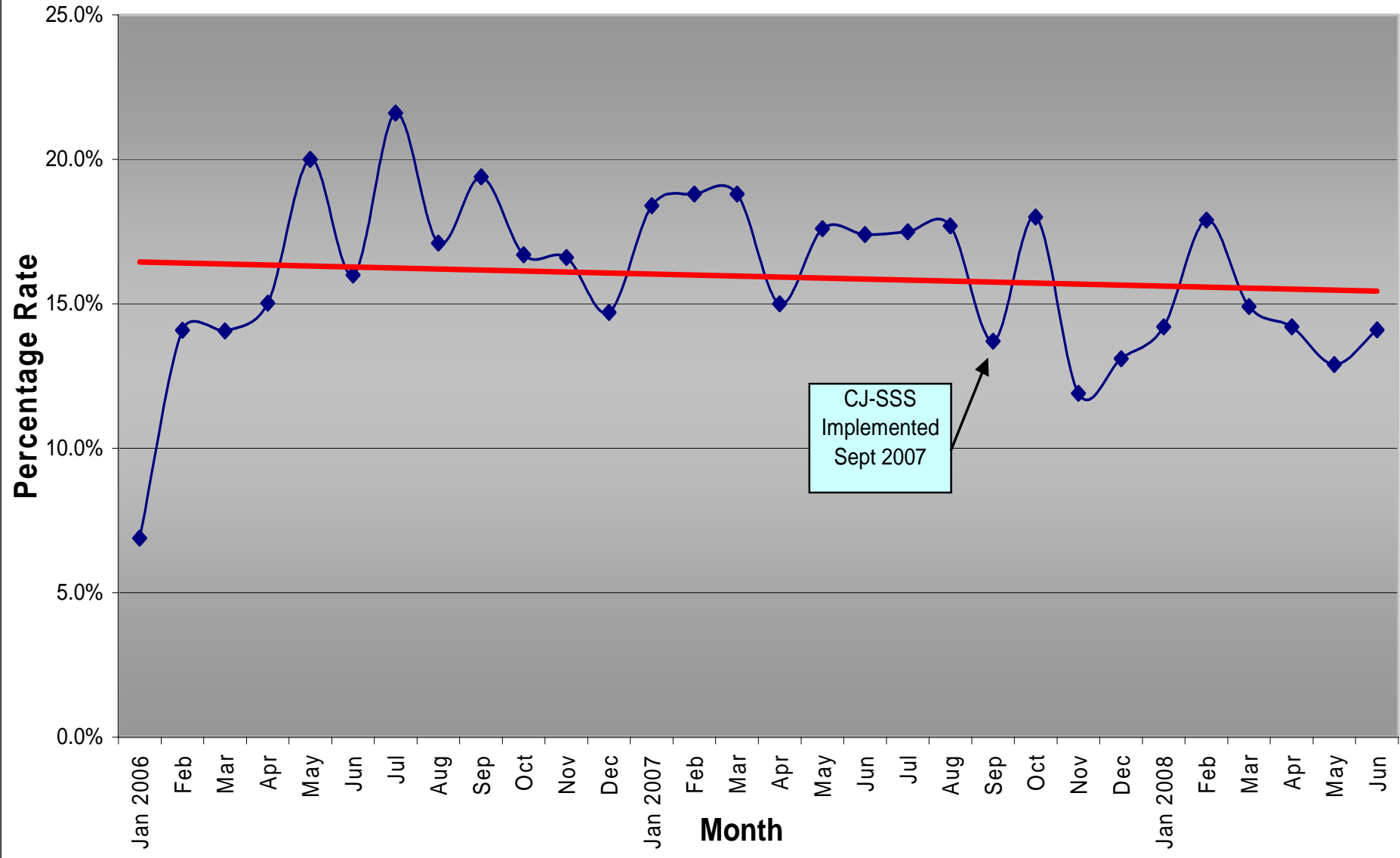
Source: PCD Benefits Model – Jun 2008

Magistrates Court Guilty Pleas for Jun 2008



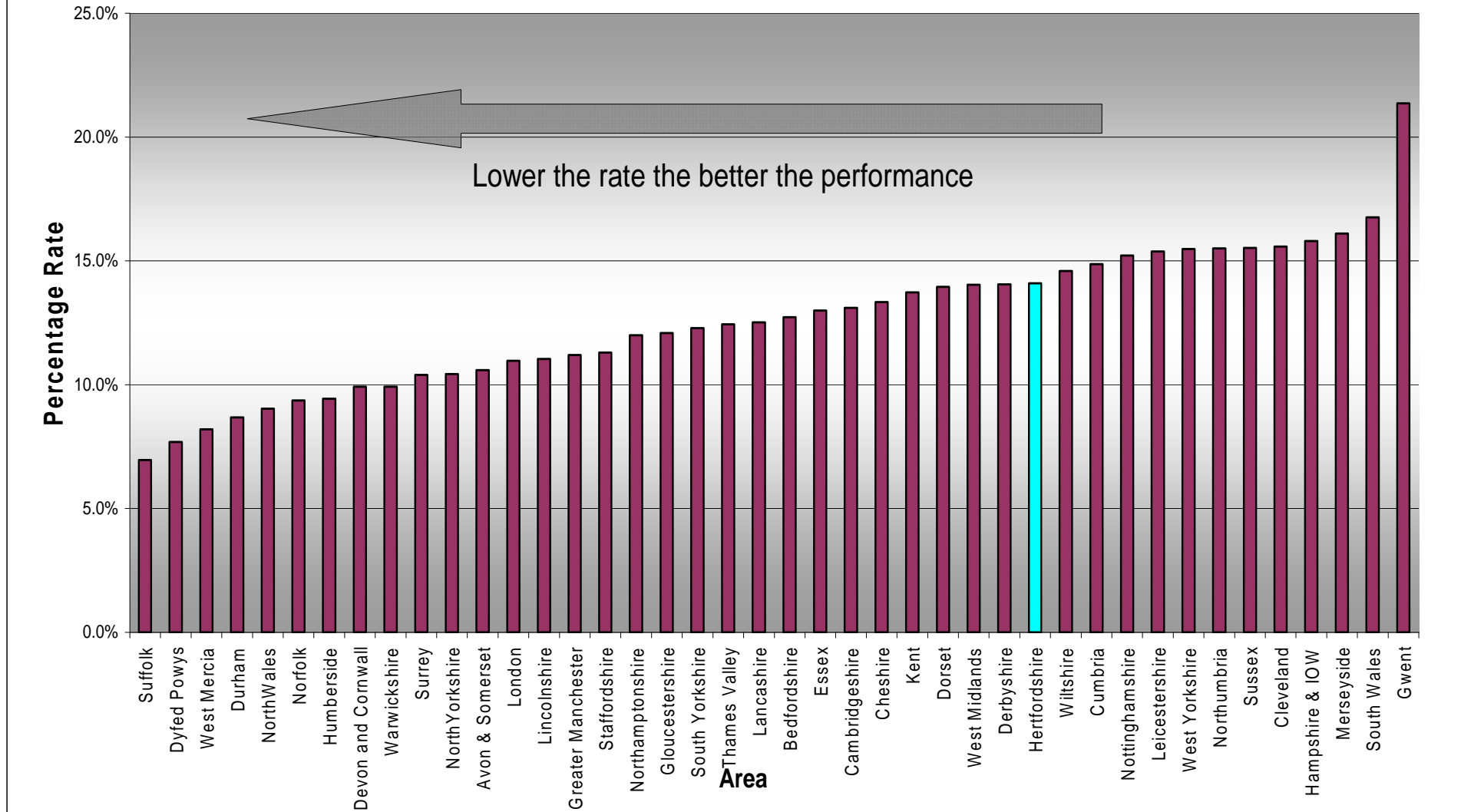
Source: PCD Benefits Model - Jun 2008

Discontinuance Rate of Magistrates Cases in Hertfordshire Jan 2006 to Jun 2008

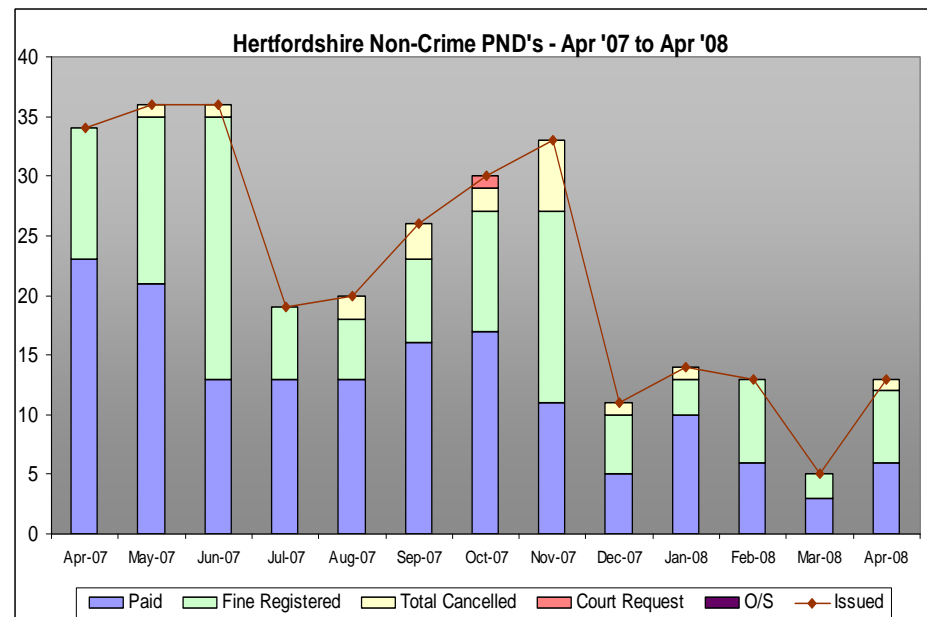
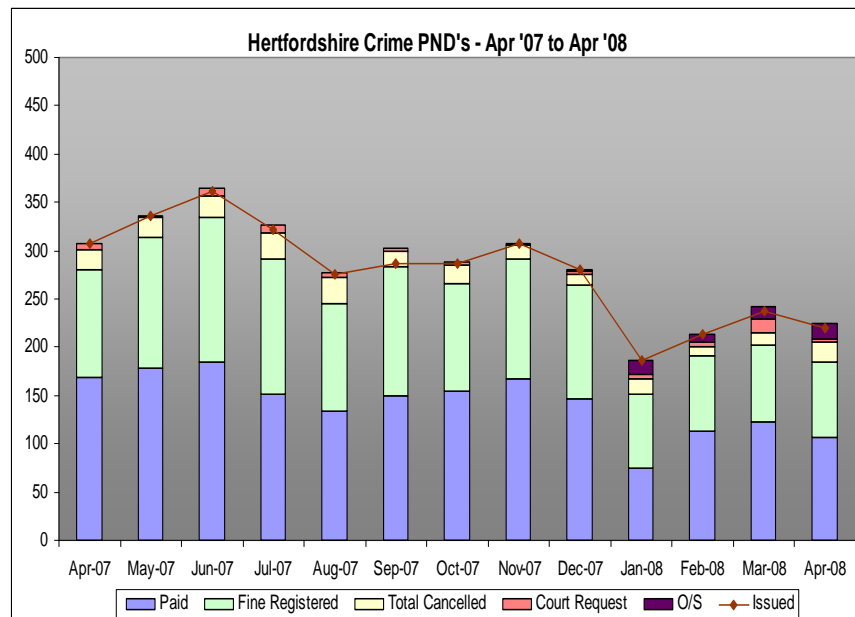


Source: PCD Benefits Model Jun 2008

Magistrates Court Discontinuance for Jun 2008



Source: PCD Benefits Model – Jun 2008



	Issued	Paid	Fine Registered	Total Cancelled	Court Request	O/S
Apr-07	307	169	112	20	6	0
May-07	336	178	135	22	1	0
Jun-07	362	184	151	22	8	0
Jul-07	322	151	140	28	8	0
Aug-07	275	133	112	28	4	0
Sep-07	286	150	133	16	4	0
Oct-07	287	154	112	19	3	0
Nov-07	307	167	125	13	2	0
Dec-07	281	146	119	11	3	2
Jan-08	186	75	77	15	5	14
Feb-08	213	113	78	10	5	8
Mar-08	238	123	80	12	14	13
Apr-08	220	107	77	22	2	16

	Issued	Paid	Fine Registered	Total Cancelled	Court Request	O/S
Apr-07	34	23	11	0	0	0
May-07	36	21	14	1	0	0
Jun-07	36	13	22	1	0	0
Jul-07	19	13	6	0	0	0
Aug-07	20	13	5	2	0	0
Sep-07	26	16	7	3	0	0
Oct-07	30	17	10	2	1	0
Nov-07	33	11	16	6	0	0
Dec-07	11	5	5	1	0	0
Jan-08	14	10	3	1	0	0
Feb-08	13	6	7	0	0	0
Mar-08	5	3	2	0	0	0
Apr-08	13	6	6	1	0	0

Source: CTO – April 2008

CJ-SSS Performance Report – June 2008

County Summary Sheet

CJ-SSS Hertfordshire	Local Base	Jan-08	Feb-08	Mar-08	Apr-08	May-08	Jun-08
Initial Plea Rate at first listing	71%	78% 444	78% 447	78% 347	80% 449	80% 465	76% 358
Initial guilty plea rate at first listing or before	49%	58% 332	55% 316	59% 261	55% 310	58% 340	56% 265
Initial not guilty plea at first listing or before	27%	20% 112	23% 131	19% 86	23% 127	21% 125	20% 93
Case where no plea is entered at first hearing	19%	2% 10	3% 17	2% 9	4% 23	3% 19	3% 14
Defendant fails to appear at first hearing	7%	13% 74	11% 63	11% 50	11% 61	8% 49	13% 61
Committals to Crown Court	7%	7% 40	8% 45	9% 39	7% 42	9% 51	9% 61
Caseload at first hearing		568	572	445	563	584	474
Initial guilty pleas disposed of at first listing (OCJR Target = 60%)	73%	83% 274	76% 240	77% 201	75% 231	71% 243	72% 190

CJU Returns – Jun 2008

We have missed 2 targets in June:

- “Fail to Appear at First Hearing” has risen sharply for June by 5% pts to 13% and is now 6% pts off target
- “Committals to Crown Court” has remained steady at 9% but this is 2% pts off target
- “Initial Guilty Pleas Disposed of at 1st Hearing” continues to fall and is again below our local target, but still well within the OCJR target

Central Herts

Central Herts Magistrates Courts	Source	Target	TIS Base	Local Base	Jan-08	Feb-08	Mar-08	Apr-08	May-08	Jun-08
Initial Plea Rates										
Initial Plea Rate at first listing	CJU		76%	67%	73% 148	77% 117	78% 105	77% 110	82% 117	76% 110
Initial guilty plea rate at first listing or before	CJU		57%	49%	59% 119	63% 95	60% 80	62% 87	61% 87	58% 83
Initial not guilty plea at first listing or before	CJU		19%	18%	14% 29	15% 22	19% 25	15% 21	21% 30	19% 27
Case where no plea is entered at first hearing	CJU		21%	22%	3% 6	7% 10	5% 7	7% 10	3% 5	6% 9
Defendant fails to appear at first hearing	CJU			7%	16% 33	11% 16	10% 14	7% 10	5% 7	8% 12
Committals to Crown Court	CJU		3%	4%	7% 15	5% 8	6% 8	9% 12	10% 14	9% 13
First hearing										
Caseload at first hearing	CJU				202	151	134	140	143	144
% of cases adjourned without plea, by reason	CJU	Legal Aid			33% 2	0%	17% 1	0%	14% 1	0%
	CJU	Defence App			0% 2	0% 2	0% 2	30% 1	14% 1	11% 1
	CJU	Prosecution App			33% 2	20% 2	33% 2	10% 1	0% 0	44% 4
	CJU	No Advance Info			0% 2	0% 8	0% 3	0% 6	0% 5	0% 4
	CJU	Other			33% 2	80% 8	50% 3	60% 6	71% 5	44% 4
% of Oral reports given	Probation				23% 18	6% 5	9% 7	17% 14	8% 6	20% 15
% of SDRs	Probation				57% 44	71% 56	72% 57	69% 58	76% 54	72% 54
% of FDRs dealt with the same day	Probation				19% 15	23% 18	19% 15	14% 12	15% 11	8% 6
Disposals										
Initial guilty pleas disposed of at first listing	CJU	60%	55%	73%	84% 100	74% 70	79% 63	82% 71	74% 64	75% 62
Contested cases (including cases where initial plea was not guilty or no plea) disposed of in 2 hearings	CJU		24%		38% 13	70% 30	67% 2	86% 6	60% 3	
Contested cases (including cases where initial plea was not guilty or no plea) disposed of in 3 hearings	CJU	70%	51%		94% 32	100% 43	100% 1	100% 1	100% 2	
Timeliness										
Trials commenced within 8 weeks of first hearing	HMCS	80%	14%							
Average number of days from charge to disposal in Magistrates Courts	HMCS	42	72							
Average number of hearings for contested cases	HMCS	2	4							
Cracked and Ineffective trials										
% Effective trials	HMCS			42.9%	30.5%	47.0%	43.2%	41.5%	34.8%	
% Cracked trials	HMCS	29.5%		30.7%	40.5%	31.1%	27.3%	29.7%	41.6%	
% Ineffective trials	HMCS	19.0%		26.1%	29.0%	22.0%	29.5%	28.8%	23.6%	
% Vacated trials	HMCS			30.0%	22.0%	19.0%	31.3%	21.9%	23.3%	
% Discontinued trials	CPS			10.0%	14.1%	8.0%	9.8%	11.9%	11.0%	

East Herts

East Herts Magistrates Courts	Source	Target	TIS Base	Local Base	Jan-08	Feb-08	Mar-08	Apr-08	May-08	Jun-08
Initial Plea Rates										
Initial Plea Rate at first listing	CJU		60%	76%	80% 135	86% 105	81% 71	81% 95	73% 108	74% 67
Initial guilty plea rate at first listing or before	CJU		45%	49%	57% 96	64% 78	59% 52	50% 59	46% 68	51% 46
Initial not guilty plea at first listing or before	CJU		15%	28%	23% 39	22% 27	22% 19	31% 36	27% 40	23% 21
Case where no plea is entered at first hearing	CJU		29%	22%	2% 3	0%	2% 2	3% 3	3% 5	1% 1
Defendant fails to appear at first hearing	CJU			6%	11% 18	9% 11	9% 8	9% 10	9% 13	19% 17
Committals to Crown Court	CJU		10%	7%	7% 12	5% 6	8% 7	8% 9	15% 22	7% 6
First hearing										
Caseload at first hearing	CJU				168	122	88	117	148	91
% of cases adjourned without plea, by reason	CJU	Legal Aid			0%	0%	50% 1	33% 1	20% 1	100% 1
	CJU	Defence App			0%	0%	0%	0%	20% 1	0%
	CJU	Prosecution App			66% 2	0%	50% 1	0%	20% 1	0%
	CJU	No Advance Info			0%	0%	0%	0%	0%	0%
	CJU	Other			33% 1	0%	0%	66% 2	40% 2	0%
% of Oral reports given	Probation				29% 32	8% 5	11% 5	17% 9	14% 5	12% 5
% of SDRs	Probation				16% 17	64% 39	71% 32	69% 36	57% 21	70% 30
% of FDRs dealt with the same day	Probation				55% 60	28% 17	18% 8	13% 7	30% 11	19% 8
Disposals										
Initial guilty pleas disposed of at first listing	CJU	60%	65%	73%	80% 77	71% 55	75% 39	75% 44	75% 51	70% 32
Contested cases (including cases where initial plea was not guilty or no plea) disposed of in 2 hearings	CJU		38%			50% 1	86% 6	75% 6	50% 8	
Contested cases (including cases where initial plea was not guilty or no plea) disposed of in 3 hearings	CJU	70%	61%			100% 2	100% 1	100% 2	100% 8	
Timeliness										
Trials commenced within 8 weeks of first hearing	HMCS	80%	30%							
Average number of days from charge to disposal in Magistrates Courts	HMCS	42	78							
Average number of hearings for contested cases	HMCS	2	4							
Cracked and Ineffective trials										
% Effective trials	HMCS			41.3%	42.0%	55.9%	42.9%	40.9%	51.1%	
% Cracked trials	HMCS	29.5%		30.7%	31.2%	26.9%	32.0%	28.8%	20.2%	
% Ineffective trials	HMCS	19.0%		28.0%	27.0%	17.2%	26.2%	30.3%	28.7%	
% Vacated trials	HMCS			21.7%	26.7%	21.8%	15.2%	10.2%	24.8%	
% Discontinued trials	CPS			8.5%	11.5%	16.1%	15.7%	12.6%	13.3%	

North Herts

North Herts Magistrates Courts	Source	Target	TIS Base	Local Base	Jan-08	Feb-08	Mar-08	Apr-08	May-08	Jun-08
Initial Plea Rates										
Initial Plea Rate at first listing	CJU		60%	76%		67%	82%	75%	82%	83%
						74	75	97	103	89
Initial guilty plea rate at first listing or before	CJU		45%	49%		41%	58%	47%	56%	61%
						45	53	61	70	65
Initial not guilty plea at first listing or before	CJU		15%	28%		26%	24%	28%	26%	22%
						29	22	36	33	24
Case where no plea is entered at first hearing	CJU		29%	22%		5%	0%	1%	4%	1%
						5		1	5	1
Defendant fails to appear at first hearing	CJU			6%		17%	10%	17%	10%	7%
						19	9	22	12	7
Committals to Crown Court	CJU		10%	7%		11%	9%	8%	5%	9%
						12	8	10	6	10
First hearing										
Caseload at first hearing	CJU					110	92	130	126	107
% of cases adjourned without plea, by reason	CJU	Legal Aid				20%	0%	0%	20%	0%
						1			1	
	CJU	Defence App				0%	0%	0%	20%	0%
									1	
	CJU	Prosecution App				60%	0%	0%	20%	100%
						3			1	1
	CJU	No Advance Info				0%	0%	0%	0%	0%
	CJU	Other				20%	0%	100%	40%	0%
						1		1	2	
% of Oral reports given	Probation					14%	13%	14%	17%	21%
						7	6	8	11	10
% of SDRs	Probation					68%	70%	76%	58%	65%
						34	33	45	38	31
% of FDRs dealt with the same day	Probation					18%	17%	10%	26%	15%
						9	8	6	17	7
Disposals										
Initial guilty pleas disposed of at first listing	CJU	60%	65%	73%		87%	75%	66%	83%	66%
						39	40	40	58	45
Contested cases (including cases where initial plea was not guilty or no plea) disposed of in 2 hearings	CJU		38%			100%	100%	60%	57%	76%
						2	2	6	4	13
Contested cases (including cases where initial plea was not guilty or no plea) disposed of in 3 hearings	CJU	70%	61%			100%	100%	100%	100%	100%
						2	2	4	3	4
Timeliness										
Trials commenced within 8 weeks of first hearing	HMCS	80%	30%							
Average number of days from charge to disposal in Magistrates Courts	HMCS	42	78							
Average number of hearings for contested cases	HMCS	2	4							
Cracked and Ineffective trials										
% Effective trials	HMCS			41.3%		52.2%	34.1%	46.9%	38.1%	
% Cracked trials	HMCS	29.5%		30.7%		23.2%	40.2%	28.3%	29.5%	
% Ineffective trials	HMCS	19.0%		28.0%		24.6%	25.6%	24.8%	32.4%	
% Vacated trials	HMCS			21.7%		24.2%	21.2%	19.9%	29.1%	
% Discontinued trials	CPS			8.5%		16.1%	15.7%	12.6%	13.3%	

West Herts

West Herts Magistrates Courts	Source	Target	TIS Base	Local Base	Jan-08	Feb-08	Mar-08	Apr-08	May-08	Jun-08
Initial Plea Rates										
Initial Plea Rate at first listing	CJU		67%	69%	81%	80%	73%	78%	82%	70%
					161	151	96	147	137	92
Initial guilty plea rate at first listing or before	CJU		45%	49%	59%	52%	58%	59%	69%	54%
					117	98	76	103	115	71
Initial not guilty plea at first listing or before	CJU		22%	34%	22%	28%	15%	19%	13%	16%
					44	53	20	34	22	21
Case where no plea is entered at first hearing	CJU		26%	13%	1%	1%	0%	5%	2%	2%
					1	2		9	4	3
Defendant fails to appear at first hearing	CJU			8%	12%	9%	15%	11%	10%	19%
					23	17	19	19	17	25
Committals to Crown Court	CJU		6%	9%	7%	10%	12%	6%	5%	9%
					13	19	16	11	9	12
First hearing										
Caseload at first hearing	CJU				198	189	131	176	167	132
% of cases adjourned without plea, by reason	CJU	Legal Aid			0%	50%	0%	0%	60%	0%
	CJU	Defence App			0%	0%	0%	0%	0%	33%
	CJU	Prosecution App			0%	50%	0%	0%	0%	0%
	CJU	No Advance Info			0%	0%	0%	0%	0%	0%
	CJU	Other			100%	0%	100%	100%	40%	67%
% of Oral reports given	Probation				11%	19%	11%	14%	18%	7%
					1	2	9	2	2	6
% of SDRs	Probation				73%	66%	78%	69%	64%	72%
					47	52	71	59	57	63
% of FDRs dealt with the same day	Probation				16%	15%	11%	16%	18%	21%
					10	12	10	14	16	18
Disposals										
Initial guilty pleas disposed of at first listing	CJU	60%	58%	73%	83%	78%	78%	74%	70%	72%
					97	76	59	76	80	51
Contested cases (including cases where initial plea was not guilty or no plea) disposed of in 2 hearings	CJU		39%		84%	73%	64%			
					16	11	14			
Contested cases (including cases where initial plea was not guilty or no plea) disposed of in 3 hearings	CJU	70%	65%		100%	100%	100%			
					19	15	8			
Timeliness										
Trials commenced within 8 weeks of first hearing	HMCS	80%	50%							
Average number of days from charge to disposal in Magistrates Courts	HMCS	42	89							
Average number of hearings for contested cases	HMCS	2	4							
Cracked and Ineffective trials										
% Effective trials	HMCS			46.3%	45.2%	51.3%	37.6%	48.4%	55.4%	
% Cracked trials	HMCS	29.5%		32.9%	34.8%	32.9%	36.6%	29.7%	24.3%	
% Ineffective trials	HMCS	19.0%		20.8%	20.0%	15.8%	25.7%	22.0%	20.3%	
% Vacated trials	HMCS			39.2%	29.9%	35.6%	25.7%	25.4%	33.9%	
% Discontinued trials	CPS			10.8%	16.4%	23.4%	16.5%	15.2%	12.7%	

The number of Conditional Cautions administered per month (May)

	2005-06	2006-07	07-08 Q1	07-08 Q2	07-08 Q3	Jan-08	Feb-08	Mar-08	Apr-08	May-08	Total to date
Avon & Somerset		1	7	16	29	20	11	22	23	27	156
Bedfordshire		5	3	4	17	5	8	2	3	5	52
BTP		22	4	8	22	5	6	4	3	9	83
Cambridgeshire			10	21	20	6	3	4	5	5	74
Cheshire		41	41	27	64	21	15	19	14	17	259
Cleveland			5	8	18	3	4	6	10	11	65
Cumbria			14	19	26	10	20	16	6	13	124
Derbyshire		1	8	5	12	6	6	4	11	9	62
Devon and Cornwall			0	17	45	21	23	19	19	12	156
Dorset		45	54	41	51	31	13	16	15	11	277
Durham		1	15	28	21	7	8	5	13	2	100
Dyfed Powys		25	33	37	16	15	16	8	14	9	173
Essex			6	9	22	8	13	9	13	7	87
Gloucestershire			0	8	8	1	1	4	12	10	44
Greater Manchester		21	12	4	8	2	4	8	14	12	85
Gwent			3	0	0	1	2	1	0	3	10
Hampshire & IOW		2	5	2	21	22	15	24	21	23	135
Hertfordshire			0	4	4	3	3	4	5	4	27
Humberside		9	16	15	7	3	11	14	10	11	96
Kent			5	14	21	15	16	15	24	15	125
Lancashire	323	1037	359	316	329	107	88	109	102	89	2859
Leicestershire			0	3	3	3	2	11	5	8	35
Lincolnshire			0	4	5	2	3	1	1	5	21
London		30	73	81	113	35	50	43	60	59	544
Merseyside	11	71	70	43	58	12	16	24	33	32	370
Norfolk			4	11	60	25	16	36	50	32	234
Northamptonshire					13	3	2	8	3	2	31
Northumbria	22	25	3	3	9	9	13	8	4	10	106
North Wales		21	32	68	63	27	13	27	22	9	282
North Yorkshire			1	60	75	26	31	16	32	20	261
Nottinghamshire			0	3	2	2	3	2	5	1	18
South Wales		3	3	6	6	13	4	6	10	8	59
South Yorkshire	27	62	32	49	57	17	11	22	23	23	323
Staffordshire		8	7	21	16	0	7	6	11	14	90
Suffolk			7	15	21	6	7	8	9	7	80
Surrey			0	8	7	4	3	15	7	5	49
Sussex			2	2	20	8	6	15	18	13	84
Thames Valley	46	50	26	21	23	5	7	9	9	15	211
Warwickshire			1	1	2	0	0	6	4	6	20
West Mercia	43	46	3	9	34	16	12	13	11	20	207
West Midlands	38	33	3	8	9	1	2	1	21	37	153
West Yorkshire			3	6	25	16	3	11	13	11	88
Wiltshire			0	3	3	1	5	8	4	6	30
Total	510	1559	870	1028	1385	543	502	609	692	647	8345
Total to date	510	2069	2939	3967	5352	5895	6397	7006	7698	8345	

PPO ARRESTS Within MSF	2008 - 09	Apr	May	Jun	Jul	Aug	Sep	Oct	Nov	Dec	Jan	Feb	Mar	Total PPO Arrests YTD	% of Total PPO arrests in MSF	Total of Different PPOs Arrested Year to Date	Total PPOs (Apr 08)	% of Total PPOs within MSF
Note: New structure for "Most Similar Groups"																		
Hertfordshire		34	24	31										89	9.9%	74	139	7.4%
Avon & Somerset		29	33	39										101	11.2%	84	247	13.2%
Bedfordshire		14	18	11										43	4.8%	34	111	5.9%
Essex		17	23	16										56	6.2%	50	239	12.8%
Hampshire		22	23	23										68	7.6%	63	266	14.2%
Kent		23	17	25										65	7.2%	54	237	12.7%
Sussex		81	93	80										254	28.3%	197	323	17.3%
Thames Valley		80	73	69										222	24.7%	168	306	16.4%
MSF Totals		300	304	294										898	100.0%	724	1868	100.0%

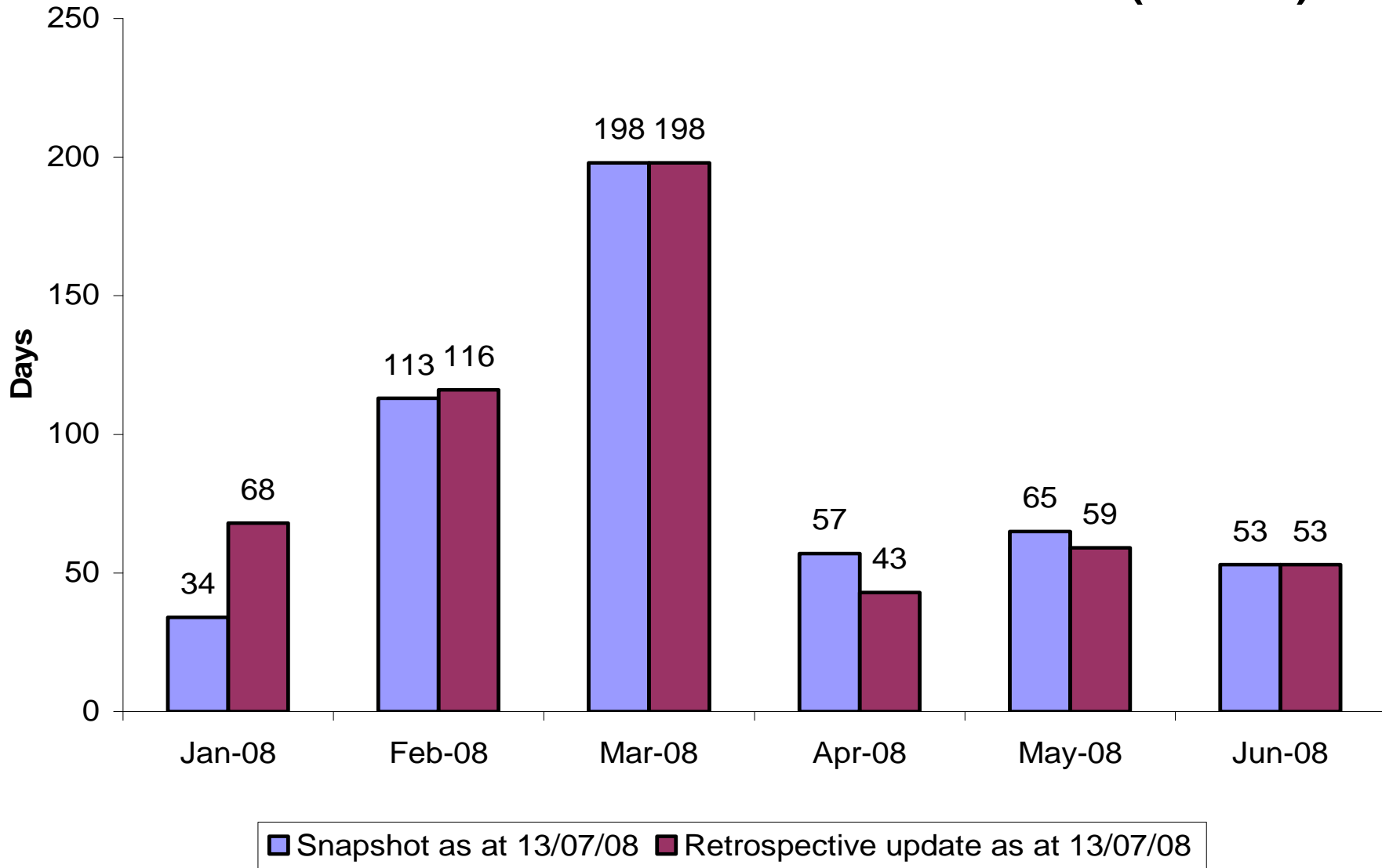
Source: JTRACK (CJS) as at 13/07/08

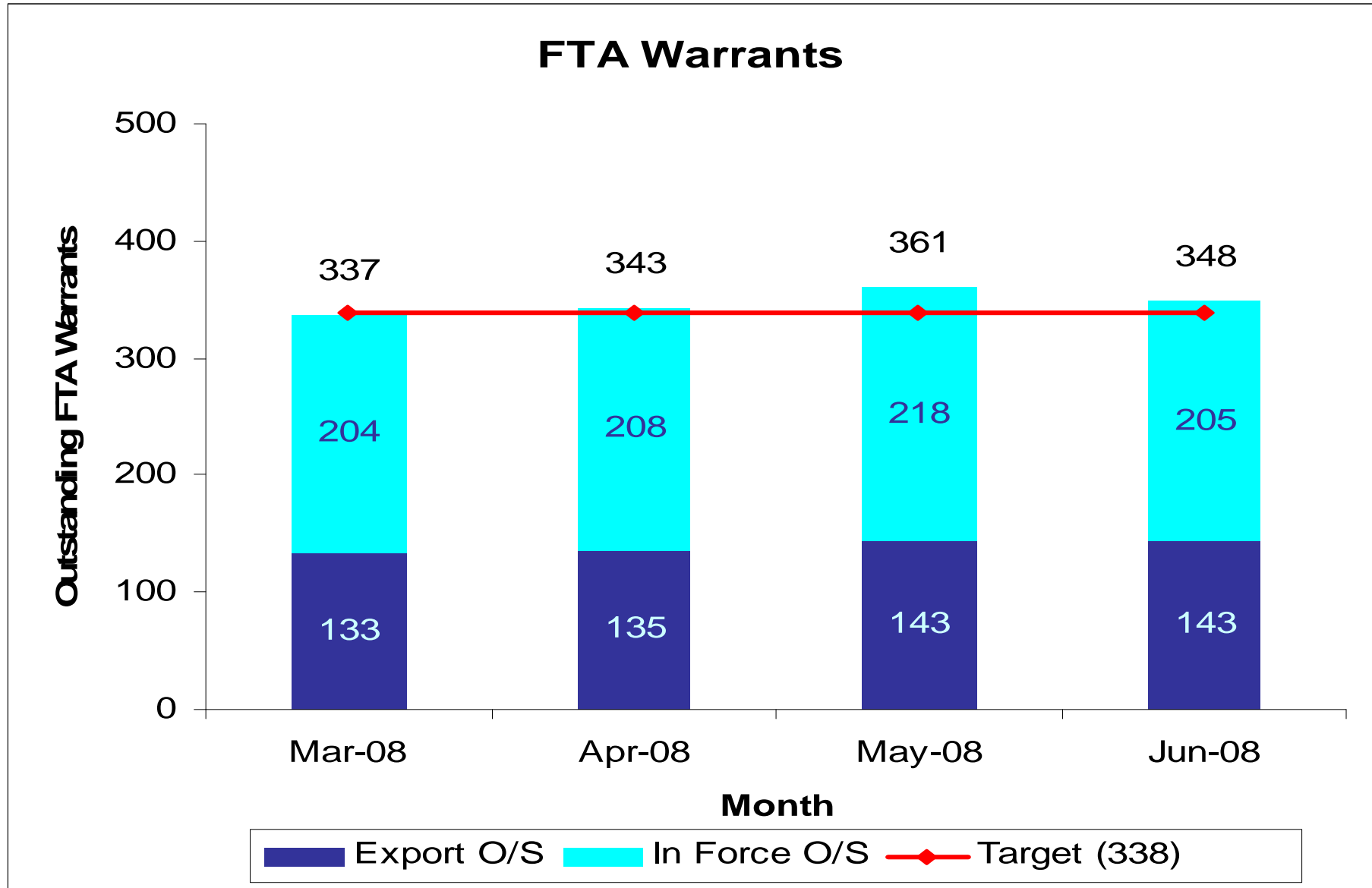
Prolific & Priority Offences – CJA Performance Summary June

Area	No. arrested offences	No. offenders arrested	No. Charged offences	No. offenders charged	No. discontinued offences	Cautions	TICs	Convictions	OBTJ	Days from Arrest to Conviction
East	45	20	33	16	7	0	0	22	22	57
Central	3	2	3	2	2	0	0	8	8	54
West	2	2	2	2	8	0	3	1	4	3
Total	50	24	38	20	17	0	3	31	34	53

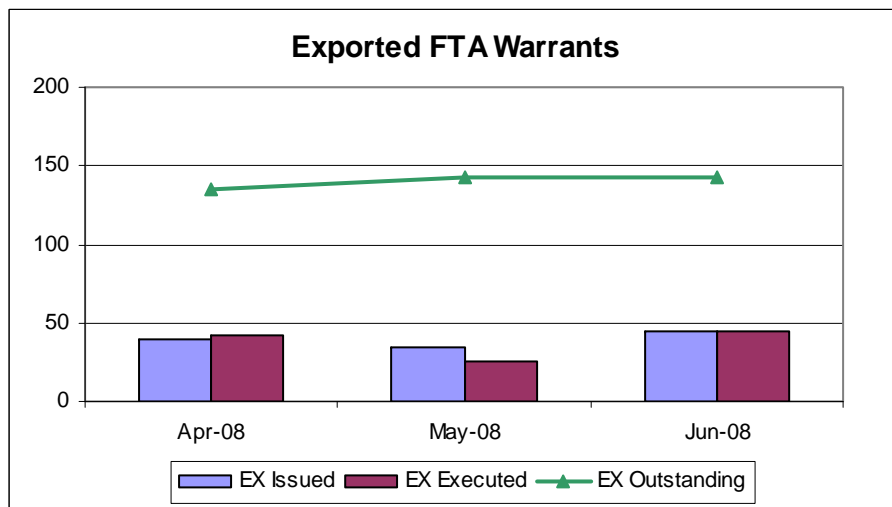
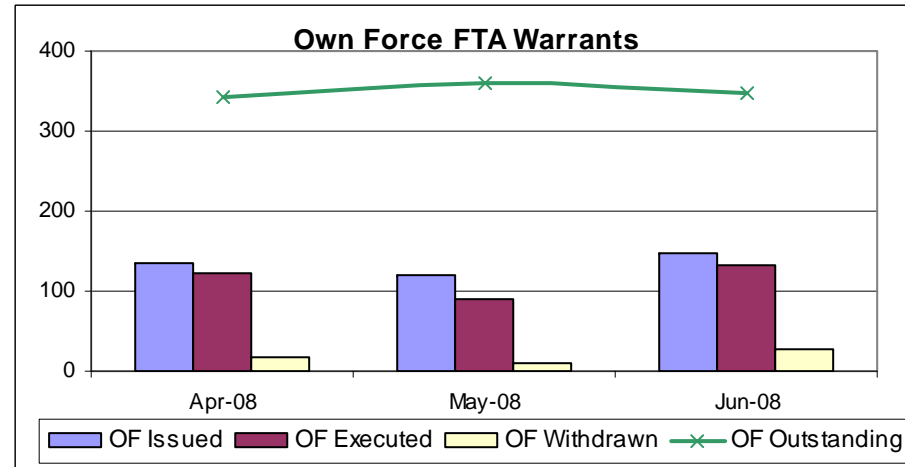
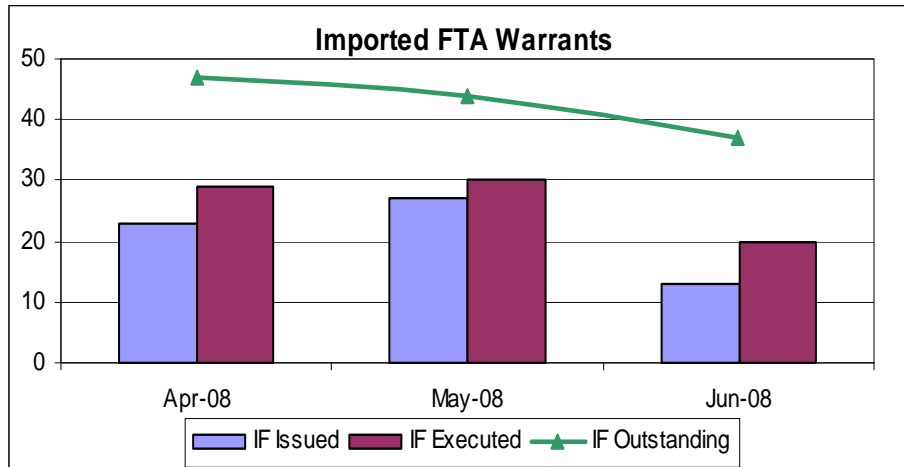
Source: JTRACK (CJS) – CJA Performance by BCU as at 13/07/08

Herts. PPO Offences - Arrest to Conviction (JTrack)





Source: Warrant's Monthly (Ops. Support) – Jun 2008



FTA WARRANTS	May 08	Jun 08
Imported Warrants Received	27	13
Imported Warrants Executed	30	20
Imported Warrants Outstanding	44	37
Warrants Issued in Force	119	148
Warrants Executed in Force	90	133
Warrants Withdrawn	11	28
Warrants Outstanding sent to other Forces	143	143

FTA Warrants		Target	Apr 08	May 08	Jun 08	% Target Variation
Central Measure	Execute 90% of PPO/PYO warrants in 7 days	90%	67% (4 / 6)	67% (4 / 6)	71% (5 / 7)	- 19 %
Central Measure	Execute 70% of Category A warrants in 14 days	70%	78% (7 / 9)	46% (6 / 13)	56% (10 / 18)	- 14%
Central Measure	Execute 70% of Category B warrants in 21 days	70%	70% (65 / 93)	58% (45 / 78)	52% (43 / 82)	- 21%
Central Measure	Execute 60% of Category C warrants in 28 days	60%	44% (14 / 32)	54% (15 / 28)	35% (17 / 48)	- 28%

Source: Warrant's Monthly (Ops. Support) - June

**Warrants
By Police
Area**

Local Data as at 04 July 08	Warrants				PPO/PYO Warrants	
	Outstanding Breach Warrants	Target for FTA Warrants	Outstanding FTA Warrants	% Against Target	PPO / PYO Warrants Currently O/S	% Executed within 7 days since 01/04/2006
Force	67	299	349	- 17%	3	65%
Eastern	29	110	144	- 31%	0	75%
Western	21	77	99	- 29%	3	40%
Central	17	112	106	+ 5%	0	67%

Source: Constabulary Daily Returns and Warrant's Monthly (Ops. Support) – June

Alcohol Diversion Scheme Statistics

Month	PNDs Issued	Non Herts resident	DD	Section 5	Attended course
August	18	3	6	12	6
September	33	10	12	21	5
October	29	10	13	16	5
November	31	6	12	19	6
December	52	12	20	31	4
January	31	5	11	20	4
February	26	4	15	11	3
March	26	9	13	13	5
April	66	8	42	24	3
May	96	18	27	69	10
June	63	7	24	35	13

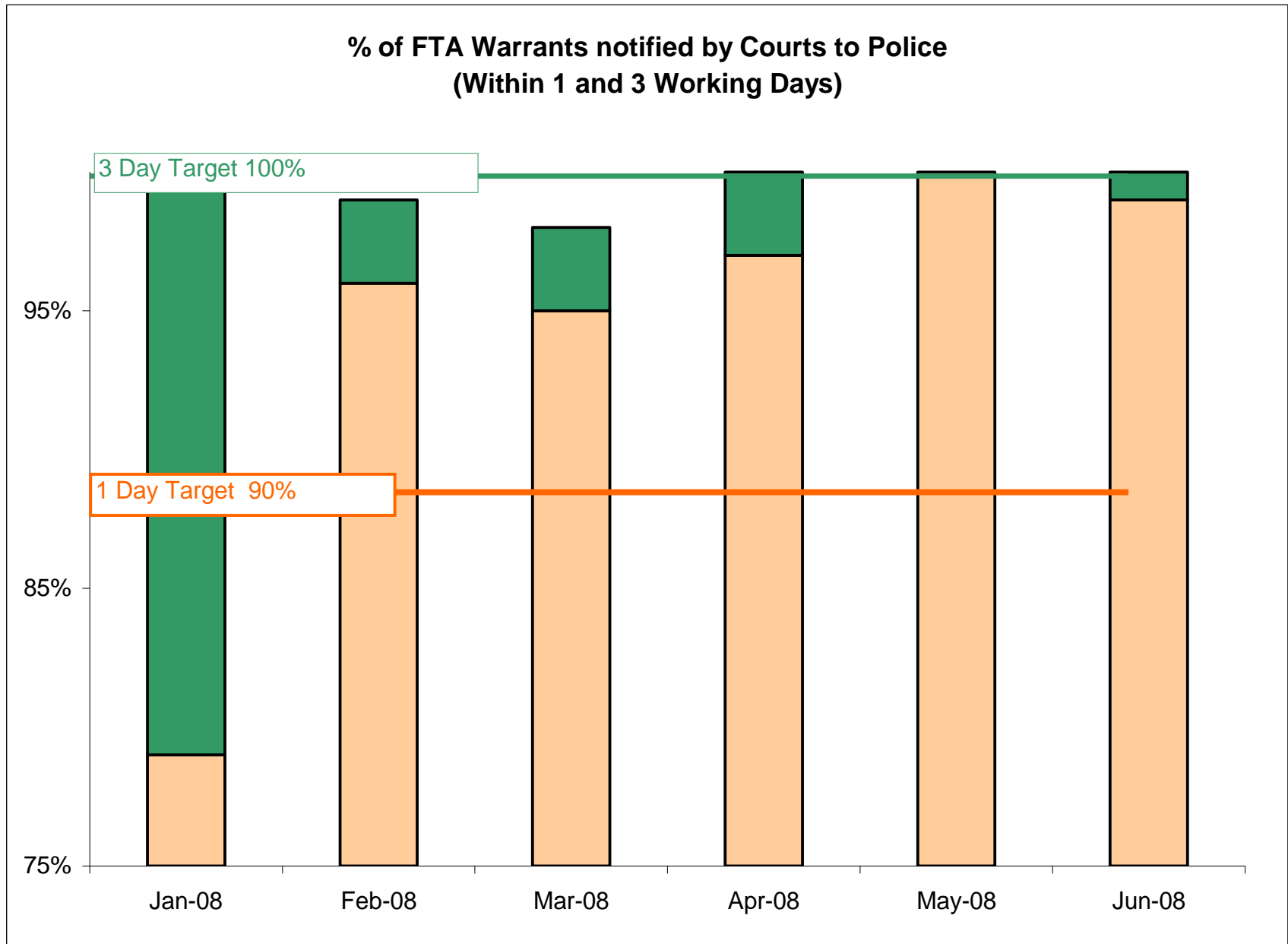
The attendance on the June course has greatly improved, with 17 booked on and attending.

Statutory Charging Data

This data indicates the number of times detainees were bailed when the CPS were not available to give advice

	Central	East	West	Force
Dec	8	3	11	22
Jan	4	11	7	22
Feb	1	5	3	9
Mar	5	5	5	15
Apr	2	1	4	7
May	2	1	4	7

Discussions are ongoing with area DCI's to provide some context behind each of these figures on a regular basis



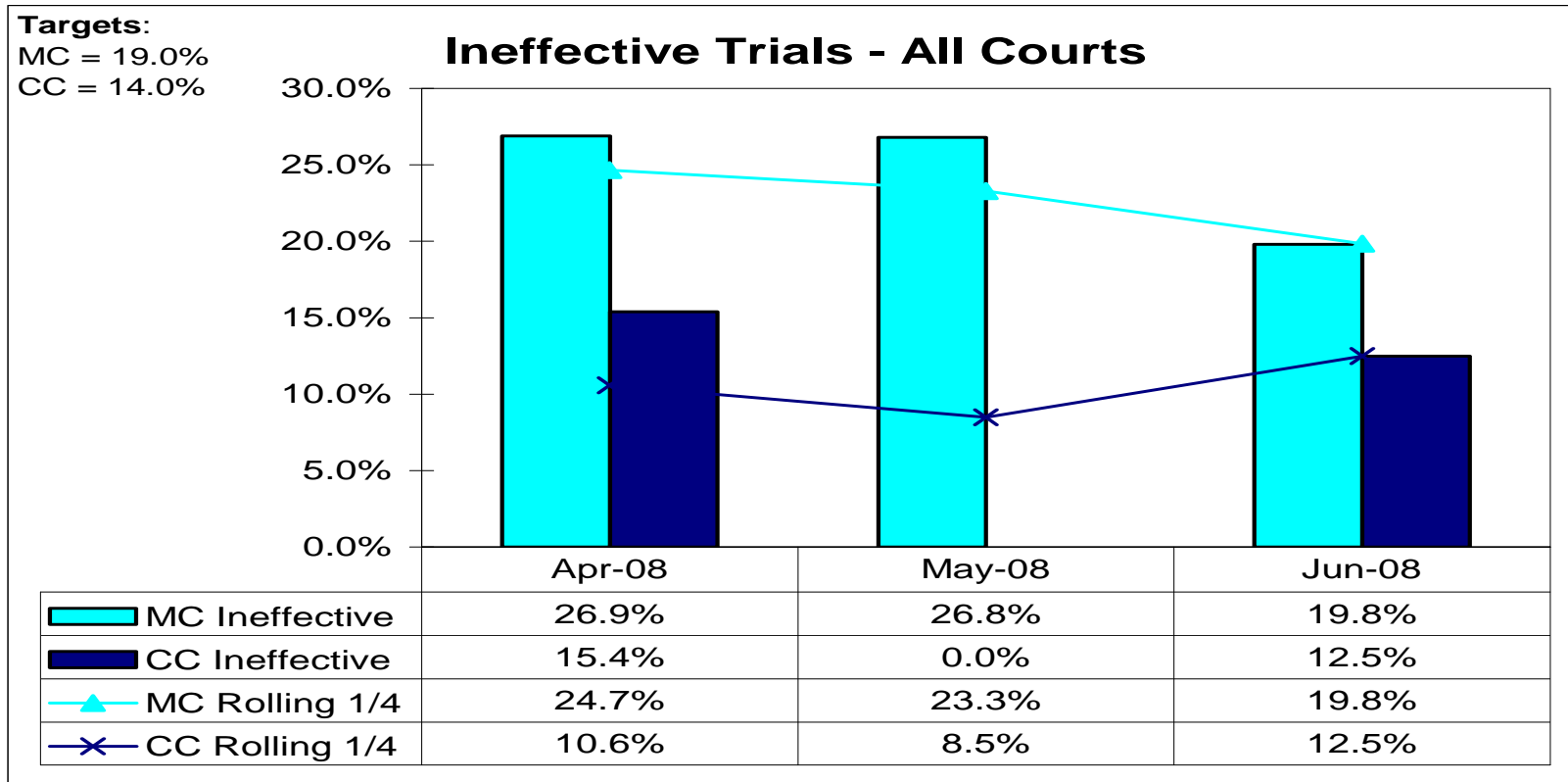
Source – FTA Court Warrant Report – June 08

Licence Recall Data – Nov 07 to Apr 08

Area	Standard						Standard (Total)			Emergency			Total			Probation	PRS	Police
	HDC ONLY			Non-HDC			No of Recalls	End to End Target No	End to end target %	No of Recalls	End to End Target No	End to end target %	No of Recalls	End to End Target No	End to end target %	% in Target	% in Target	% in Target
	No of Recalls	End to End Target No	End to end target %	No of Recalls	End to End Target No	End to end target %												
England & Wales	695	318	46%	4210	2552	61%	4905	2870	59%	1550	951	61%	6455	3821	59%	81%	81%	57%
Avon & Somerset	11	3	27%	109	50	46%	120	53	44%	38	25	66%	158	78	49%	96%	85%	44%
Bedfordshire	9	5	56%	36	22	61%	45	27	60%	20	13	65%	65	40	62%	95%	91%	61%
Cambridgeshire	5	4	80%	46	30	65%	51	34	67%	18	13	72%	69	47	68%	80%	91%	64%
Cheshire	14	8	57%	87	50	57%	101	58	57%	17	13	76%	118	71	60%	96%	72%	52%
Cleveland/Teesside	18	6	33%	72	52	72%	90	58	64%	37	26	70%	127	84	66%	95%	90%	62%
Cumbria	3	2	67%	35	27	77%	38	29	76%	15	15	100%	53	44	83%	87%	91%	79%
Derbyshire	16	11	69%	57	45	79%	73	56	77%	51	37	73%	124	93	75%	96%	89%	77%
Devon & Cornwall	5	1	20%	71	39	55%	76	40	53%	21	11	52%	97	51	53%	71%	82%	56%
Dorset	10	6	60%	62	33	53%	72	39	54%	6	4	67%	78	43	55%	89%	83%	50%
Durham & Darlington	15	8	53%	42	37	88%	57	45	79%	9	5	56%	66	50	76%	89%	91%	74%
Dyfed Powys	1	0	0%	24	16	67%	25	16	64%	5	3	60%	30	19	63%	97%	100%	63%
Essex	11	6	55%	59	36	61%	70	42	60%	31	19	61%	101	61	60%	78%	94%	59%
Gloucestershire	7	3	43%	37	20	54%	44	23	52%	18	11	61%	62	34	55%	82%	90%	62%
Greater Manchester	41	22	54%	324	199	61%	365	221	61%	166	87	52%	531	308	58%	91%	82%	58%
Gwent	5	2	40%	45	23	51%	50	25	50%	11	6	55%	61	31	51%	92%	88%	48%
Hampshire & IOW	14	7	50%	119	70	59%	133	77	58%	28	23	82%	161	100	62%	92%	79%	62%
Hertfordshire	3	2	67%	47	22	47%	50	24	48%	9	5	56%	59	29	49%	86%	90%	51%
Humberside	15	7	47%	118	83	70%	133	90	68%	30	21	70%	163	111	68%	91%	87%	70%
Kent	13	4	31%	74	49	66%	87	53	61%	47	30	64%	134	83	62%	92%	84%	59%
Lancashire	30	16	53%	110	72	65%	140	88	63%	23	16	70%	163	104	64%	82%	78%	63%
Leicestershire	16	10	63%	74	46	62%	90	56	62%	31	14	45%	121	70	58%	86%	85%	54%
Lincolnshire	9	4	44%	30	16	53%	39	20	51%	20	14	70%	59	34	58%	90%	85%	61%
London	109	43	39%	662	356	54%	771	399	52%	169	93	55%	940	492	52%	65%	87%	56%
Merseyside	29	11	38%	188	107	57%	217	118	54%	29	16	55%	246	134	54%	82%	80%	55%
Norfolk	5	3	60%	49	33	67%	54	36	67%	15	9	60%	69	45	65%	96%	97%	64%
North Wales	3	1	33%	33	22	67%	36	23	64%	14	8	57%	50	31	62%	80%	94%	64%
North Yorkshire	3	3	100%	48	36	75%	51	39	76%	15	12	80%	66	51	77%	97%	94%	74%
Northamptonshire	17	10	59%	24	11	46%	41	21	51%	37	24	65%	78	45	58%	87%	94%	53%
Northumbria	23	7	30%	93	68	73%	116	75	65%	56	36	64%	172	111	65%	91%	90%	63%
Nottinghamshire	23	13	57%	150	76	51%	173	89	51%	43	31	72%	216	120	56%	88%	78%	58%
South Wales	24	9	38%	154	85	55%	178	94	53%	36	19	53%	214	113	53%	75%	88%	54%
South Yorkshire	27	12	44%	173	113	65%	200	125	63%	36	20	56%	236	145	61%	89%	89%	59%
Staffordshire	16	10	63%	70	47	67%	86	57	66%	55	44	80%	141	101	72%	91%	94%	61%
Suffolk	4	1	25%	41	26	63%	45	27	60%	18	11	61%	63	38	60%	62%	97%	56%
Surrey	3	3	100%	37	23	62%	40	26	65%	8	5	63%	48	31	65%	94%	96%	58%
Sussex	10	6	60%	82	48	59%	92	54	59%	34	17	50%	126	71	56%	88%	87%	60%
Thames Valley	20	7	35%	78	45	58%	98	52	53%	81	35	43%	179	87	49%	86%	96%	45%
Warwickshire	5	4	80%	17	10	59%	22	14	64%	34	18	53%	56	32	57%	86%	93%	52%
West Mercia	7	3	43%	67	42	63%	74	45	61%	15	5	33%	89	50	56%	76%	82%	58%
West Midlands	56	24	43%	299	176	59%	355	200	56%	143	96	67%	498	296	59%	77%	86%	59%
West Yorkshire	42	13	31%	268	177	66%	310	190	61%	57	35	61%	367	225	61%	93%	90%	59%
Wiltshire	3	0	0%	28	19	68%	31	19	61%	7	6	86%	38	25	66%	90%	89%	66%

Source: OCJR Returns –Nov 07 to Apr 08

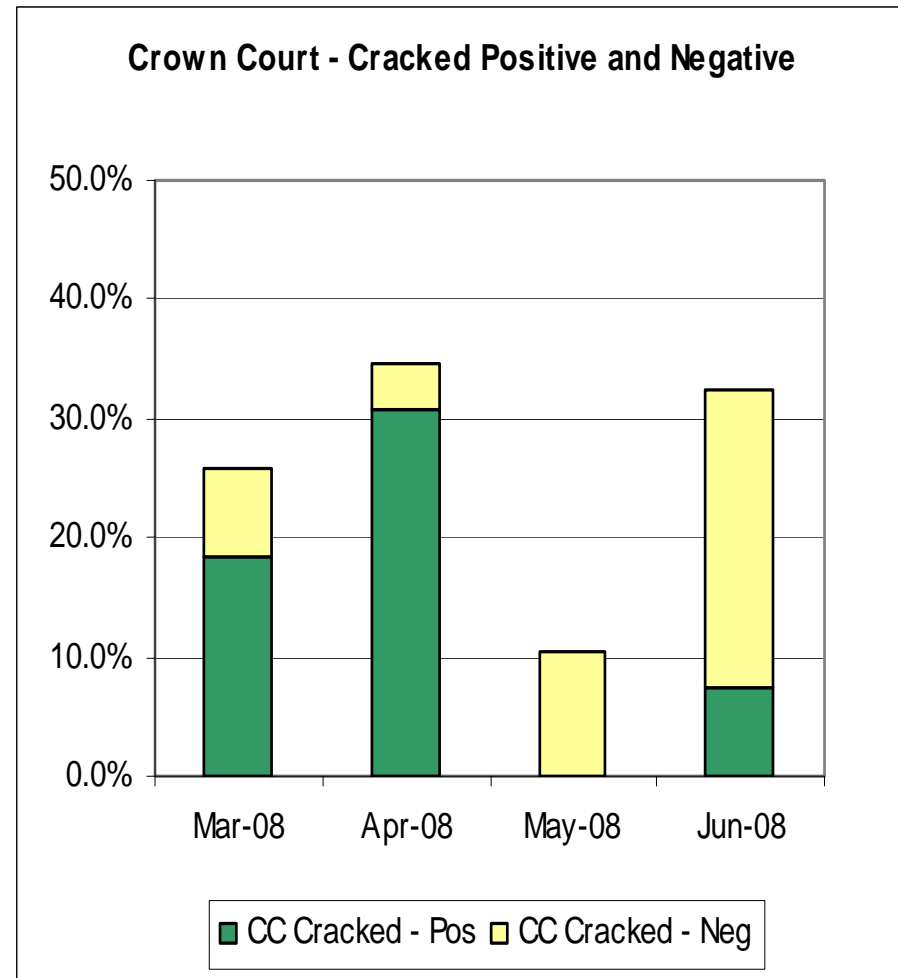
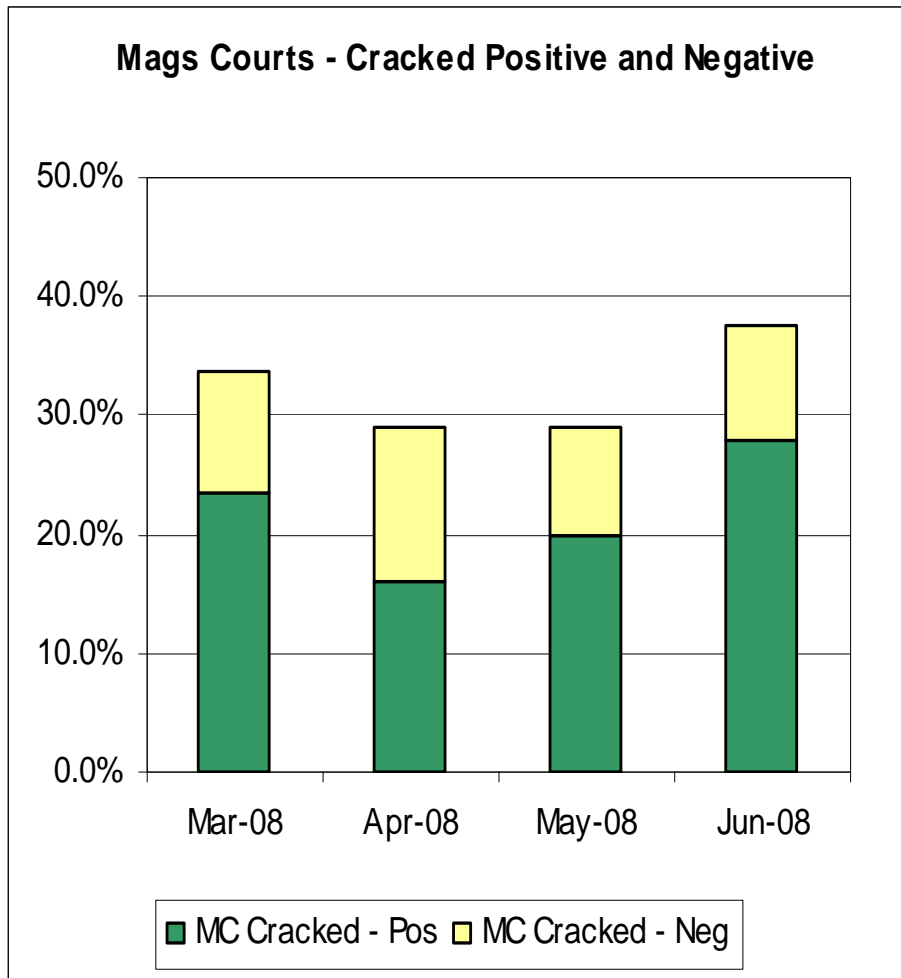
TRIAL EFFECTIVENESS – INEFFECTIVE TRIALS



MC Total Listings	454	362	368
MC Total Ineffective	122	97	73
CC Total Listings	26	19	40
CC Total Ineffective	4	0	5

Source: Court Returns – June 2008

TRIAL EFFECTIVENESS – CRACKED TRIALS



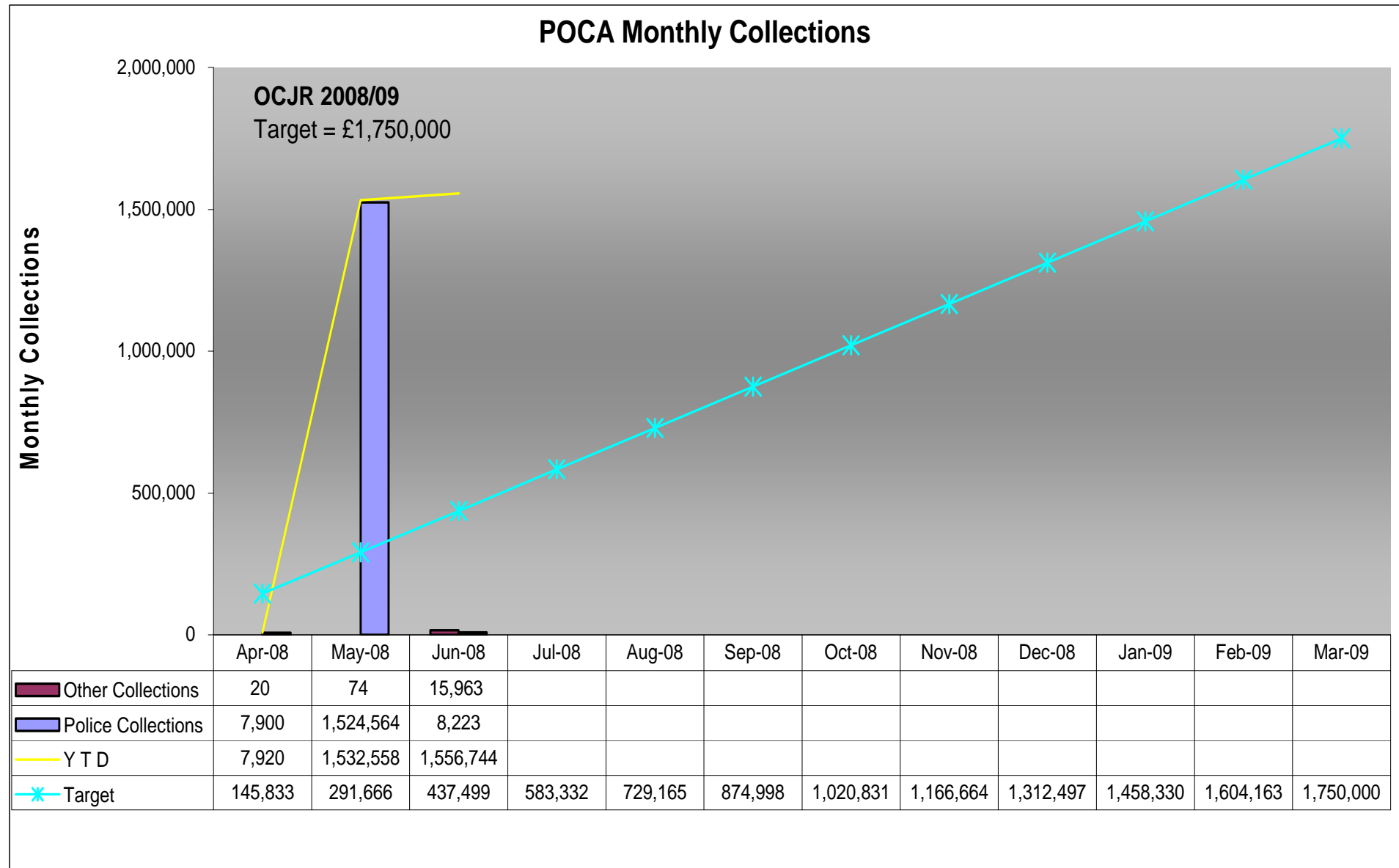
Source: Court Returns – June

NOTE:

A “Positive” cracked trial is mainly due to the defendant offering an acceptable but late Guilty Plea

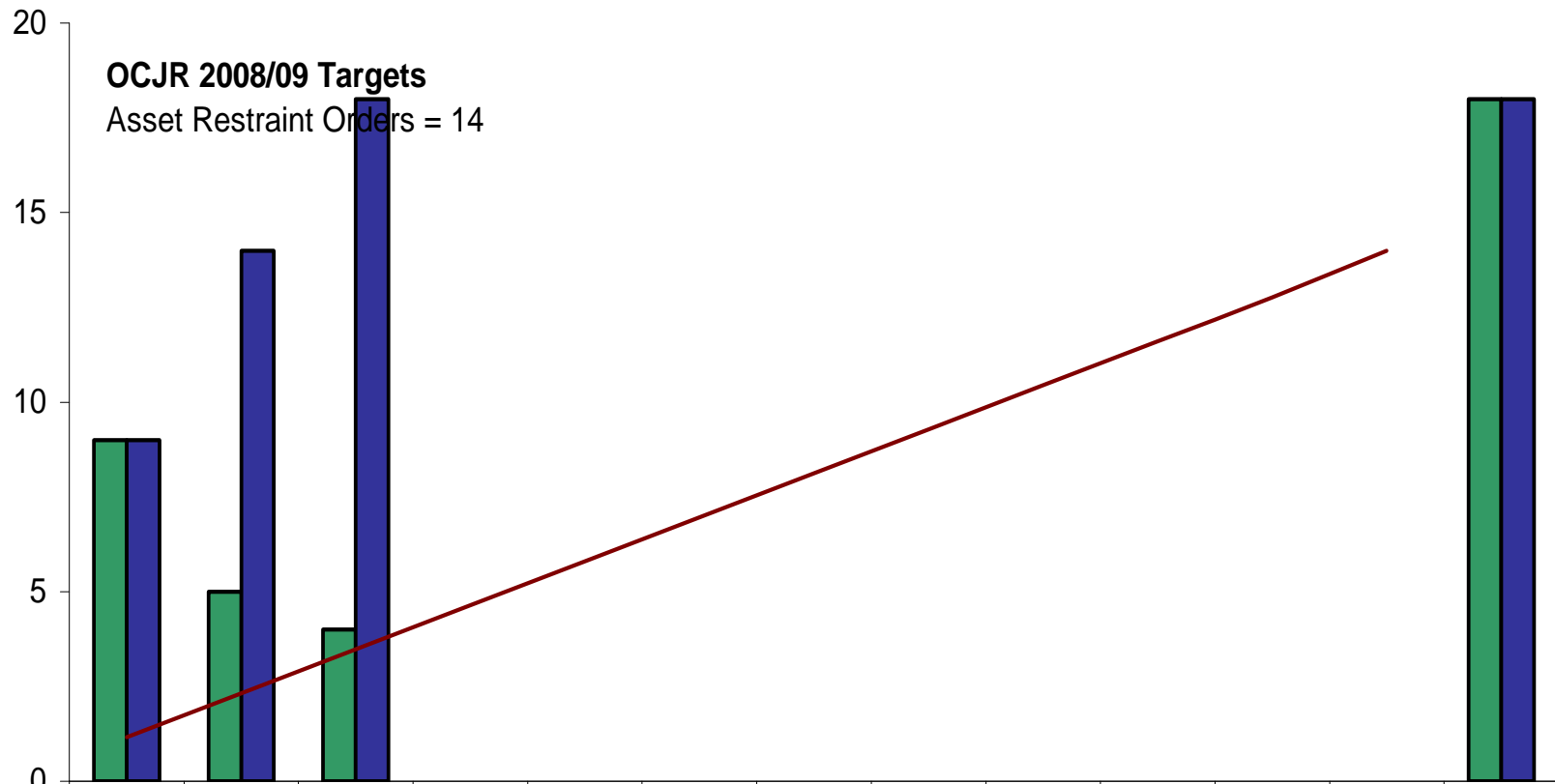
A “Negative” cracked trial is mainly due to the prosecution being unable to proceed, generally due to witness absence

POCA Summary Charts



Enforcement Performance Report (OCJR) –Jun 2008

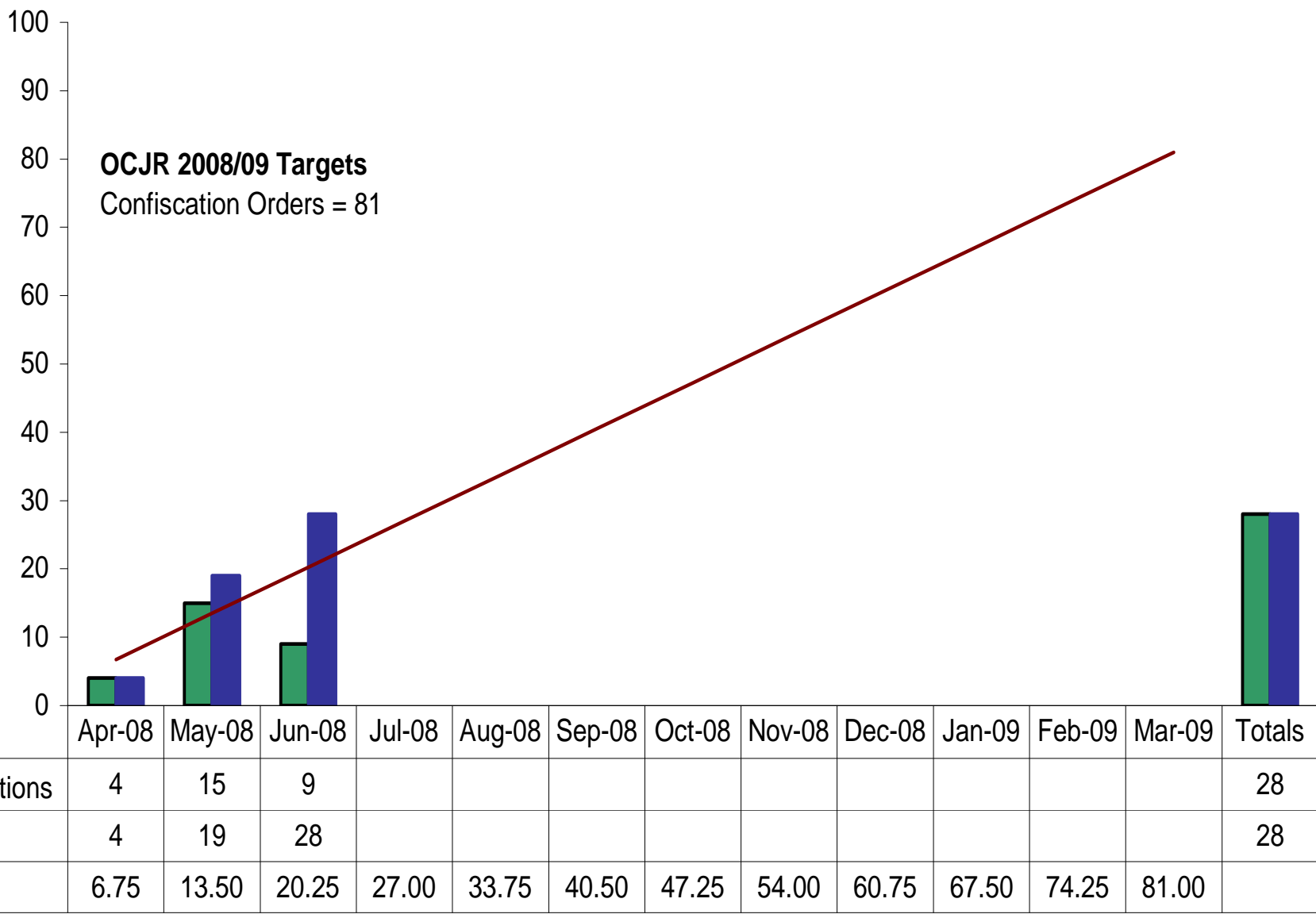
OCJR - Number of Asset Restraint Orders



	Apr-08	May-08	Jun-08	Jul-08	Aug-08	Sep-08	Oct-08	Nov-08	Dec-08	Jan-09	Feb-09	Mar-09	Totals
Restraint Orders	9	5	4										18
YTD	9	14	18										18
OCJR Target	1.2	2.3	3.5	4.6	5.8	7.0	8.1	9.3	10.4	11.6	12.8	14.0	

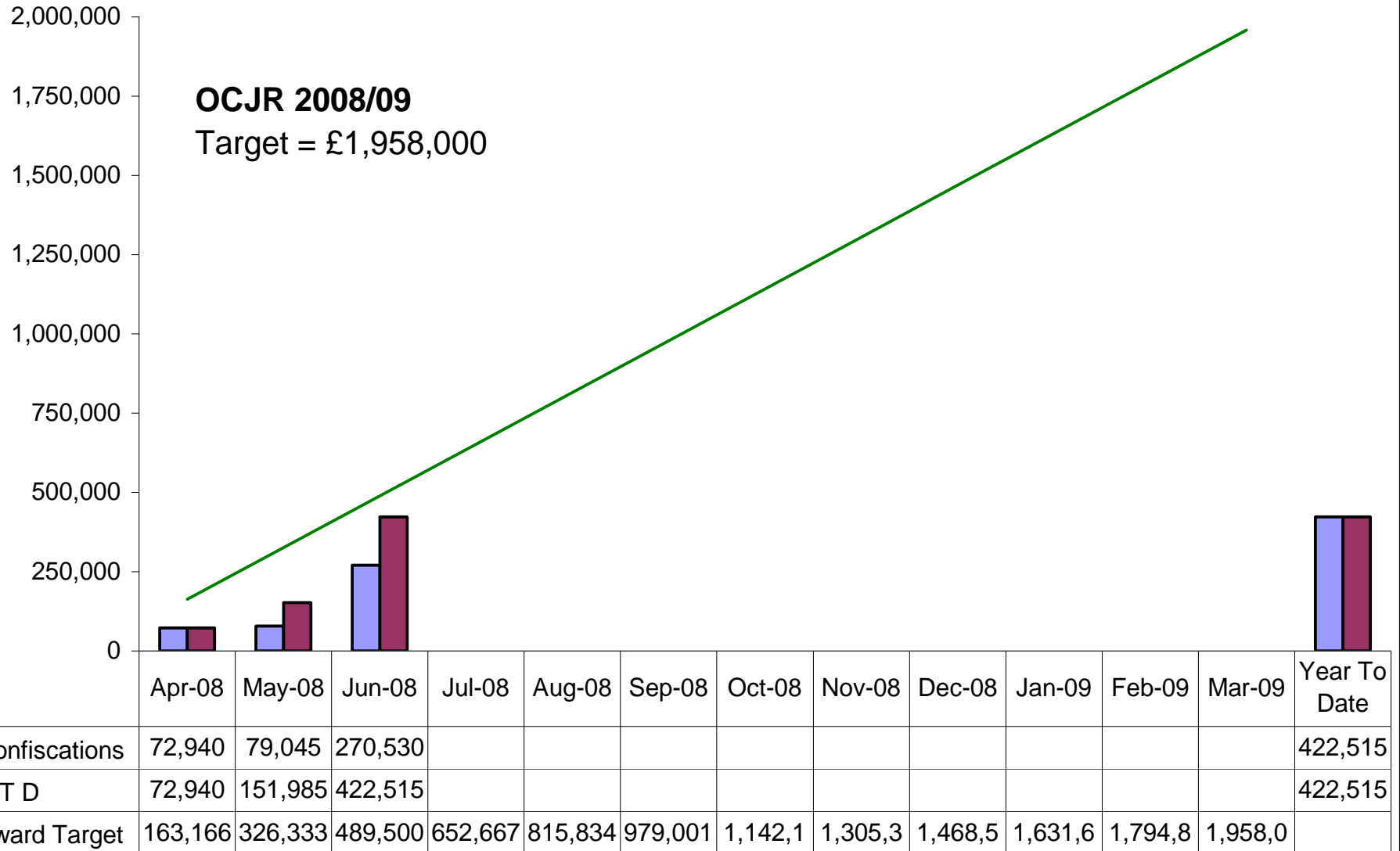
Source: FIU Spreadsheet – Jun 2008

OCJR - Number of Confiscation Orders



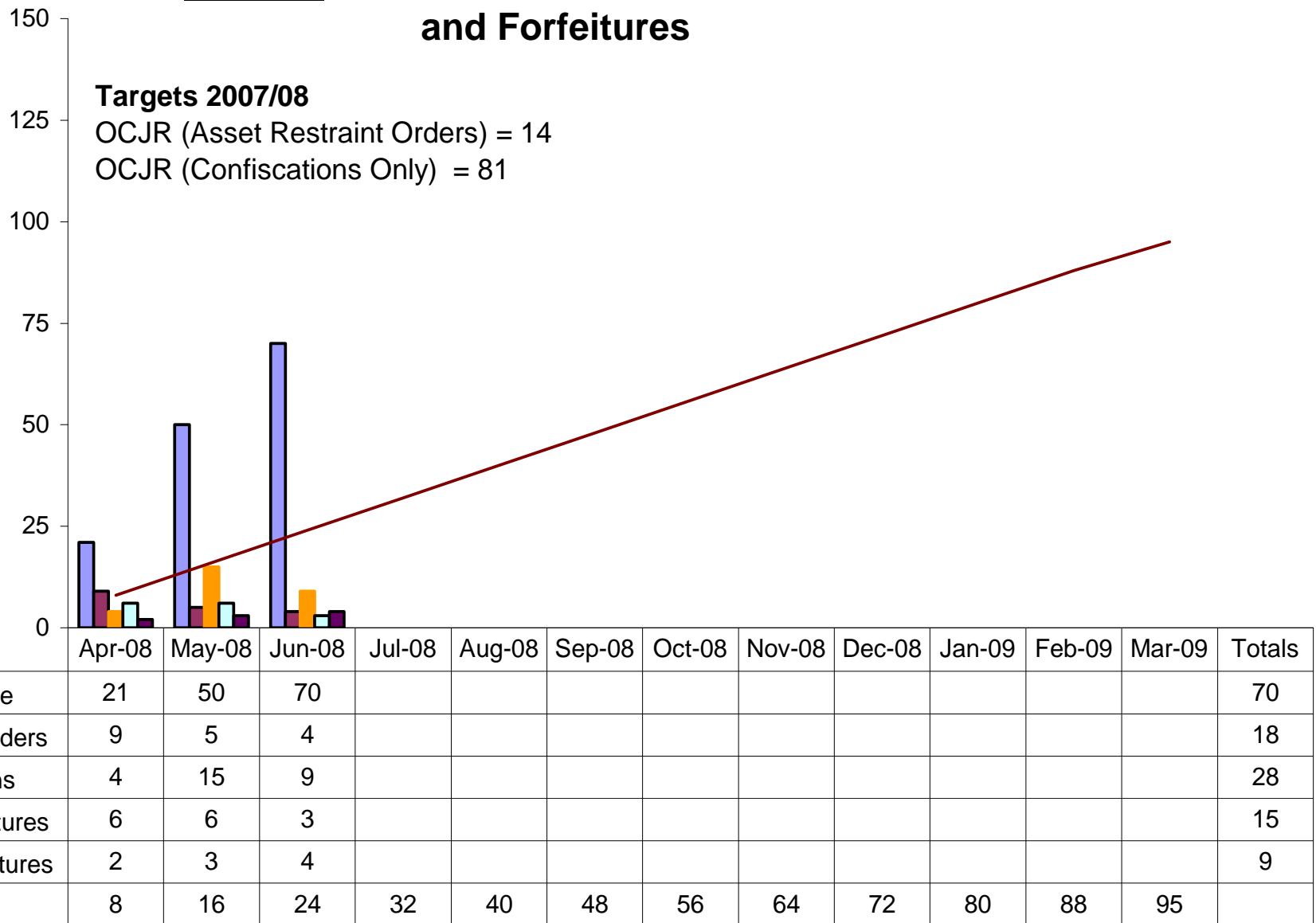
Source: FIU Spreadsheet – Jun 2008

OCJR - Value of Confiscation Orders



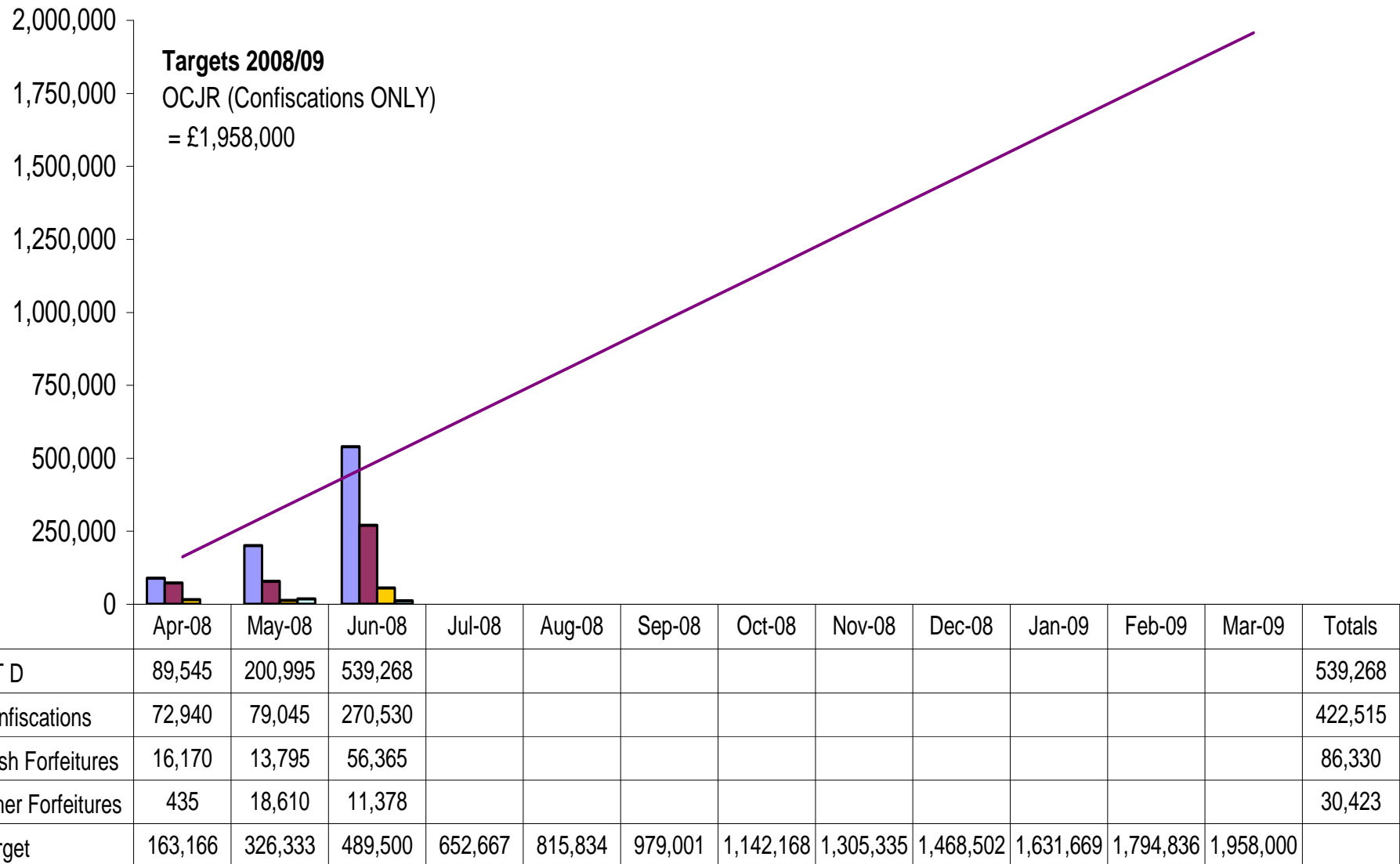
Source: FIU Spreadsheet –Jun 2008

Number of Restraint Orders, Confiscation, and Forfeitures



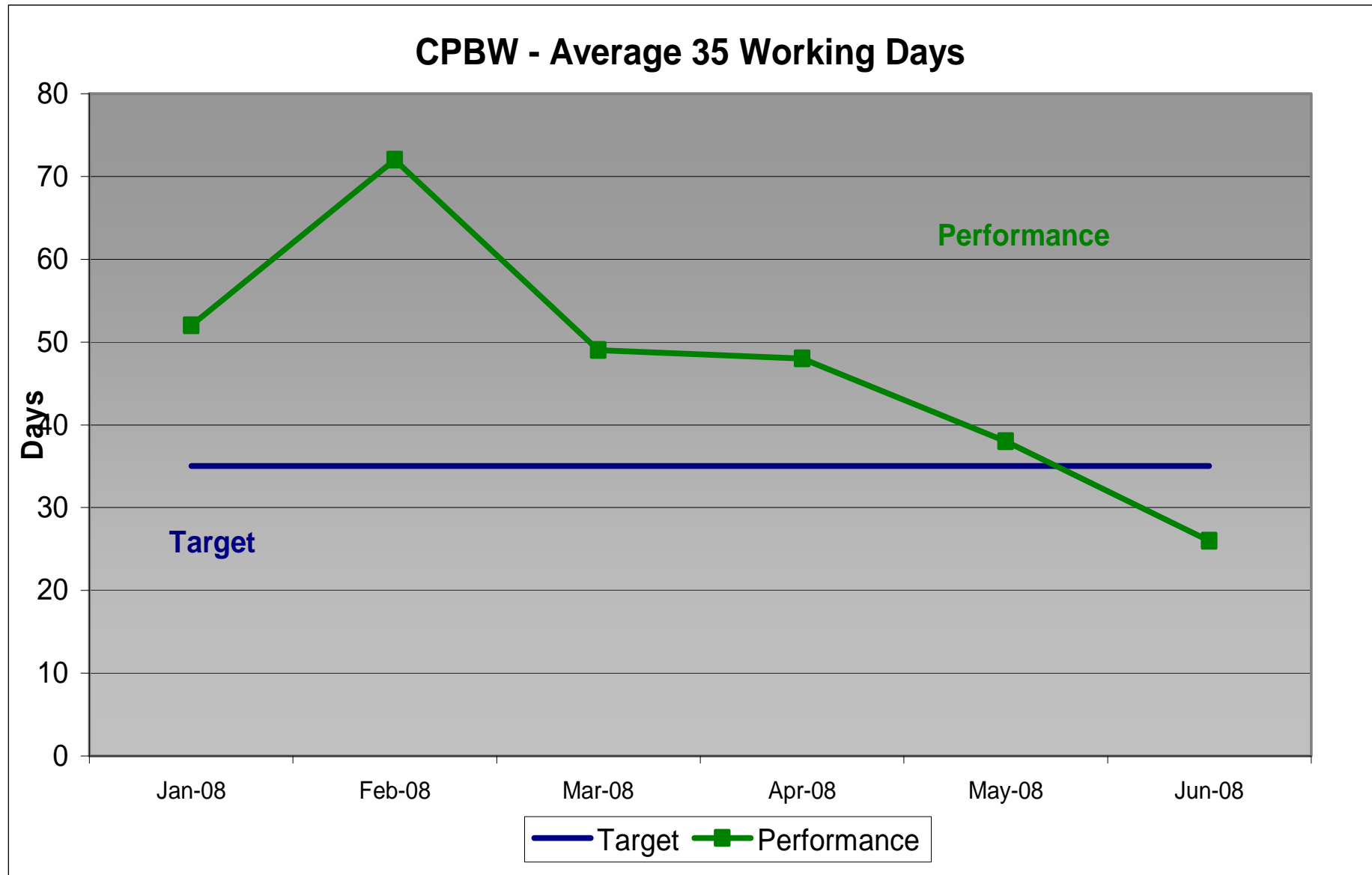
Source: FIU Spreadsheet – Jun 2008

Value of Confiscation Orders and Forfeitures



Source: FIU Spreadsheet – Jun 2008

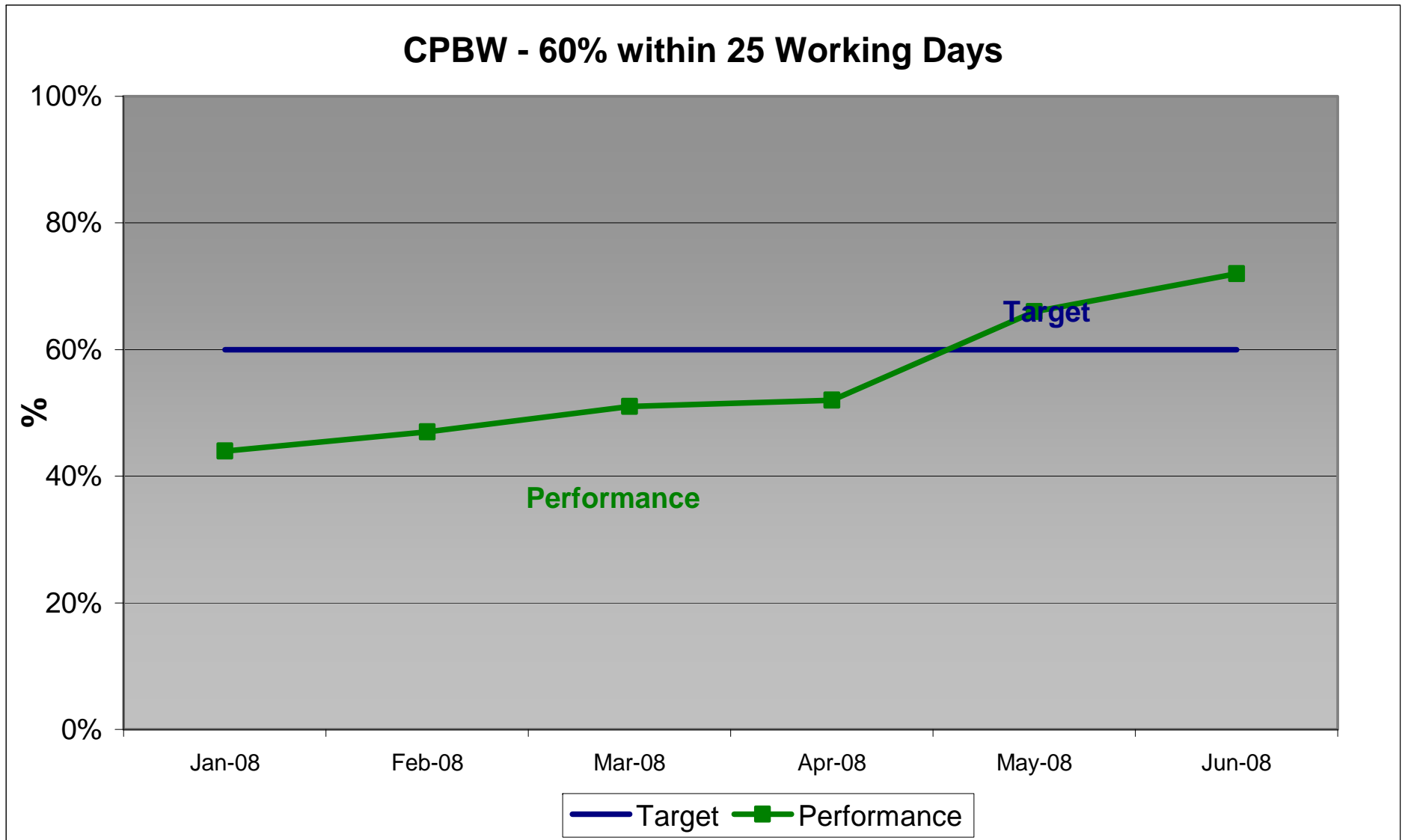
Community Penalty Enforcements



Source: HMCS – Comet MI – Jun 2008

Community Penalty Enforcements

CPBW - 60% within 25 Working Days



Source: HMCS – Comet MI – Jun 2008

Public Confidence – BCS data to Year Ending Dec '07

% Of Very or Fairly Confident	Objective	Baseline Y/E Mar 03	Y/E Dec 06	Y/E Mar 07	Y/E Jun 07	Y/E Sep 07	Y/E Dec 07	Region Average	National Average
Victims & Witness Satisfaction	Meet the needs of Victims	32.5	36.7	37.3	37.3	37.8	38.4	37.6	35.6
	Meet the needs of Witnesses Baseline Y/E March 04 (Target 70%)	64.3	71.9	72.7	73.1	71.9	73.3	72.3	79.8
Community Engagement	Respect the rights of those accused of crime	77.0	77.0	81.7	80.4	80.3	81.0	82.6	68.5
	Effective in dealing with young people accused of crime	23.3	27.1	25.7	24.1	24.1	25.1	25.1	24.4
Increasing Public Confidence in Bringing Offenders to Justice	Effective in reducing crime	35.2	38.2	36.9	37.2	37.3	37.3	38.6	37.5
	Effective in bringing offenders to justice (Target 48%)	45.7	43.6	44.6	45.0	44.6	47.3	47.0	44.0
	Deal with cases promptly and efficiently	38.8	40.2	40.5	42.0	41.1	41.7	44.5	41.7

Source: CJS/Gov Quarterly Confidence Report

Red Significantly off target (5%>pts)

Amber Just off target (5% =<pts)

Green On or exceeding target

- All 7 of our measures are above our March '03 Baseline.
- On the key measure of 'Effective in Bringing Offenders to Justice' the Dec '07 figure shows a significant increase for Herts. Up from 44.6 up to 47.3 and places Herts as joint 7th in the national table. This puts us just 0.7% below target.
- 6 of the 7 measures show an increase on the previous quarters' figures, whilst 1 is equal.
- 4 of our 7 measures are above the National Average, with 1 equal and 2 below.
- 3 of our 7 measures are above the Region average, with 1 equal and 3 below.