



HERTFORDSHIRE CRIMINAL JUSTICE BOARD

PERFORMANCE REPORT

December 2008

Prepared By:
Glen Price,
Performance Officer
Hertfordshire Criminal Justice Board

Circulation:- Board Members; Area Delivery Groups and Performance Advisor (OCJR).

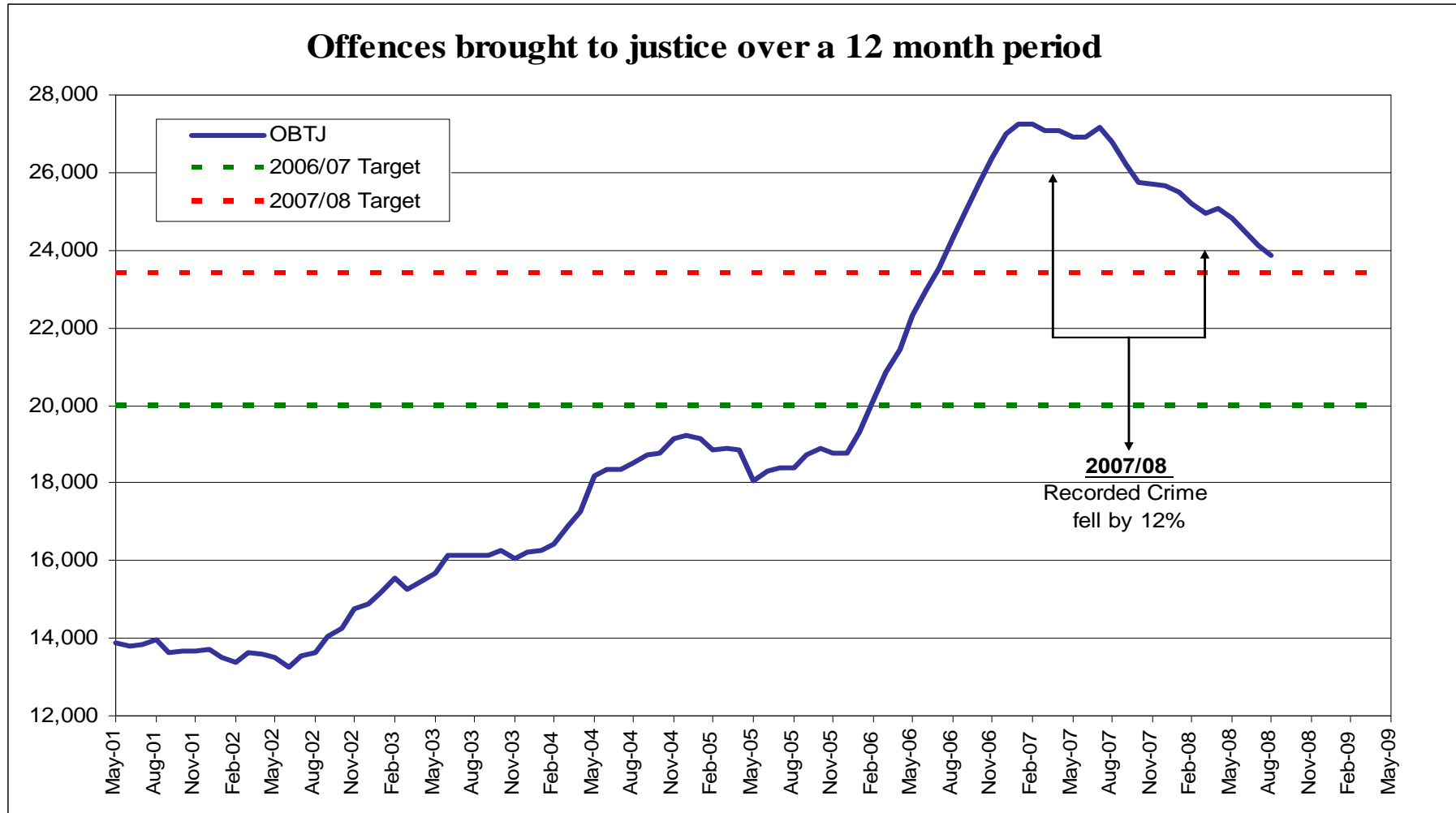
Report Key: **Red** - Significantly off target (5%>pts) **Amber** - Just off target (5% =<pts) **Green** - On or exceeding target

Index

Page No	Subject	Contents	Last Update
4	OBTJ	12 monthly Rolling	Aug '08
5		By Disposal Type (Numbers)	Nov '08
6		By Disposal Type (Percentages)	Oct '08
7		By Category	Aug/Nov '08
8		Summary of each Area's latest rolling annual data	Jun/Jul '08
9		Rolling Annual Rates by Seriousness – National	Aug '08
10		Rolling Annual Rates by Seriousness – MSF Area Summaries	Aug '08
11		Rates by Seriousness – Area Summary	Aug '08
11	Sanction Detection Rates	MSF Area Summaries	Sep '08
	Recorded Crime	Recorded Crime per 1000 (Population/Household) – Rolling 12 months	Sep '08
12	OBTJ	Rate by Seriousness – Area Detail	Aug '08
13	Seriousness	List of Offences by Seriousness	n/a
14	Statutory Charging	Total Arrests and Statutory Charge Referrals (Magistrates Courts)	Nov '08
15		Referrals by “Last Decision Made” (Magistrates Courts)	Oct '08
16		Outcomes for Defendants Subject to Pre-Charge Decisions (Magistrates Courts)	Nov '08
17	Convictions	Area figures from January 2007	Oct '08
18		Rates in Magistrates Courts from January 2007	Nov '08
19		Rates for Magistrates Courts – National for current month	Nov '08
20	Attrition Rates	Area figures from January 2007 - Magistrates Courts only	Nov '08
21		Rates for Magistrates Courts – National for current month	Nov '08
22	Guilty Pleas	Area figures from January 2007 - Magistrates Courts only	Nov '08
23		Rates for Magistrates Courts – National for current month	Nov '08
24	Discontinuances	Rates for Magistrates Courts from January 2007	Nov '08
25		Rates for Magistrates Courts – National for current month	Nov '08
26	PND's	Crime and Non-Crime (Charts and Figures) rolling 12 months	Aug '08
27	Alcohol Diversion Scheme	Rolling 12 month statistics	Oct '08
		PND's (Crime) – Reasons for Cancellations rolling 6 months	Sep '08
28	CJ-SSS	Area Summary Report	Nov '08
29		Central Herts Magistrates Courts – Detail	Nov '08
30		East Herts Magistrates Courts - Detail	Nov '08
31		North Herts Magistrates Courts – Detail	Nov '08
32		West Herts Magistrates Courts - Detail	Nov '08
33	Conditional Cautions	Number Administered – National for current month	Nov '08
34	PPO's	Arrests within Most Similar Forces – Year to Date	Oct '08
		Offences by BCU	Oct '08
35		Arrest to Completion Times	Oct '08

Page No	Subject	Contents	Last Update
36	FTA Warrants	Current Number Outstanding – Broken down to Exported and In-Force	Nov '08
37		Number Issued, Executed, Outstanding by In-Force, Imported and Exported	Nov '08
		Performance figures for the Execution of Category A, B, C warrants	Nov '08
38		Warrants by Police Area – Breach, FTA, PPO and PYO	Nov '08
	Licence Recall	Unlawfully at Large	29 Dec '08
39		Area performance data for rolling 6 months – Emergency Recalls	Oct '08
		Area performance data for rolling 6 months – Standard Recalls	Oct '08
40		National performance data for rolling 6 months – All Recalls	Aug '08
41	Trial Effectiveness	Ineffective Trials – All Courts	Nov '08
42		Cracked Trials (Positive and Negative Breakdown) – All Courts	Nov '08
43	POCA	Monthly Collections – Year to Date	Oct '08
44		Number of Asset restraint Orders – Year to Date	Oct '08
45		Number of Confiscation Orders – Year to Date	Oct '08
46		Value of Confiscation Orders – Year to Date	Oct '08
47		Number of Restraint Orders, Confiscations and Forfeitures	Oct '08
48		Value of Confiscation Orders and Forfeitures	Oct '08
49	Community Penalty Enforcements	Number Actioned within an Average of 35 days	Nov '08
50		60% Actioned within 25 Working Days	Nov '08
51	Public Confidence	British Crime Survey Quarterly Returns	Mar '08
52		PSA24 – Effective / Fairness baseline figures	Mar '08

NTJG - 12 Month Rolling OBTJ to August 2008

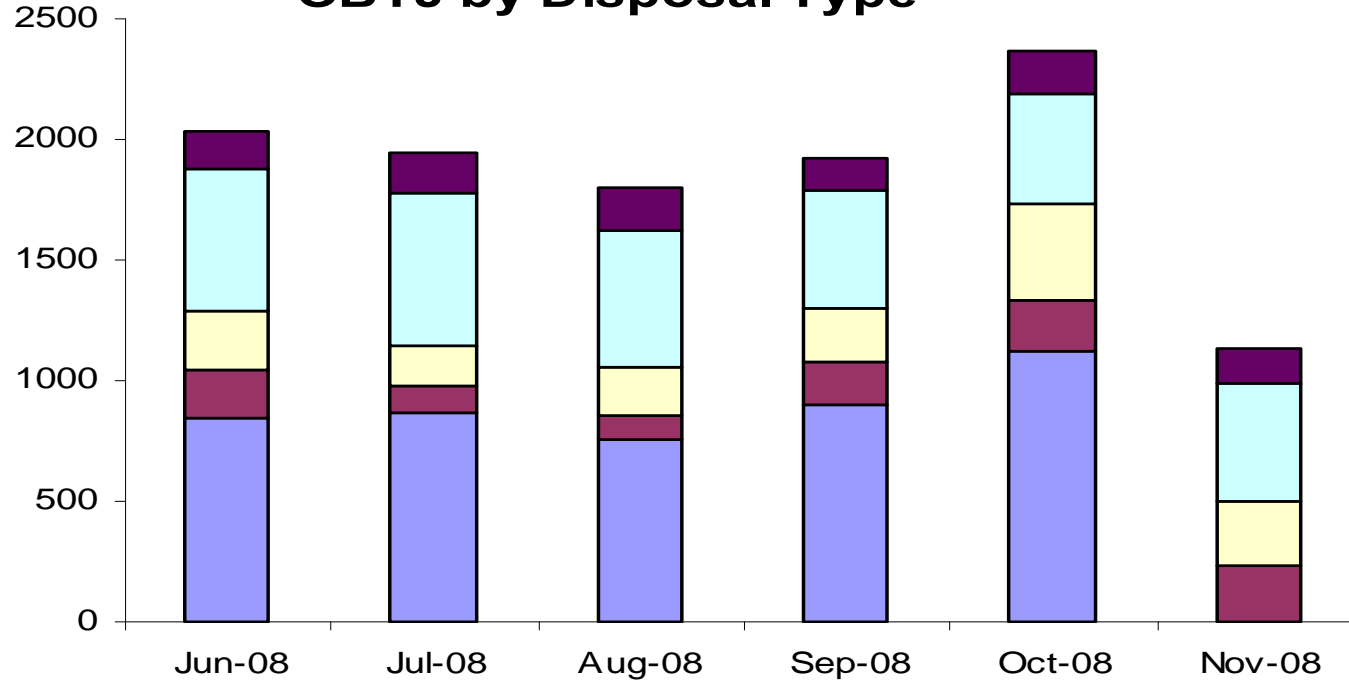


Hertfordshire Baseline (2001/02)	Target 2008/09	Actual to latest month	Performance vs. baseline	Performance vs. target
13,617	26,737	23,873 (August 2008)	+ 75.3 %	- 10.7%

Source: Justice Gap Action Team (JGAT - Home Office) Performance Report for October 2008

The provisional OBTJ figure for the month of September 2008 is 1,794. This indicates a decrease of 49 when compared to 1,843 for September 2007 and provides a predicted total for September 2008 of 23,824.

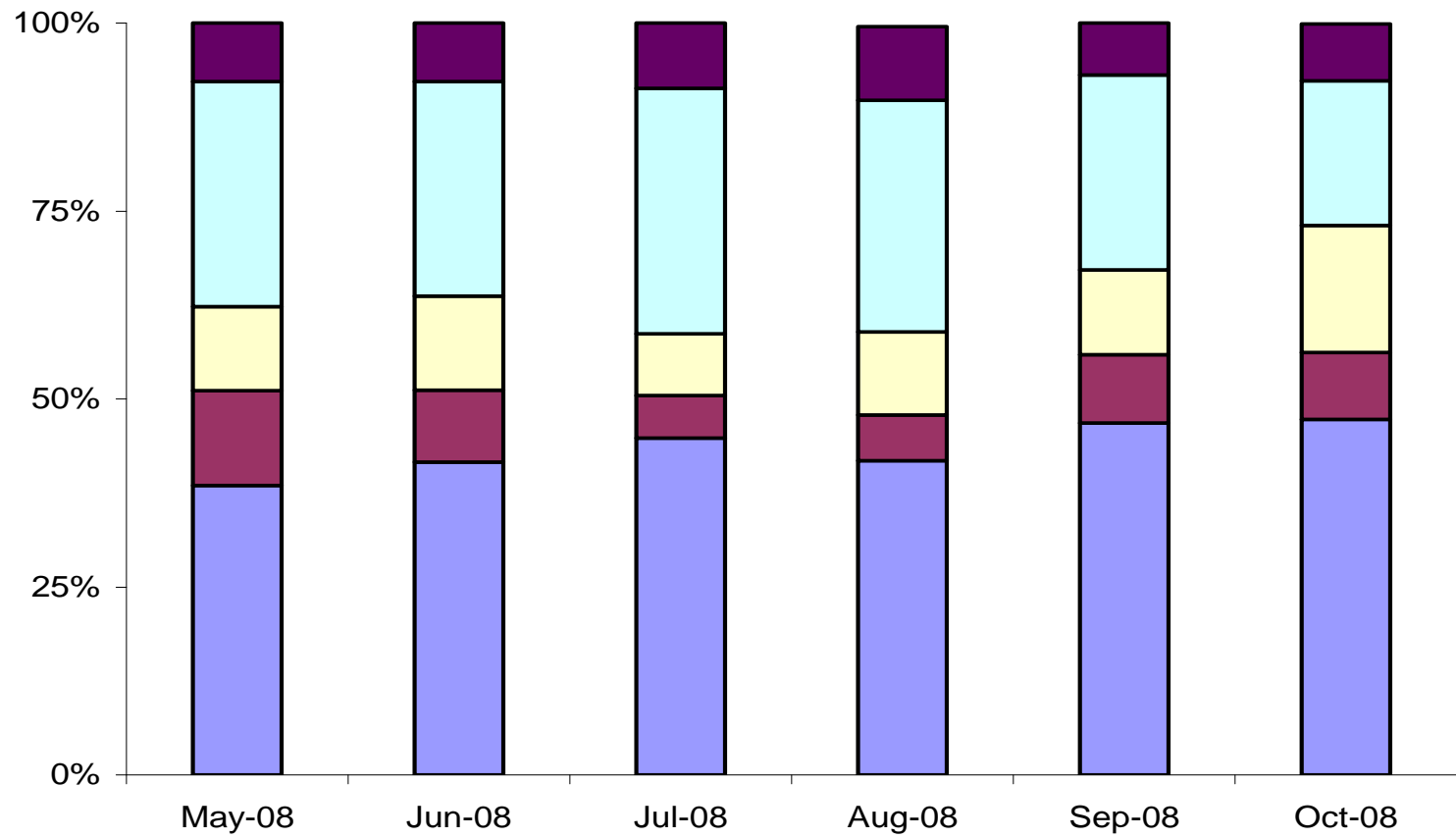
OBTJ by Disposal Type



	Jun-08	Jul-08	Aug-08	Sep-08	Oct-08	Nov-08
Total OBTJ	2031	1944	1798	1927	2370	1133
■ Formal Warnings	158	170	176	133	181	139
□ Cautions	579	633	563	499	456	496
■ TIC's	254	159	198	218	401	268
■ PNDs	195	111	109	175	211	230
■ Convictions	845	871	752	902	1121	

Source: OBTJ Data – OIDD Nov 2008 and OCJR Aug 2008

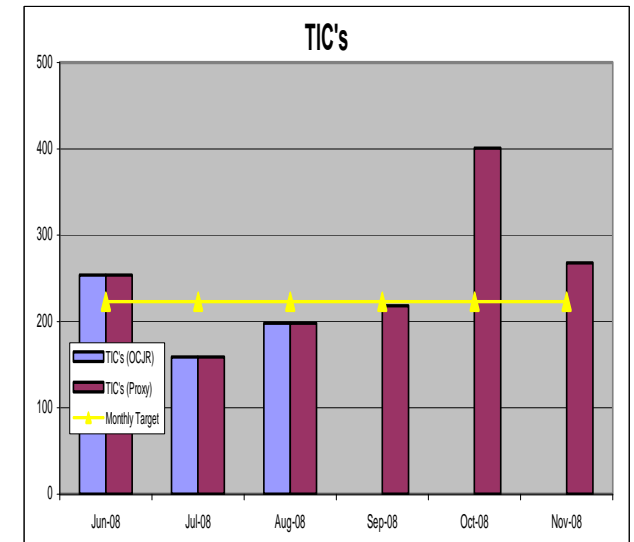
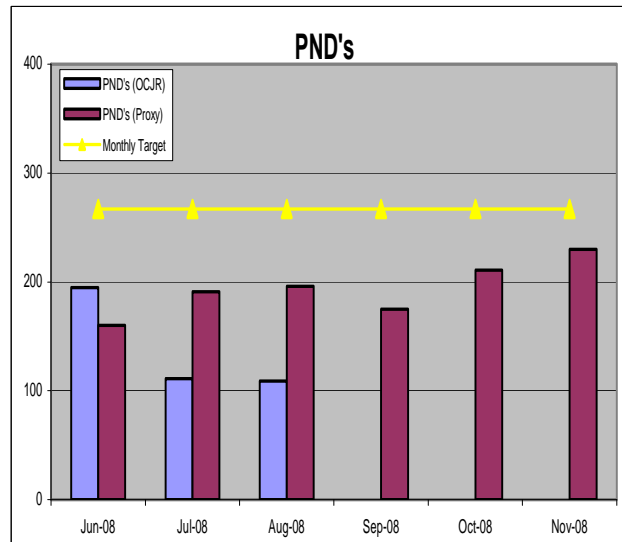
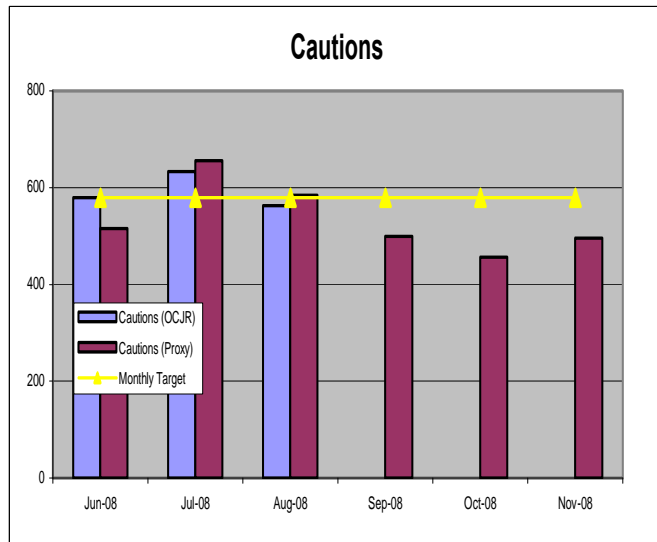
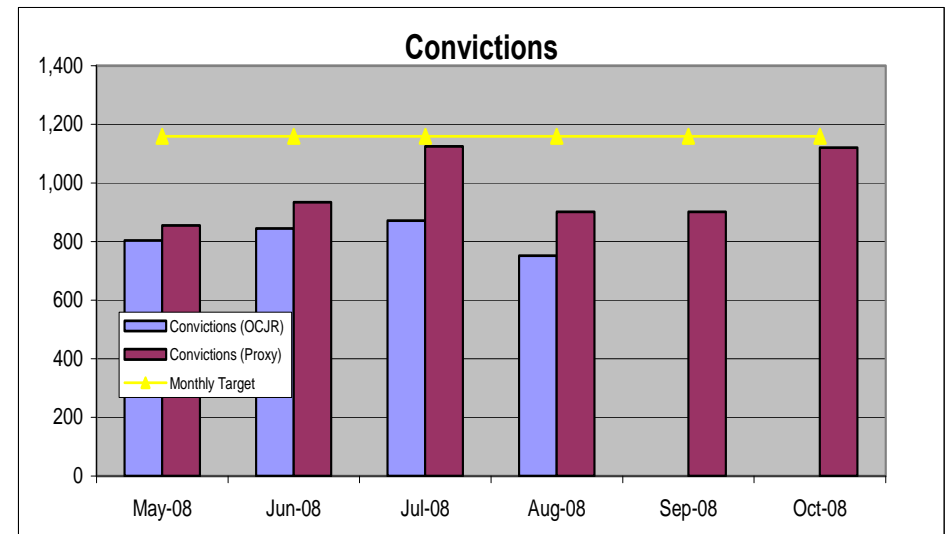
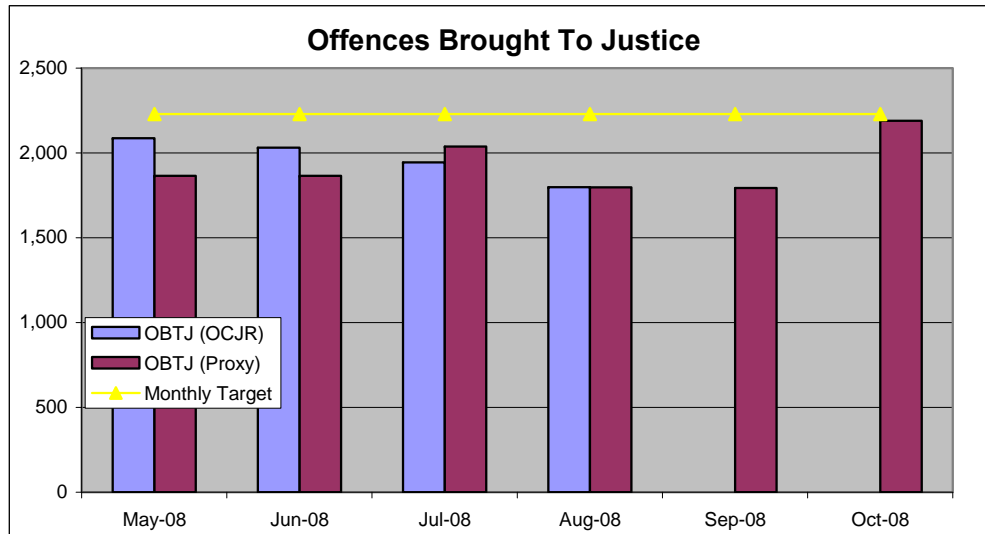
% of OBTJ by Disposal Type



	May-08	Jun-08	Jul-08	Aug-08	Sep-08	Oct-08
■ Formal Warnings	7.8%	7.8%	8.7%	9.8%	6.9%	7.6%
■ Cautions	29.9%	28.5%	32.6%	30.8%	25.9%	19.2%
■ TIC's	11.2%	12.5%	8.2%	11.0%	11.3%	16.9%
■ PNDs	12.6%	9.6%	5.7%	6.1%	9.1%	8.9%
■ Convictions	38.5%	41.6%	44.8%	41.8%	46.8%	47.3%

Source: OBTJ Data – OIDD Nov 2008 and OCJR Aug 2008

Offences Brought To Justice by Category



Source: OBTJ Data – OIDD Nov 2008 and OCJR Aug 2008

Offences Brought to Justice - Rolling Annual OBTJ Rate August 2008	Offences Brought to Justice August 2008				
	ALL Tier 1 Crime	Tier 1 Serious Violent Offences	Tier 1 Serious Sexual Offences	Tier 2 Acquisitive Crime	Tier 3 Other Crime
England and Wales					
Avon & Somerset	27.6%	38.1%	22.4%	12.9%	33.7%
Bedfordshire	33.9%	40.1%	28.8%	8.4%	33.5%
Cambridgeshire	25.5%	24.3%	26.2%	12.8%	34.1%
Cheshire	48.8%	54.3%	45.8%	14%	32%
Cleveland	49.8%	41.2%	56.1%	14.7%	38.9%
Cumbria	42.7%	52.6%	37.1%	19.5%	43.3%
Derbyshire	30.9%	25.4%	34.6%	16.3%	31.3%
Devon and Cornwall	39.4%	36.5%	40.7%	13%	32.6%
Dorset	40.1%	30.3%	43.6%	10.9%	31.4%
Durham	56.9%	57.1%	56.7%	11.9%	34.9%
Dyfed Powys	45.6%	37.1%	54.6%	22.1%	51.2%
Essex	30%	26.3%	32.4%	10.6%	37%
Gloucestershire	30.5%	36.9%	28.3%	20.4%	33.2%
Greater Manchester	34.6%	31%	38.1%	9.9%	30.6%
Gwent	27%	24.5%	29.7%	11.8%	40.6%
Hampshire & IOW	38.6%	55.7%	33.5%	9.5%	28.8%
Hertfordshire	34.1%	46.2%	28.2%	10.5%	35.5%
Humberside	35.9%	52%	26.3%	12.3%	34.2%
Kent	31.1%	24.1%	37%	14.3%	32.4%
Lancashire	43.6%	28.1%	65.1%	23.8%	39.1%
Leicestershire	22.2%	29.2%	18.8%	14.6%	32.3%
Lincolnshire	49.5%	47.7%	50.3%	11%	32.9%
London	24.6%	29.7%	21.5%	10.3%	32.2%
Merseyside	25.1%	22.8%	29.3%	15.1%	43.9%
Norfolk	33.9%	36.9%	32.3%	26.4%	39.3%
Northamptonshire	32.8%	34.6%	31.5%	13.3%	26.2%
Northumbria	45.3%	62.1%	34.4%	18.2%	43.9%
North Wales	45.3%	45%	45.5%	20.1%	42.4%
North Yorkshire	53.1%	54.1%	52.6%	8.7%	36.7%
Nottinghamshire	40.1%	44.5%	37.4%	9.5%	26.5%
South Wales	35.9%	34.5%	37.7%	10.7%	29.9%
South Yorkshire	46.1%	44.5%	47.6%	22%	32.9%
Staffordshire	48.9%	107.9%	29%	12.5%	29.9%
Suffolk	40.6%	57.4%	33.9%	14.1%	39.3%
Surrey	35.4%	52.4%	30.6%	8.9%	29.5%
Sussex	41%	60.9%	34.9%	9.9%	34.5%
Thames Valley	31.3%	50.9%	24%	10.3%	28.3%
Warwickshire	29.4%	27.1%	31%	13%	31.6%
West Mercia	33%	42.6%	28.6%	13.3%	36.4%
West Midlands	26.1%	21.7%	30.7%	9%	35.9%
West Yorkshire	34.2%	37.7%	31.5%	17.9%	28.2%
Wiltshire	32.1%	52.4%	24.3%	16.2%	31.5%

Source: CJ-MIS National Figures – August 2008

**Offences Brought to Justice -
Rolling Annual OBTJ Rate
August 2008**

	Offences Brought to Justice August 2008					
	ALL Tier 1 Crime	Tier 1 Serious Violent Offences	Tier 1 Serious Sexual Offences	Tier 2 Acquisitive Crime	Tier 3 Other Crime	Latest Period
Avon & Somerset	27.6%	38.1%	22.4%	12.9%	33.7%	Aug 08
Bedfordshire	33.9%	40.1%	28.8%	8.4%	33.5%	Aug 08
Essex	30%	26.3%	32.4%	10.6%	37%	Aug 08
Hampshire & IOW	38.6%	55.7%	33.5%	9.5%	28.8%	Aug 08
Hertfordshire	34.1%	46.2%	28.2%	10.5%	35.5%	Aug 08
Kent	31.1%	24.1%	37%	14.3%	32.4%	Aug 08
Sussex	41%	60.9%	34.9%	9.9%	34.5%	Aug 08
Thames Valley	31.3%	50.9%	24%	10.3%	28.3%	Aug 08

Source: CJ-MIS National Figures – August 2008

Hertfordshire OBTJ Rate by Seriousness – Summary

[Aug 08 - Hertfordshire](#)

Tier		Recorded Crime		Convictions		Cautions		TICs		Cannabis Warnings		PNDs		Total OBTJs		Rate		MSG Average	
		Month	RA	Month	RA	Month	RA	Month	RA	Month	RA	Month	RA	Month	RA	Month	RA	Month	RA
Tier 1	Serious Sexual Offences	43	560	2	133	0	22	0	3			0	0	2	158	4.65	28.21	19.15	30.14
Tier 1	Serious Violent Offences	34	275	12	97	3	30	0	0			0	0	15	127	44.12	46.18	18.85	42.78
Tier 1		77	835	14	230	3	52	0	3			0	0	17	285	22.08	34.13	17.94	33.47
Tier 2	Serious Acquisitive Crime	1309	15859	50	728	8	176	90	761			0	0	148	1665	11.31	10.50	11.21	10.79
Tier 3	Other Offences	5193	61741	688	9428	552	6673	108	1673	176	1665	109	2484	1633	21923	31.45	35.51	28.53	32.98

Sanction Detection Rate Most Similar Area Comparison

Latest Detected Crimes Data	Sep - 2008
Latest Recorded Crimes Data	Sep - 2008
Most Similar Areas	Rolling Annual Sanction Detection Rate
Avon & Somerset	26.73%
Bedfordshire	27.21%
Essex	35.64%
Hampshire & IOW	27.89%
Hertfordshire	32.64%
Kent	30.26%
Sussex	31.16%
Thames Valley	26.92%
Most Similar Area Average	29.81%

Recorded Crime per 1000 (Population / Household) - Rolling Annual

Latest Recorded Crimes Data	Sep-2008
Most Similar Areas	All Crime Types (Population)
Avon & Somerset	90.71
Bedfordshire	81.78
Essex	69.40
Hampshire & IOW	88.15
Hertfordshire	73.90
Kent	77.06
Sussex	73.40
Thames Valley	91.30
Most Similar Area Average	81.50

Source: CJ-MIS October 2008

Hertfordshire OBTJ Rate by Seriousness - Detail

Aug 08 - Hertfordshire

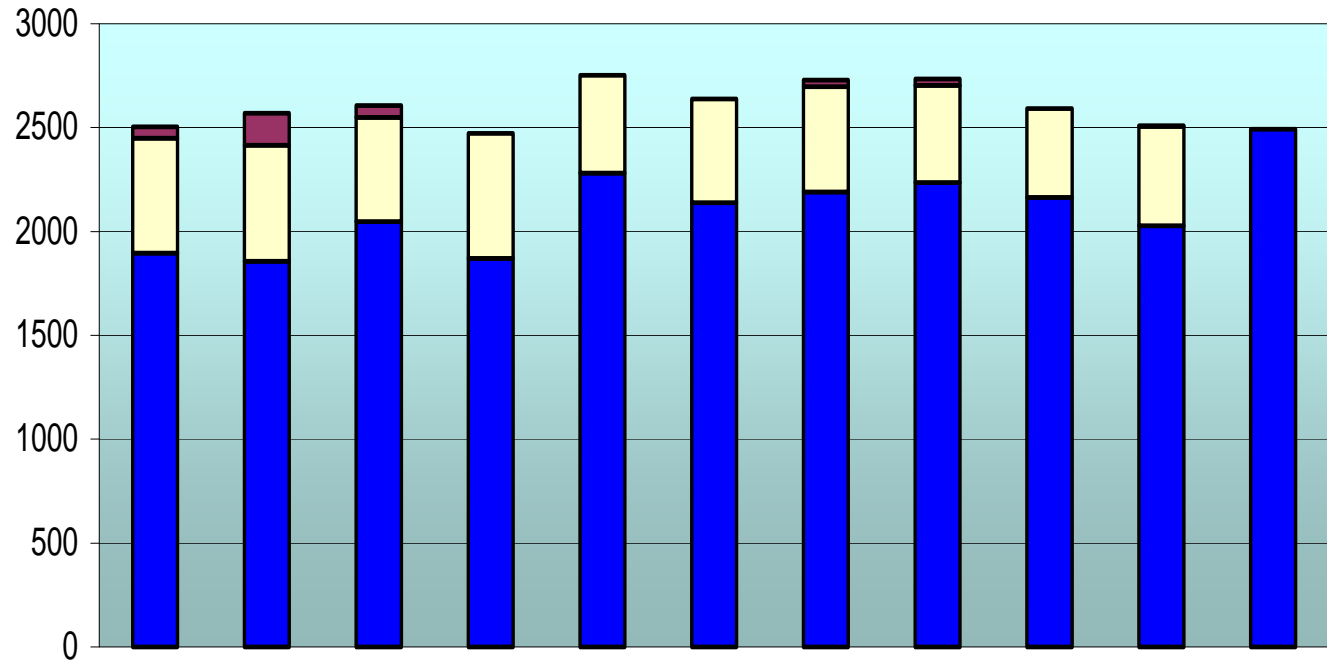
Tier	Seriousness Offence Group	Recorded Crime		Convictions		Cautions		TICs		Cannabis Warning		PNDs		Total OBTJs		Rate		MSG Average		National Rate		
		Month	RA	Month	RA	Month	RA	Month	RA	Month	RA	Month	RA	Month	RA	Month	RA	Month	RA	Month	RA	
Tier 1	Serious Sexual Offences	Abuse of children through prostitution and pornography.		3													0	0	0	259.17	42.857	100
		Causing sexual activity without consent.	1	6													0	0	0	53.323	22.222	38.278
		Rape.	12	169		31									31		0	18.343	4.2852	18.496	11.738	17.902
		Sexual activity etc. with a person with a mental disorder.		1													0	0		65.625	25	60.377
		Sexual Activity involving a Child under 13.		3		3		1							4		0	133.33	41.333	68.252	49.677	49.355
		Sexual Assault on a Female.	26	334	2	66		20		3					2	89	7.6923	26.647	27.653	31.391	37.71	37.425
		Sexual Assault on a Male.	4	43		33		1							34		0	79.07	38.651	64.296	50.785	51.012
		Trafficking for sexual exploitation.		1													0	0		0	0	54.545
Tier 1	Serious Violent Offences	Attempted Murder.	2	11	2	2								2	2	100	18.182	33.333	31.705	17.5	20.328	
		Causing Death by Aggravated Vehicle Taking.															0	0		100	0	106.25
		Causing Death by Dangerous Driving, Causing death by Careless Driving when under the influence of drink or drugs, and Causing Death by Careless and Inconsiderate Driving.	1	11		8									8		0	72.727	46.667	140.85	45	77.778
		Homicide and Child Destruction.		6	4	12									4	12	0	200	37.5	153.42	52.113	95.698
		Wounding or other act endangering life, and Grievous Bodily Harm without intent.	31	247	6	75	3	30							9	105	29.032	42.51	16.506	38.756	14.694	32.992
Tier 2	Serious Acquisitive Crime	Aggravated burglary in a dwelling	6	49		14									14		0	28.571	15	29.789	16.556	21.668
		Aggravated Vehicle Taking	13	122	6	84	1	13							7	97	53.846	79.508	66.826	82.435	61.439	71.769
		Burglary in a dwelling	398	4,931	19	241	2	30	55	407					76	678	19.095	13.75	14.964	13.826	14.433	15.047
		Robbery of Business Property & Robbery of Personal Property	63	702	5	165		6		8					5	179	7.9365	25.499	12.915	19.361	15.275	18.25
		Theft from a Vehicle	613	7,480	7	86	2	45	22	224					31	355	5.0571	4.746	6.6057	5.9961	7.5377	8.238
		Theft or Unauthorised Taking of a Motor Vehicle	216	2,575	13	138	3	82	13	122					29	342	13.426	13.282	12.979	12.822	11.204	12.299
Tier 3	Other Offences	5,193	61,741	688	9,428	552	6,673	108	1,673	176	1,665	109	2,484	1,633	21,923	31.446	35.508	28.526	32.976	28.822	33.389	

Source: CJ-MIS August 2008

List of Offences by Seriousness

Serious Sexual Offences (Tier1)	Serious Violent Offences (Tier1)
Abuse Of Children Through Prostitution & Pornography	Attempted Murder
Causing Sexual Activity Without Consent	Causing Death By Aggravated Vehicle Taking
Indecent Assault On A Female	Causing death by dangerous or careless driving (inc under influence)
Indecent Assault On A Male	Causing death by dangerous or careless driving (inc. under influence of drink/drugs)
Rape of a Female	Causing death by driving: unlicensed drivers etc.
Rape Of A Female Aged 16 And Over	Child Destruction
Rape Of A Female Child Under 13	Infanticide
Rape Of A Female Child Under 16	Manslaughter
Rape of a Male	Murder
Rape Of A Male Aged 16 And Over	Wounding Or Other Act Endangering Life
Rape Of A Male Child Under 13	
Rape Of A Male Child Under 16	
	Serious Acquisitive Offences (Tier2)
Sexual Activity etc With A Person With A Mental Disorder	Aggravated Burglary In A Dwelling
Sexual Activity Involving A Child Under 13	Aggravated Vehicle Taking
Sexual Assault On A Female Aged 13 And Over	Burglary In A Dwelling
Sexual Assault On A Female Child Under 13	Robbery Of Business Property
Sexual Assault On A Male Aged 13 And Over	Robbery Of Personal Property
Sexual Assault On A Male Child Under 13	Theft From A Vehicle
Trafficking For Sexual Exploitation	Theft Or Unauthorised Taking Of A Motor Vehicle

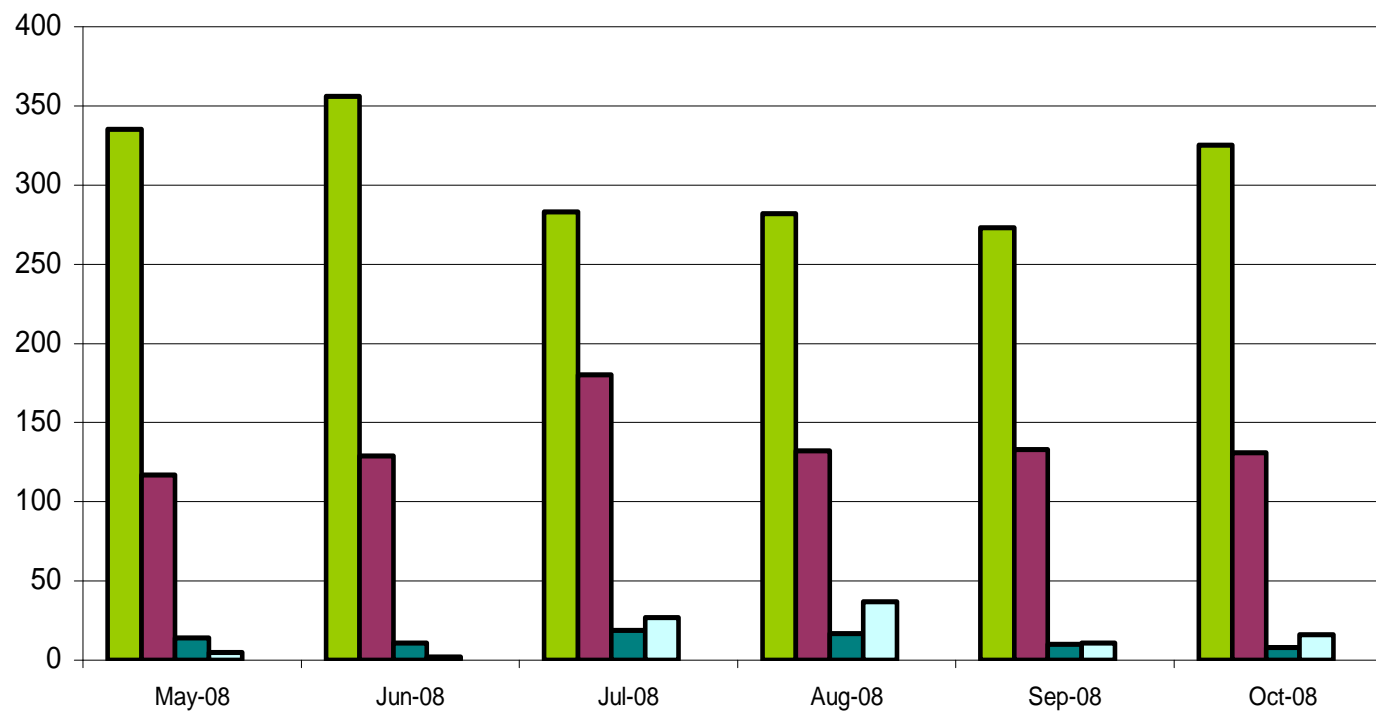
Total Arrests and Statutory Charge Referrals



	Jan-08	Feb-08	Mar-08	Apr-08	May-08	Jun-08	Jul-08	Aug-08	Sep-08	Oct-08	Nov-08
■ Arrest/Stat Charge %	22.6%	23.1%	19.7%	24.3%	17.1%	18.9%	18.9%	17.3%	16.5%	19.1%	0.0%
■ Op. SafeGuard	53	154	57	0	0	0	31	33	0	0	0
■ Statutory Charge	553	559	502	602	471	498	509	468	427	480	
■ Arrests	1897	1857	2048	1871	2282	2140	2189	2235	2165	2028	2492

Source: MIS (BTJ Data Nov) and CPS (PTPM02-Oct)

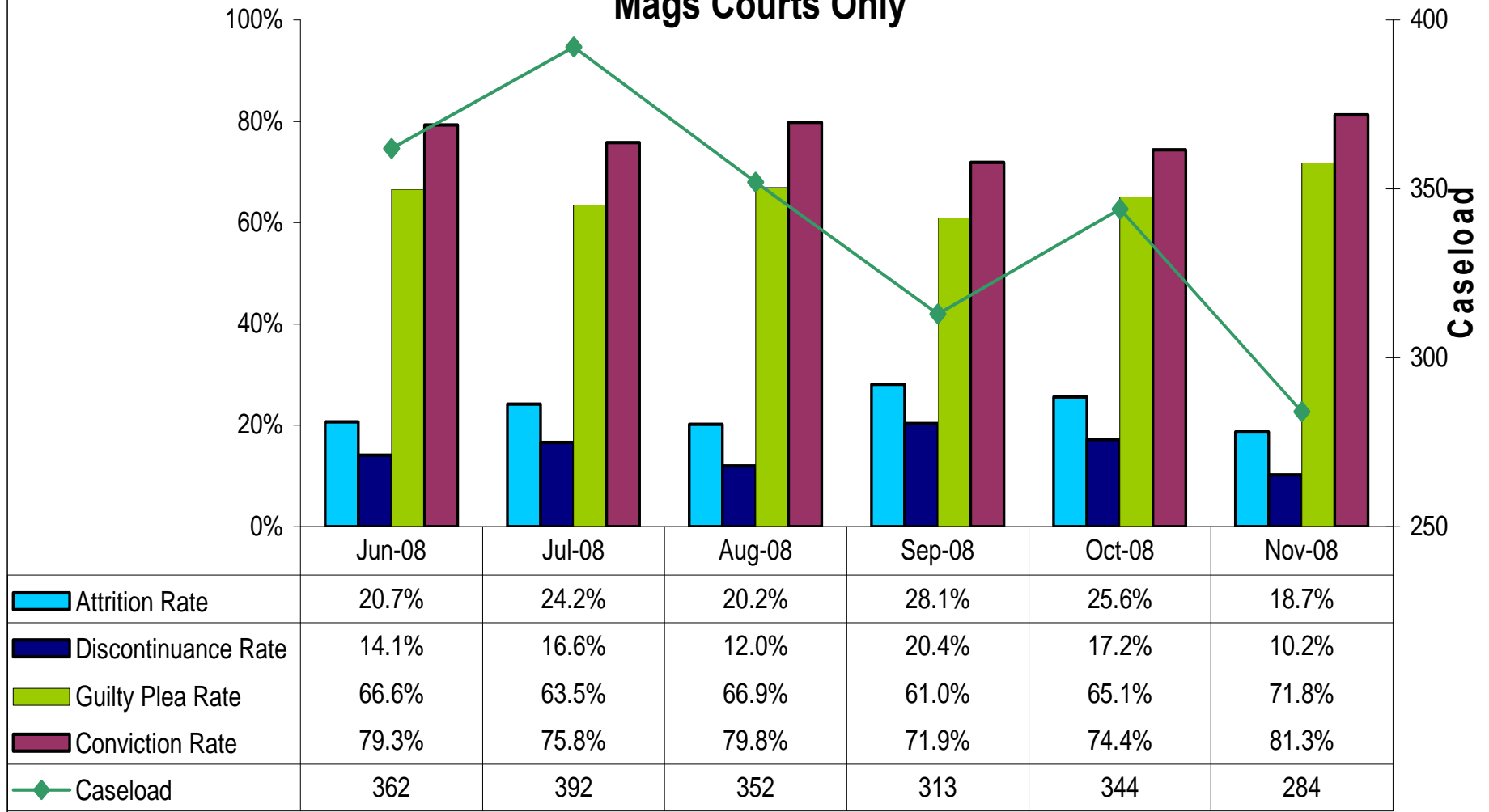
Statutory Charge Referrals by "Last Decision Made"



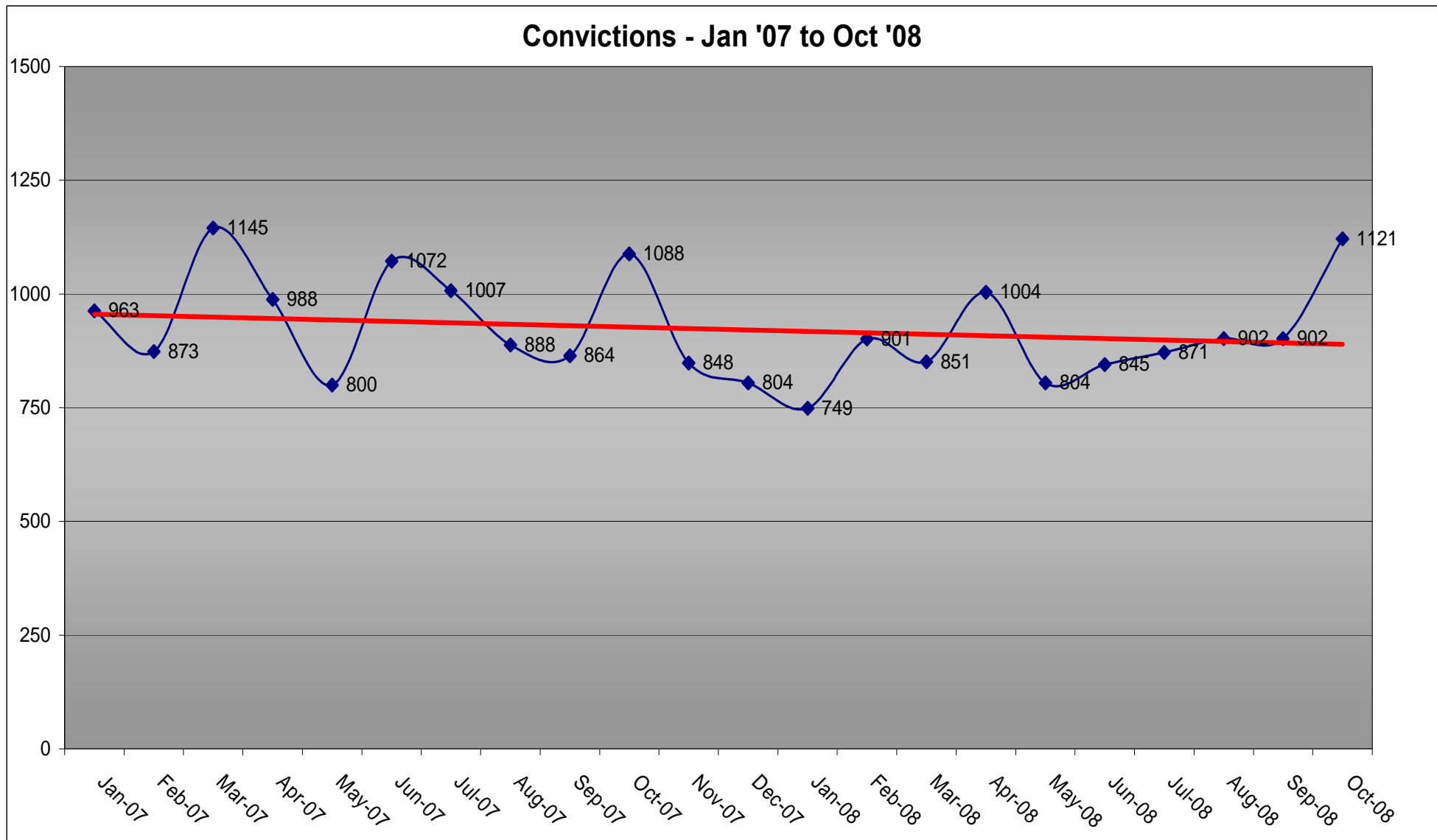
	May-08	Jun-08	Jul-08	Aug-08	Sep-08	Oct-08
■ Charge	335	356	283	282	273	325
■ NFA	117	129	180	132	133	131
■ Caution, TIC, etc	14	11	19	17	10	8
■ Other	5	2	27	37	11	16
■ On Bail for Further Enquiries	0	0	0	0	0	0

Source: CPS PTPM02 (Oct 08)

Statutory Charging Programme - Outcomes for Defendants Subject to Pre-Charge Decisions Mags Courts Only

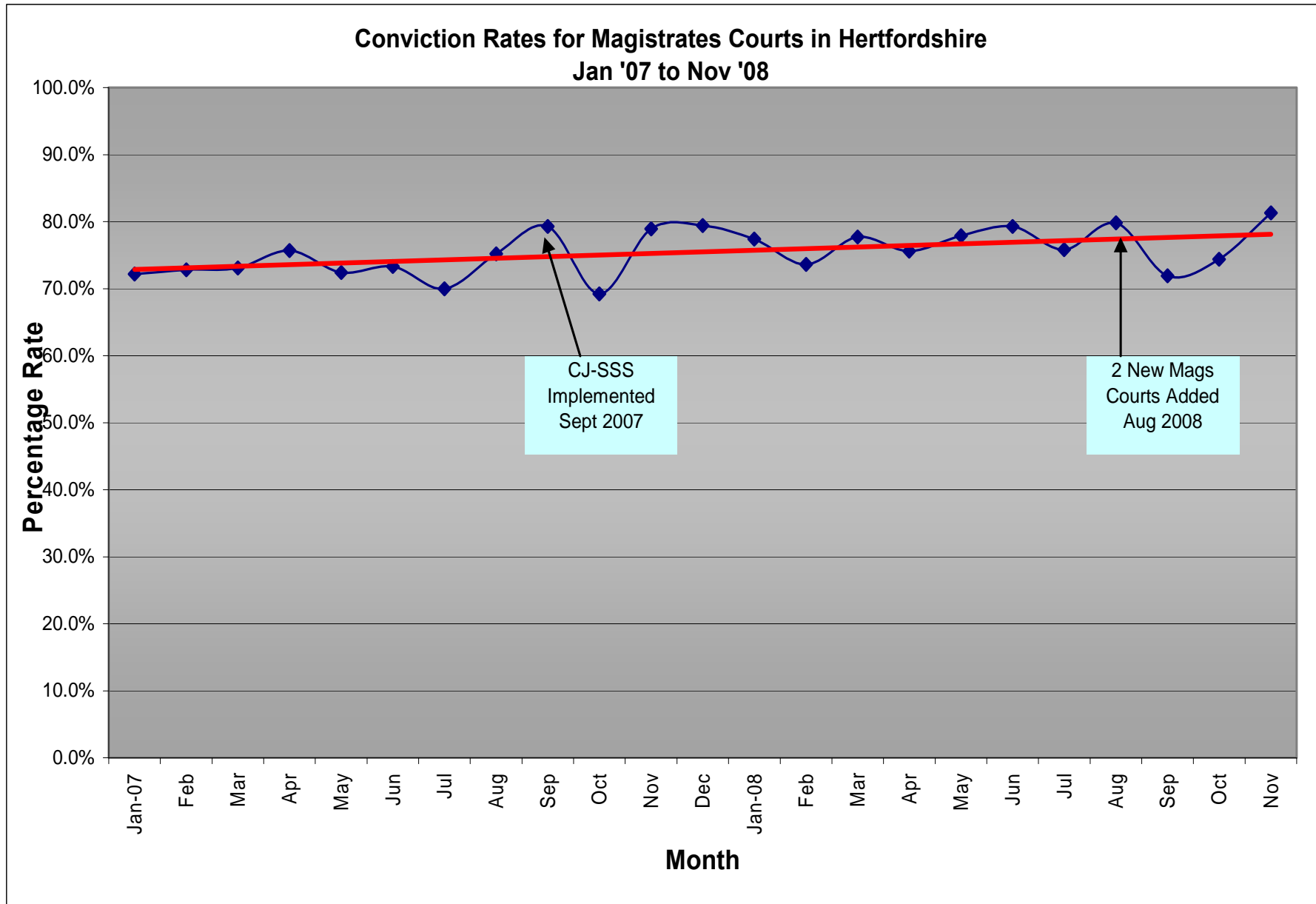


Source: PCD Benefits Model November 2008



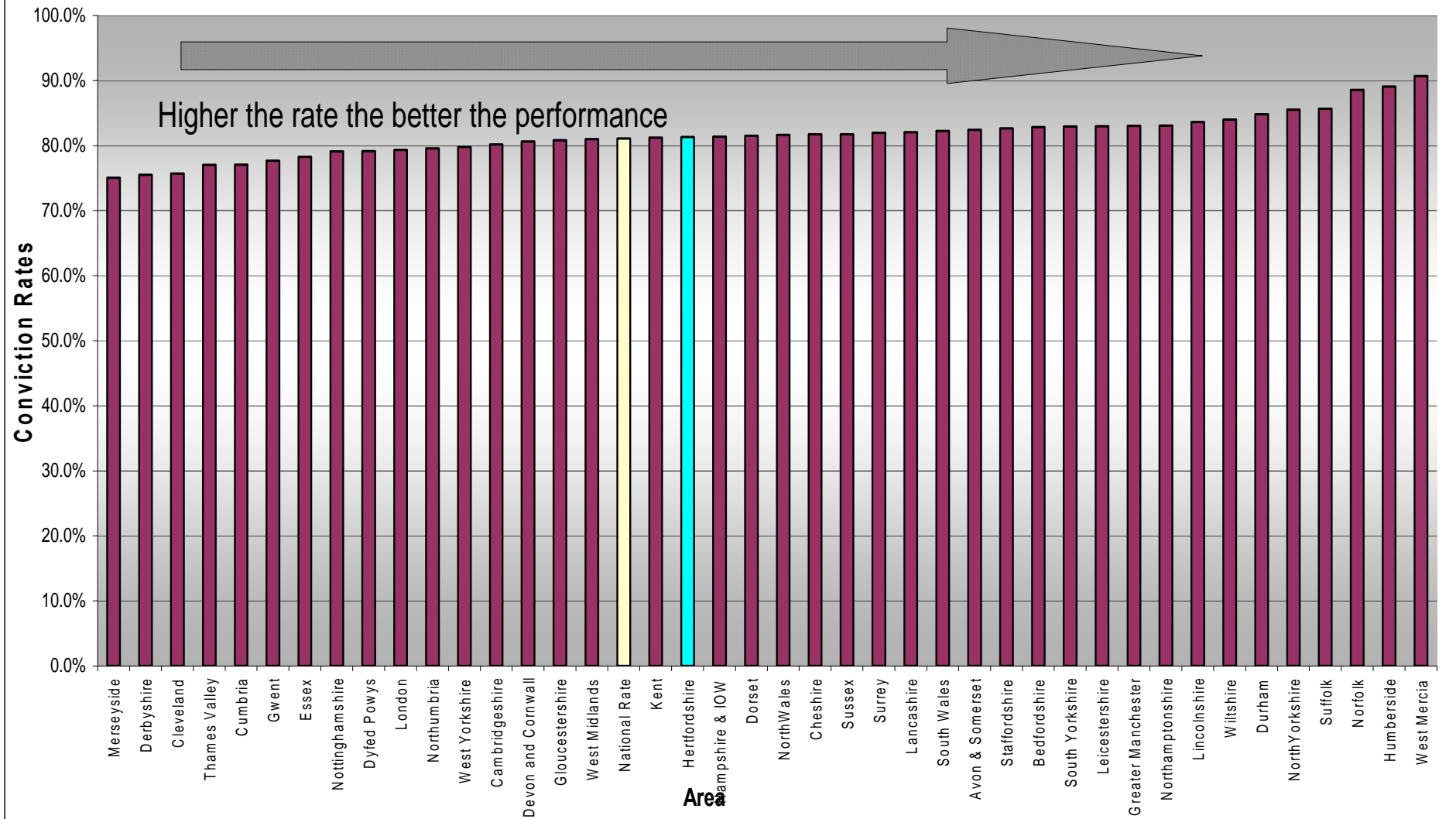
Source: MIS (BTJ Data –Jan '07 to Oct '08)

A Conviction is defined as: A judgment of the court based either on the decision of a jury or judge that the defendant is guilty of the crime for which he or she was tried.



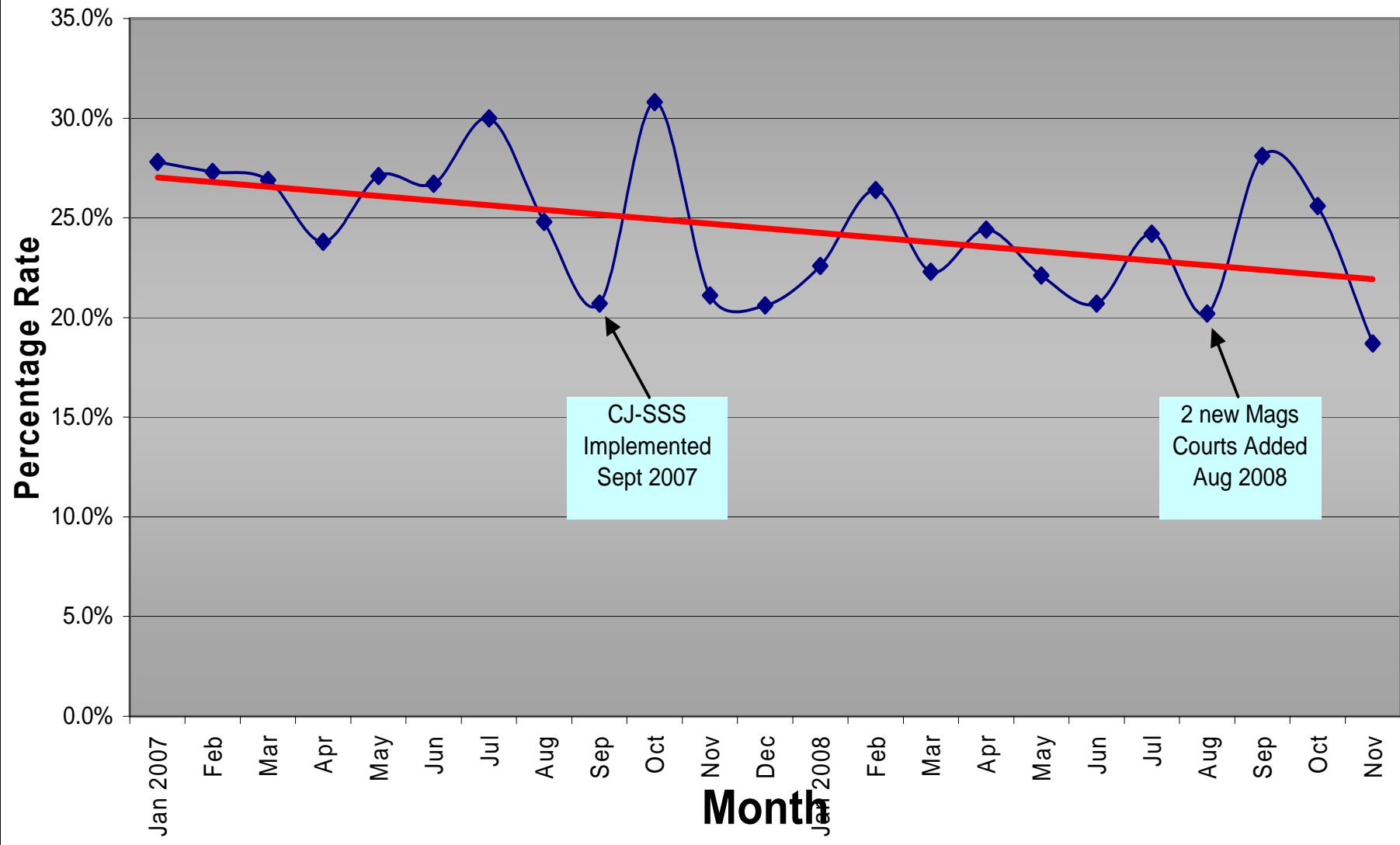
Source: PCD Benefits Model – Nov 2008

Convictions - November 2008



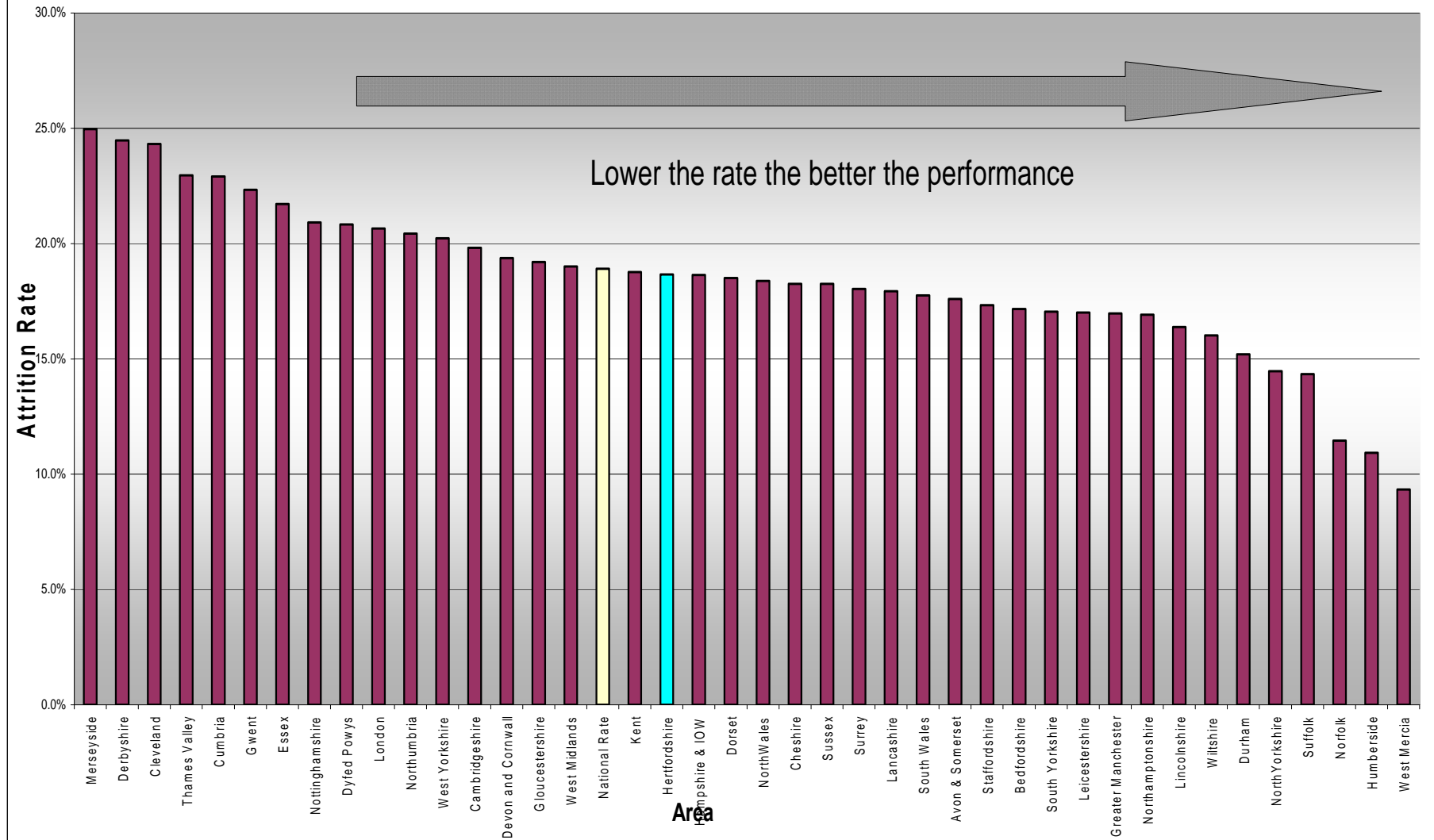
Source: PCD Benefits Model – November 2008

Attrition Rate for Magistrates Cases in Hertfordshire Jan 2007 to Nov 2008



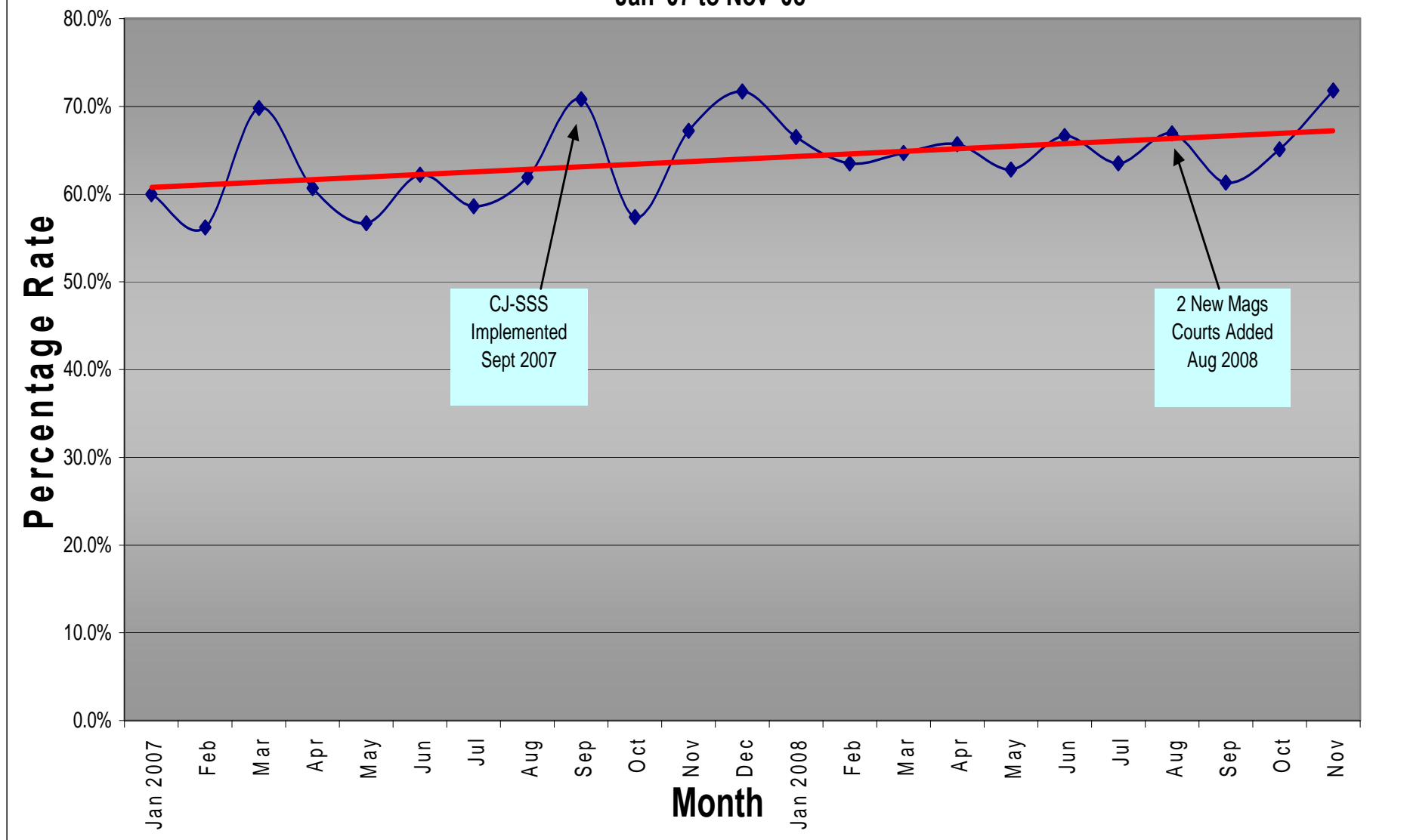
Source: PCD Benefits Model – November 2008

Magistrates Court Attrition - November 2008



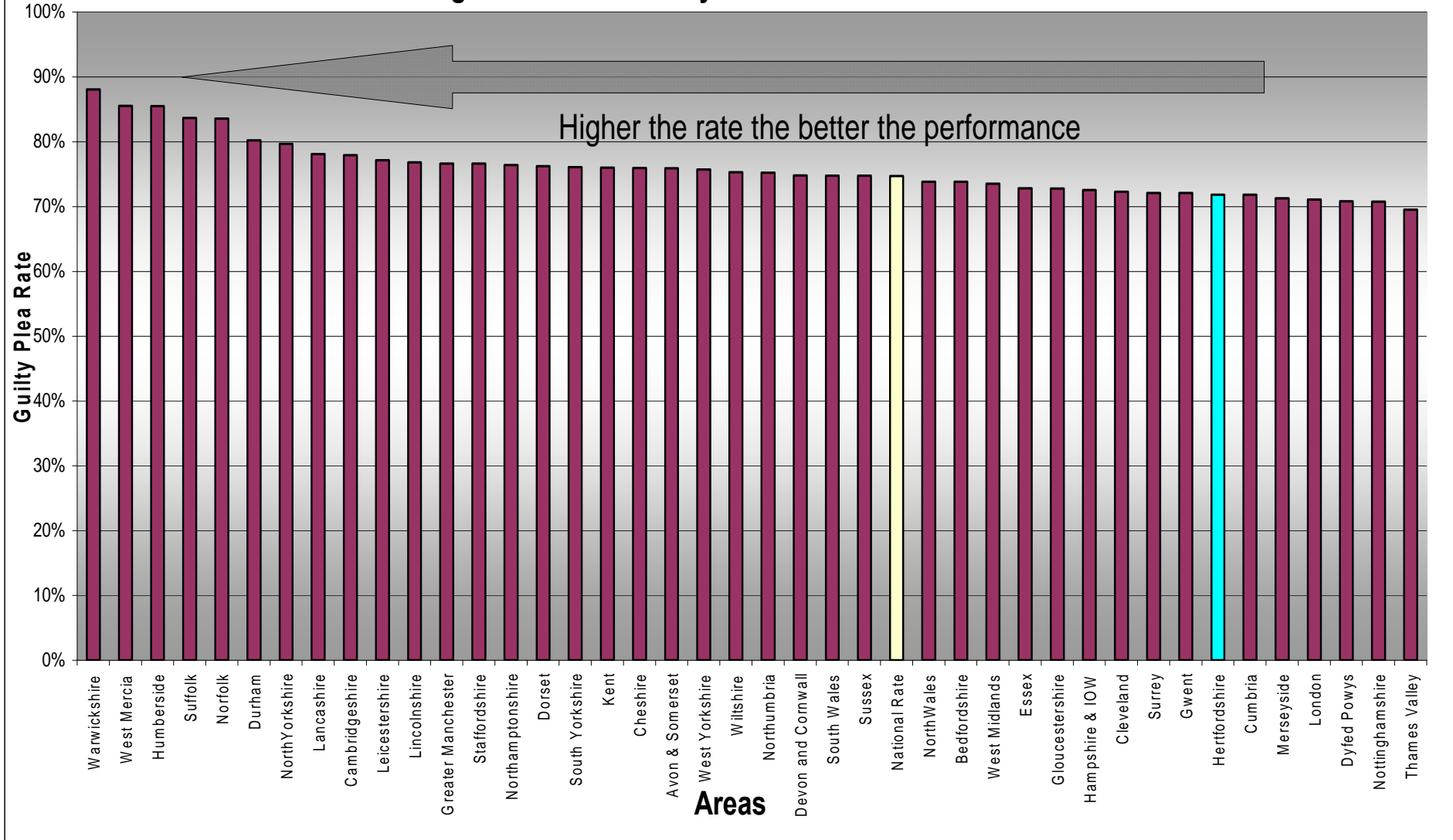
Source: PCD Benefits Model – November 2008

Guilty Plea Rate of Magistrates Cases in Hertfordshire Jan '07 to Nov '08



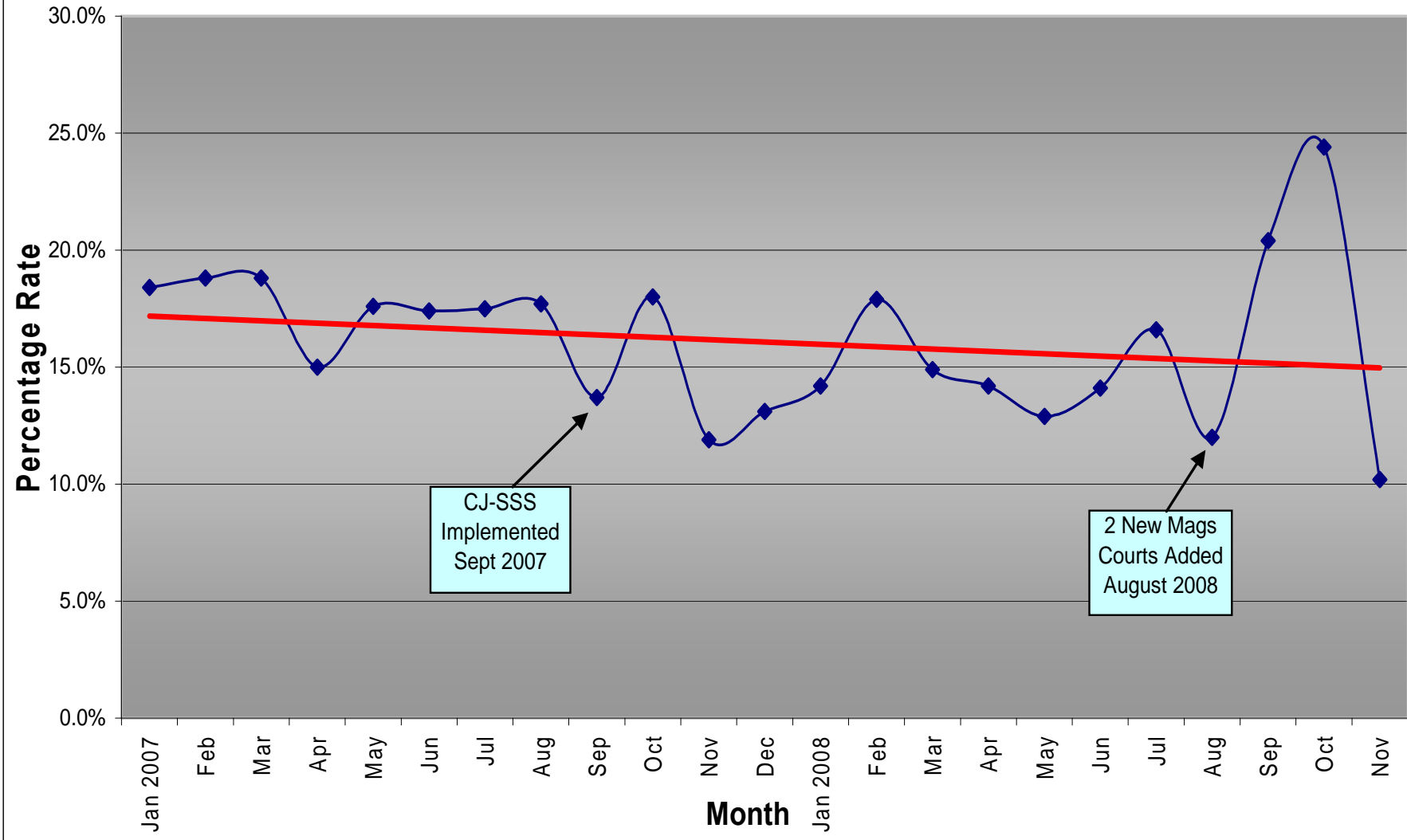
Source: PCD Benefits Model -- November 2008

Magistrates Court Guilty Pleas for November 2008



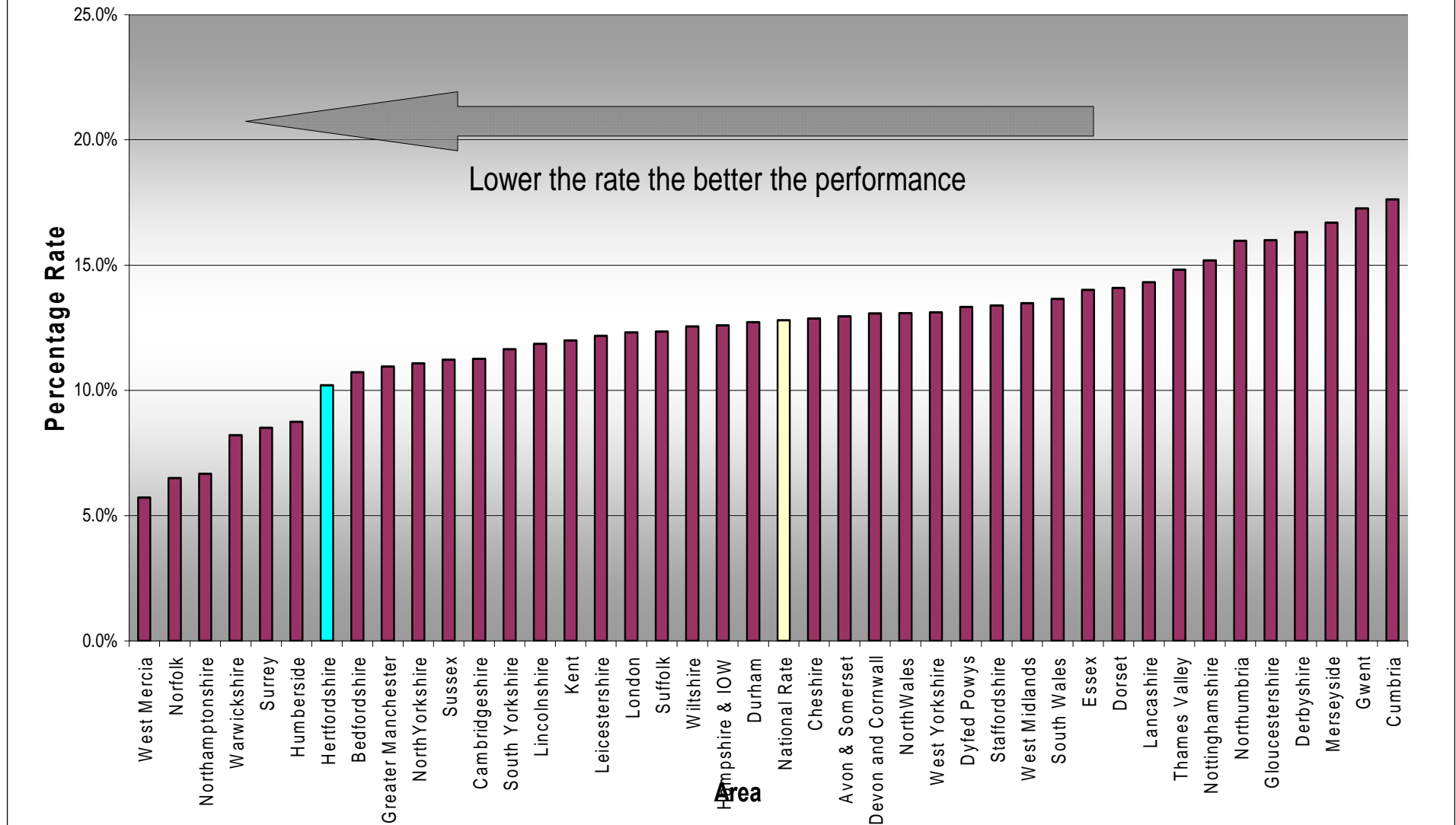
Source: PCD Benefits Model – November 2008

**Discontinuance Rate of Magistrates Cases in Hertfordshire
Jan '07 to Nov '08**

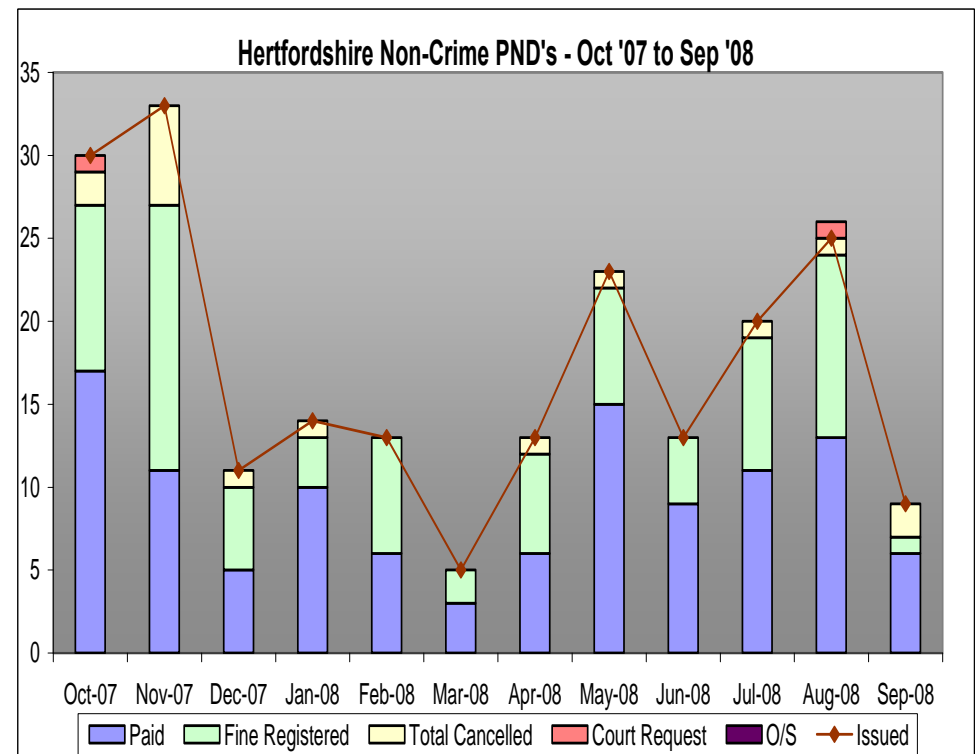
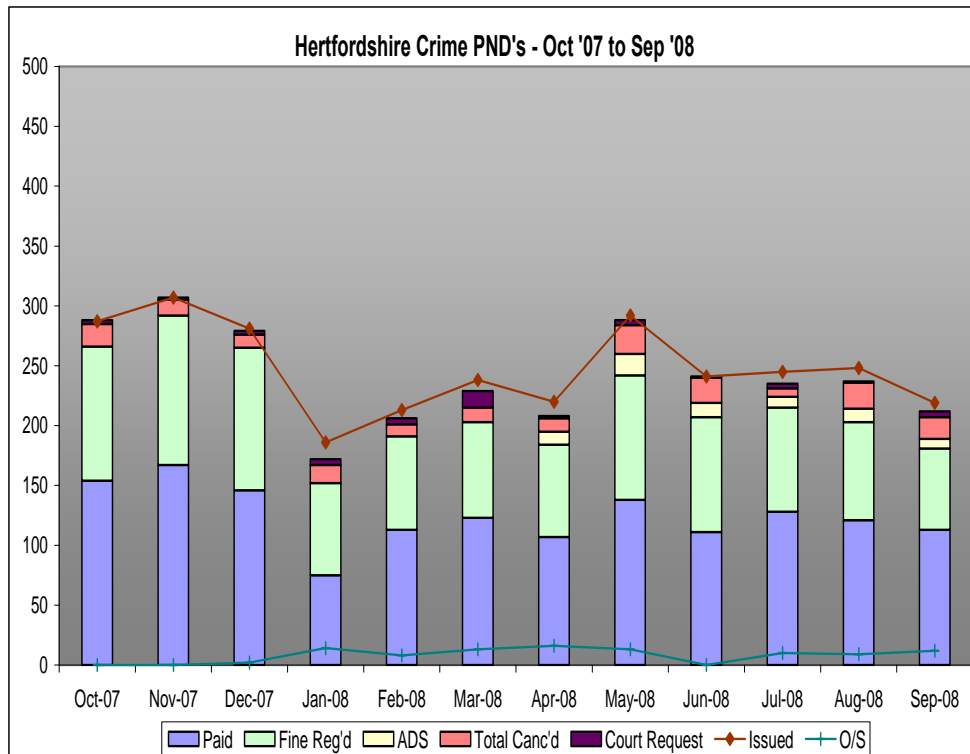


Source: PCD Benefits Model – November 2008

Magistrates Court Discontinuance for November 2008



Source: PCD Benefits Model – November 2008



	Issued	Paid	Fine Reg'd	ADS	Total Canc'd	Court Request	O/S
Oct-07	287	154	112		19	3	
Nov-07	307	167	125		13	2	
Dec-07	281	146	119		11	3	
Jan-08	186	75	77		15	5	1
Feb-08	213	113	78		10	5	
Mar-08	238	123	80		12	14	1
Apr-08	220	107	77	11	11	2	1
May-08	292	138	104	18	24	4	1
Jun-08	241	111	96	12	21	1	
Jul-08	245	128	87	9	7	4	1
Aug-08	248	121	82	11	22	1	
Sep-08	219	113	68	8	18	5	1

	Issued	Paid	Fine Registered	Total Cancelled	Court Request	O/S
Oct-07	30	17	10	2	1	0
Nov-07	33	11	16	6	0	0
Dec-07	11	5	5	1	0	0
Jan-08	14	10	3	1	0	0
Feb-08	13	6	7	0	0	0
Mar-08	5	3	2	0	0	0
Apr-08	13	6	6	1	0	0
May-08	23	15	7	1	0	0
Jun-08	13	9	4	0	0	0
Jul-08	20	11	8	1	0	0
Aug-08	25	13	11	1	1	0
Sep-08	9	6	1	2	0	0

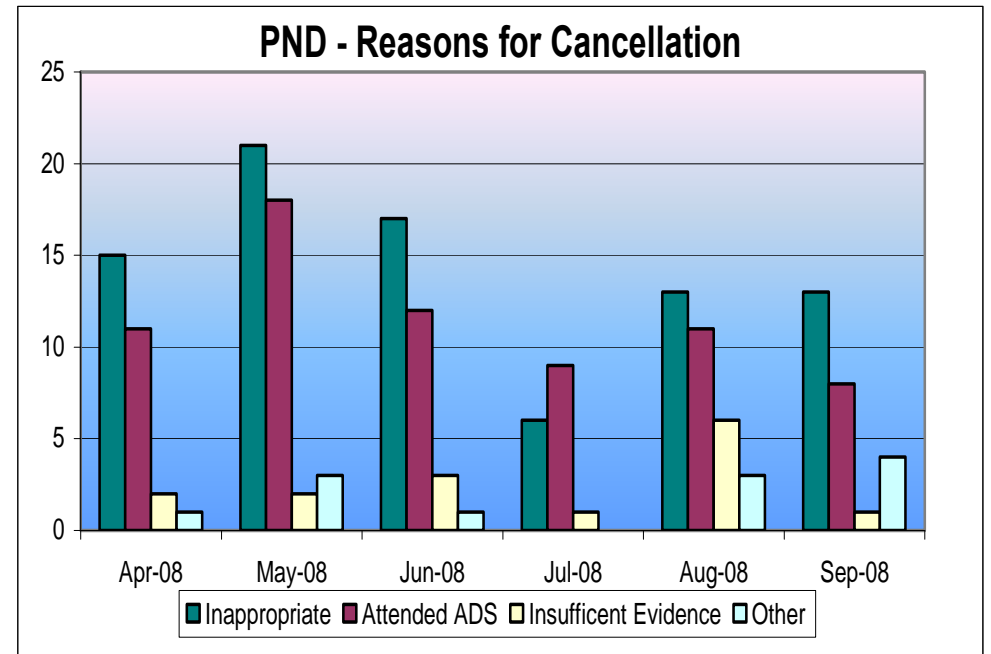
Source: CTO – Sep 2008

Alcohol Diversion Scheme

Month	PNDs Issued	Non Herts resident	DD	Section 5	Attended course
November	31	6	12	19	6
December	52	12	20	31	4
January	31	5	11	20	4
February	26	4	15	11	3
March	26	9	13	13	5
April	66	8	42	24	3
May	96	18	27	69	10
June	63	7	27	35	13
July	61	12	25	36	10
August	73	16	18	55	15
September	51	14	21	30	14
October	55	9	9	46	5

Due to the 3 week cycle only one course was run during October. Also this course was run in the Western Division area and during October only 17 alcohol related PNDs were issued by Western Division against 29 last October a drop of 42%. It's possible that the drop is down to the change of policing style in Watford

PND's – Reasons for Cancellation



Source: CTO September2008

CJ-SSS Performance Reports – November 2008

CJ-SSS Hertfordshire	Local Base	Apr-08	May-08	Jun-08	Jul-08	Aug-08	Sep-08	Oct-08	Nov-08
Initial Plea Rate at first listing	71%	80% 449	80% 465	76% 358	78% 414	72% 402	75% 444	76% 526	77% 455
Initial guilty plea rate at first listing or before	49%	55% 310	58% 340	56% 265	59% 315	52% 289	56% 325	57% 396	56% 331
Initial not guilty plea at first listing or before	27%	23% 127	21% 125	20% 93	19% 99	20% 113	21% 119	19% 130	21% 124
Case where no plea is entered at first hearing	19%	4% 23	3% 19	3% 14	4% 20	4% 20	5% 28	4% 24	4% 25
Defendant fails to appear at first hearing	7%	11% 61	8% 49	13% 61	10% 53	13% 70	12% 68	13% 87	10% 58
Committals to Crown Court	7%	7% 42	9% 51	9% 61	8% 42	12% 66	6% 37	8% 52	9% 50
Caseload at first hearing		563	584	474	529	558	577	689	588
Average number of days from charge to disposal	OCJR = 42			74			54		
Initial guilty pleas disposed of at first listing	OCJR = 60%	75% 231	71% 243	72% 190	73% 229	72% 209	77% 249	76% 300	70% 232

CJU Returns – November 2008

We have missed 2 targets in November

- “Fail to Appear at First Hearing” is 3% pts off target for this month
- “Committals to Crown Court” is 2% off target for this month

Central Herts Magistrates Courts	Source	Target	Local Base	Apr-08	May-08	Jun-08	Jul-08	Aug-08	Sep-08	Oct-08	Nov-08
Initial Plea Rates											
Initial Plea Rate at first listing	CJU		67%	77%	82%	76%	76%	72%	75%	75%	73%
				110	117	110	98	124	127	156	132
Initial guilty plea rate at first listing or before	CJU		49%	62%	61%	58%	68%	52%	52%	57%	50%
				87	87	83	84	91	88	119	90
Initial not guilty plea at first listing or before	CJU		18%	15%	21%	19%	11%	19%	23%	18%	23%
				21	30	27	14	33	39	37	42
Case where no plea is entered at first hearing	CJU		22%	7%	3%	6%	7%	8%	7%	4%	7%
				10	5	9	9	14	12	9	13
Defendant fails to appear at first hearing	CJU		7%	7%	5%	8%	8%	9%	12%	13%	9%
				10	7	12	10	16	20	26	16
Committals to Crown Court	CJU		4%	9%	10%	9%	6%	11%	6%	8%	11%
				12	14	13	7	19	11	16	19
First hearing											
Caseload at first hearing	CJU			140	143	144	124	173	170	207	180
% of cases adjourned without plea, by reason	CJU	Legal Aid		0%	14%	0%	11%		14%	22%	0%
					1		1		1	2	
	CJU	Defence App		30%	14%	11%	33%		57%	22%	0%
					3	1	1	3		4	2
	CJU	Prosecution App		10%	0%	44%	11%		29%	56%	100%
				1		4	1		2	5	3
	CJU	No Advance Information		0%	0%	0%	0%		0%	0%	0%
	CJU	Other		60%	71%	44%	44%		0%	0%	0%
				6	5	4	4				
% of FDRs dealt with the same day	Probation			14%	15%	8%	12%	16%	18%	12%	10%
				12	11	6	11	10	14	10	5
% of Oral reports given	Probation			17%	8%	20%	10%	10%	13%	25%	8%
				14	6	15	9	6	10	20	4
% of SDRs	Probation			69%	76%	72%	78%	74%	70%	63%	83%
				58	54	54	72	45	56	51	43
Disposals											
Initial guilty pleas disposed of at first listing	CJU	60%	73%	82%	74%	75%	68%	71%	72%	74%	67%
				71	64	62	57	65	63	88	60
Timeliness											
Trials commenced within 8 weeks of first hearing	HMCS	80%									
Average number of days from charge to disposal in Magistrates Courts	HMCS	42				62			61		
Average number of hearings for contested cases	HMCS	2									
Cracked and Ineffective trials											
% Effective trials	HMCS		42.9%	41.5%	34.8%	40.9%	46.0%	53.1%	48.9%	35.2%	33.7%
% Cracked trials	HMCS	29.5%	30.7%	29.7%	41.6%	47.3%	37.9%	35.8%	34.1%	33.0%	32.7%
% Ineffective trials	HMCS	19.0%	26.1%	28.8%	23.6%	11.8%	16.1%	11.1%	17.0%	31.8%	33.7%
% Vacated trials	HMCS		30.0%	21.9%	23.3%	35.4%	31.5%	28.9%	25.4%	31.8%	26.9%
% Discontinued trials	CPS		10.0%	11.9%	11.0%	8.3%	12.6%	10.8%	11.1%	9.6%	

East Herts Magistrates Courts	Source	Target	Local Base	Apr-08	May-08	Jun-08	Jul-08	Aug-08	Sep-08	Oct-08	Nov-08
Initial Plea Rates											
Initial Plea Rate at first listing	CJU		76%	81%	73%	74%	77%	73%	82%	75%	84%
				95	108	67	104	77	75	82	81
Initial guilty plea rate at first listing or before	CJU		49%	50%	46%	51%	50%	52%	62%	46%	61%
				59	68	46	68	55	57	51	59
Initial not guilty plea at first listing or before	CJU		28%	31%	27%	23%	27%	21%	20%	28%	23%
				36	40	21	36	22	18	31	22
Case where no plea is entered at first hearing	CJU		22%	3%	3%	1%	2%	2%	5%	4%	2%
				3	5	1	3	2	5	4	2
Defendant fails to appear at first hearing	CJU		6%	9%	9%	19%	13%	8%	9%	15%	8%
				10	13	17	18	8	8	16	8
Committals to Crown Court	CJU		7%	8%	15%	7%	7%	17%	4%	7%	6%
				9	22	6	10	17	4	8	6
First hearing											
Caseload at first hearing	CJU			117	148	91	135	104	92	110	97
% of cases adjourned without plea, by reason	CJU	Legal Aid		33%	20%	100%	33%	0%	40%	25%	0%
				1	1	1	1	2	1	1	
	CJU	Defence App		0%	20%	0%	33%	0%	0%	50%	50%
					1		1			2	1
	CJU	Prosecution App		0%	20%	0%	0%	100%	60%	25%	50%
					1			2	3	1	
CJU	No Advance Information		0%	0%	0%	0%	0%	0%	0%	0%	0%
CJU	Other		66%	40%	0%	33%	0%	0%	0%	0%	0%
				2	2		1				
% of FDRs dealt with the same day	Probation			13%	30%	19%	13%	4%	4%	11%	7%
				7	11	8	8	2	2	5	3
% of Oral reports given	Probation			17%	14%	12%	5%	6%	9%	7%	14%
				9	5	5	3	3	4	3	6
% of SDRs	Probation			69%	57%	70%	82%	90%	87%	83%	80%
				36	21	30	50	45	41	38	35
Disposals											
Initial guilty pleas disposed of at first listing	CJU	60%	73%	75%	75%	70%	81%	65%	77%	75%	75%
				44	51	32	55	36	44	31	44
Timeliness											
Trials commenced within 8 weeks of first hearing	HMCS	80%									
Average number of days from charge to disposal in Magistrates Courts	HMCS	42				92			55		
Average number of hearings for contested cases	HMCS	2									
Cracked and Ineffective trials											
% Effective trials	HMCS		41.3%	40.9%	51.1%	44.9%	44.4%	46.6%	53.4%	49.5%	49.4%
% Cracked trials	HMCS	29.5%	30.7%	28.8%	20.2%	30.3%	28.6%	39.7%	34.5%	33.3%	30.4%
% Ineffective trials	HMCS	19.0%	28.0%	30.3%	28.7%	24.7%	27.0%	13.8%	12.1%	17.2%	20.3%
% Vacated trials	HMCS		21.7%	10.2%	24.8%	25.2%	24.1%	21.6%	31.8%	19.1%	21.8%
% Discontinued trials	CPS		8.5%	12.6%	13.3%	11.0%	12.4%	11.4%	21.8%	12.3%	

North Herts Magistrates Courts	Source	Target	Local Base	Apr-08	May-08	Jun-08	Jul-08	Aug-08	Sep-08	Oct-08	Nov-08
Initial Plea Rates											
Initial Plea Rate at first listing	CJU		76%	75%	82%	83%	76%	72%	80%	81%	84%
				97	103	89	95	92	107	114	98
Initial guilty plea rate at first listing or before	CJU		49%	47%	56%	61%	56%	46%	52%	58%	60%
				61	70	65	70	59	70	84	70
Initial not guilty plea at first listing or before	CJU		28%	28%	26%	22%	20%	26%	28%	21%	24%
				36	33	24	25	33	37	30	28
Case where no plea is entered at first hearing	CJU		22%	1%	4%	1%	3%	1%	2%	2%	1%
				1	5	1	4	1	3	3	1
Defendant fails to appear at first hearing	CJU		6%	17%	10%	7%	13%	13%	13%	11%	10%
				22	12	7	16	16	17	16	12
Committals to Crown Court	CJU		7%	8%	5%	9%	8%	15%	5%	8%	5%
				10	6	10	10	19	7	11	6
First hearing											
Caseload at first hearing	CJU			130	126	107	125	128	134	144	117
% of cases adjourned without plea, by reason	CJU	Legal Aid		0%	20%	0%	75%	0%	0%	0%	0%
					1		3				
	CJU	Defence App		0%	20%	0%	0%	0%	100%	0%	100%
					1				3		1
	CJU	Prosecution App		0%	20%	100%	0%	100%	0%	0%	0%
					1	1		1			
CJU	No Advance Information		0%	0%	0%	0%	0%	0%	0%	0%	0%
CJU	Other		100%	40%	0%	25%	0%	0%	0%	100%	0%
				1	2		1			3	
% of FDRs dealt with the same day	Probation			10%	26%	15%	6%	15%	10%	6%	13%
				6	17	7	3	8	5	4	8
% of Oral reports given	Probation			14%	17%	21%	19%	17%	19%	34%	31%
				8	11	10	10	9	10	24	20
% of SDRs	Probation			76%	58%	65%	76%	68%	71%	61%	56%
				45	38	31	41	36	37	43	36
Disposals											
Initial guilty pleas disposed of at first listing	CJU	60%	73%	66%	83%	66%	69%	81%	80%	70%	74%
				40	58	45	48	48	56	59	52
Timeliness											
Trials commenced within 8 weeks of first hearing	HMCS	80%									
Average number of days from charge to disposal in Magistrates Courts	HMCS	42				78			59		
Average number of hearings for contested cases	HMCS	2									
Cracked and Ineffective trials											
% Effective trials	HMCS		41.3%	46.9%	38.1%	39.3%	51.5%	48.5%	44.8%	52.8%	54.2%
% Cracked trials	HMCS	29.5%	30.7%	28.3%	29.5%	39.3%	31.1%	27.9%	37.3%	26.4%	22.0%
% Ineffective trials	HMCS	19.0%	28.0%	24.8%	32.4%	21.4%	17.5%	23.5%	17.9%	20.8%	23.7%
% Vacated trials	HMCS		21.7%	19.9%	29.1%	28.8%	28.0%	36.4%	31.6%	24.2%	30.6%
% Discontinued trials	CPS		8.5%	12.6%	13.3%	11.0%	12.4%	11.4%	21.8%	12.3%	

West Herts Magistrates Courts	Source	Target	Local Base	Apr-08	May-08	Jun-08	Jul-08	Aug-08	Sep-08	Oct-08	Nov-08
Initial Plea Rates											
Initial Plea Rate at first listing	CJU		69%	78% 147	82% 137	70% 92	81% 117	71% 109	75% 135	76% 174	74% 144
Initial guilty plea rate at first listing or before	CJU		49%	59% 103	69% 115	54% 71	64% 93	55% 84	61% 110	62% 142	58% 112
Initial not guilty plea at first listing or before	CJU		34%	19% 34	13% 22	16% 21	17% 24	16% 25	14% 25	14% 32	17% 32
Case where no plea is entered at first hearing	CJU		13%	5% 9	2% 4	2% 3	3% 4	2% 3	4% 8	4% 8	5% 9
Defendant fails to appear at first hearing	CJU		8%	11% 19	10% 17	19% 25	6% 9	20% 30	13% 23	13% 29	11% 22
Committals to Crown Court	CJU		9%	6% 11	5% 9	9% 12	10% 15	7% 11	8% 15	7% 17	10% 19
First hearing											
Caseload at first hearing	CJU			176	167	132	145	153	181	228	194
% of cases adjourned without plea, by reason	CJU	Legal Aid		0%	60% 3	0%	50% 2	67% 2	0%	13%	1
	CJU	Defence App		0%	0%	33% 1	0%	0%	0%	13%	1
	CJU	Prosecution App		0%	0%	0%	0%	0%	0%	0%	
	CJU	No Advance Information		0%	0%	0%	0%	0%	0%	0%	
	CJU	Other		100%	40% 9	67% 2	50% 2	33% 1	0%	75%	6
% of FDRs dealt with the same day	Probation			16% 14	18% 16	21% 18	20% 15	15% 11	18% 18	17% 14	20% 18
% of Oral reports given	Probation			14% 12	18% 16	7% 6	17% 13	15% 11	17% 17	19% 16	19% 17
% of SDRs	Probation			69% 59	64% 57	72% 63	63% 48	71% 53	65% 66	64% 53	60% 53
Disposals											
Initial guilty pleas disposed of at first listing	CJU	60%	73%	74% 76	70% 80	72% 51	74% 69	71% 60	78% 86	86% 122	68% 76
Timeliness											
Trials commenced within 8 weeks of first hearing	HMCS	80%									
Average number of days from charge to disposal in Magistrates Courts	HMCS	42				73			49		
Average number of hearings for contested cases	HMCS	2									
Cracked and Ineffective trials											
% Effective trials	HMCS		46.3%	48.4%	55.4%	45.1%	49.5%	56.0%	50.5%	46.6%	55.7%
% Cracked trials	HMCS	29.5%	32.9%	29.7%	24.3%	33.3%	31.6%	33.0%	33.6%	28.8%	27.8%
% Ineffective trials	HMCS	19.0%	20.8%	22.0%	20.3%	21.6%	18.9%	11.0%	15.9%	24.7%	16.5%
% Vacated trials	HMCS		39.2%	25.4%	33.9%	32.0%	33.6%	31.1%	26.2%	39.7%	29.5%
% Discontinued trials	CPS		10.8%	15.2%	12.7%	11.7%	16.6%	12.3%	15.8%	17.7%	

The number of Conditional Cautions administered per month to November 2008

	2005-06	2006-07	07-08 Q1	07-08 Q2	07-08 Q3	Jan-08	Feb-08	Mar-08	Apr-08	May-08	Jun-08	Jul-08	Aug-08	Sep-08	Oct-08	Nov-08	Total to date
Avon & Somerset		1	7	16	29	20	11	22	23	27	36	27	29	25	28	15	316
Bedfordshire		5	3	4	17	5	8	2	3	5	4	8	4	8	2	3	81
BTP		22	4	8	22	5	6	4	3	9	7	9	5	5	15	8	132
Cambridgeshire			10	21	20	6	3	4	5	5	11	5	3	7	13	22	135
Cheshire		41	41	27	64	21	15	19	14	17	15	13	9	8	9	5	318
Cleveland			5	8	18	3	4	6	10	11	4	7	5	5	6	6	98
Cumbria			14	19	26	10	20	16	6	13	8	8	11	8	25	20	204
Derbyshire		1	8	5	12	6	6	4	11	9	13	15	14	14	29	6	153
Devon and Cornwall			0	17	45	21	23	19	19	12	17	21	20	11	12	18	255
Dorset		45	54	41	51	31	13	16	15	11	19	14	16	19	18	14	377
Durham		1	15	28	21	7	8	5	13	2	4	10	4	12	8	4	142
Dyfed Powys		25	33	37	16	15	16	8	14	9	10	6	11	6	9	12	227
Essex			6	9	22	8	13	9	13	7	5	5	13	5	7	6	128
Gloucestershire			0	8	8	1	1	4	12	10	13	5	2	4	8	9	85
Greater Manchester		21	12	4	8	2	4	8	14	12	11	21	7	9	10	13	156
Gwent			3	0	0	1	2	1	0	3	0	0	0	1	3	3	17
Hampshire & IOW		2	5	2	21	22	15	24	21	23	18	43	35	45	40	39	355
Hertfordshire			0	4	4	3	3	4	5	4	3	5	3	4	4	5	51
Humberside		9	16	15	7	3	11	14	10	11	17	19	14	21	15	12	194
Kent			5	14	21	15	16	15	24	15	15	16	8	18	12	20	214
Lancashire	323	1037	359	316	329	107	88	109	102	89	99	76	73	107	102	53	3369
Leicestershire			0	3	3	3	2	11	5	8	6	12	10	18	20	8	109
Lincolnshire			0	4	5	2	3	1	1	5	0	0	3	1	0	3	28
London		30	73	81	113	35	50	43	60	59	36	47	52	45	63	50	837
Merseyside	11	71	70	43	58	12	16	24	33	32	64	35	41	53	45	48	656
Norfolk			4	11	60	25	16	36	50	32	23	30	24	19	41	19	390
Northamptonshire					13	3	2	8	3	2	1	2	2	2	8	5	51
Northumbria	22	25	3	3	9	9	13	8	4	10	9	6	5	5	15	4	150
North Wales		21	32	68	63	27	13	27	22	9	25	24	18	22	23	24	418
North Yorkshire			1	60	75	26	31	16	32	20	16	39	29	27	18	23	413
Nottinghamshire			0	3	2	2	3	2	5	1	6	15	15	14	14	13	95
South Wales		3	3	6	6	13	4	6	10	8	9	9	8	13	12	6	116
South Yorkshire	27	62	32	49	57	17	11	22	23	23	13	13	19	15	14	27	424
Staffordshire		8	7	21	16	0	7	6	11	14	13	8	10	9	13	9	152
Suffolk			7	15	21	6	7	8	9	7	6	5	6	7	7	8	119
Surrey			0	8	7	4	3	15	7	5	4	9	4	4	2	6	78
Sussex			2	2	20	8	6	15	18	13	22	14	16	21	18	21	196
Thames Valley	46	50	26	21	23	5	7	9	9	15	10	21	10	20	20	11	303
Warwickshire			1	1	2	0	0	6	4	6	11	7	12	5	9	5	69
West Mercia	43	46	3	9	34	16	12	13	11	20	10	16	13	17	13	10	286
West Midlands	38	33	3	8	9	1	2	1	21	37	28	20	19	26	45	28	319
West Yorkshire			3	6	25	16	3	11	13	11	11	8	6	17	20	23	173
Wiltshire			0	3	3	1	5	8	4	6	6	2	11	5	7	5	66
Total	510	1559	870	1028	1385	543	502	609	692	647	658	675	619	707	802	649	12455
Total to date	510	2069	2939	3967	5352	5895	6397	7006	7698	8345	9003	9678	10297	11004	11806	12455	

Source: NCPS – MIS November 2008

PPO ARRESTS Within MSF	2008 - 09	Apr	May	Jun	Jul	Aug	Sep	Oct	Nov	Dec	Jan	Feb	Mar	Total PPO Arrests YTD	% of Total PPO arrests in MSF	Total of Different PPOs Arrested Year to Date	Total PPOs (Oct 08)	% of Total PPOs within MSF
Note: New structure for "Most Similar Groups"																		
Hertfordshire		41	26	33	32	25	14	19						190	9.0%	86	140	7.5%
Avon & Somerset		31	33	41	33	35	42	53						268	12.7%	114	247	13.2%
Bedfordshire		14	18	12	24	22	20	28						138	6.5%	58	106	5.7%
Essex		19	23	18	23	6	14	12						115	5.4%	69	241	12.9%
Hampshire		25	24	25	13	21	15	18						141	6.7%	88	248	13.3%
Kent		38	31	38	35	28	43	25						238	11.3%	106	259	13.9%
Sussex		81	91	80	72	68	60	67						519	24.5%	198	324	17.4%
Thames Valley		81	73	69	76	76	75	56						506	23.9%	199	300	16.1%
MSF Totals		330	319	316	308	281	283	278	0	0	0	0	0	2115	100.0%	918	1865	100.0%

Source: JTRACK (CJS) as at 10/11/08

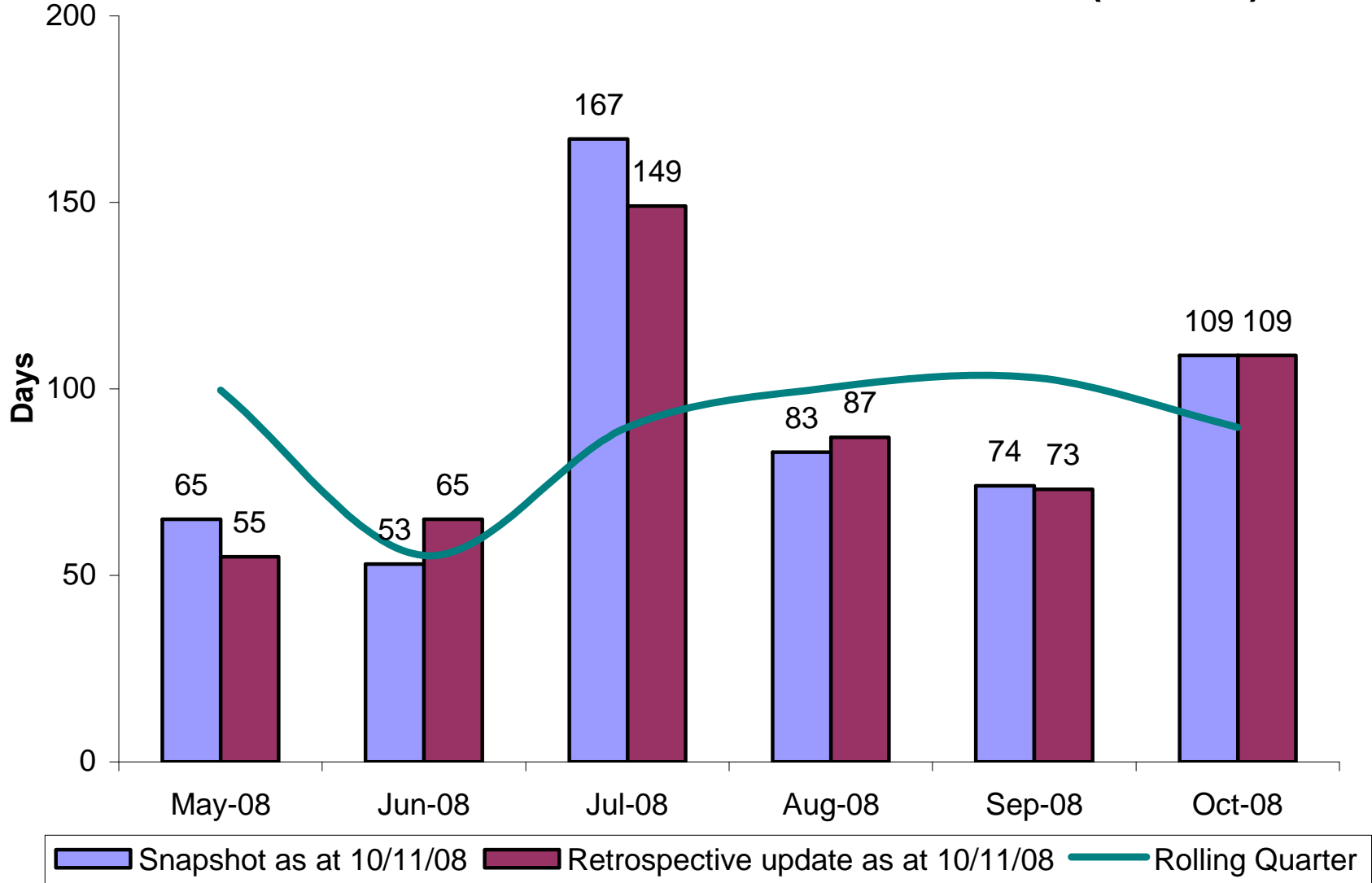
Prolific & Priority Offences – CJA Performance Summary October

Area	No. of Arrested Offences	No. of Offenders Arrested	No. of Charged Offences	No. of Offenders Charged	No. of Discontinued Offences	Cautions	TICs	Convictions	OBTJ	Days from Arrest to Conviction
East	21	13	21	11	5	0	0	19	19	110
Central	0	0	0	0	0	0	0	0	0	n/a
West	8	4	8	4	5	0	0	9	9	109
Total	29	17	29	15	10	0	0	28	28	109

Source: JTRACK (CJS) as at 10/11/08

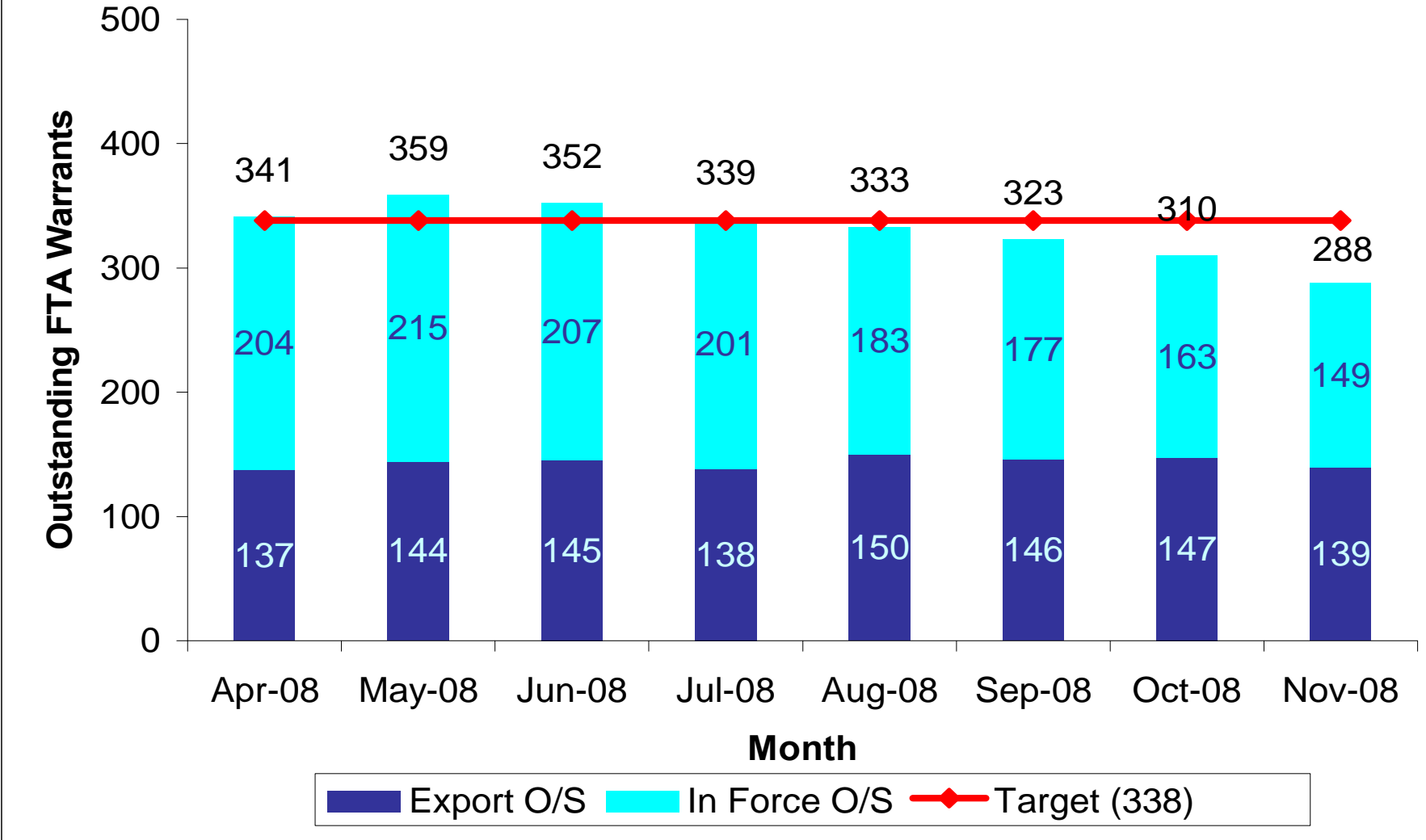
NOTE: Central figures are incomplete

Herts. PPO Offences - Arrest to Conviction (JTrack)

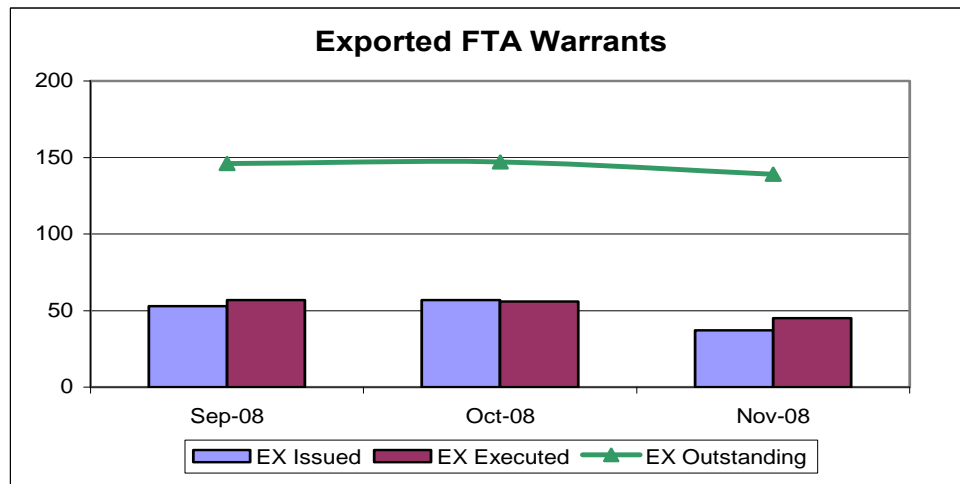
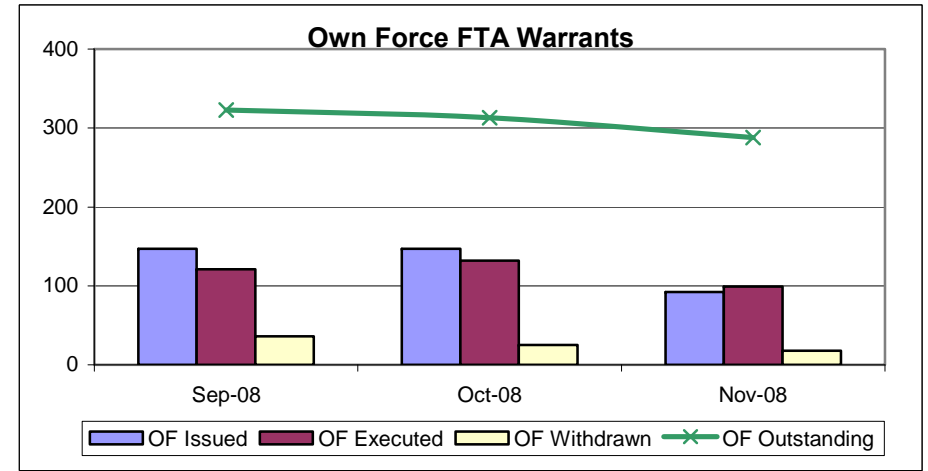
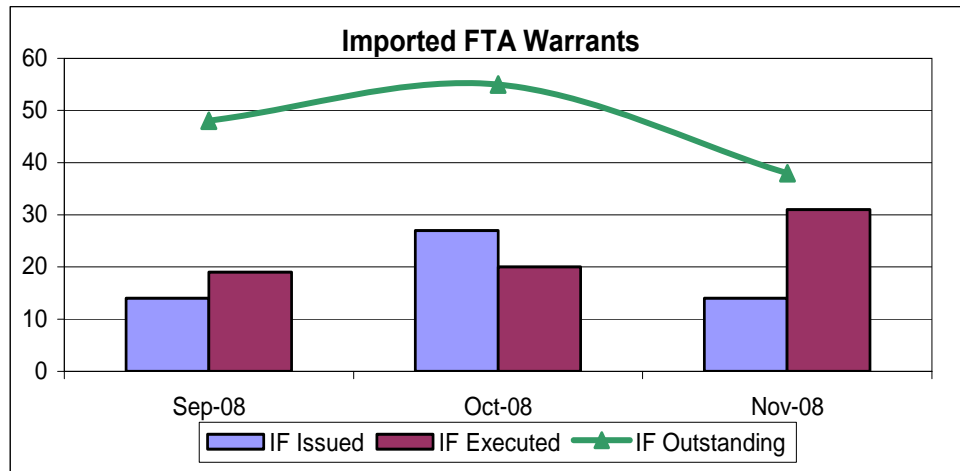


Source: JTRACK (CJS) as at 10/11/08

FTA Warrants



Source: Warrant's Monthly (Ops. Support) – November 2008



FTA WARRANTS	Sep 08	Oct 08	Nov 08
Imported Warrants Received	14	27	14
Imported Warrants Executed	19	20	31
Imported Warrants Outstanding	48	55	38
Warrants Issued in Force	147	147	92
Warrants Executed in Force	121	132	99
Warrants Withdrawn	36	25	18
Warrants Outstanding sent to other Forces	146	147	139

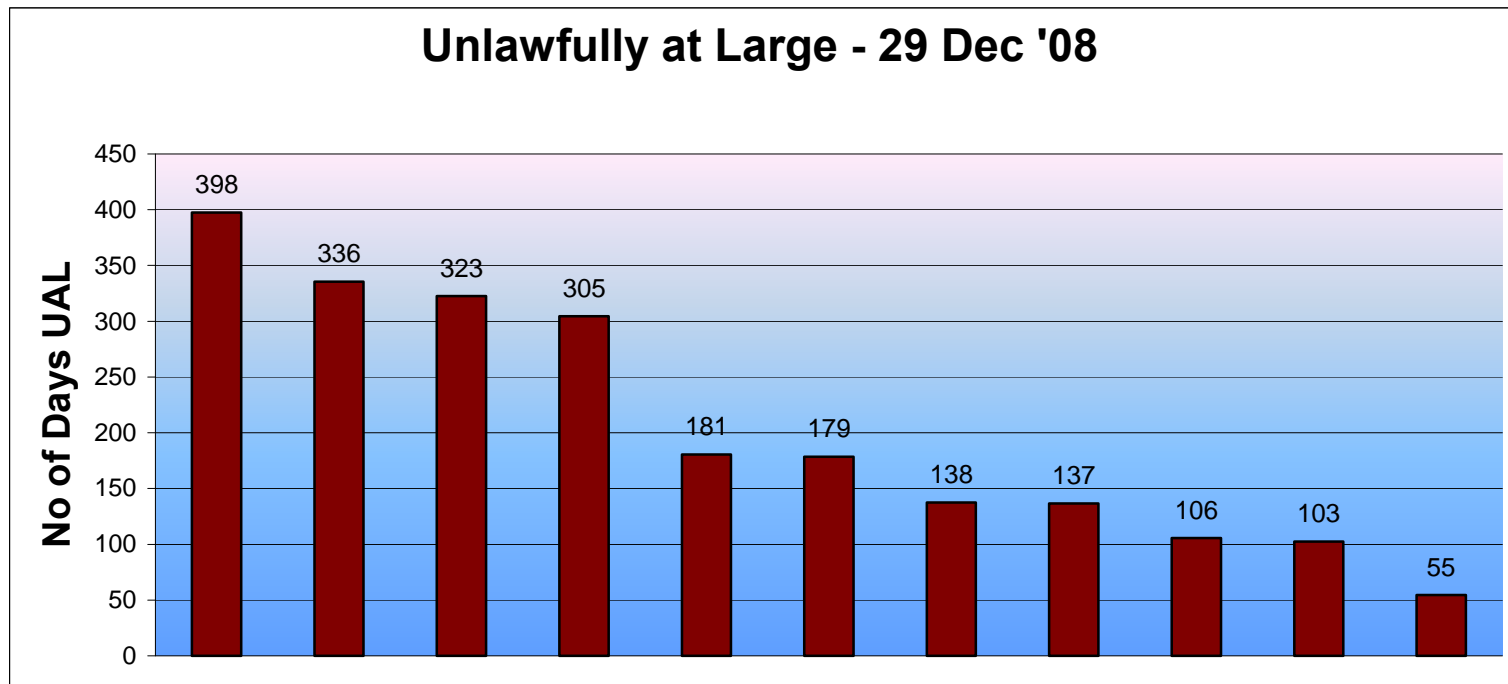
FTA Warrants		Target	Sep 08	Oct 08	Nov 08	% Target Variation
Central Measure	Execute 90% of PPO/PYO warrants in 7 days	90%	100% (7 / 7)	50% (4 / 8)	50% (3 / 6)	- 40%
Central Measure	Execute 70% of Category A warrants in 14 days	75%	82% (14/17)	67% (12/18)	62% (8 / 13)	- 13%
Central Measure	Execute 70% of Category B warrants in 21 days	75%	50% (45/90)	61% (58/86)	52% (27/52)	- 23%
Central Measure	Execute 60% of Category C warrants in 28 days	65%	53% (21/40)	67% (29/43)	37% (10/27)	- 28%

Source: Warrant's Monthly (Ops. Support) – November 2008

**Warrants
By Police
Area**

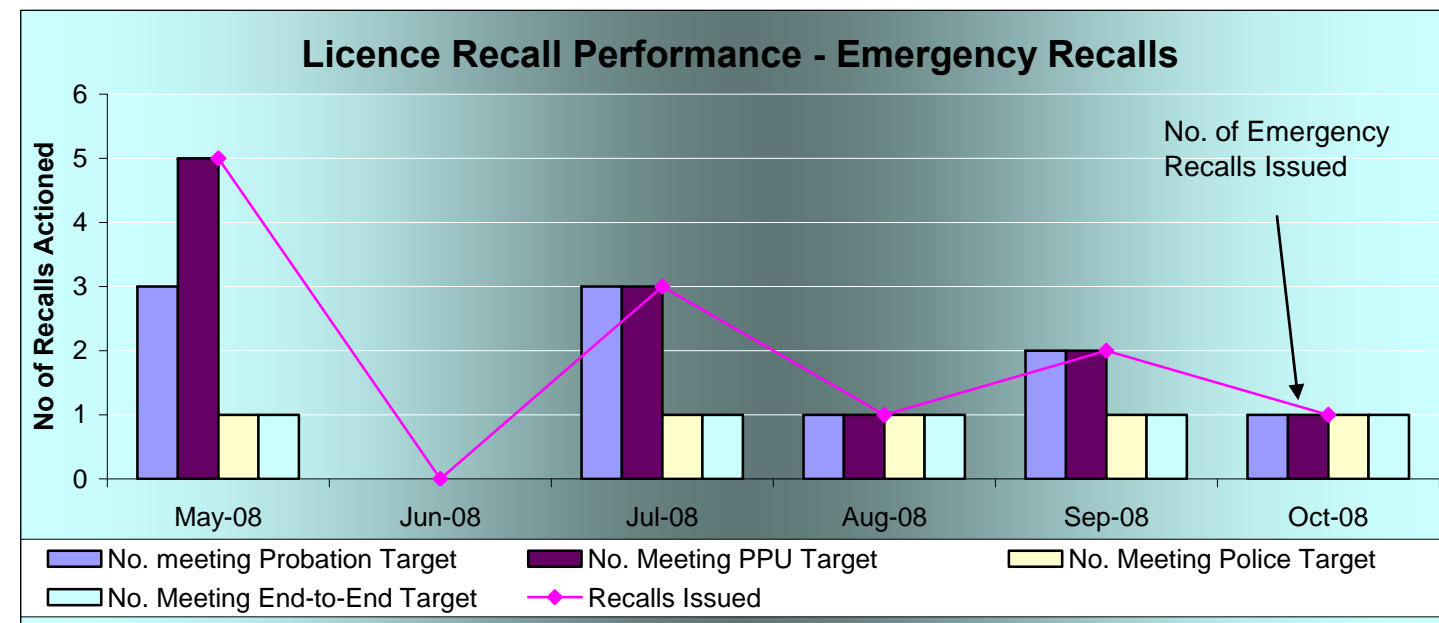
Local Data as at 28 Nov 08	Warrants				PPO/PYO Warrants	
	Outstanding Breach Warrants	Target for FTA Warrants	Outstanding FTA Warrants	% Against Target	PPO / PYO Warrants Currently O/S	% Executed within 7 days since 01/04/2006
Force	61	299	286	+ 4%	2	58%
Eastern	26	110	92	+ 16%	2	57%
Western	22	77	95	- 23%	0	50%
Central	13	112	99	+ 12%	0	67%

Source: Constabulary Daily Returns and Warrant's Monthly (Ops. Support) – November



Source: Police RLO – 29 Dec '08

Licence Recall Data – May '08 to Oct '08



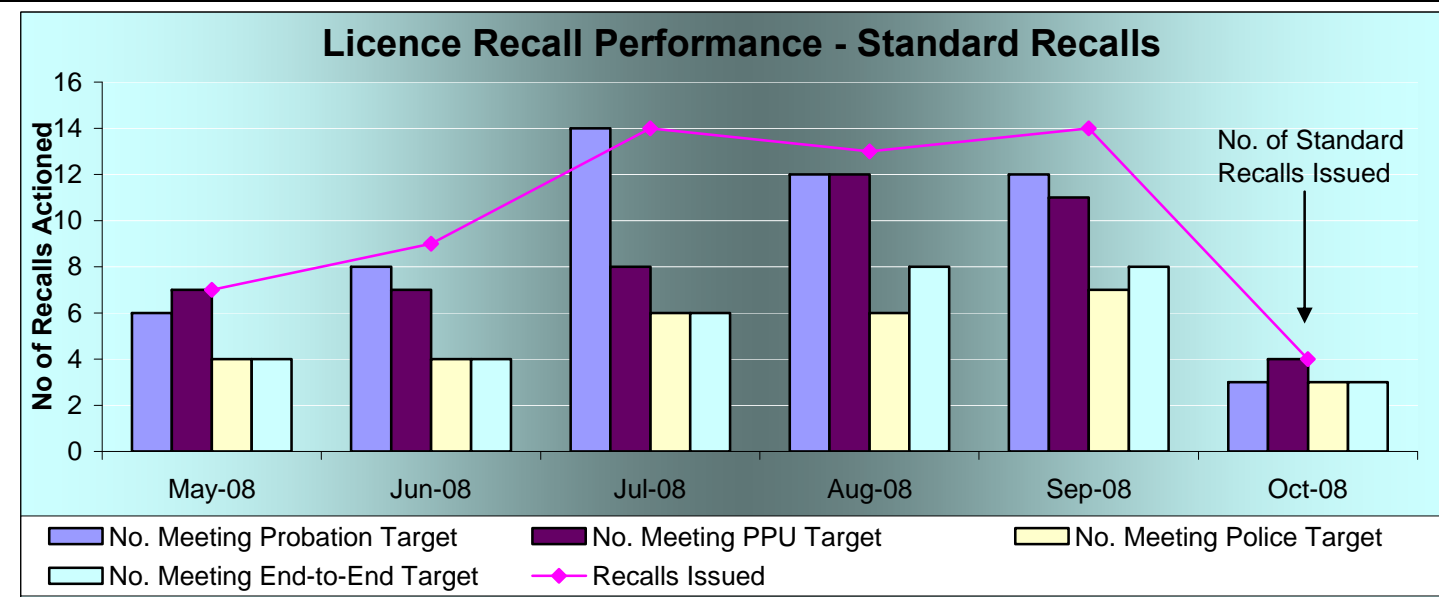
Emergency Recall Targets

Probation: 90% in 24 Hrs.

NOMS PRS: 100% in 2 Hrs.

Police: 80% in 48 Hrs.

End-to-End: 75% in 74 Hrs.



Standard Recall Targets

Probation: 90% in 24 Hrs.

NOMS PRS: 90% in 24 Hrs.

Police: 80% in 96 Hrs.

End-to-End: 80% in 144 Hrs

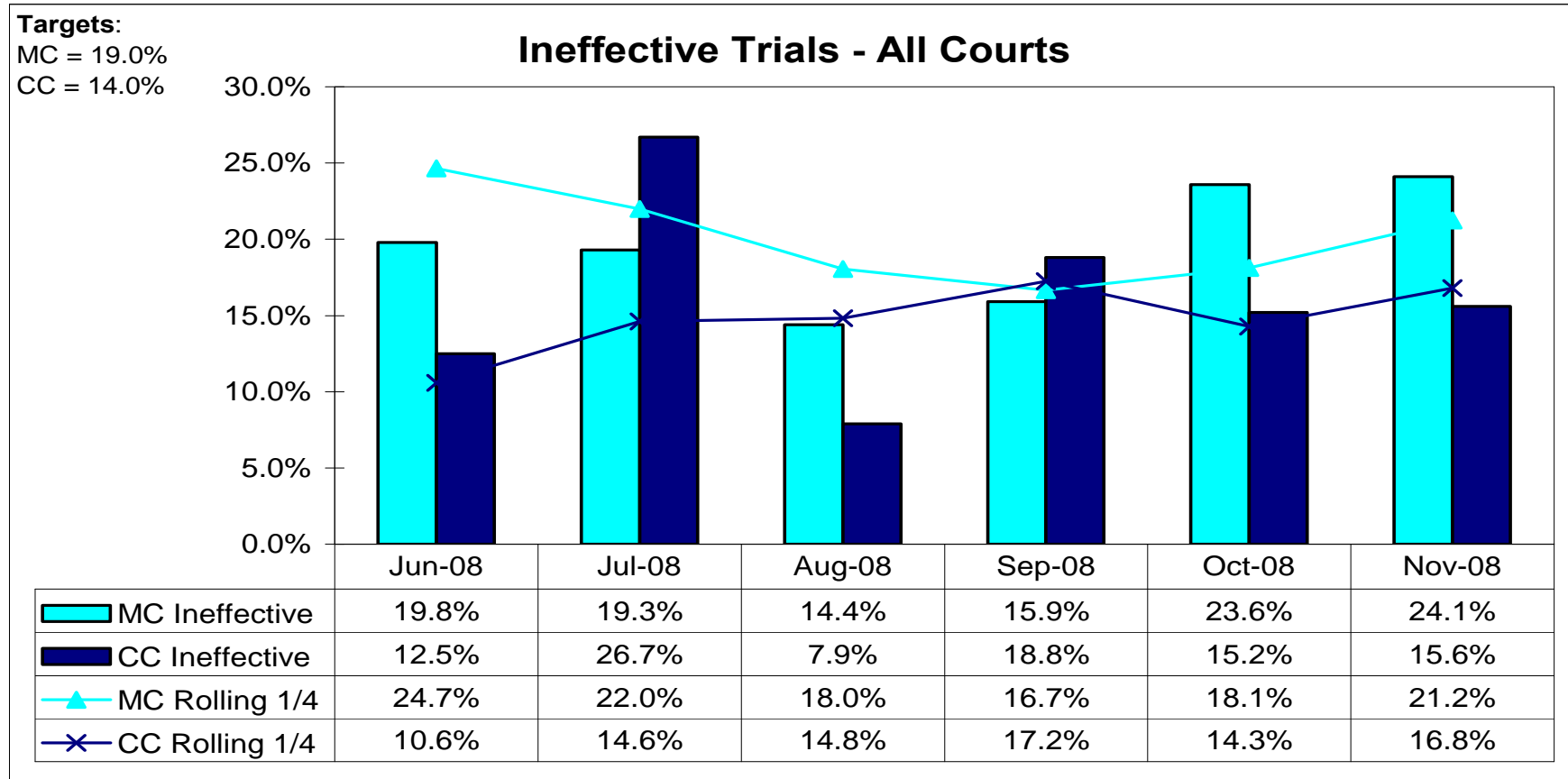
Source: OCJR Returns –May '08 to Oct '08

LICENCE RECALL DATA – August

Herts	Standard						Standard (Total)			Emergency			Total			Probation	PPU	Police
	HDC ONLY			Non-HDC			No of Recalls	End to End Target No	End to end target %	No of Recalls	End to End Target No	End to end target %	No of Recalls	End to End Target No	End to end target %	% in Target	% in Target	% in Target
	No of Recalls	End to End Target No	End to end target %	No of Recalls	End to End Target No	End to end target %												
Month of Aug 2008	No of Recalls	End to End Target No	End to end target %	No of Recalls	End to End Target No	End to end target %	No of Recalls	End to End Target No	End to end target %	No of Recalls	End to End Target No	End to end target %	No of Recalls	End to End Target No	End to end target %	% in Target	% in Target	% in Target
England & Wales	136	87	64%	705	472	67%	841	559	66%	210	126	60%	1051	685	65%	87%	90%	62%
Avon & Somerset	1	1	100%	12	6	50%	13	7	54%	8	6	75%	21	13	62%	81%	90%	57%
Bedfordshire	0	0	0%	8	5	63%	8	5	63%	4	1	25%	12	6	50%	100%	100%	42%
Cambridgeshire	1	1	100%	4	4	100%	5	5	100%	2	1	50%	7	6	86%	71%	100%	86%
Cheshire	2	1	50%	6	4	67%	8	5	63%	0	0	0%	8	5	63%	88%	100%	50%
Cleveland/Teesside	0	0	0%	7	6	86%	7	6	86%	2	2	100%	9	8	89%	100%	78%	89%
Cumbria	3	2	0%	10	7	70%	13	9	69%	1	1	100%	14	10	71%	100%	86%	71%
Derbyshire	2	1	50%	14	11	79%	16	12	75%	4	3	75%	20	15	75%	100%	100%	60%
Devon & Cornwall	0	0	0%	14	10	71%	14	10	71%	3	2	67%	17	12	71%	94%	71%	71%
Dorset	1	1	100%	11	6	55%	12	7	58%	1	0	0%	13	7	54%	100%	77%	54%
Durham & Darlington	4	3	75%	4	3	75%	8	6	75%	2	2	0%	10	8	80%	90%	80%	80%
Dyfed Powys	0	0	0%	7	6	86%	7	6	86%	1	1	100%	8	7	88%	100%	100%	88%
Essex	5	3	60%	11	7	64%	16	10	63%	3	2	67%	19	12	63%	68%	95%	74%
Gloucestershire	1	1	100%	6	4	67%	7	5	71%	4	3	75%	11	8	73%	100%	100%	64%
Greater Manchester	8	5	63%	62	35	56%	70	40	57%	24	15	63%	94	55	59%	97%	86%	55%
Gwent	1	1	100%	9	7	78%	10	8	80%	0	0	0%	10	8	80%	80%	100%	80%
Hampshire & Isle of Wight	3	0	0%	28	19	68%	31	19	61%	9	5	56%	40	24	60%	93%	78%	60%
Hertfordshire	5	3	60%	8	5	63%	13	8	62%	1	1	100%	14	9	64%	93%	93%	50%
Humberside	1	1	100%	21	14	67%	22	15	68%	8	5	63%	30	20	67%	87%	70%	73%
Kent	4	4	100%	16	9	56%	20	13	65%	7	5	71%	27	18	67%	96%	85%	59%
Lancashire	6	5	83%	25	22	88%	31	27	87%	3	2	67%	34	29	85%	94%	91%	76%
Leicestershire	3	0	0%	14	8	57%	17	8	47%	3	0	0%	20	8	40%	85%	95%	35%
Lincolnshire	3	3	100%	6	4	67%	9	7	78%	2	1	50%	11	8	73%	100%	100%	64%
London	17	13	76%	122	79	65%	139	92	66%	21	7	33%	160	99	62%	76%	84%	61%
Merseyside	5	2	40%	28	18	64%	33	20	61%	4	2	50%	37	22	59%	76%	97%	54%
Norfolk	0	0	0%	9	7	78%	9	7	78%	4	3	75%	13	10	77%	62%	100%	85%
North Wales	3	2	0%	8	6	75%	11	8	73%	3	2	67%	14	10	71%	93%	93%	64%
North Yorkshire	0	0	0%	5	3	60%	5	3	60%	2	2	100%	7	5	71%	100%	86%	71%
Northamptonshire	3	2	67%	11	10	91%	14	12	86%	2	2	100%	16	14	88%	63%	94%	88%
Northumbria	3	1	33%	18	13	72%	21	14	67%	9	7	78%	30	21	70%	93%	97%	67%
Nottinghamshire	3	1	33%	13	8	62%	16	9	56%	4	3	75%	20	12	60%	100%	95%	55%
South Wales	4	2	50%	25	18	72%	29	20	69%	3	1	33%	32	21	66%	91%	97%	59%
South Yorkshire	2	1	50%	23	11	48%	25	12	48%	8	5	63%	33	17	52%	88%	94%	52%
Staffordshire	7	6	0%	11	7	64%	18	13	72%	4	2	50%	22	15	68%	91%	100%	55%
Suffolk	1	1	100%	3	2	67%	4	3	75%	1	0	0%	5	3	60%	100%	100%	60%
Surrey	0	0	0%	5	5	100%	5	5	100%	4	3	75%	9	8	89%	100%	100%	78%
Sussex	1	1	100%	14	10	71%	15	11	73%	4	2	50%	19	13	68%	100%	100%	68%
Thames Valley	6	4	67%	14	9	64%	20	13	65%	7	4	57%	27	17	63%	85%	100%	63%
Warwickshire	0	0	0%	6	6	100%	6	6	100%	3	1	33%	9	7	78%	89%	100%	56%
West Mercia	0	0	0%	4	4	100%	4	4	100%	1	1	100%	5	5	100%	80%	100%	100%
West Midlands	16	9	56%	41	28	68%	57	37	65%	23	14	61%	80	51	64%	84%	94%	60%
West Yorkshire	10	6	60%	32	18	56%	42	24	57%	8	4	50%	50	28	56%	78%	98%	56%
Wiltshire	1	0	0%	10	8	80%	11	8	73%	3	3	100%	14	11	79%	93%	79%	79%

Source: CJ-MIS Enforcement Dashboard – August 2008

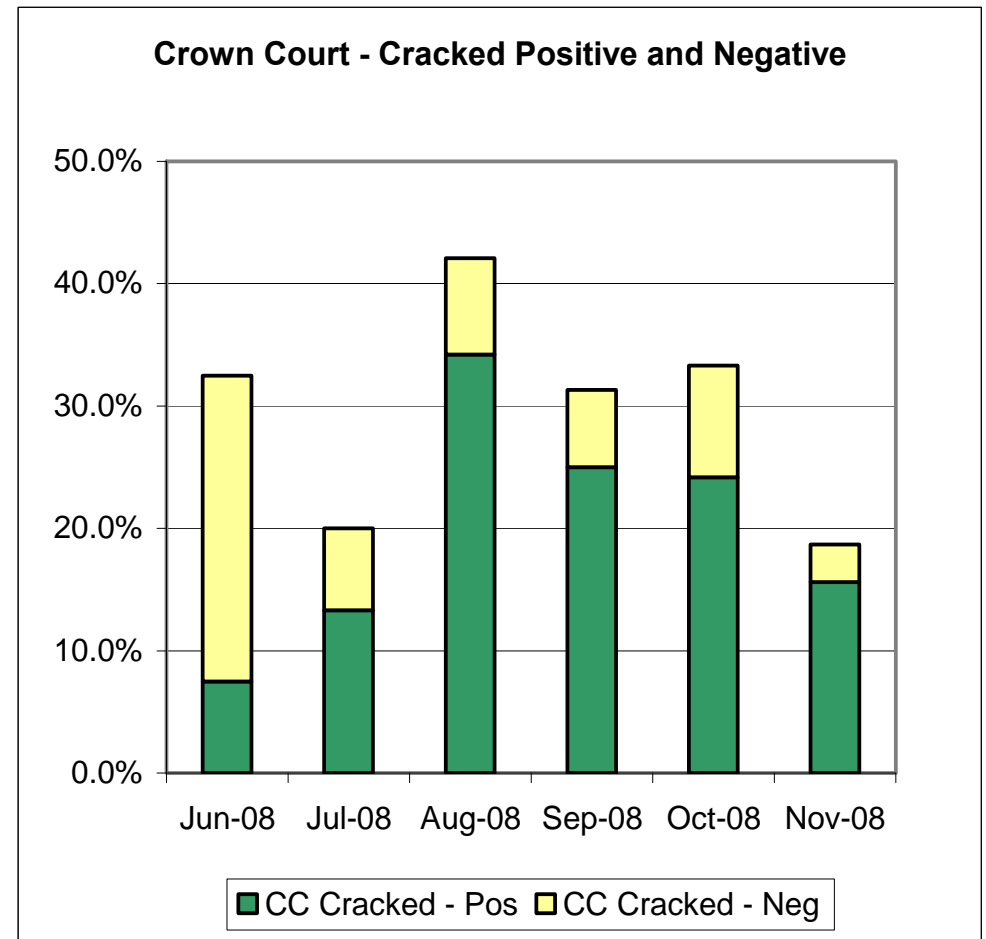
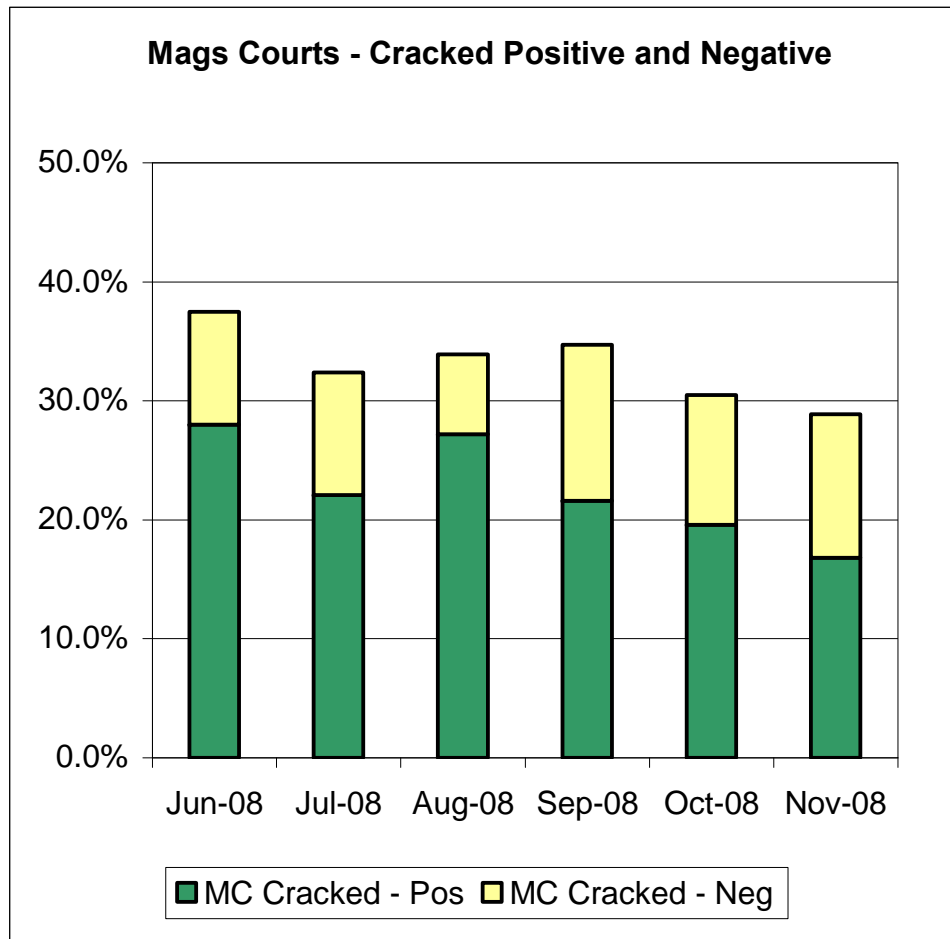
TRIAL EFFECTIVENESS – INEFFECTIVE TRIALS



MC Total Listings	368	348	298	320	326	315
MC Total Ineffective	73	67	43	51	77	76
CC Total Listings	40	30	38	48	33	32
CC Total Ineffective	5	8	3	9	5	5

Source: Court Returns – November 2008

TRIAL EFFECTIVENESS – CRACKED TRIALS



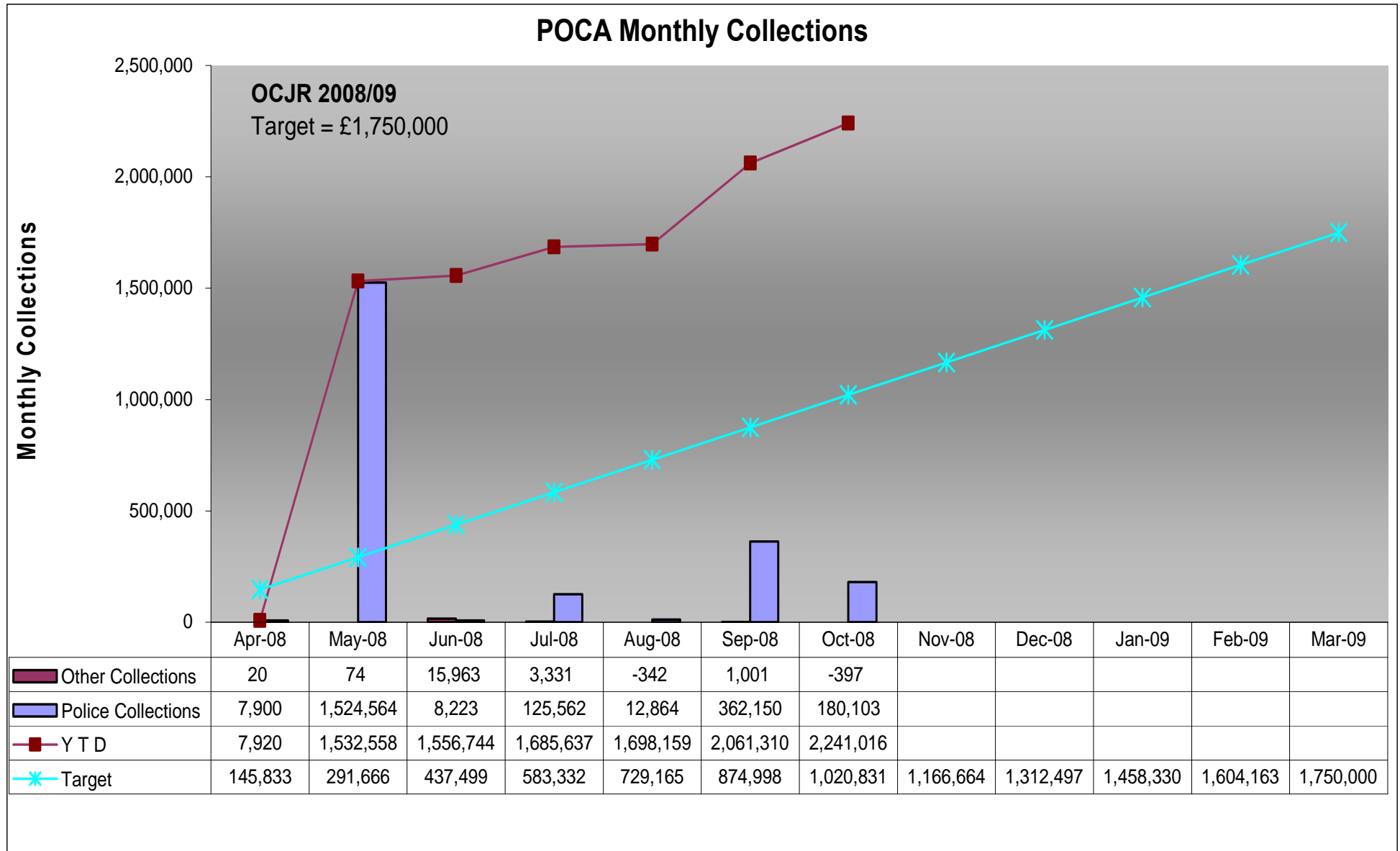
Source: Court Returns – November 2008

NOTE:

A “Positive” cracked trial is mainly due to the defendant offering an acceptable but late Guilty Plea

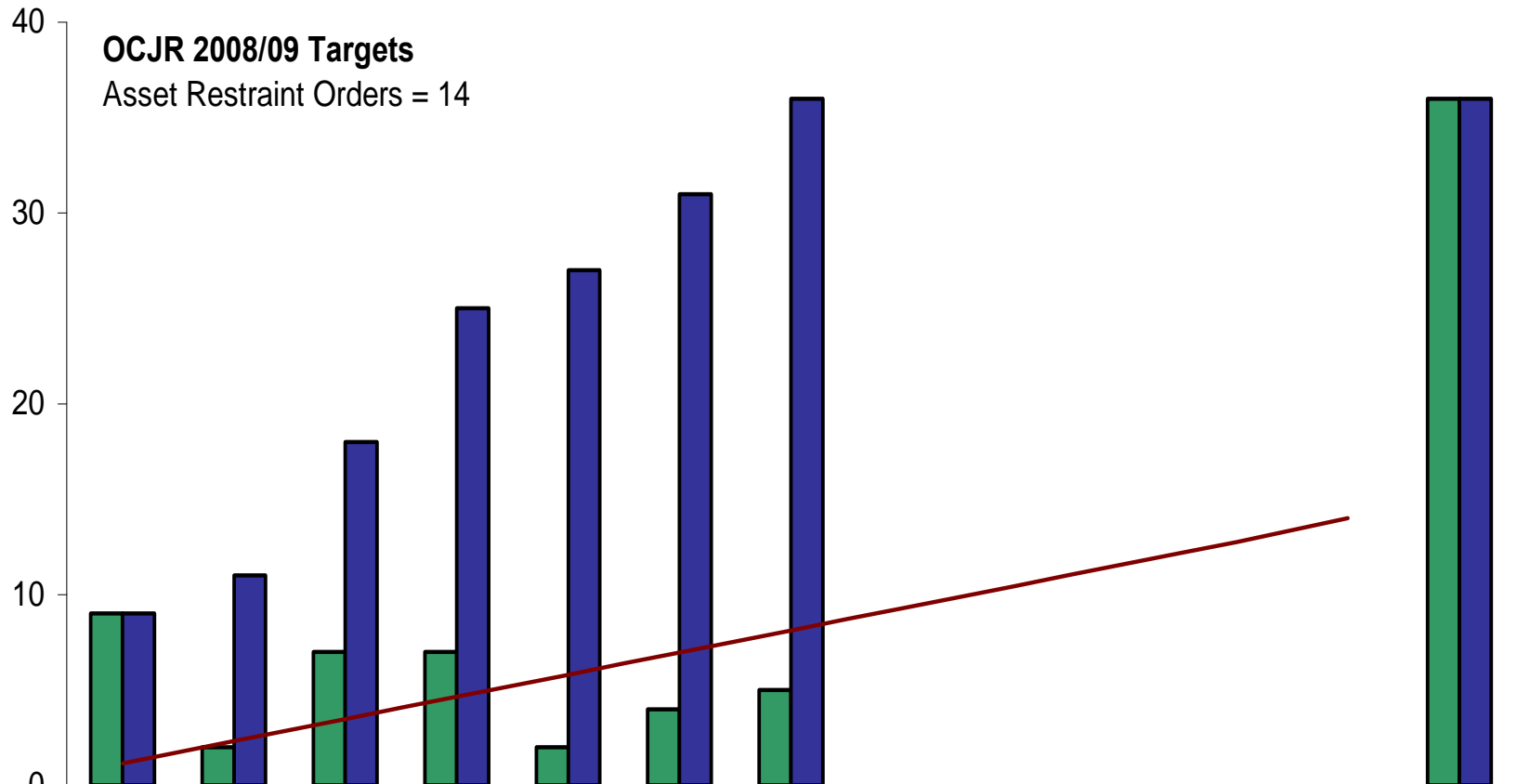
A “Negative” cracked trial is mainly due to the prosecution being unable to proceed, generally due to witness absence

POCA Summary Charts



Enforcement Performance Report (MoJ) –October 2008

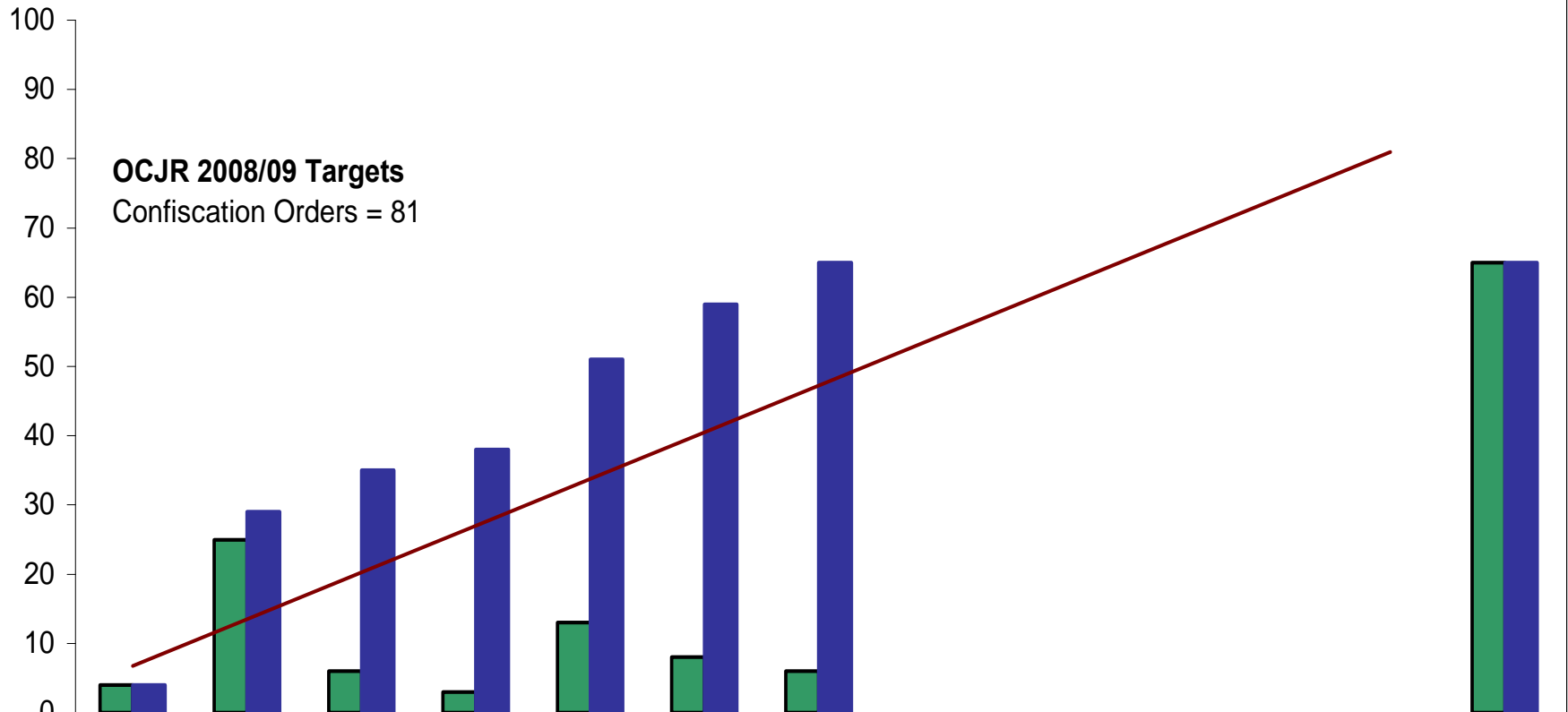
OCJR - Number of Asset Restraint Orders



	Apr-08	May-08	Jun-08	Jul-08	Aug-08	Sep-08	Oct-08	Nov-08	Dec-08	Jan-09	Feb-09	Mar-09	Totals
Restraint Orders	9	2	7	7	2	4	5						36
YTD	9	11	18	25	27	31	36						36
OCJR Target	1.2	2.3	3.5	4.6	5.8	7.0	8.1	9.3	10.4	11.6	12.8	14.0	

Source: FIU Spreadsheet – October 2008

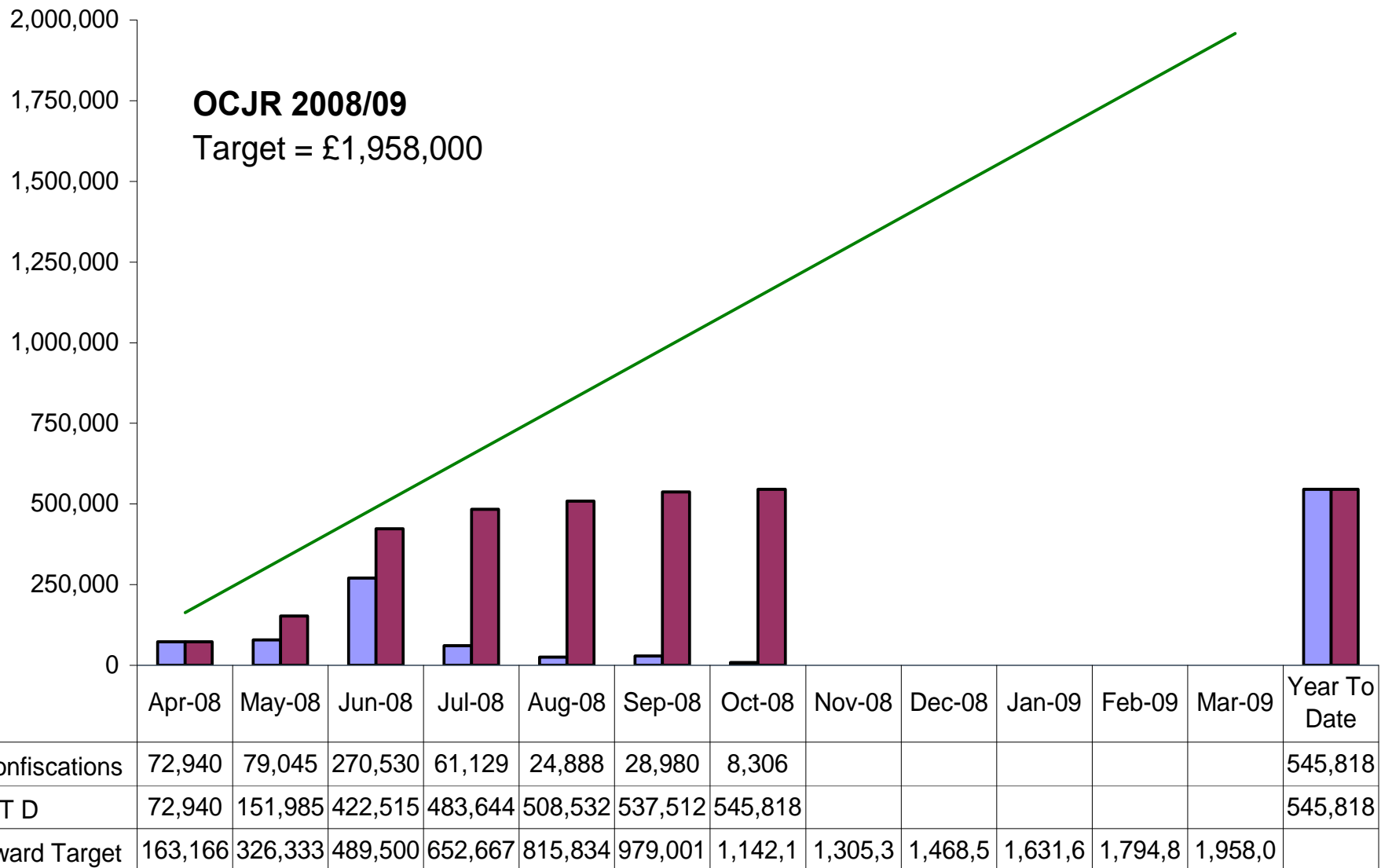
OCJR - Number of Confiscation Orders



	Apr-08	May-08	Jun-08	Jul-08	Aug-08	Sep-08	Oct-08	Nov-08	Dec-08	Jan-09	Feb-09	Mar-09	Totals
■ Confiscations	4	25	6	3	13	8	6						65
■ YTD	4	29	35	38	51	59	65						65
— Target	6.75	13.50	20.25	27.00	33.75	40.50	47.25	54.00	60.75	67.50	74.25	81.00	

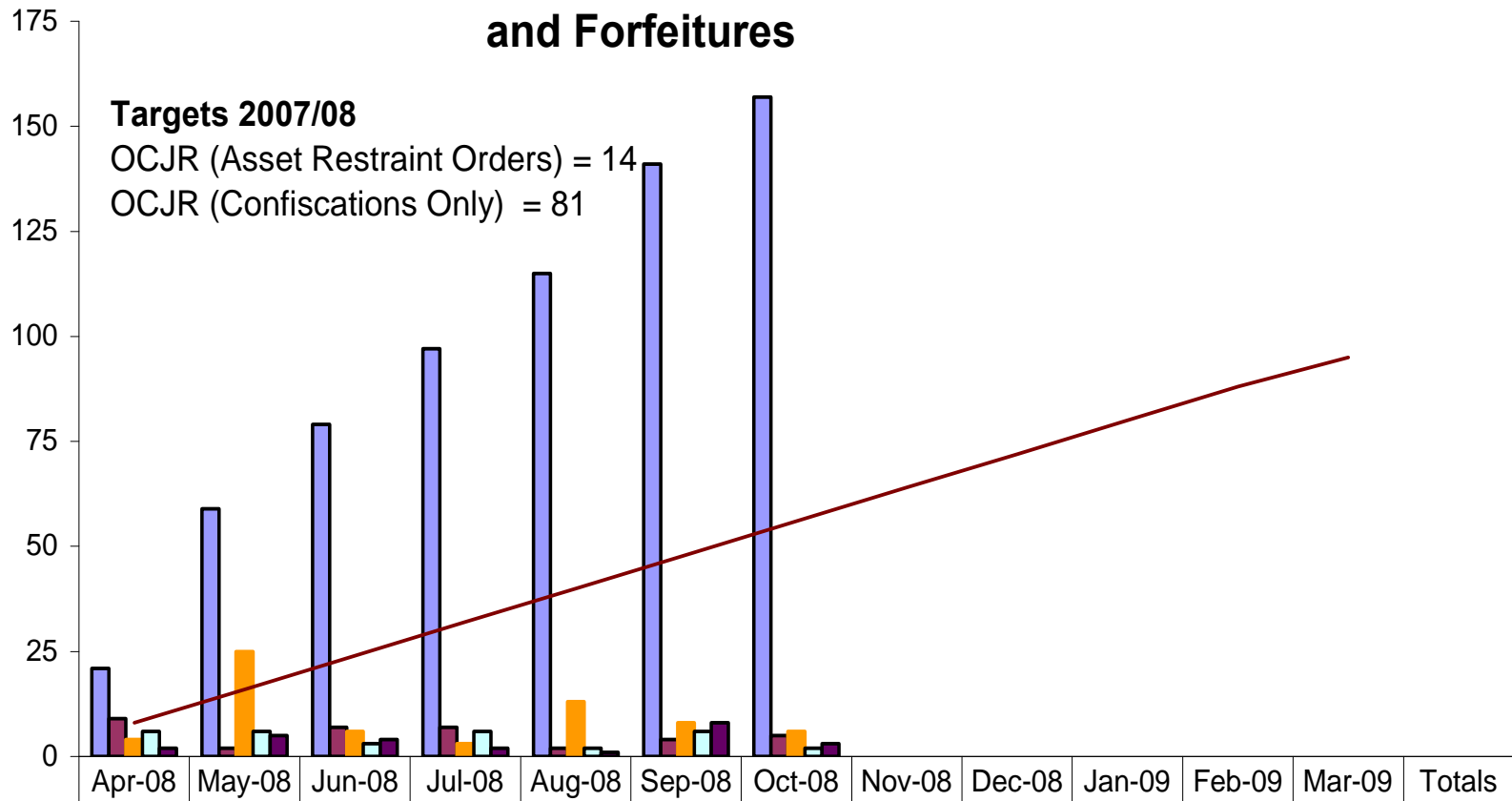
Source: FIU Spreadsheet – October 2008

OCJR - Value of Confiscation Orders



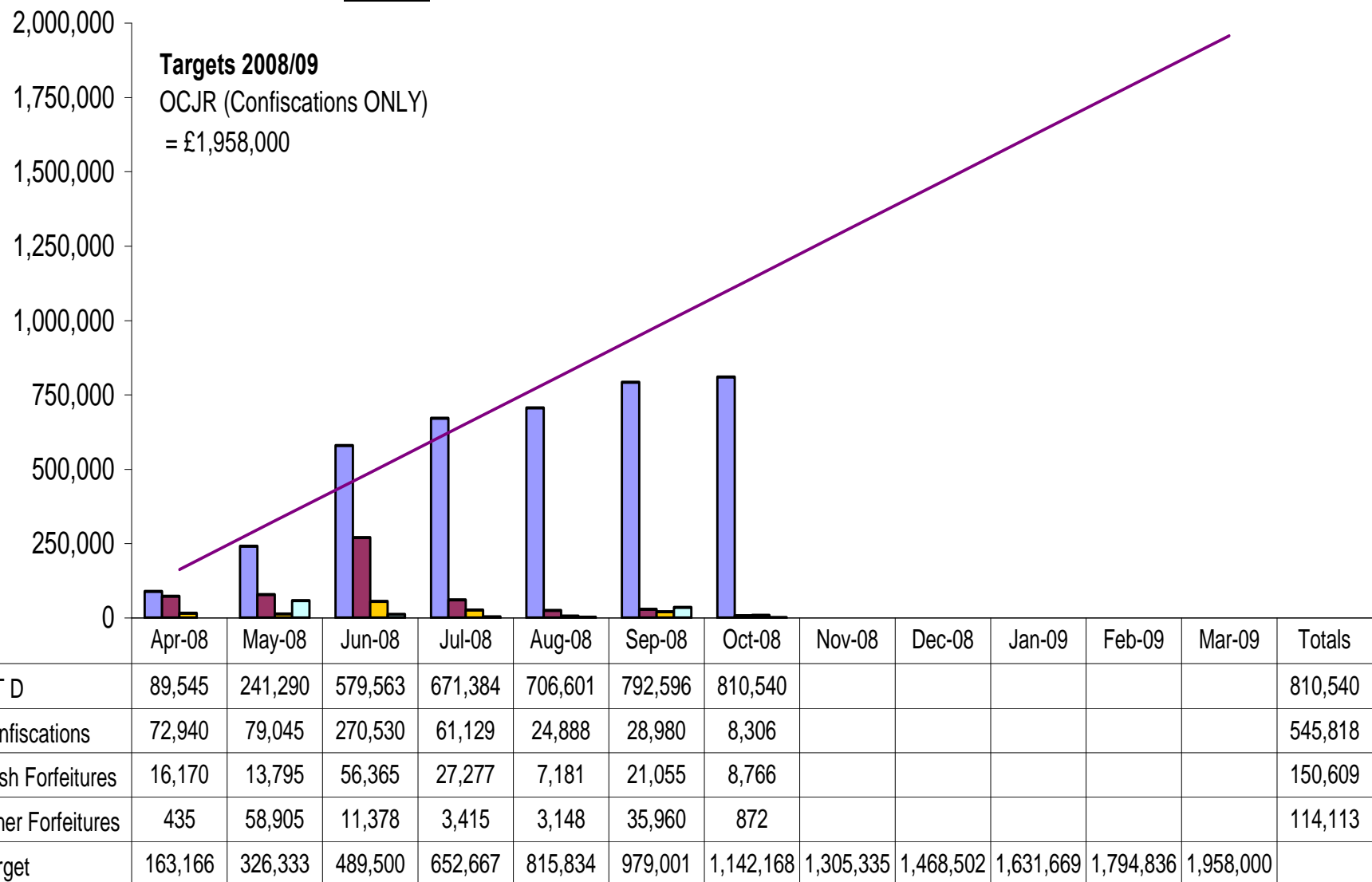
Source: FIU Spreadsheet – October 2008

Number of Restraint Orders, Confiscation, and Forfeitures



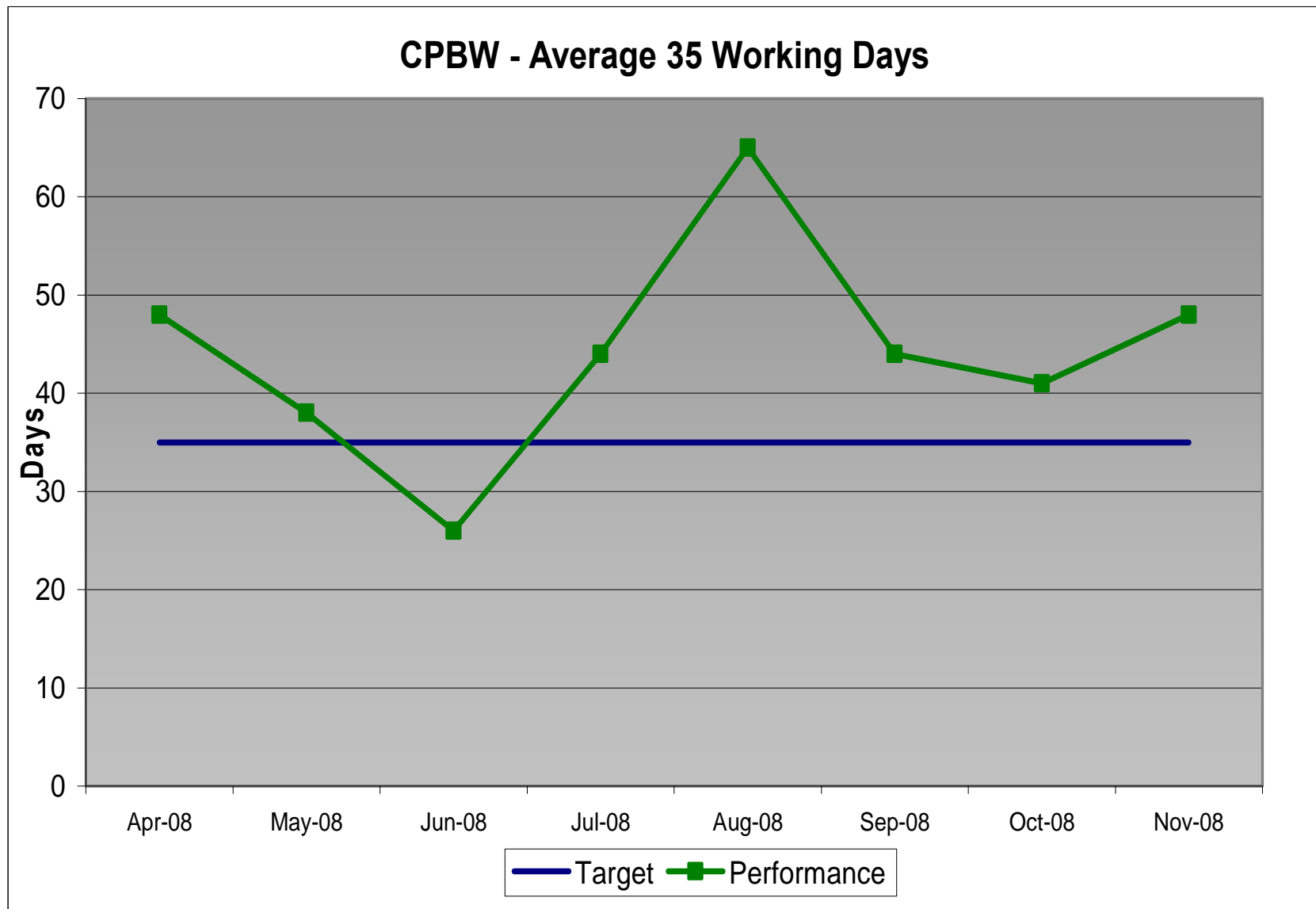
Source: FIU Spreadsheet – October 2008

Value of Confiscation Orders and Forfeitures



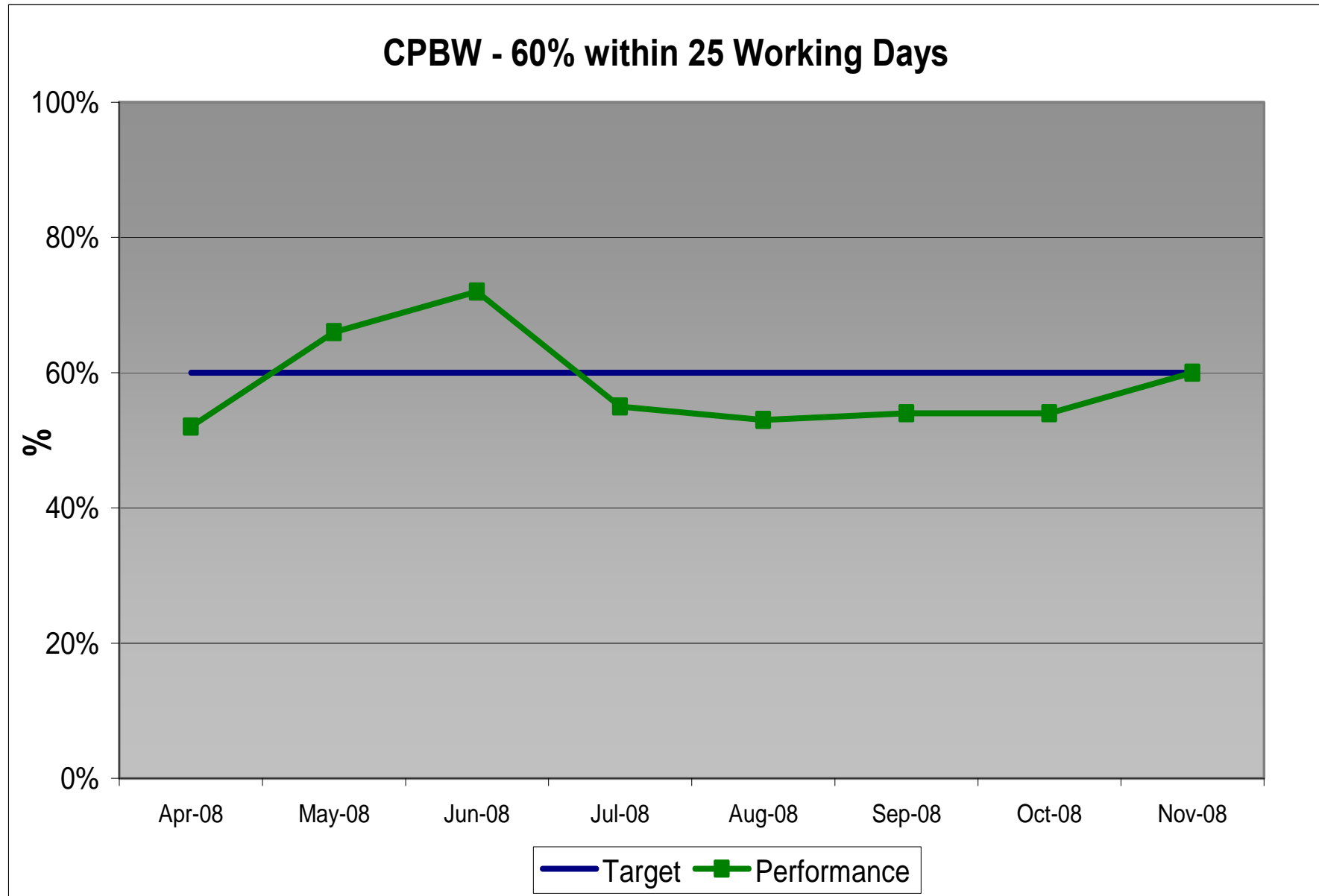
Source: FIU Spreadsheet – October 2008

Community Penalty Enforcements



Source: HMCS – Comet MI – November 2008

Community Penalty Enforcements



Source: HMCS – Comet MI – November 2008

Public Confidence – BCS data to Year Ending Mar '08

% Of Very or Fairly Confident	Objective	Baseline Y/E Mar 03	Y/E Mar 07	Y/E Jun 07	Y/E Sep 07	Y/E Dec 07	Y/E Mar 08	Region Average	National Average
Victims & Witness Satisfaction	Meet the needs of Victims	32.5	37.3	37.3	37.8	38.4	37.6	37.6	36.0
	Meet the needs of Witnesses Baseline Y/E March 04 (Target 70%)	64.3	72.7	73.1	71.9	73.3	72.1	71.7	68.5
Community Engagement	Respect the rights of those accused of crime	77.0	81.7	80.4	80.3	81.0	78.6	81.6	79.7
	Effective in dealing with young people accused of crime	23.3	25.7	24.1	24.1	25.1	24.8	24.8	24.7
Increasing Public Confidence in Bringing Offenders to Justice	Effective in reducing crime	35.2	36.9	37.2	37.3	37.3	38.2	39.6	38.1
	Effective in bringing offenders to justice (Target 48%)	45.7	44.6	45.0	44.6	47.3	47.3	46.9	44.3
	Deal with cases promptly and efficiently	38.8	40.5	42.0	41.1	41.7	42.1	44.5	42.3

Source: CJS/Gov Quarterly Confidence Report

Red	Significantly off target (5%>pts)
Amber	Just off target (5% =<pts)
Green	On or exceeding target

- All 7 of our measures are above our March '03 Baseline.
- On the key measure of 'Effective in Bringing Offenders to Justice' the Mar '08 figure shows that this has remained steady at 47.3 and places Herts 6th. In the national table.
- 4 of the 7 measures show a decrease on the previous quarters' figures, and 1 is equal.
- 5 of our 7 measures are above the National Average, and 2 below.
- 2 of our 7 measures are above the Region average, with 2 equal and 3 below.

Effectiveness measures
(percentage very / fairly confident)

	Oct 07 - Mar 08 (PSA24 baseline)	+/- 95% confidence intervals	Direction want measure to go
Police are effective at catching criminals	53.1	1.2	↑
CPS is effective at prosecuting people accused of committing a crime	46.0	1.2	↑
Courts are effective at dealing with cases promptly	39.3	1.2	↑
Courts are effective at giving punishments which fit the crime	22.4	1.0	↑
Prisons are effective at punishing offenders who have been convicted of a crime	30.1	1.1	↑
Prisons are effective at rehabilitating offenders who have been convicted of a crime	19.1	1.0	↑
Probation service is effective at preventing criminals from re-offending	20.4	1.0	↑
Criminal Justice System as a whole is effective	36.9	1.1	↑

Fairness measures
(percentage strongly / tend to agree)²

	Oct 07 - Mar 08 (PSA24 baseline)	+/- 95% confidence intervals	Direction want measure to go
CJS gives witnesses and victims the support they need	48.9	1.3	↑
CJS treats those who have been accused of a crime as 'innocent until proven guilty'	77.8	1.0	↑
CJS takes into account the views of victims and witnesses	68.3	1.2	↑
CJS takes into account the circumstances surrounding the crime when handing out sentences	63.0	1.2	↑
CJS is too soft on those accused of committing a crime	79.4	1.0	↓
CJS achieves the correct balance between the rights of the offender and rights of the victim	33.1	1.2	↑
CJS discriminates against particular groups or individuals	35.8	1.2	↓
Criminal Justice System as a whole is fair	55.9	1.2	↑